

PROJECT AREA 2 – Two Week Look Ahead

12/27/21 - 1/07/22 **Friday, December 31, 2021: No construction activities in observance of the New Year holiday.**

PROJECT#: SANDRESM2 | BOROUGH: MANHATTAN | DATE ISSUED: 12/23/21

The following is an anticipated work schedule for the upcoming week. **However, due to unforeseen field and weather conditions**, it may become necessary to change some scheduled work locations, operations, and dates.

Map Key	Date	Work Hours	Location	Operation
1	12/27/21–1/07/22	7:00 am to 3:30 pm	Stuyvesant Cove Park: E 20 Street to E 23 Street	Greenway closure continues Pile installation for the floodwall ongoing Floodwall construction ongoing
2	12/27/21–1/07/22	7:00 am to 3:30 pm	E 23 Street at East Service Road and under the FDR Dr. Adjacent to BP Gas Station	* Modified Traffic Pattern at E. 23rd Street under the FDR Dr. ECS & ConEdison utility work ongoing
3	12/27/21–1/07/22	7:00 am to 3:30 pm	West Service Rd between E 25 Street and E 23 Street	Pile installation for the floodwall ongoing
4	12/27/21–1/07/22	7:00 am to 3:30 pm	Asser Levy Playground	Park reconstruction in-progress Excavation for the Flood wall foundation
5	12/27/21–1/07/22	7:00 am to 3:30 pm	E 15th Street between Ave C and FDR Dr. within Con Edison Facility	Sewer reconstruction/coordination for sub-surface investigation
6	12/27/21–1/07/22	7:00 am to 3:30 pm	Exit 7 Ramp FDR Dr. left lane at Avenue C	**Modified Traffic Pattern at FDR Ramp continues Sewer and catch basin installation

REMINDERS: *Modified Traffic Pattern detour at E 23rd Street under the FDR Dr. continues

Utility work by ConEdison, ECS, etc. may extend work hours and/or occur on weekends to facilitate utility relocations, maintenance work or inspection services

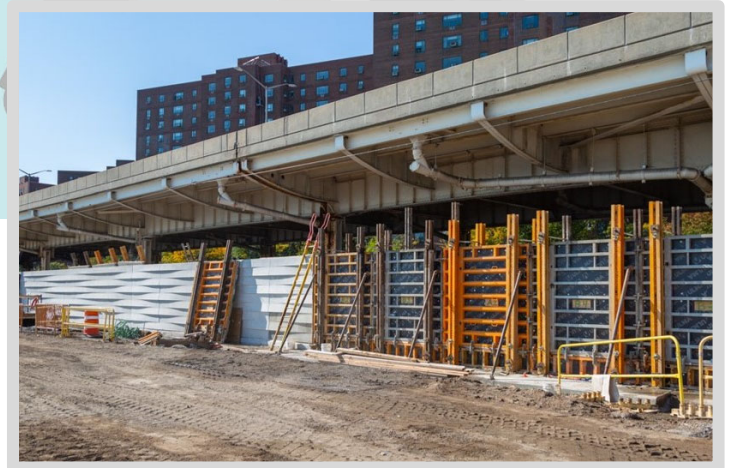
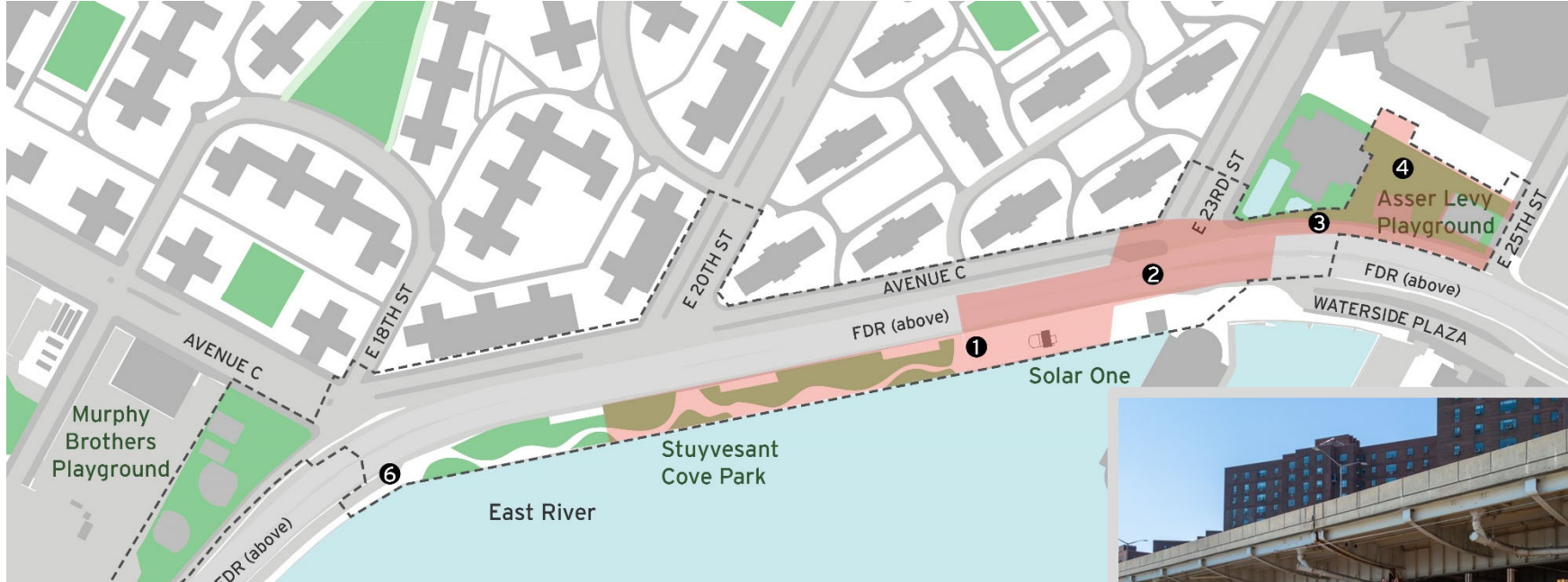
For More Information: Contact **Nadine Harris** at (347) 572-3057, ESCRCCL2@ddccr.com, or via web inquiry: www.nyc.gov/escr/contact

During non-construction hours, please contact the New York City Government Services and Information Hotline at 311.



Construction Bulletin

Numbers on the map below show the approximate location of the construction operations described on the first page. For more detailed information, see Advisories released for each detour/traffic pattern change posted on the website: www.nyc.gov/escr/notices



Operation 1:
Ongoing floodwall construction in Stuyvesant Cove Park.

For More Information: Contact **Nadine Harris** at (347) 572-3057, ESCRCL2@ddccr.com, or via web inquiry: www.nyc.gov/escr/contact
During non-construction hours, please contact the New York City Government Services and Information Hotline at **311**.

