

Excavate a Cookie Like an Archaeologist!

Believe it or not, when archaeologists excavate an archaeological site, they destroy it in the process. Because of this, good excavation records and site documentation are essential to archaeology. Careful excavation techniques are just as important. Try your hand at site excavation and documentation with this cookie excavation. Can you excavate carefully and avoid breaking any fragile artifacts? Be warned, this is a crummy activity!

What You Will Need

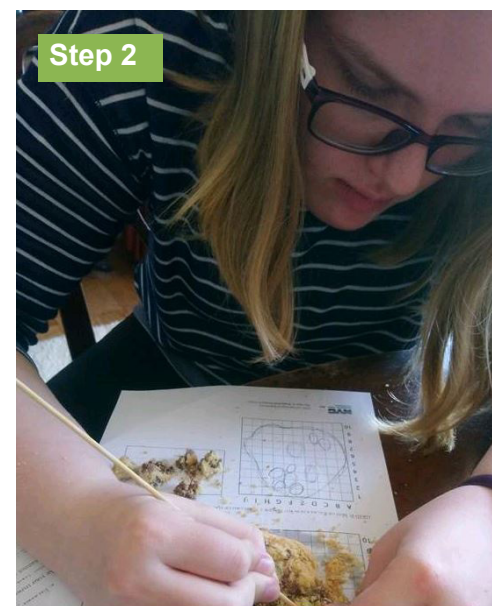
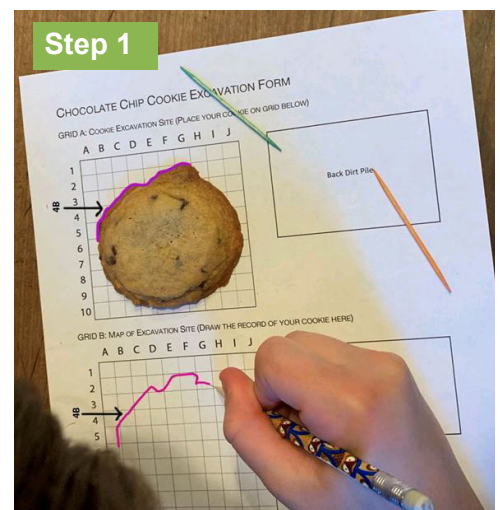
- Toothpicks
- Chocolate chip cookies. This can be your favorite brand of cookies, or it could be an excuse to make cookies! You are creating the excavation environment, so a chewy or crispy cookie will create different excavation conditions.
- Pencil and eraser
- Printed excavation grid (see Page 2). You can create an excavation grid if you do not have a printer. Using a ruler, draw two grids that measure ten squares tall by ten squares wide (10 cm by 10 cm).

Step 1: Draw Your Cookie, Your “Excavation Site”

Take a cookie and place it on Grid A, your excavation site. Then draw the cookie on Grid B beginning with the outside to define the site boundaries. Use the excavation coordinates in Grid A (square 3C, for example) to locate your drawing in Grid B. Next, draw all the artifacts (chocolate chips) you see. You have created a plan drawing of your excavation site.

Step 2: Excavate Your Cookie

Take your trowel, also known as a toothpick, and excavate the cookie by carefully chipping away the dirt. Work from the edge across cookie. Look carefully for artifacts hidden in the “dirt”. Remember, do not pick-up your cookie—you cannot pick-up an archaeological site!



Excavate a Cookie Like an Archaeologist!

Step 3: Add Artifacts to Your Excavation Map

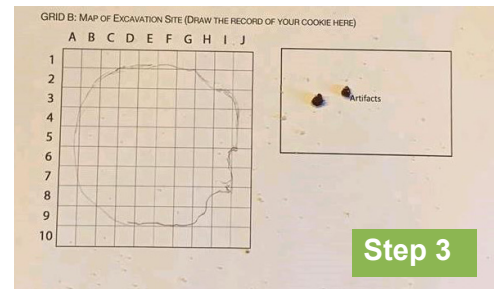
Draw each new artifact you uncover on Grid B map before removing them. Place all artifacts in the laboratory to be counted after excavation. How many artifacts did you discover?

Step 4: Dispose of Your Backdirt Pile

Place your backdirt pile on ice cream, or eat with a glass of milk, along with the excavated artifacts.

Recommended for ages 8+

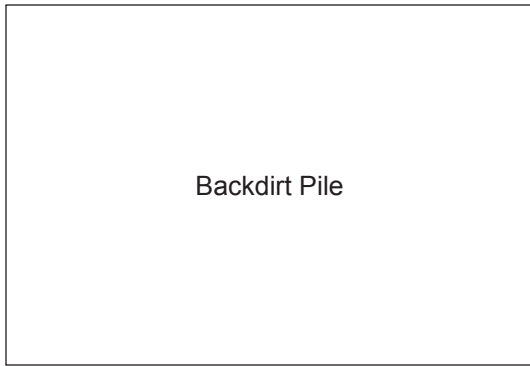
Our thanks to the Museum of Ontario Archaeology and Florida Museum of Natural History



Excavation Grid

Grid A: Cookie Excavation Site

Place your cookie on the grid below.



	A	B	C	D	E	F	G	H	I	J
1										
2										
3										
4										
5										
6										
7										
8										
9										
10										

Grid B: Map of Excavation Site

Draw the record of your cookie here.



	A	B	C	D	E	F	G	H	I	J
1										
2										
3										
4										
5										
6										
7										
8										
9										
10										