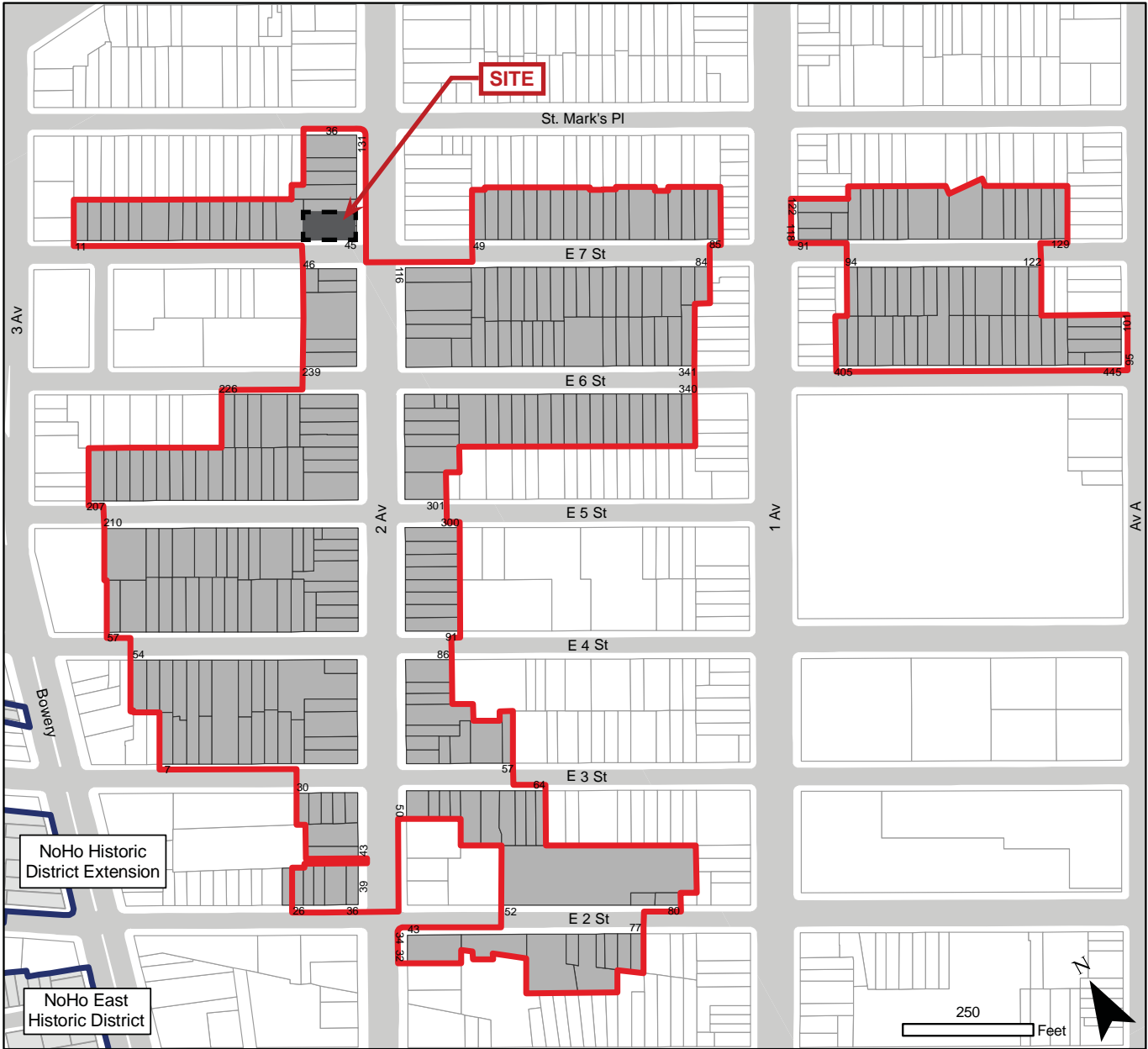




Landmark Preservation Committee Design Presentation

10 July 2018

119-121 2nd Avenue
New York, NY
Nexus Building Development Group



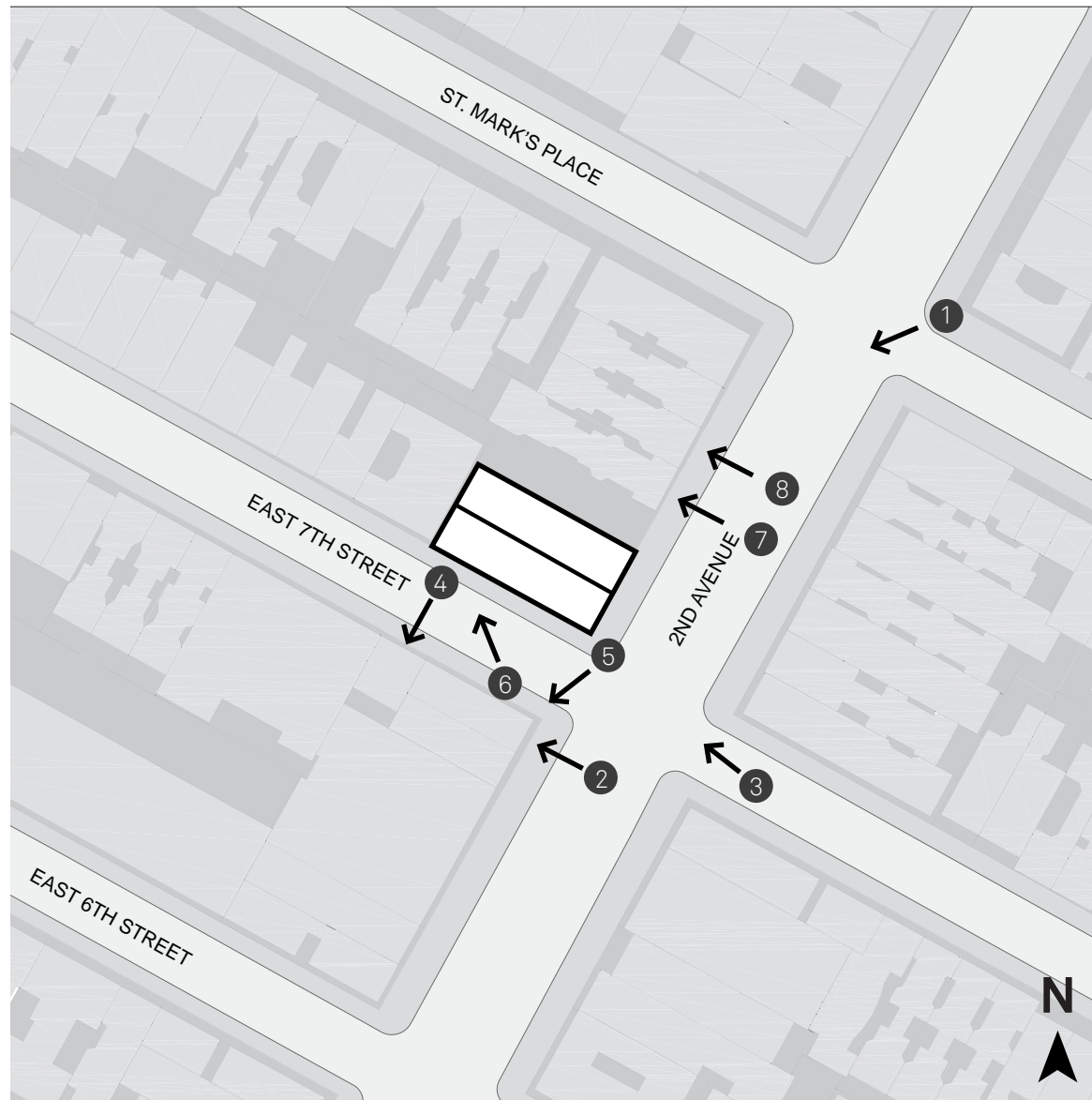
EAST VILLAGE / LOWER EAST SIDE HISTORIC DISTRICT MAP

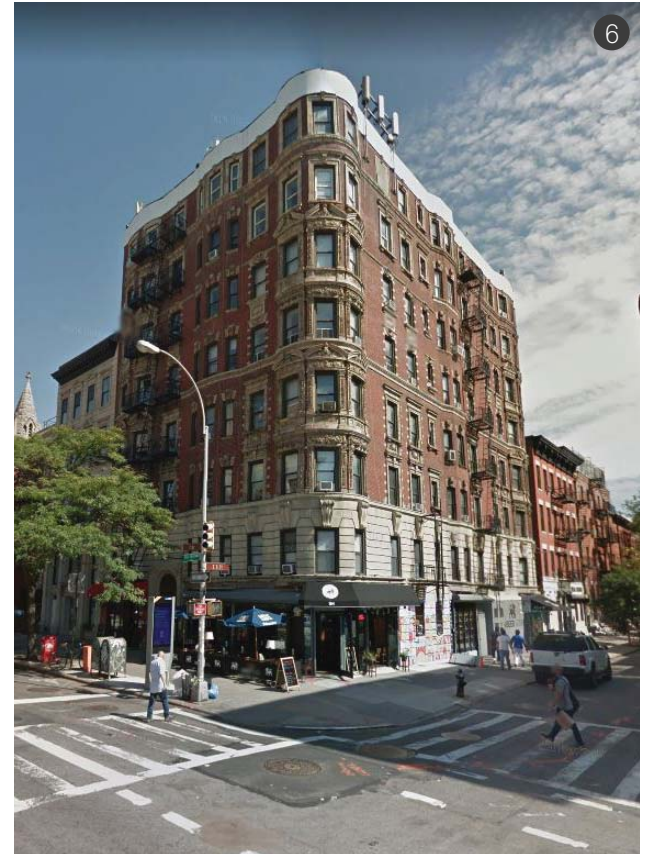
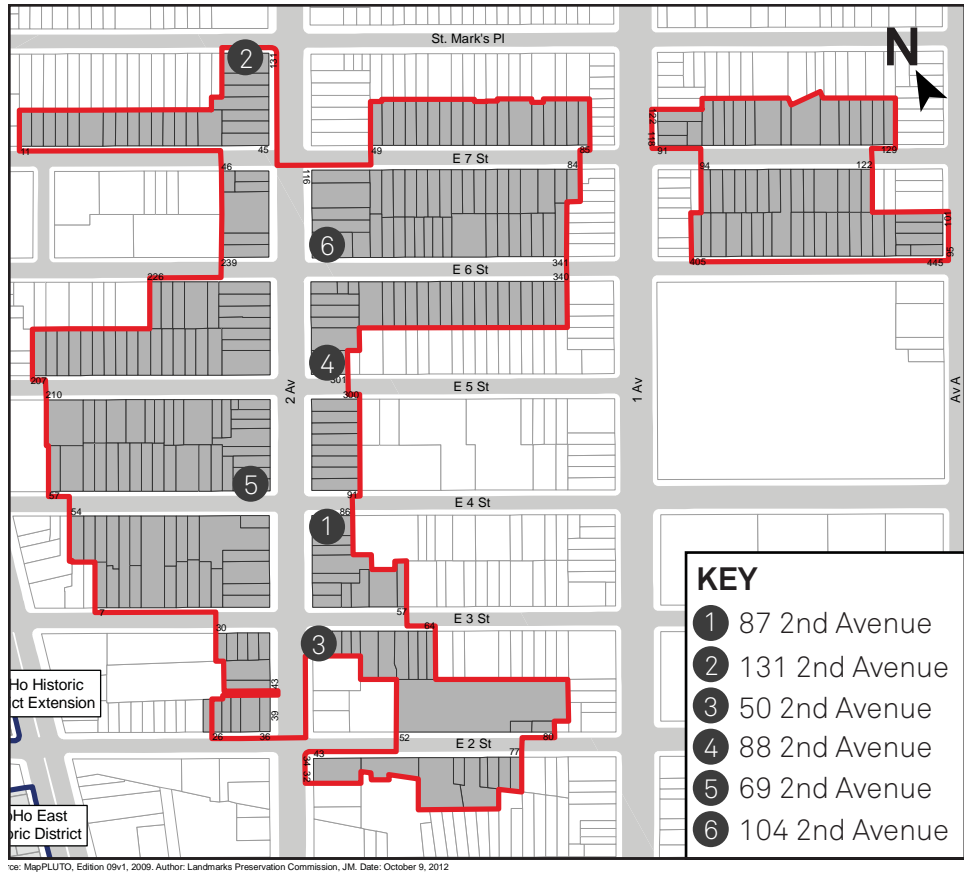


VIEW OF SITE LOOKING WEST FROM 2ND AVENUE





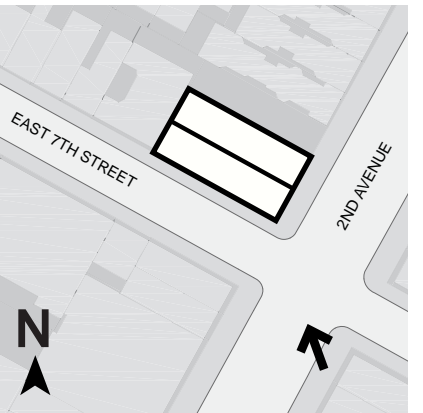


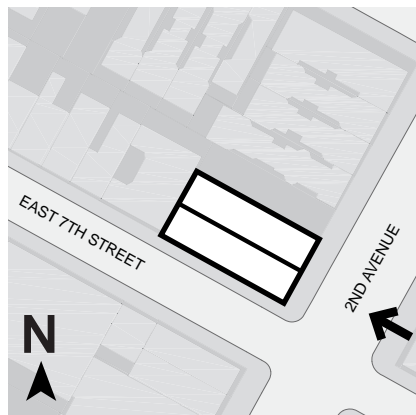




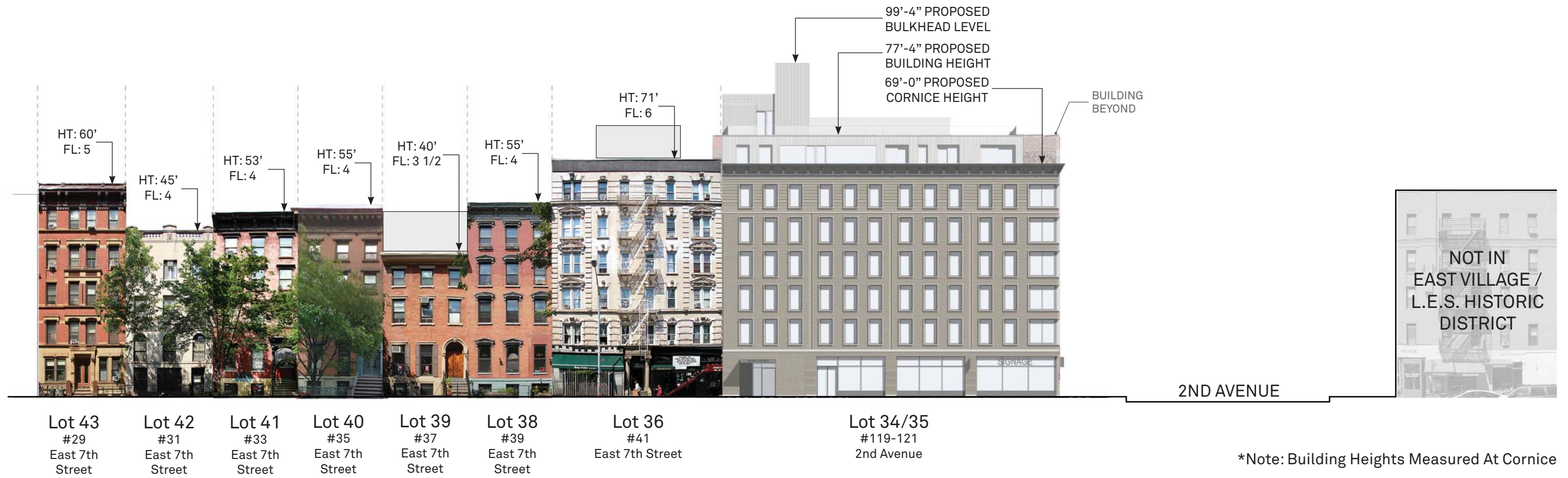
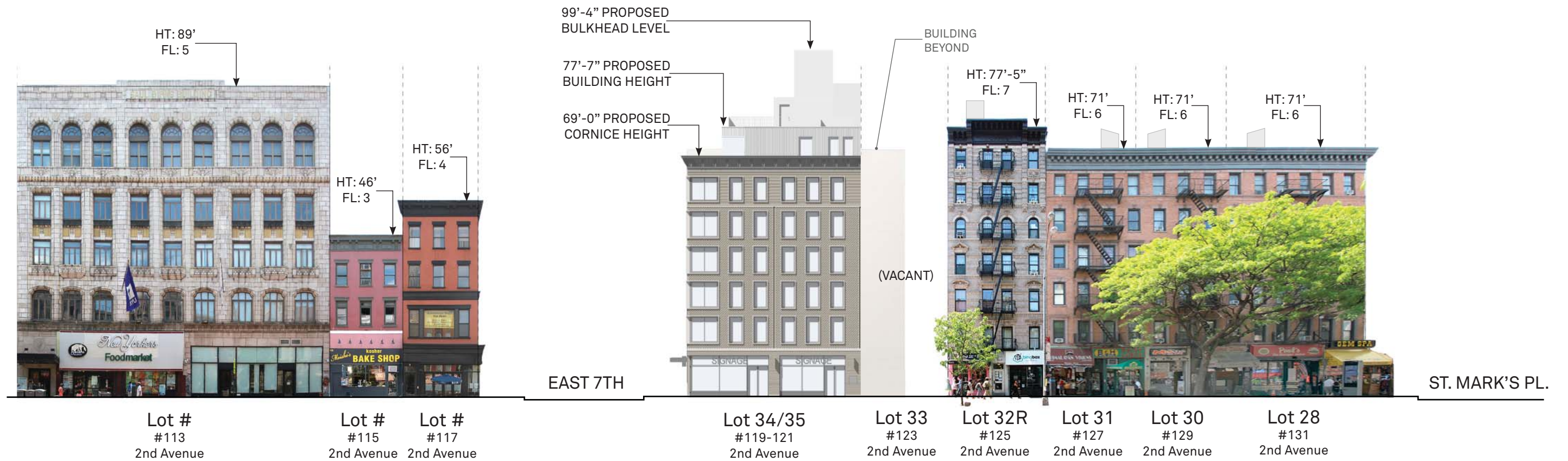












● Elevator - Bulkhead
HT 99' - 4"

● Stair Bulkhead
HT 89' - 7"

● Roof
HT 76' - 11"

● 7th Floor
HT 65' - 0"

● 6th Floor
HT 54' - 0"

● 5th Floor
HT 44' - 0"

● 4th Floor
HT 34' - 0"

● 3rd Floor
HT 24' - 0"

● 2nd Floor
HT 14' - 0"

EAST 7TH

● 1st Floor
HT 0' - 0"













Morris Adjmi Architects
www.ma.com

119-121 2nd Avenue
Nexus Building Development

East Elevation - 2nd Avenue

10 July 2018

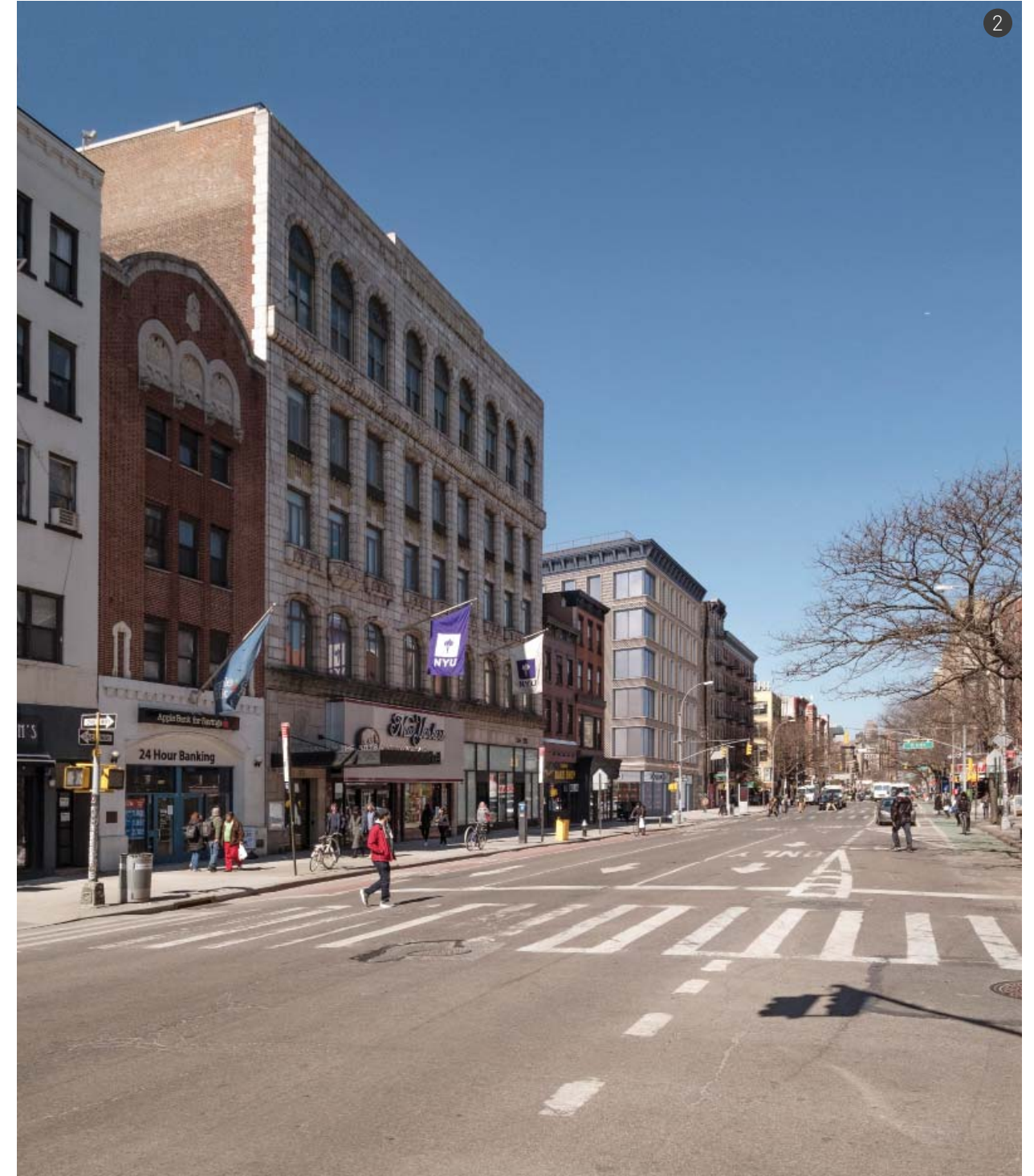
SCALE: 3/32" = 1'-0"

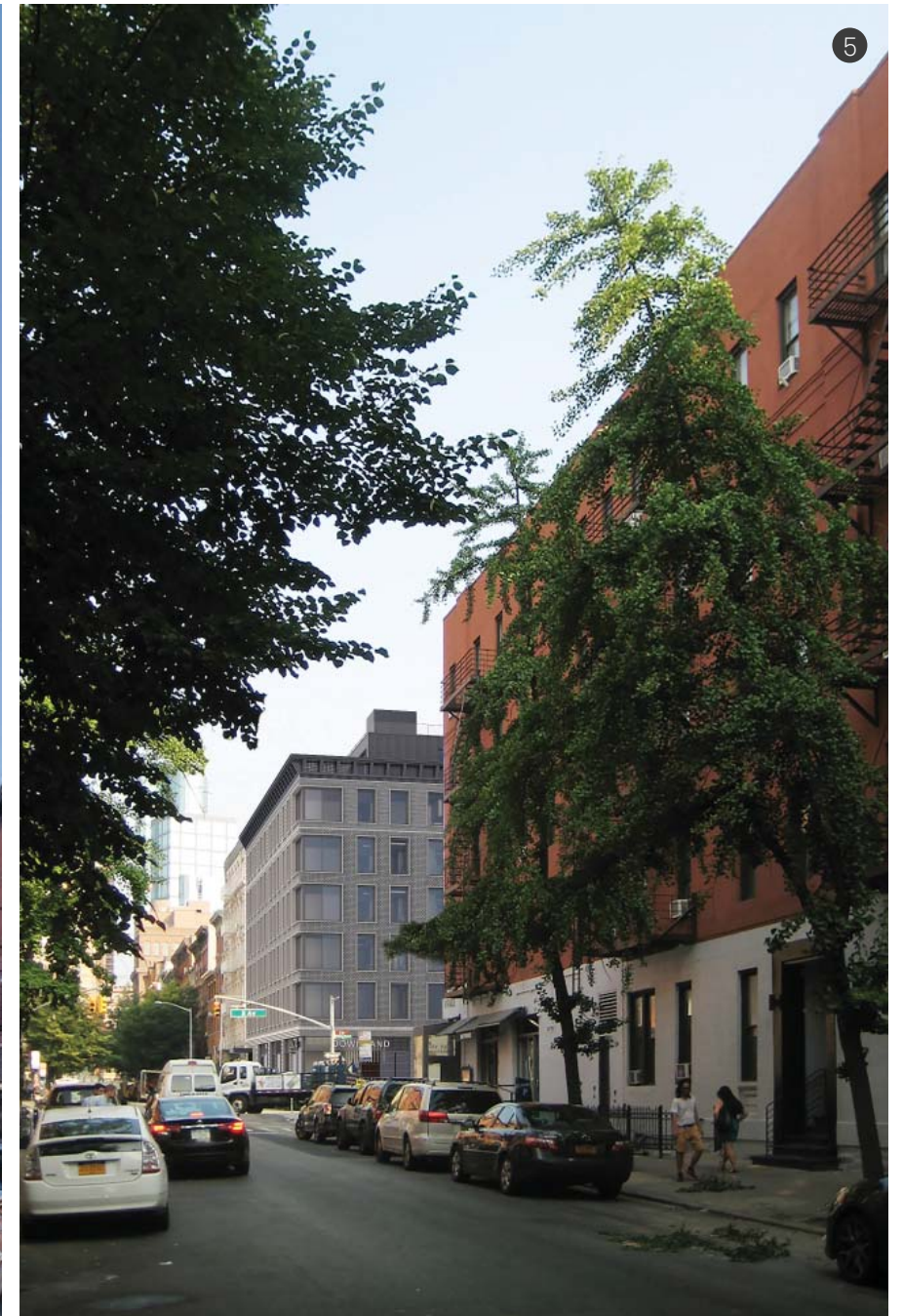
- 
 Elevator Bulkhead
 HT 99' - 4"
- 
 Stair Bulkhead
 HT 89' - 7"
- 
 Roof
 HT 76' - 11"
- 
 7th Floor
 HT 65' - 0"
- 
 6th Floor
 HT 54' - 0"
- 
 5th floor
 HT 44' - 0"
- 
 4th Floor
 HT 34' - 0"
- 
 3rd Floor
 HT 24' - 0"
- 
 2nd Floor
 HT 14' - 0"
- 
 1st Floor
 HT 0' - 0"



2ND AVENUE

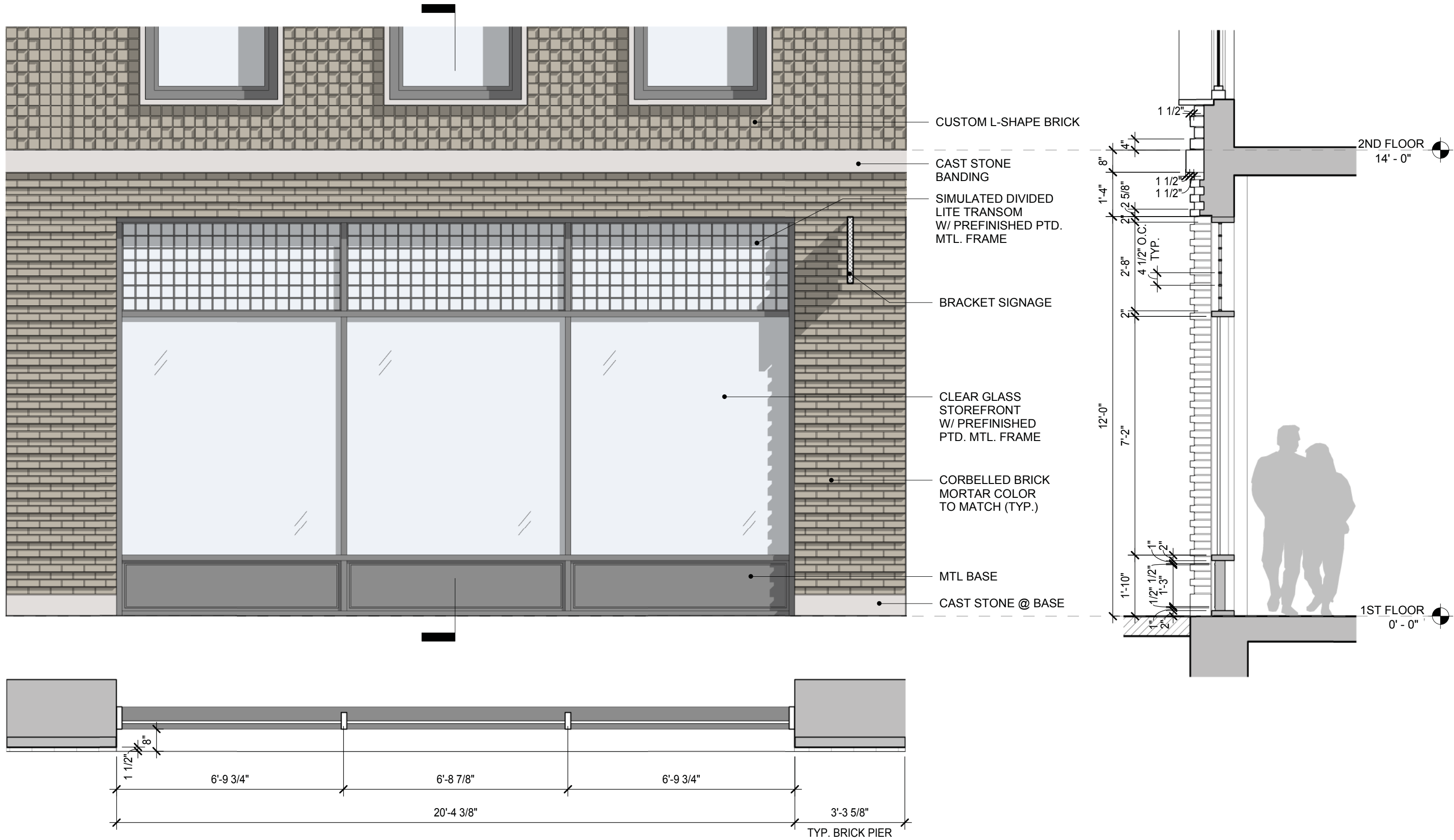


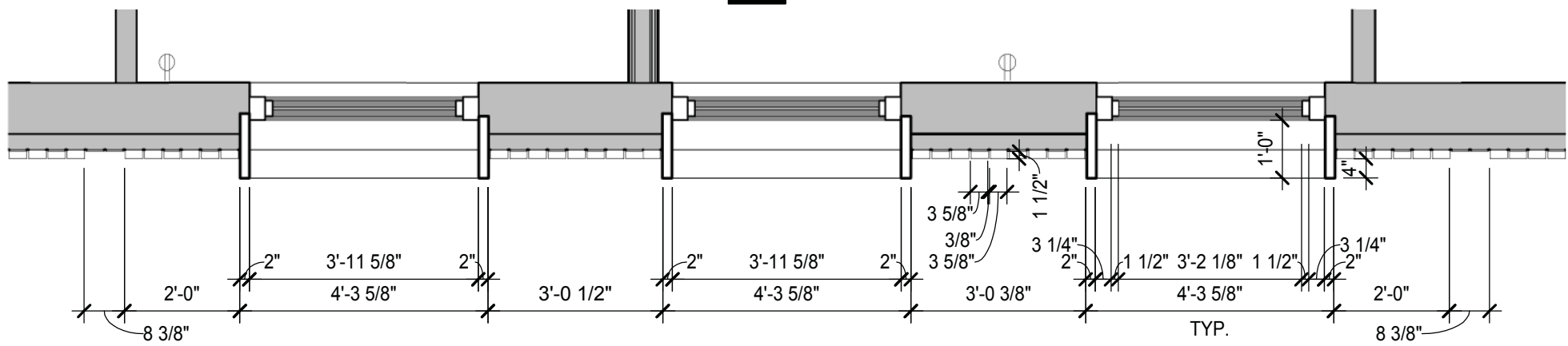
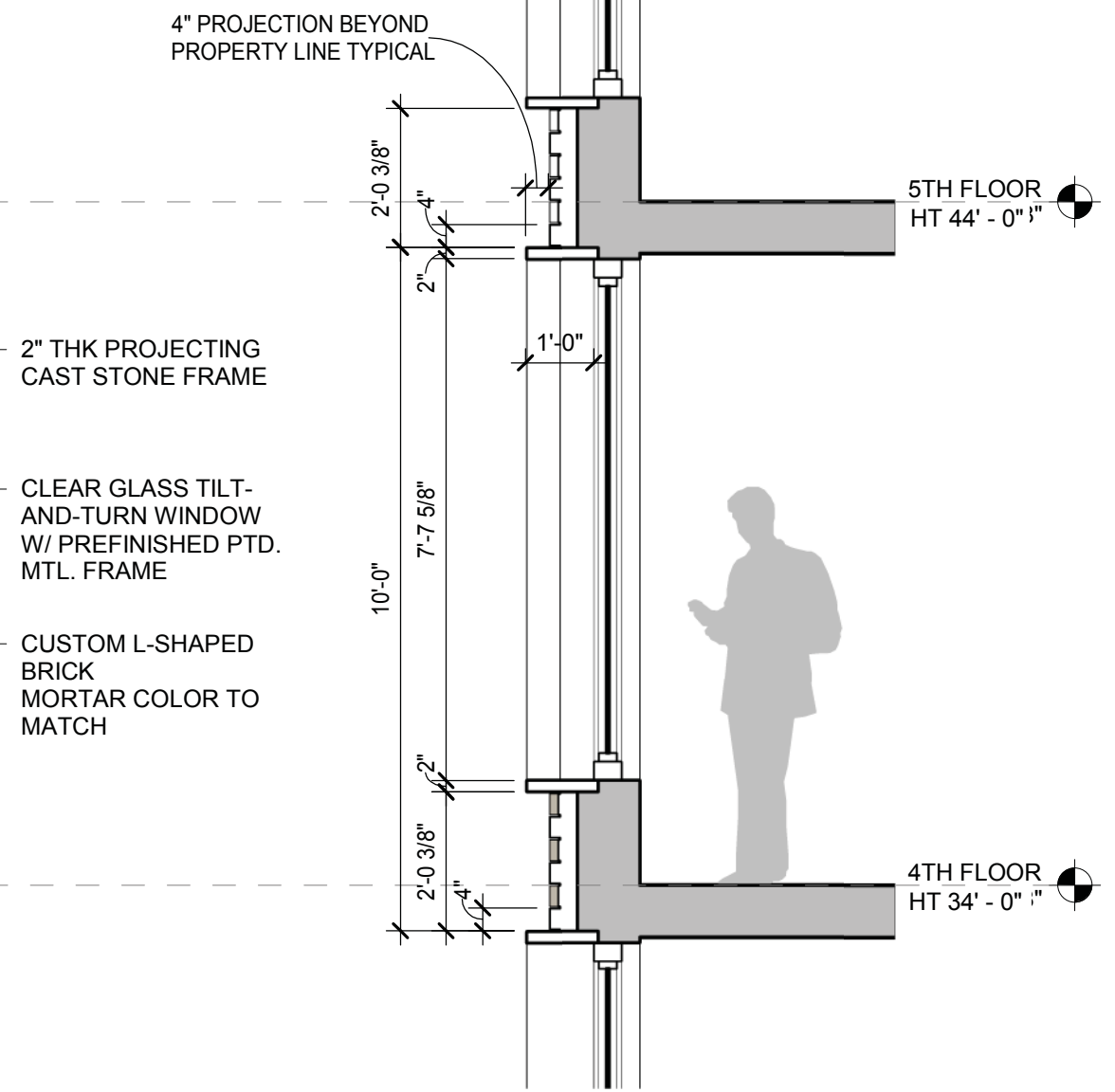
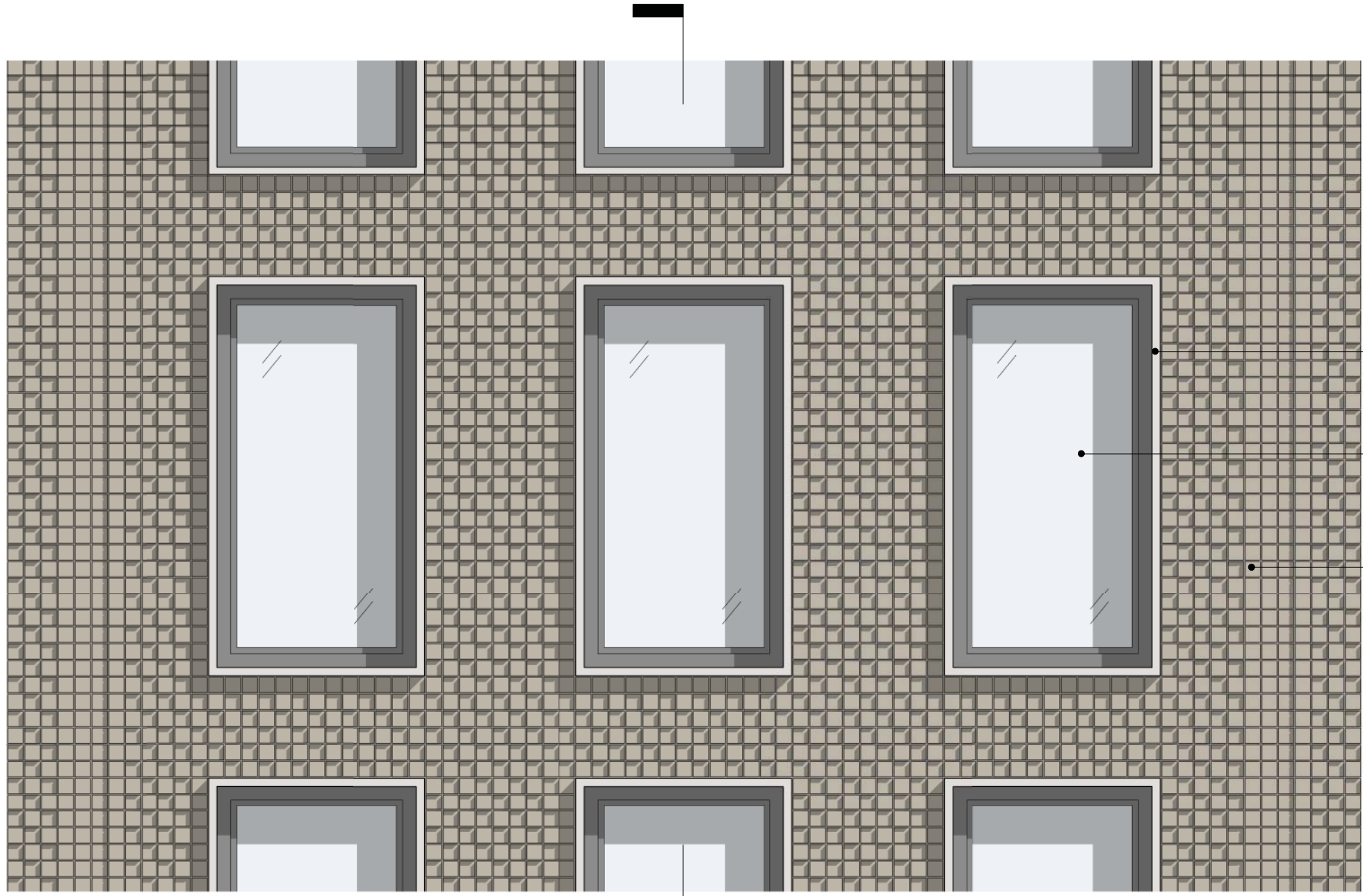


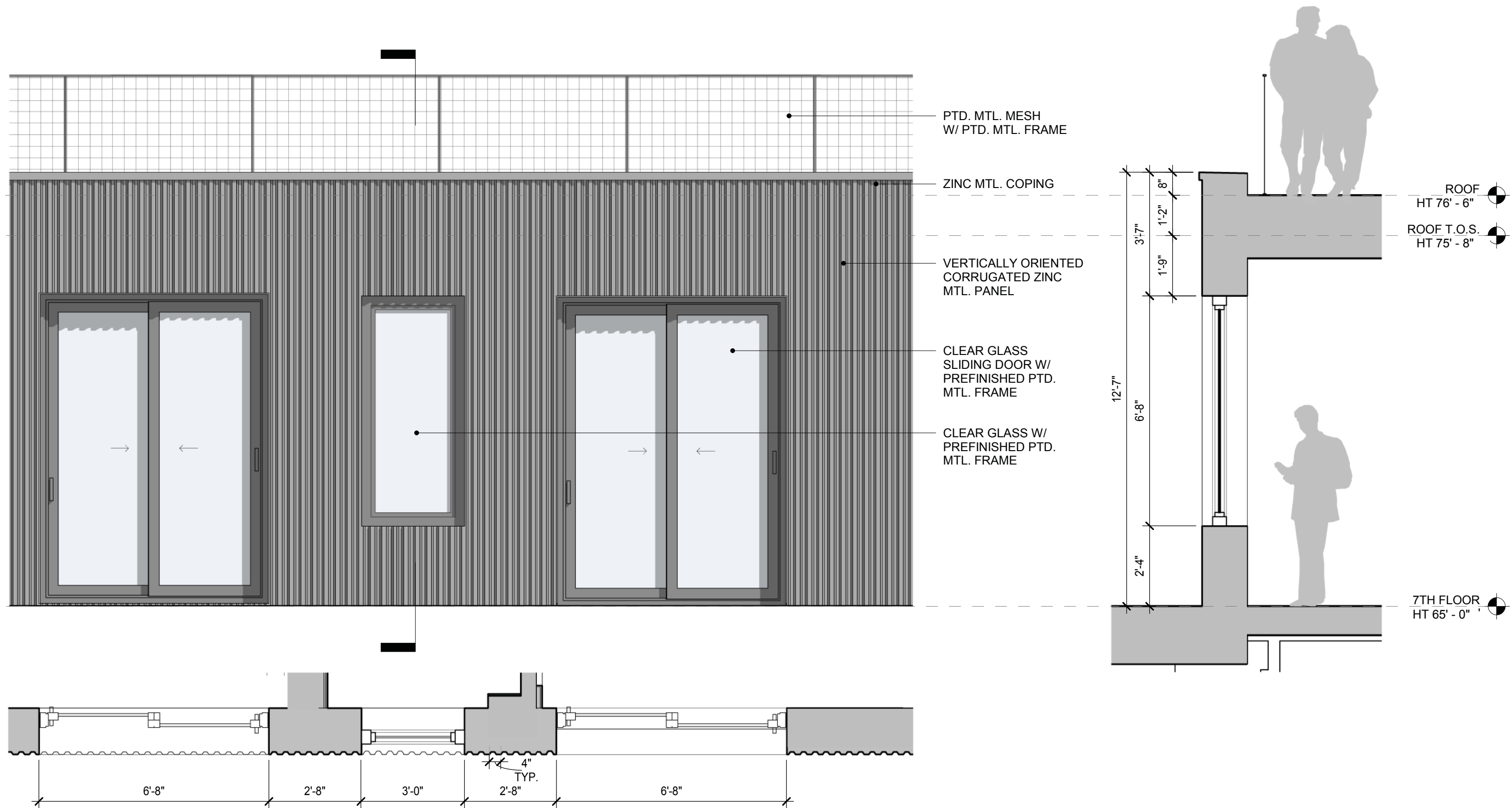


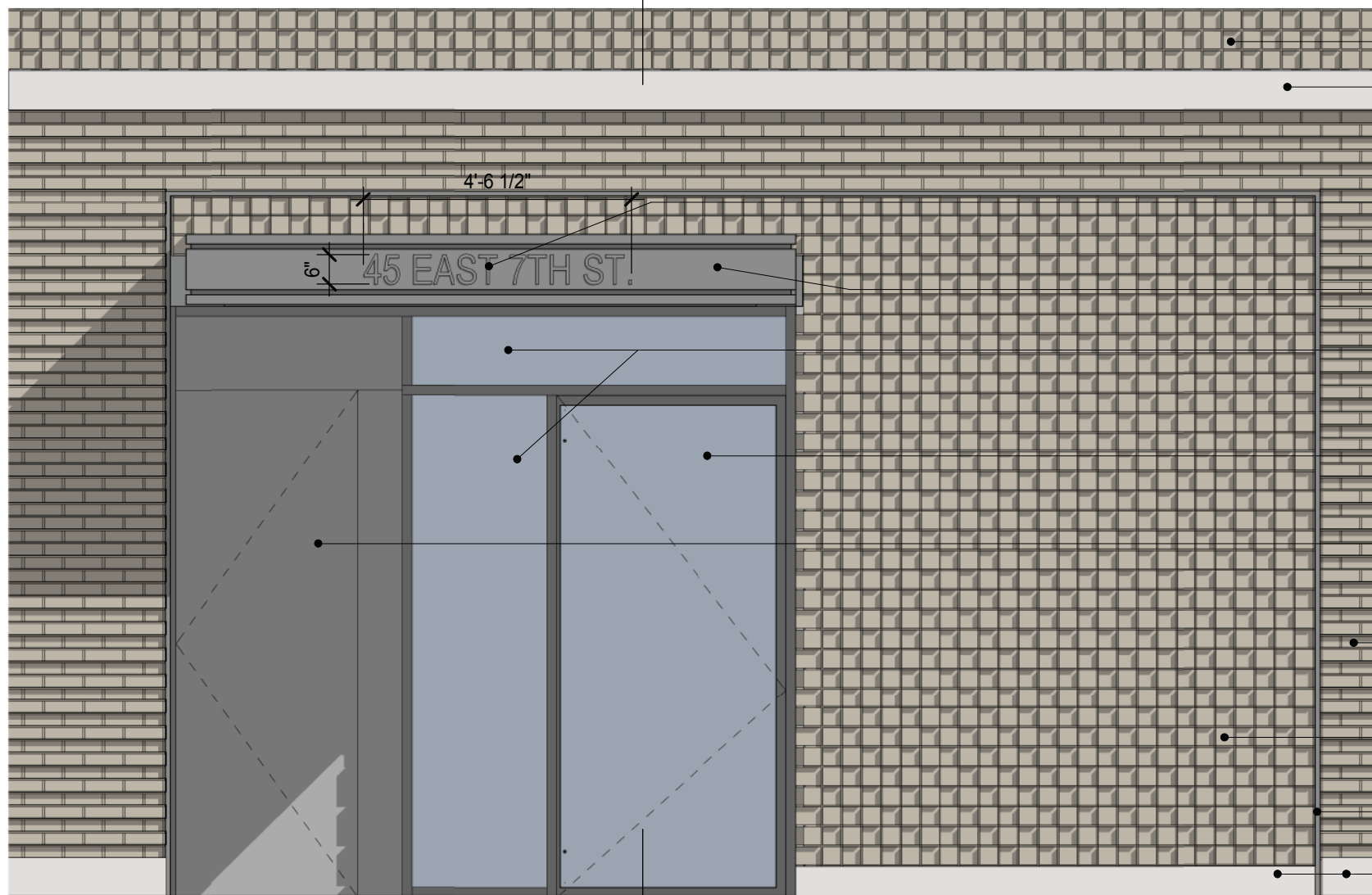




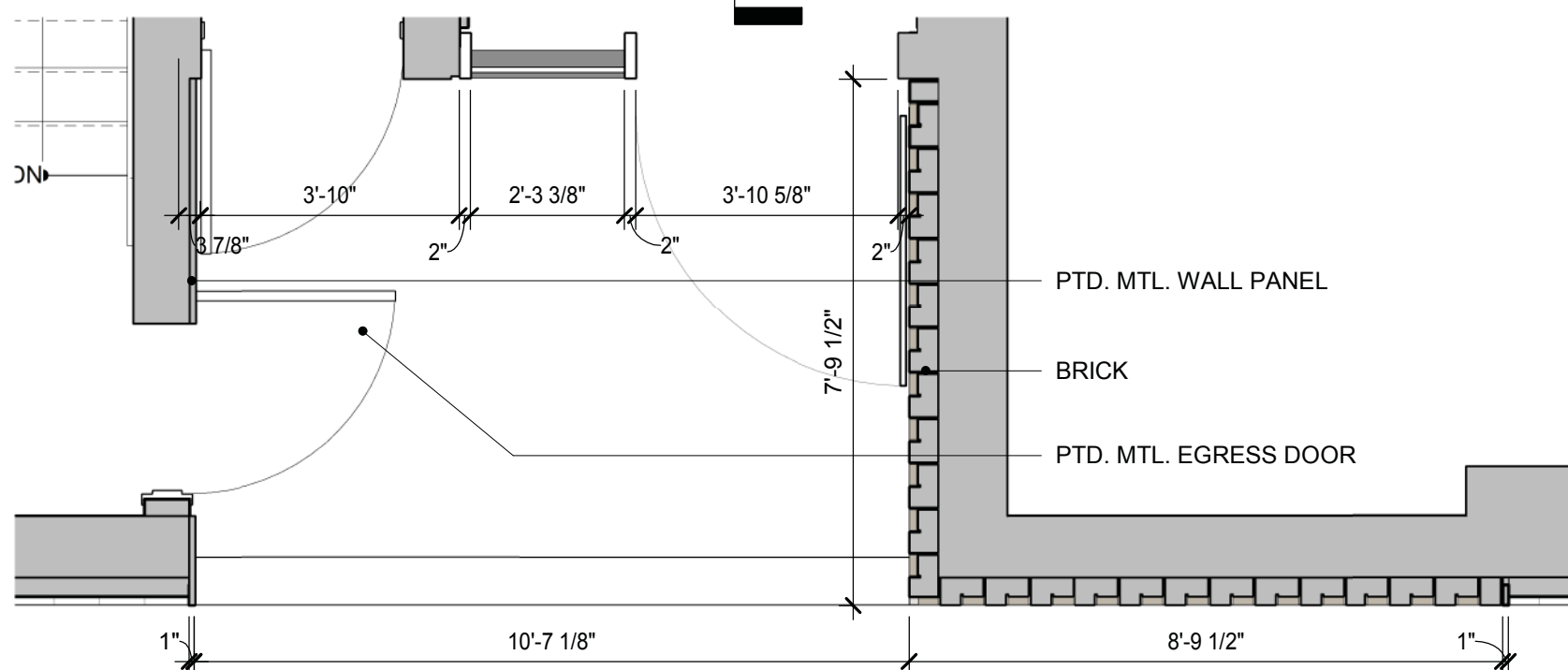
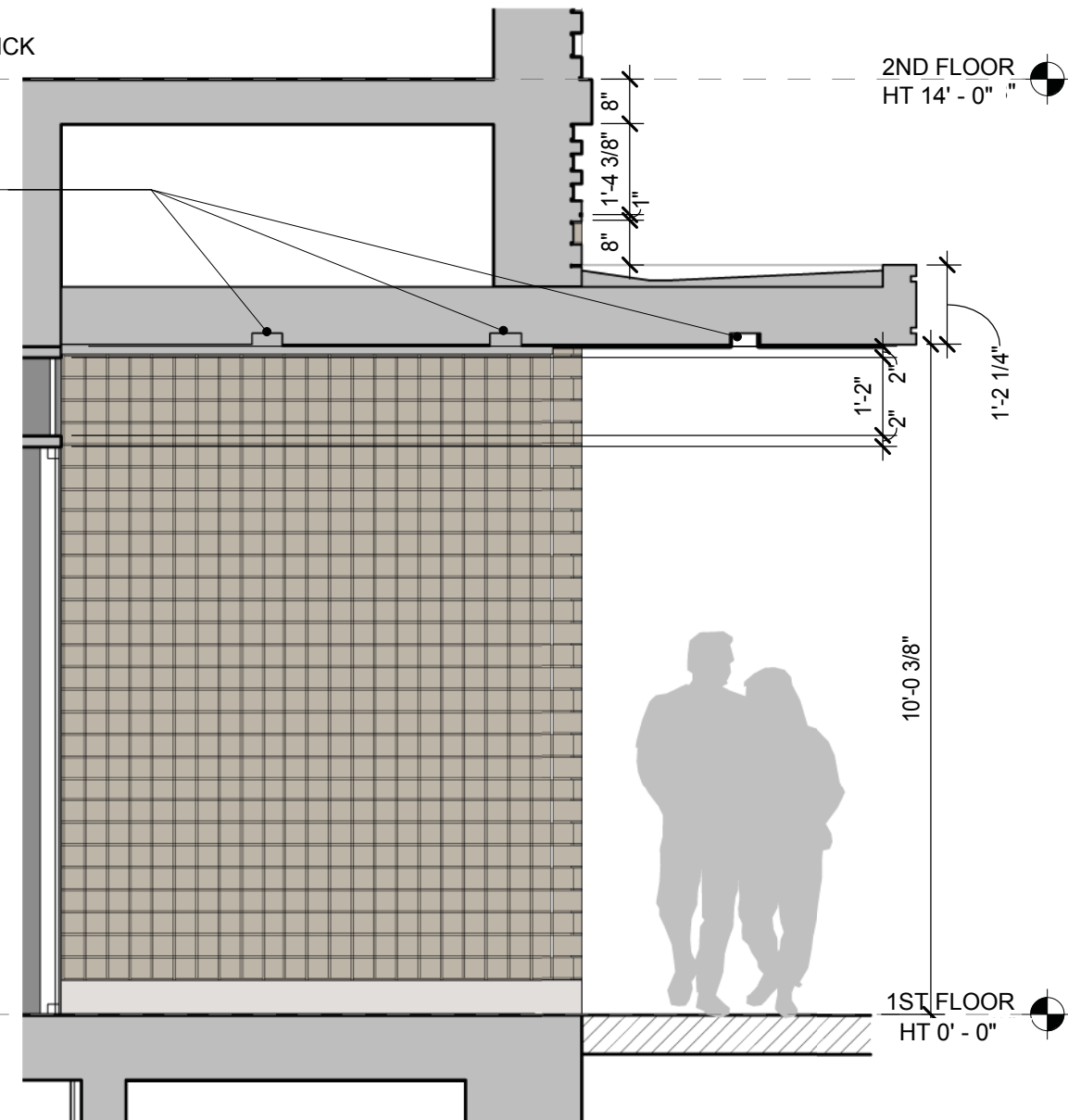








- CUSTOM L-SHAPE BRICK
- CAST STONE SUB-CORNICE
- RECESSED DOWNLIGHTS
- RESIDENTIAL ADDRESS SIGNAGE CUTOUT
- PREFINISHED PTD. MTL. MARQUEE
- CLEAR GLASS TRANSOM AND SIDE LITE W/ PREFINISHED PTD. MTL. FRAME
- CLEAR GLASS DOOR W/ PREFINISHED PTD. MTL. FRAME
- PREFINISHED PTD. MTL. SOLID PANEL EGRESS DOOR
- CORBELLED BRICK MORTAR COLOR TO MATCH (TYP.)
- CUSTOM L-SHAPE BRICK
- PREFINISHED PTD. MTL. INLAY
- CAST STONE @ BASE



- PTD. MTL. WALL PANEL
- BRICK
- PTD. MTL. EGRESS DOOR



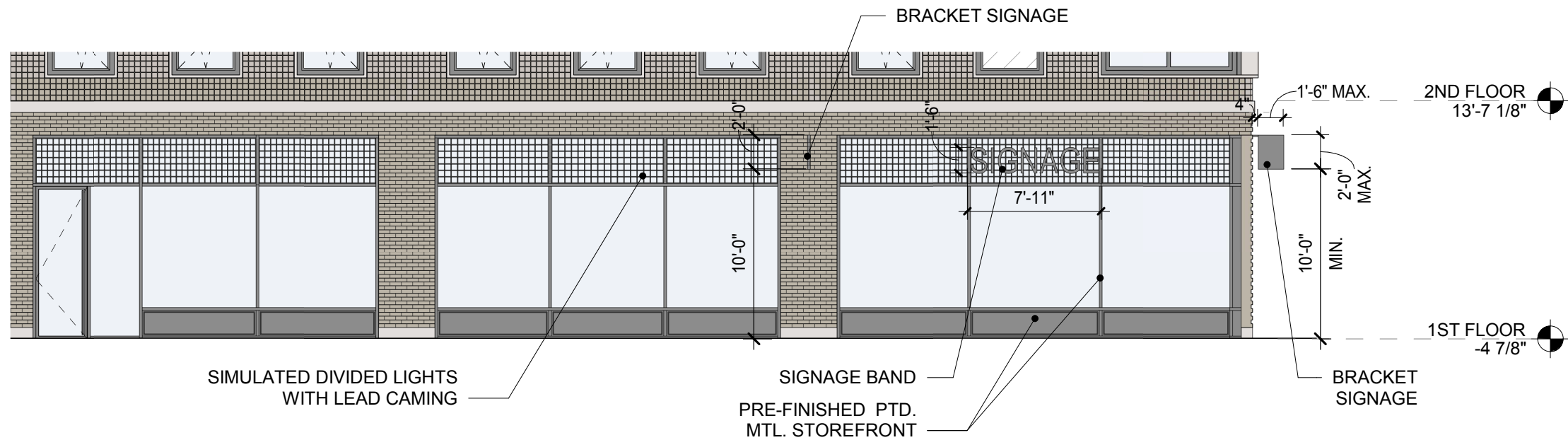
Morris Adjmi Architects
www.ma.com

119-121 2nd Avenue
Nexus Building Development

Detail Elevation - Residential Entrance

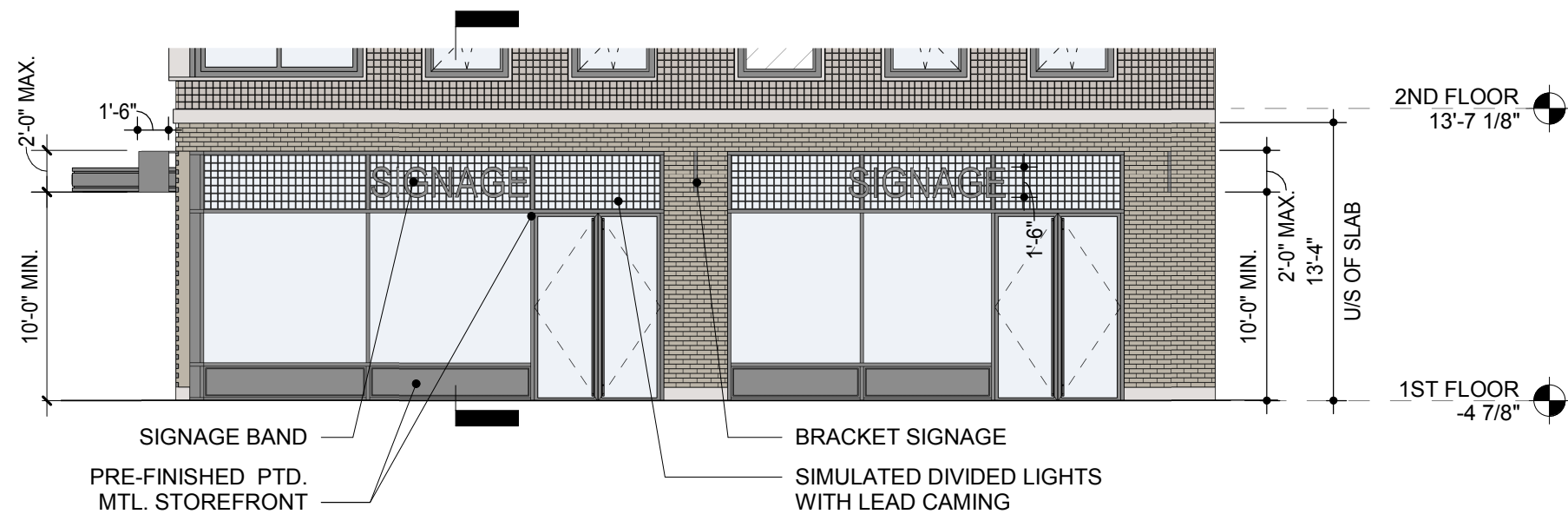
10 July 2018

SCALE: 3/8" = 1'-0"



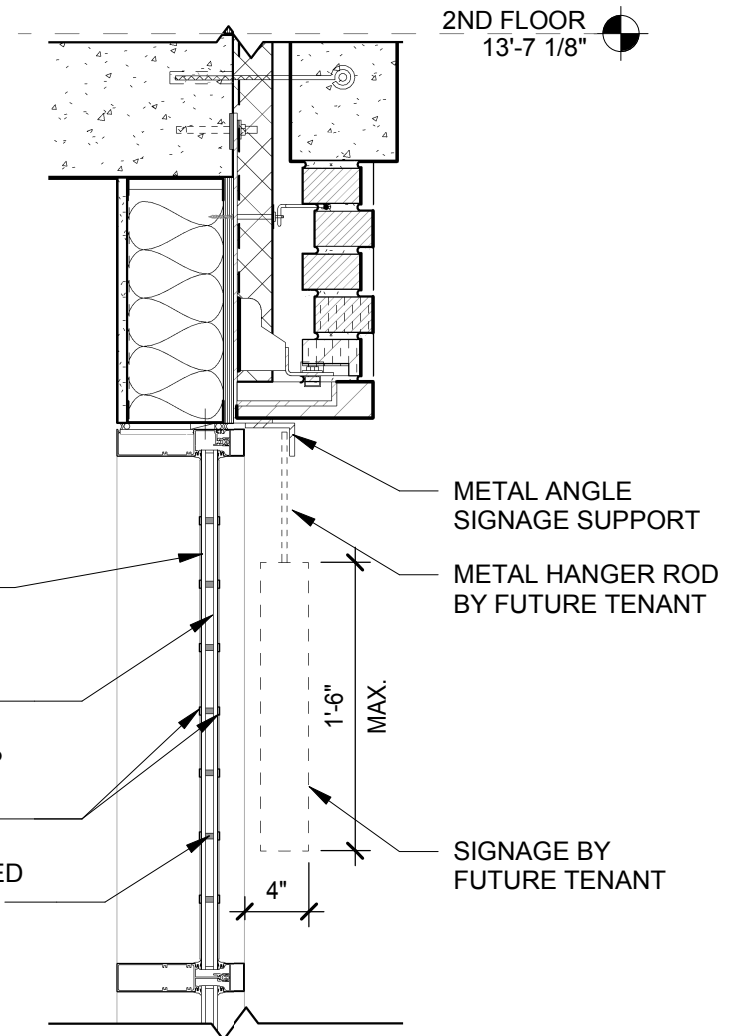
1 7TH STREET (SOUTH) STOREFRONT ELEVATION

1/8" = 1'-0"



2 2ND AVENUE (EAST) ELEVATION

1/8" = 1'-0"



3 COMMERCIAL SIGNAGE

1" = 1'-0"



RESIDENTIAL ENTRANCE



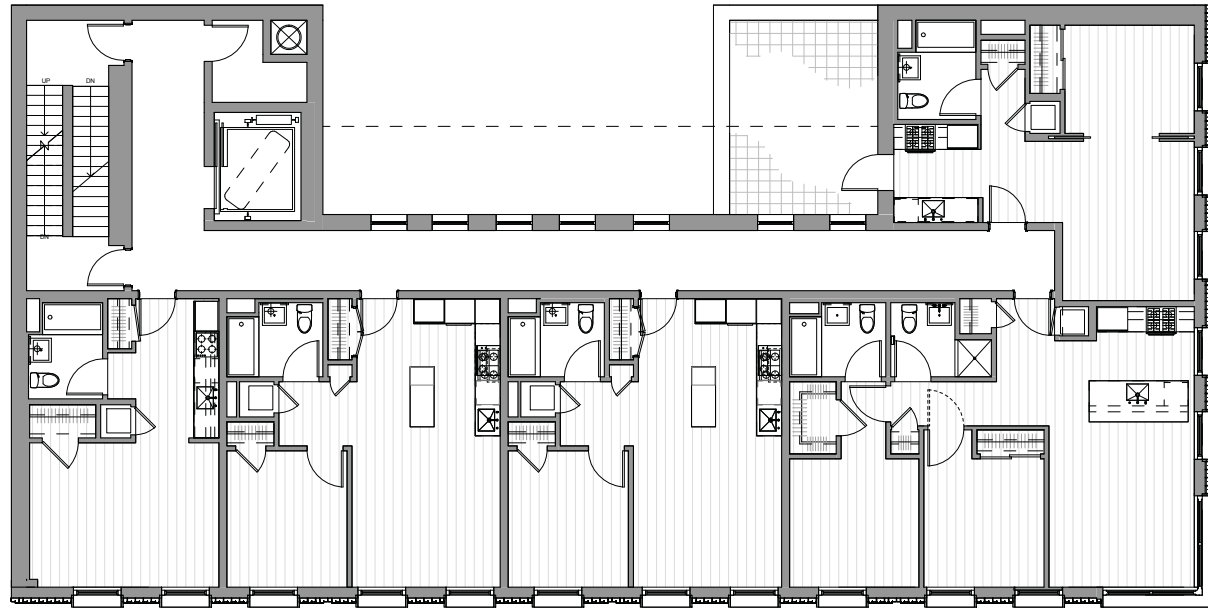
CORNER WINDOW AT STOREFRONT



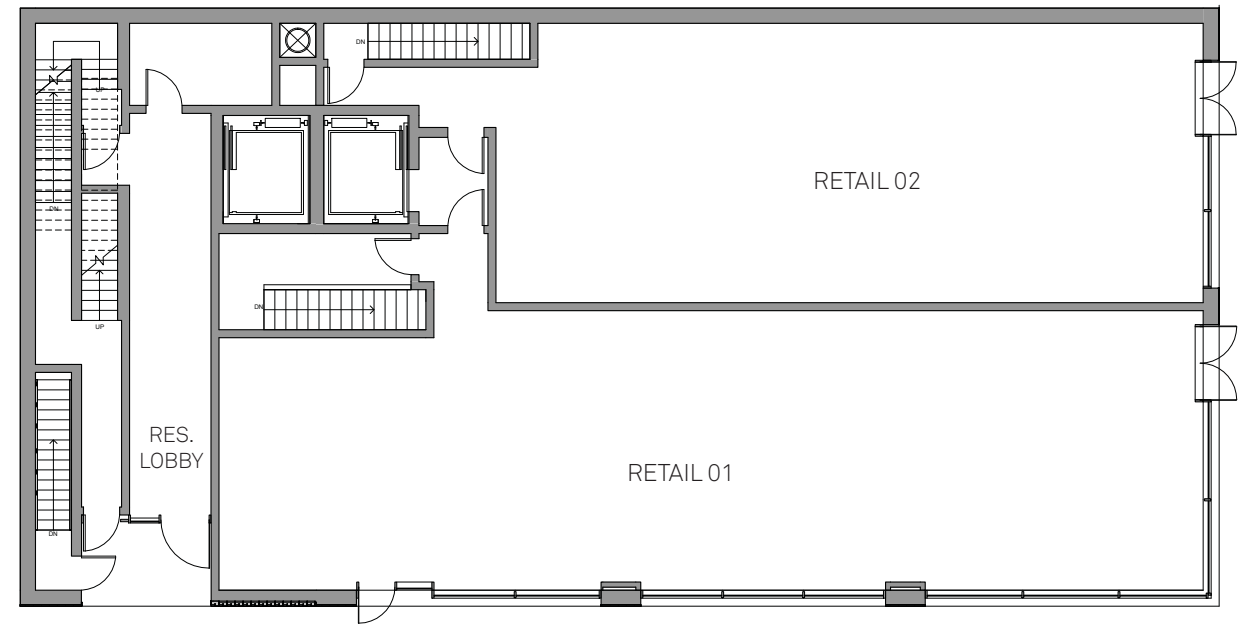
CORNER WINDOW AT TYPICAL RESIDENTIAL FLOOR



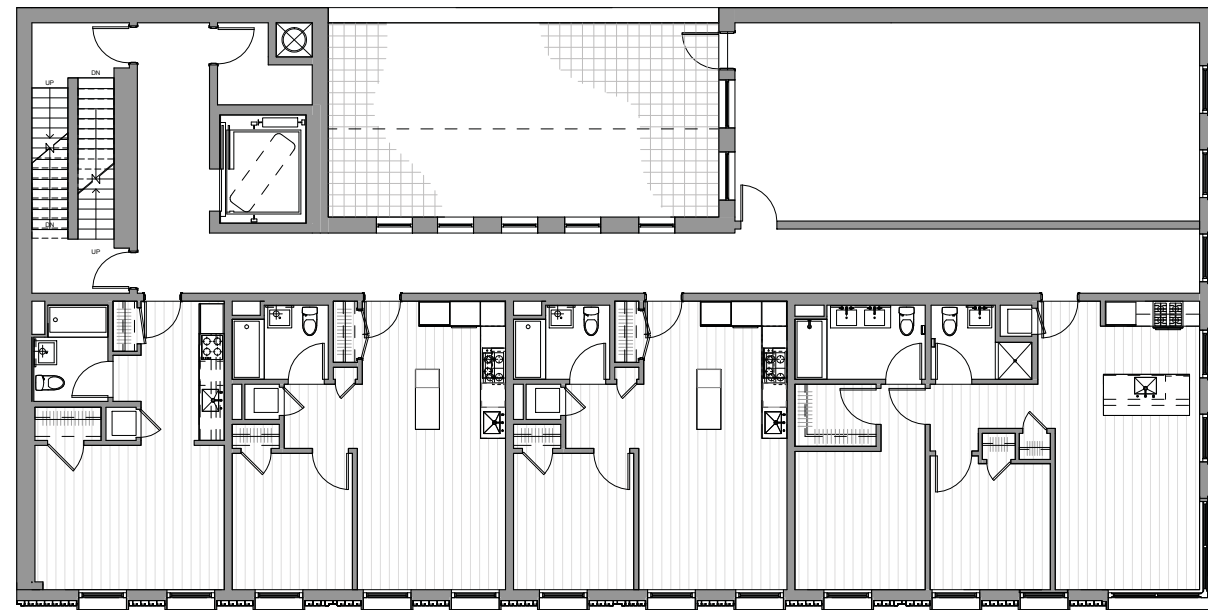
CORNER WINDOW AT CORNICE



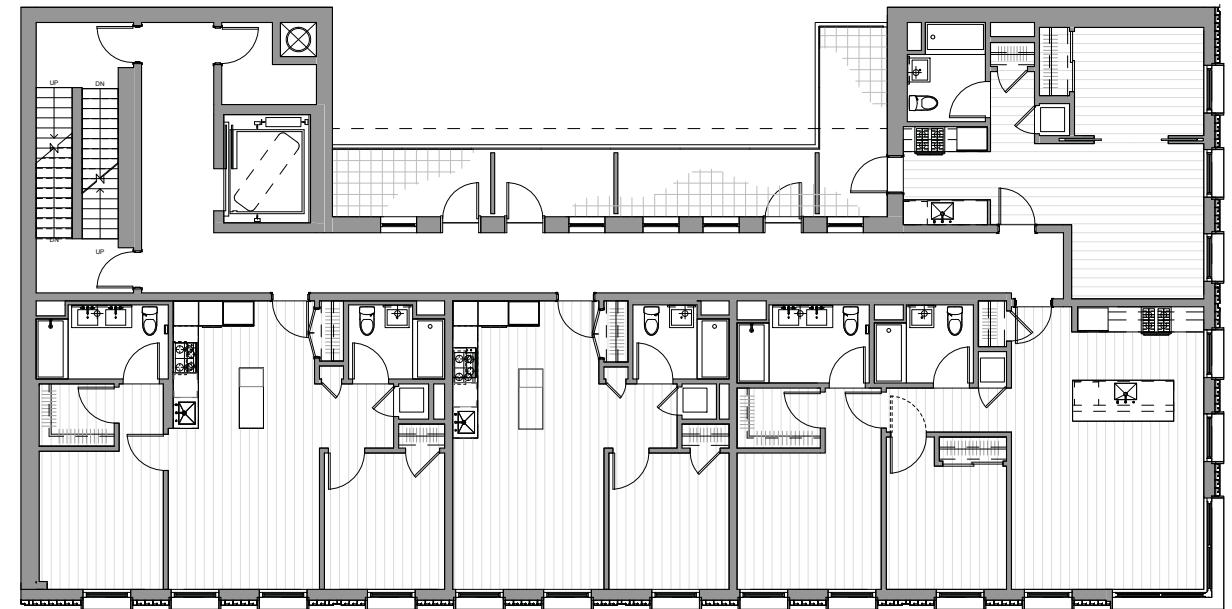
3RD FLOOR



1ST FLOOR

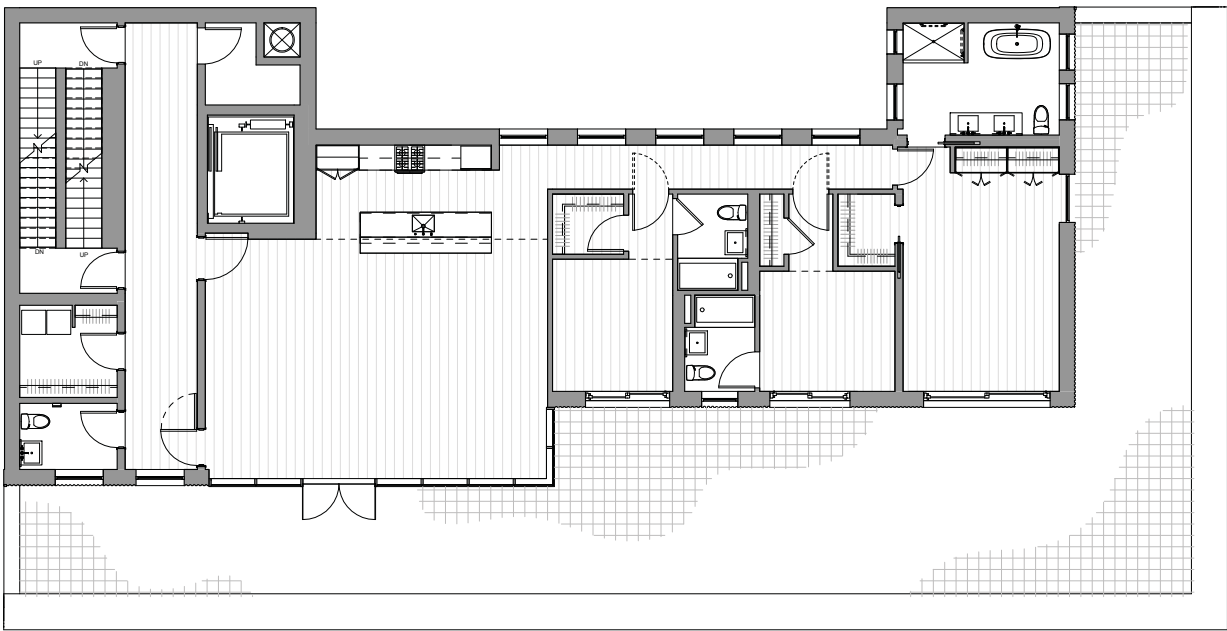


2ND FLOOR

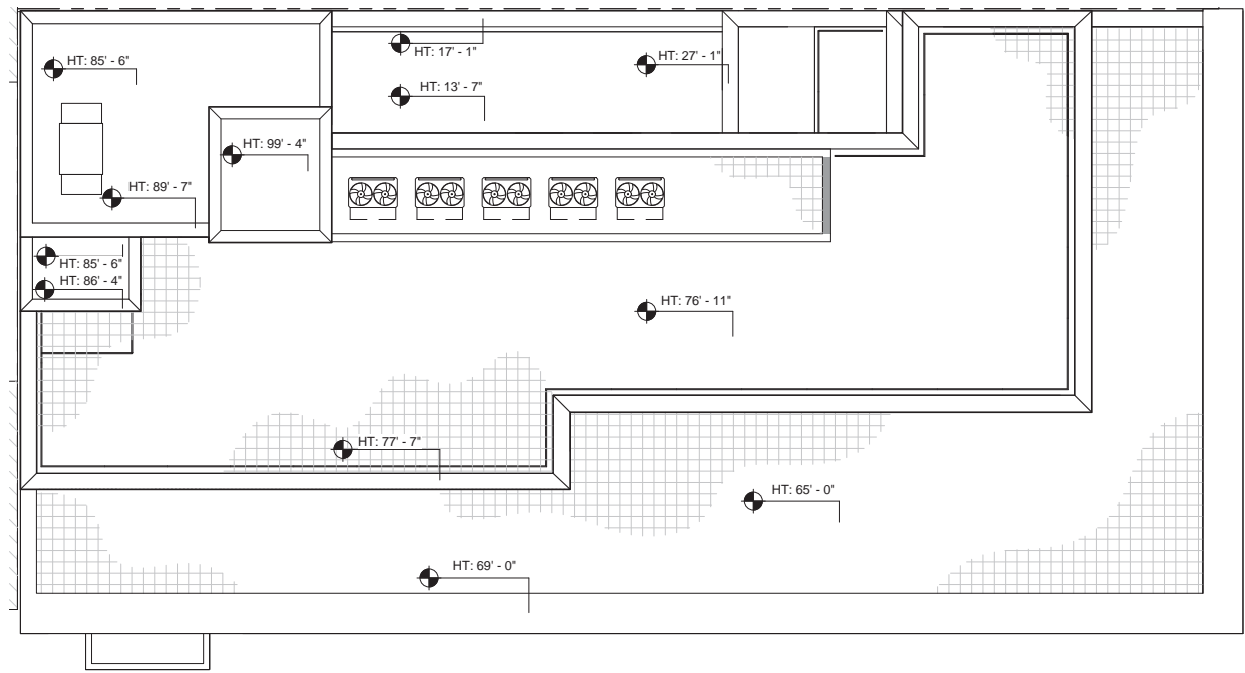


4TH AND 5TH FLOOR

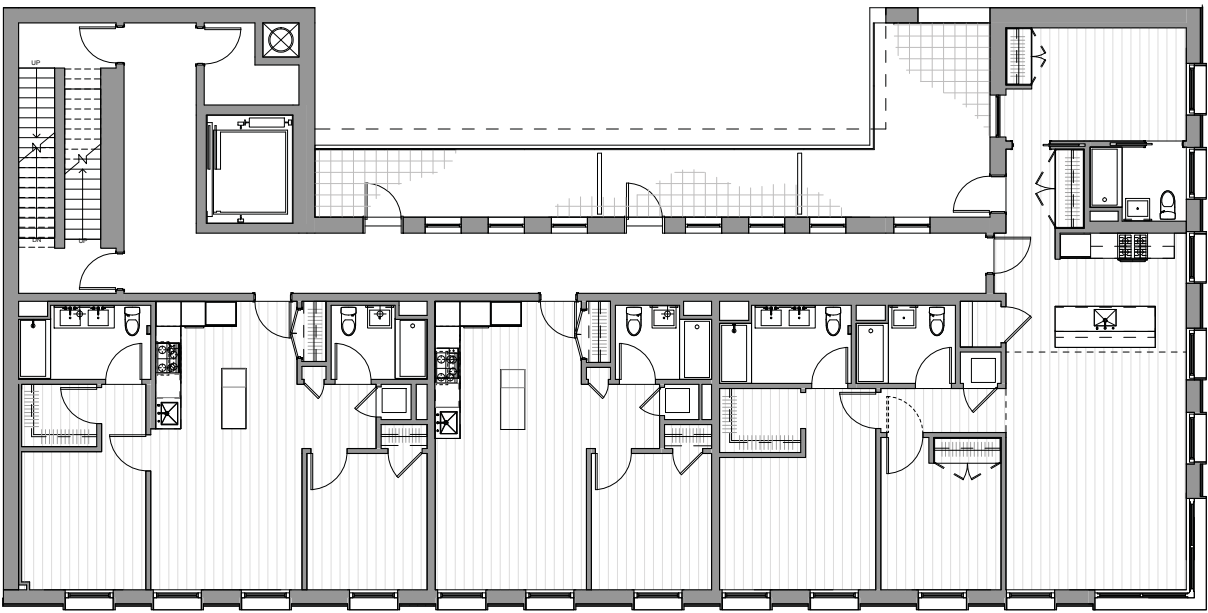




7TH FLOOR



ROOF PLAN



6TH FLOOR



GREY BRICK: BASE, BODY AND FRIEZE, RESIDENTIAL ENTRY
COLOR: GLEN GERY - OYSTER GREY



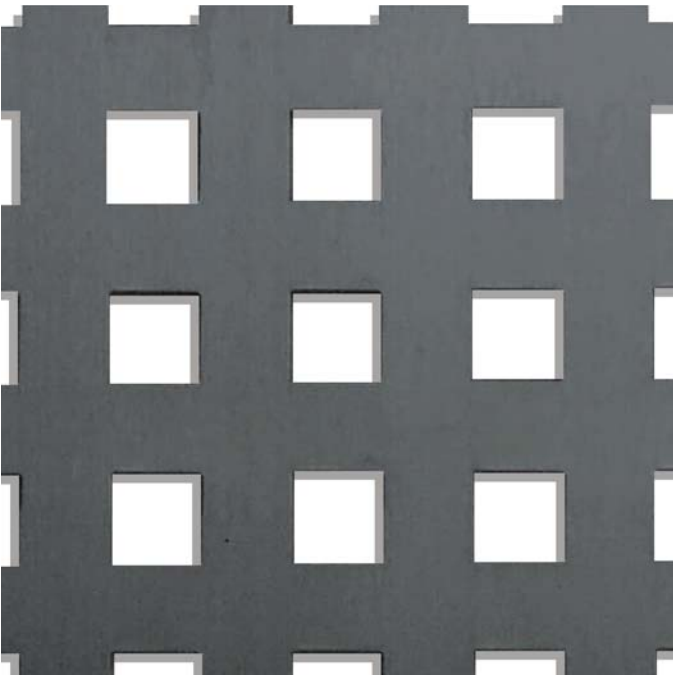
CAST STONE: WINDOW SURROUNDS,
BANDING. COLOR: CORINTHAN CAST
STONE INC. - LS17C



CORRUGATED ZINC: PENTHOUSE AND
BULKEAD FACADE. COLOR:
PRE-WEATHERED VM ZINC - QUARTZ
ZINC



PAINTED METAL: STOREFRONT, WINDOW
FRAMES, RESIDENTIAL ENTRANCE,
CORNICE AND GUARDRAIL. ALL PAINTED
METAL TO BE PPG -DURANAR STAUB
GRAY.



PERFORATED METAL PANEL:
1" SQUARE OPENING AT 2"
SPACING. PANEL COLOR TO BE
PPG - DURANAR STAUB GRAY