

PROPOSED ROOFTOP TEMPORARY WINTER STRUCTURES

PIER 17

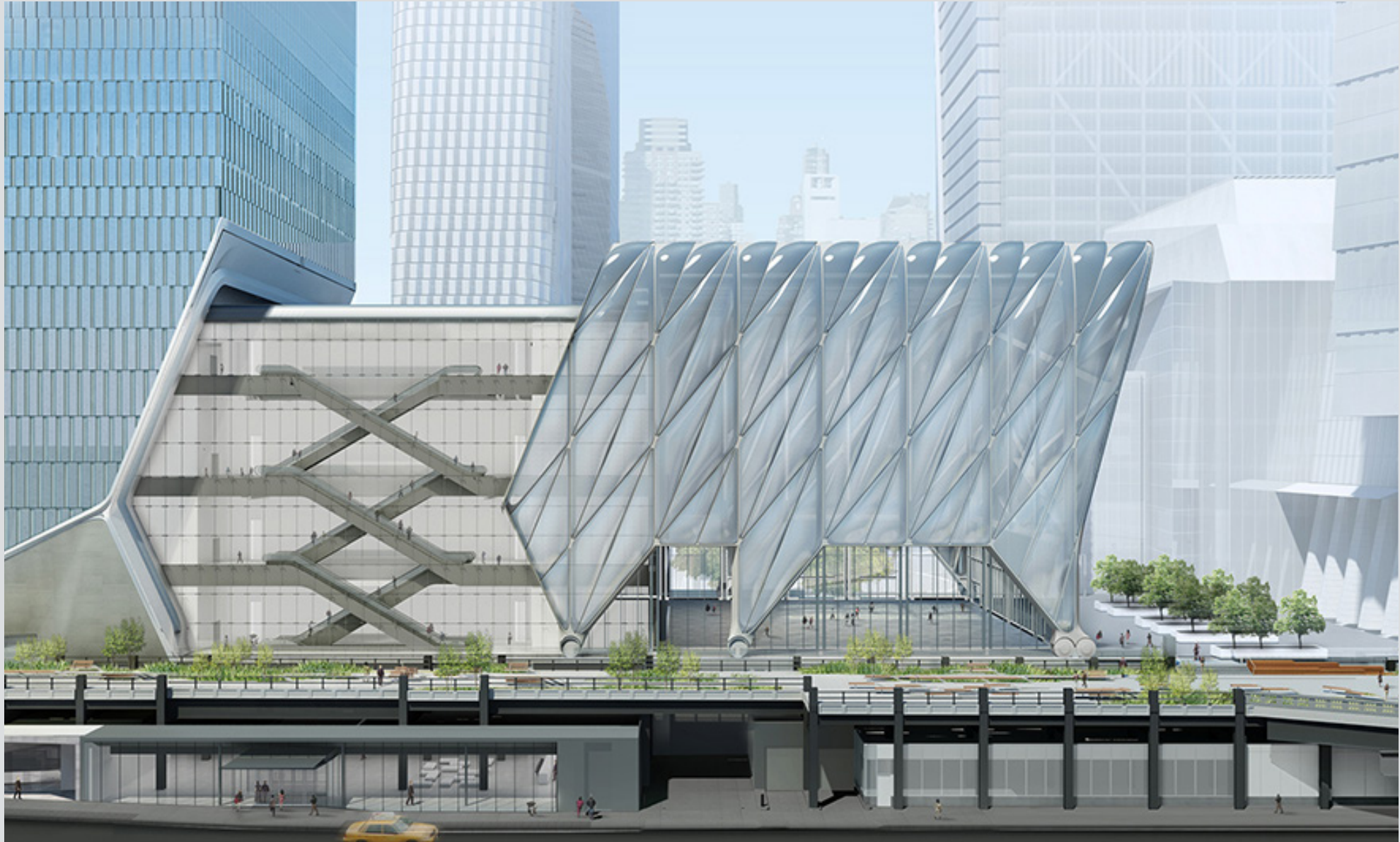
SEAPORT DISTRICT NYC

Howard Hughes.



DAVID ROCKWELL

Based in New York with a satellite office in Madrid, Rockwell Group is an interdisciplinary architecture and design firm that emphasizes innovation and thought leadership in every project. Founded by David Rockwell, FAIA, and led by David and partners Shawn Sullivan and Greg Keffer, the 250-person firm uses theater, technology, and finely-wrought craft to create extraordinary experiences and built environments across the globe.



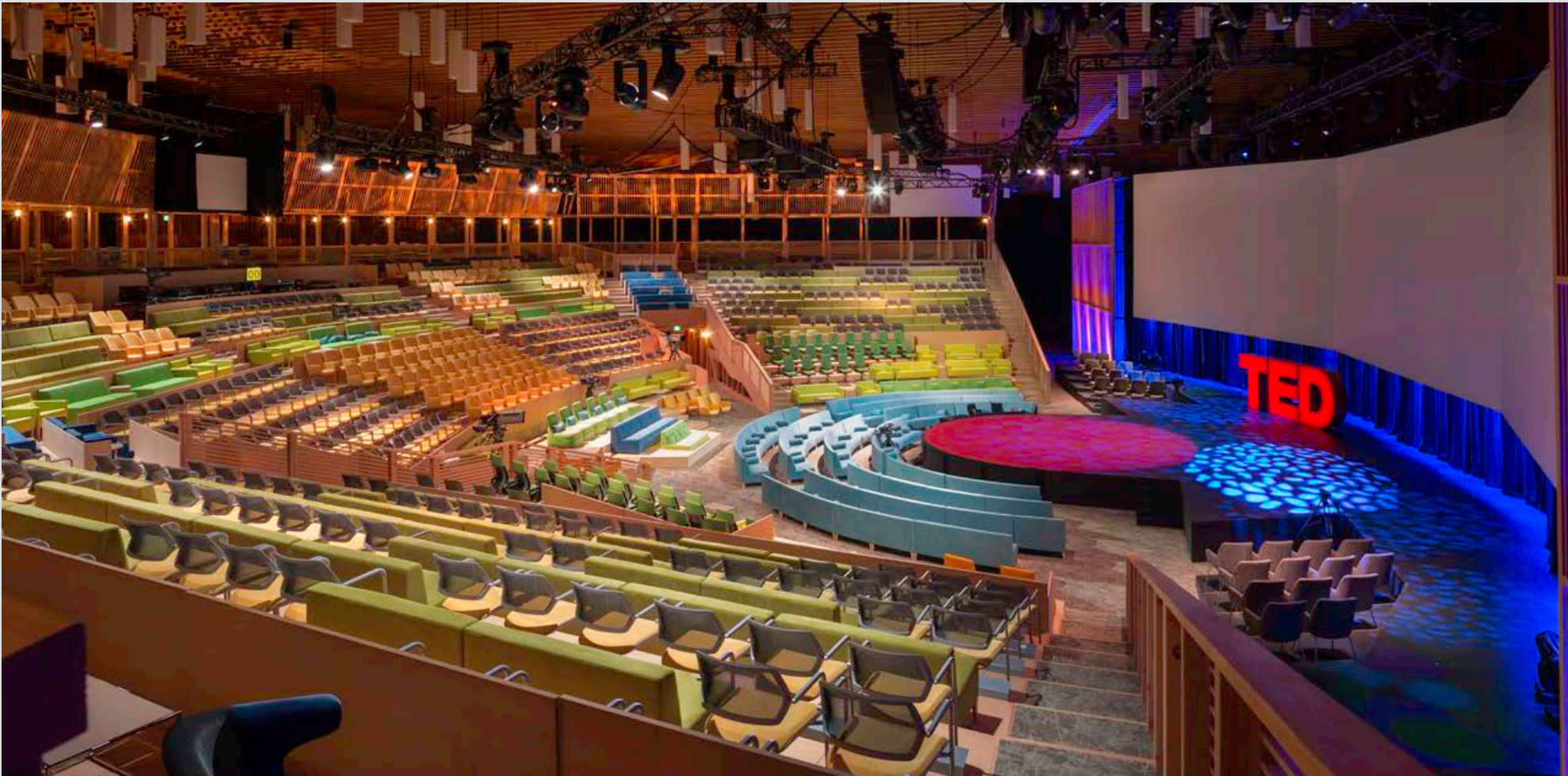
THE SHED



IMAGINATION PLAYGROUND



TED THEATER



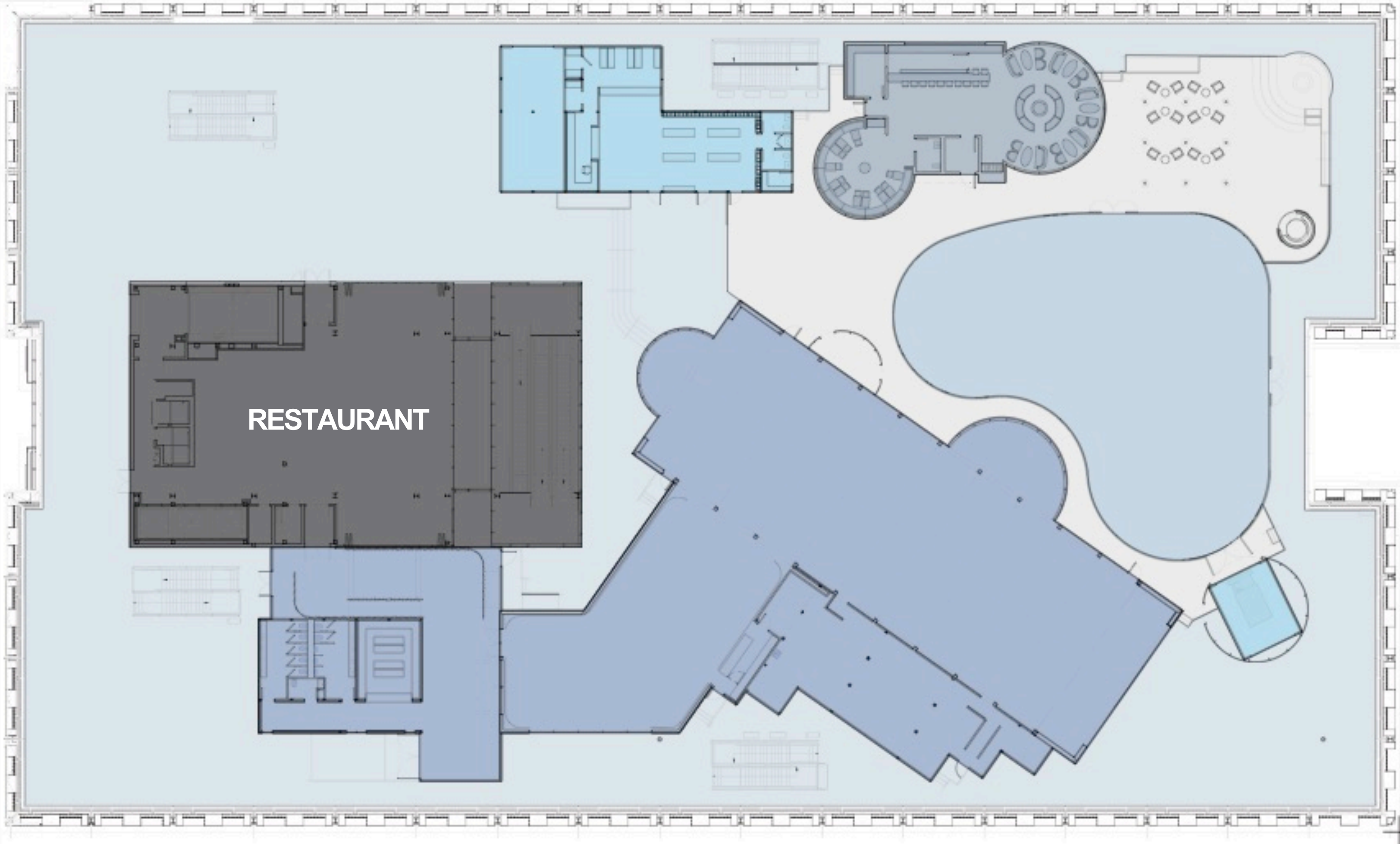
TED THEATER

TEMPORARY WINTER VILLAGE



WINTER VILLAGE ROOFTOP BUILD-OUT

- EXISTING OPEN ROOF**
56,000 SQFT
- ICE RINK**
5,454 SQFT
COVERAGE: 10%
- SKATE SHOP**
2,394 SQFT
COVERAGE: 4%
- WARMING HUT**
2,240 SQFT
COVERAGE: 4%
- DECK**
5,840 SQFT
COVERAGE: 10%
- MARKET / FLEX SPACE**
14,062 SQFT
COVERAGE: 25%
- TOTAL TEMPORARY POP-UP**
29,990 SQFT
COVERAGE: 53%
- TOTAL ENCLOSED**
18,696 SQFT
COVERAGE: 33%



INDUSTRY AT THE EAST RIVERS

HOW COMMERCE SHAPED A LANDSCAPE

SHIPPING



SOUTH STREET SEAPORT, 1901
(URL <http://www.shorpy.com/node/11511?size=_original>)

COMMERCE AND GOODS



FULTON FISH MARKET, 1936
(URL <<https://ny.curbed.com/2012/5/15/10371162>>)
FAIR FISH CO. AT THE FULTON FISH MARKET, 1957
(URL <<http://www.universal-seafood.com/aboutus.html>>)

ICE



CROSSING THE EAST RIVER ON THE ICE BRIDGE, 1871
(URL <<https://www.brownstoner.com/history/blizzard-1888-frozen-east-river-brooklyn/>>)

CELEBRATING HISTORY THROUGH MATERIALITY



BRONZE DETAILING

TEAK DECKING

COMMERCE

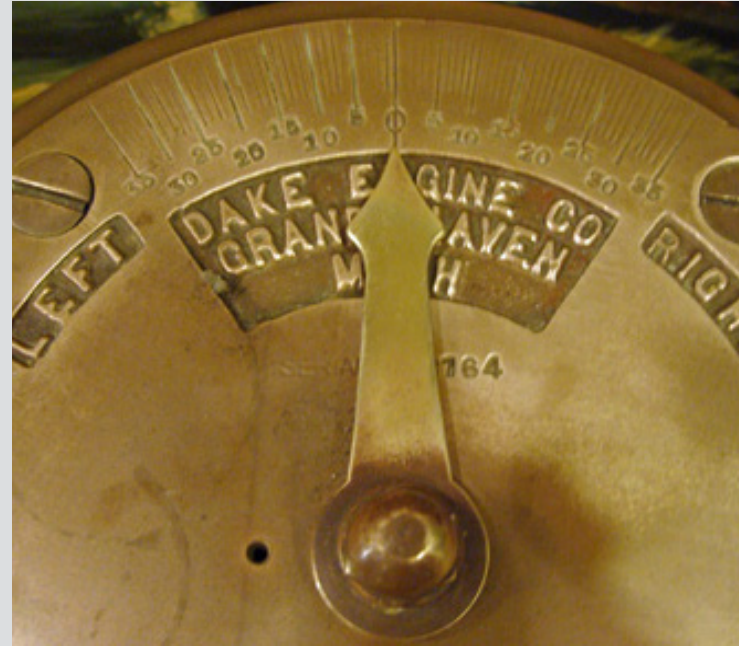
STORAGE

ICE

PIER 17

WINTER VILLAGE

MATERIAL PALLET



BRONZE



AGED WOOD



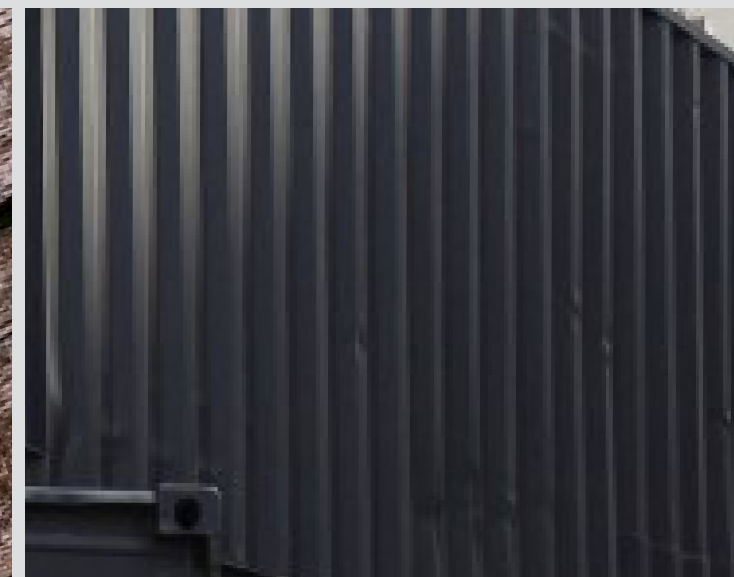
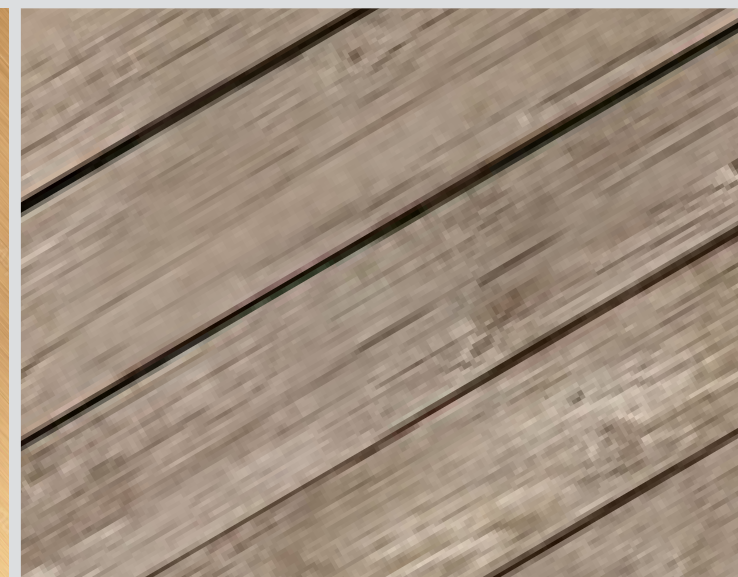
BARREL



CARGO



ICE



SEAPORT
DISTRICT NYC

ICE SKATING IN NEW YORK CITY

NEW YORK'S UNIQUE PASSION FOR ICE SKATING



SPEEDSKATING RACE AT CENTRAL PARK, 1928
(URL < <https://goo.gl/Kk83Qx>)



ROCKEFELLER CENTER

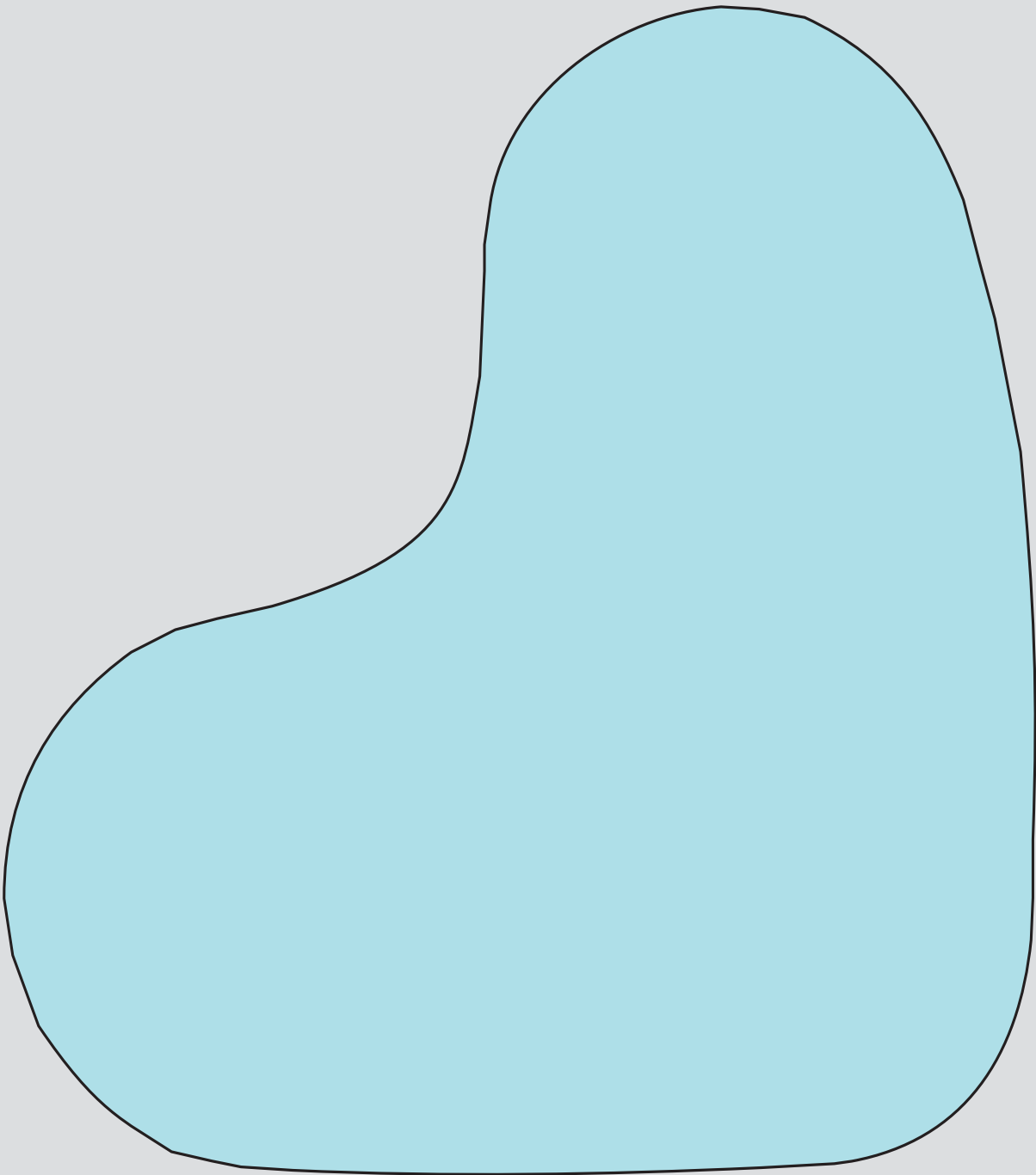


BRYANT PARK

SMALL SCALE ICE RINKS IN NEW YORK CITY



THE STANDARD HOTEL SKATING RINK
3,025 SQFT
55' X 55'

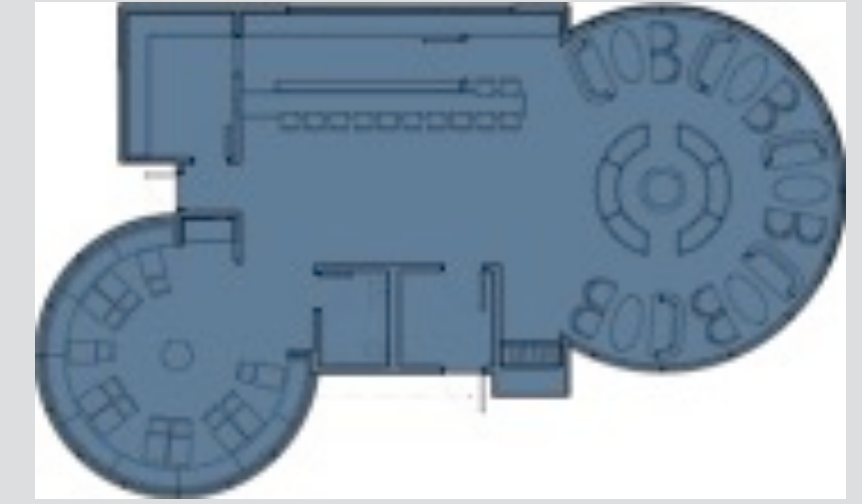


PIER 17 WINTER ROOFTOP SKATING RINK
5,455 SQFT
73' X 73'



ROCKEFELLER CENTER SKATING RINK
8,500 SQFT
85' X 100'

WINTER VILLAGE WARMING HUT (FOOD AND BAR)

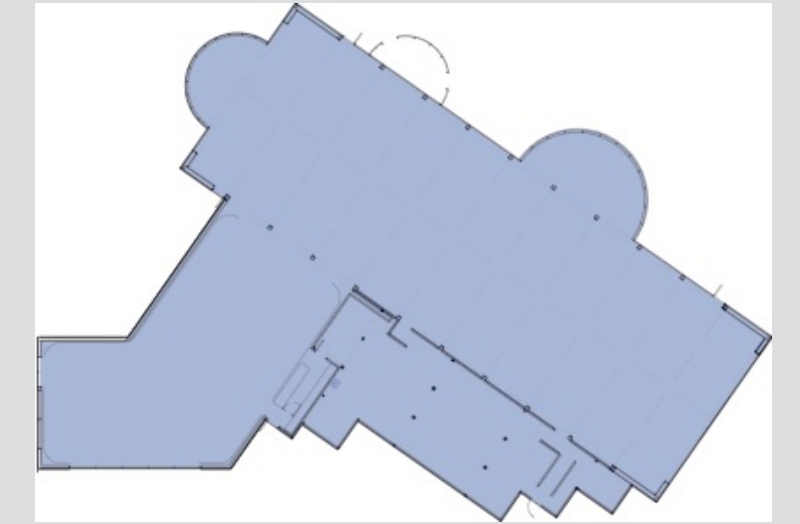


WINTER VILLAGE SKATING RINK



VISUALHOUSE

WINTER VILLAGE MARKET/FLEX SPACE



WINTER VILLAGE ROOFTOP STRUCTURE

HISTORIC DISTRICT



VIEW 1: WINTER VILLAGE: SOUTH STREET @ BEEKMAN STREET



VIEW 2: WINTER VILLAGE: SOUTH STREET @ FULTON SQUARE



VIEW 3: WINTER VILLAGE: SOUTH STREET @ PIER 15



VIEW 4: WINTER VILLAGE: JOHN STREET @ FRONT STREET



VIEW 5: WINTER VILLAGE: FULTON STREET @ FRONT STREET



VIEW 6: WINTER VILLAGE: BEEKMAN STREET @ FRONT STREET

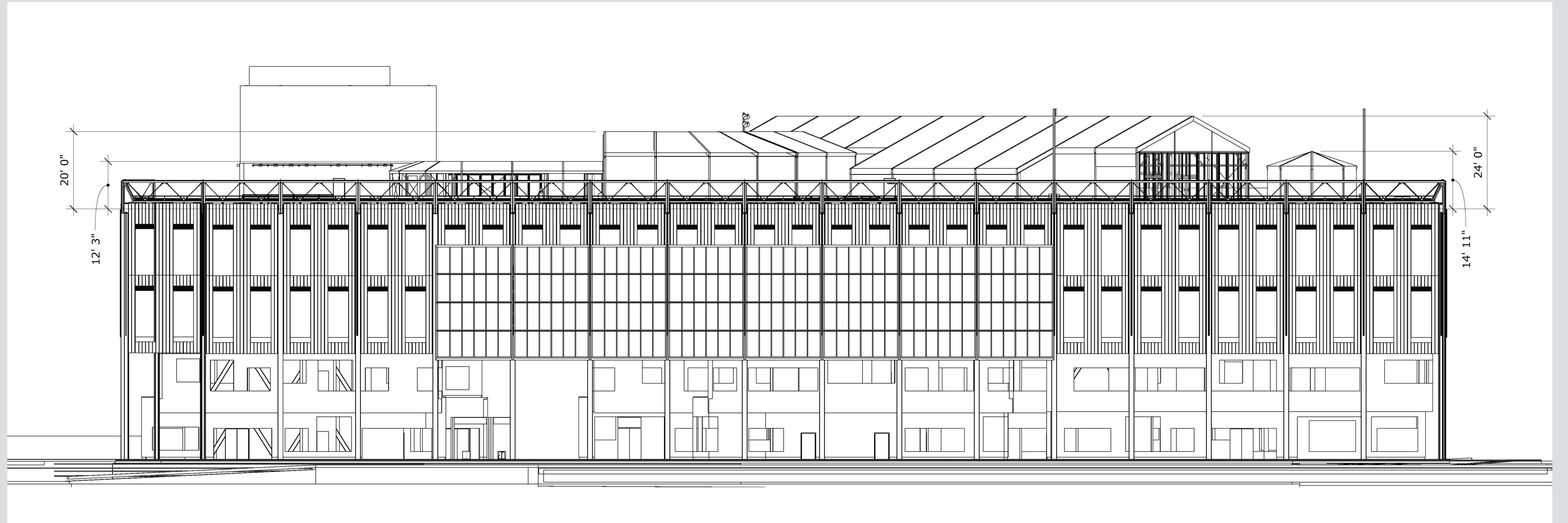


VIEW 7: WINTER VILLAGE: PECK SLIP @ FRONT STREET



PIER 17

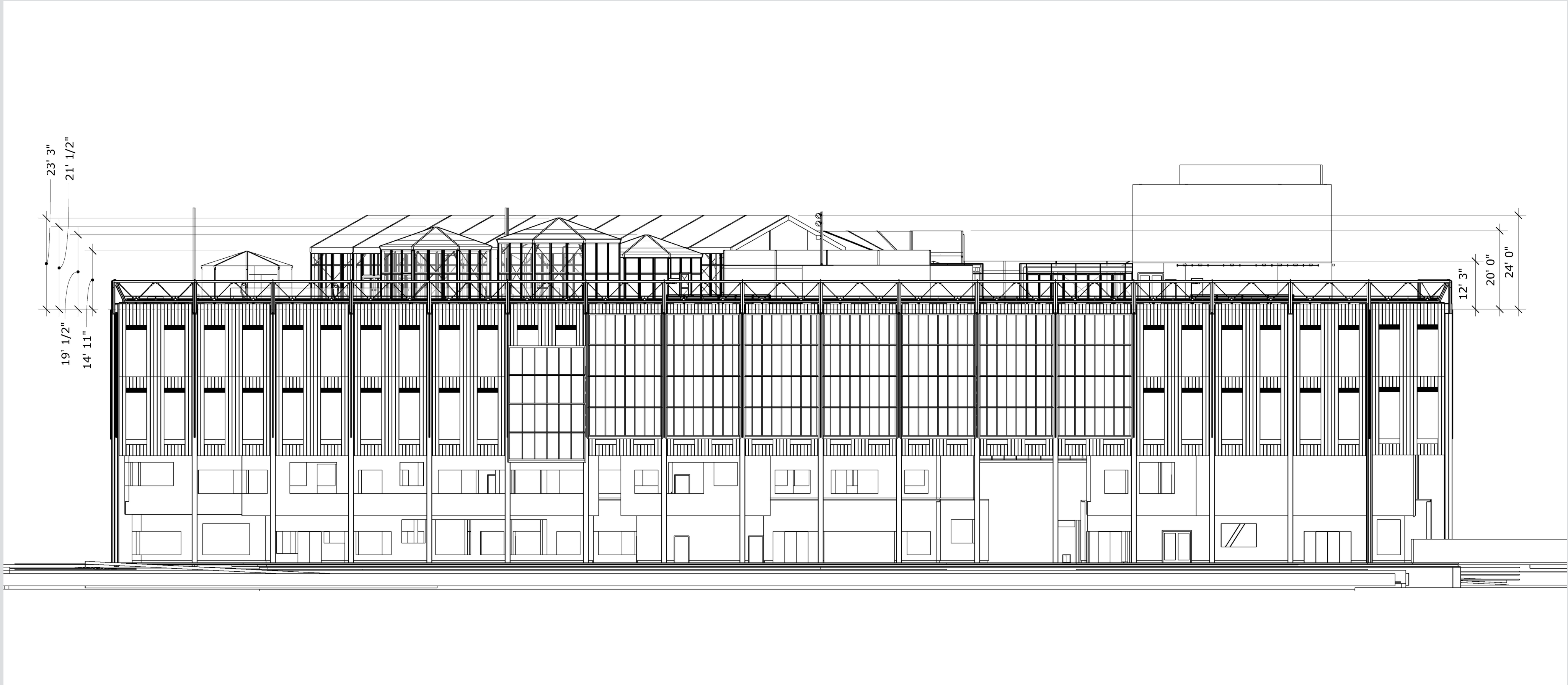
ELEVATION LOOKING NORTH



SEAPORT
DISTRICT NYC

PIER 17

ELEVATION LOOKING SOUTH



PIER 17

ELEVATION LOOKING EAST



PIER 17

ELEVATION LOOKING WEST

