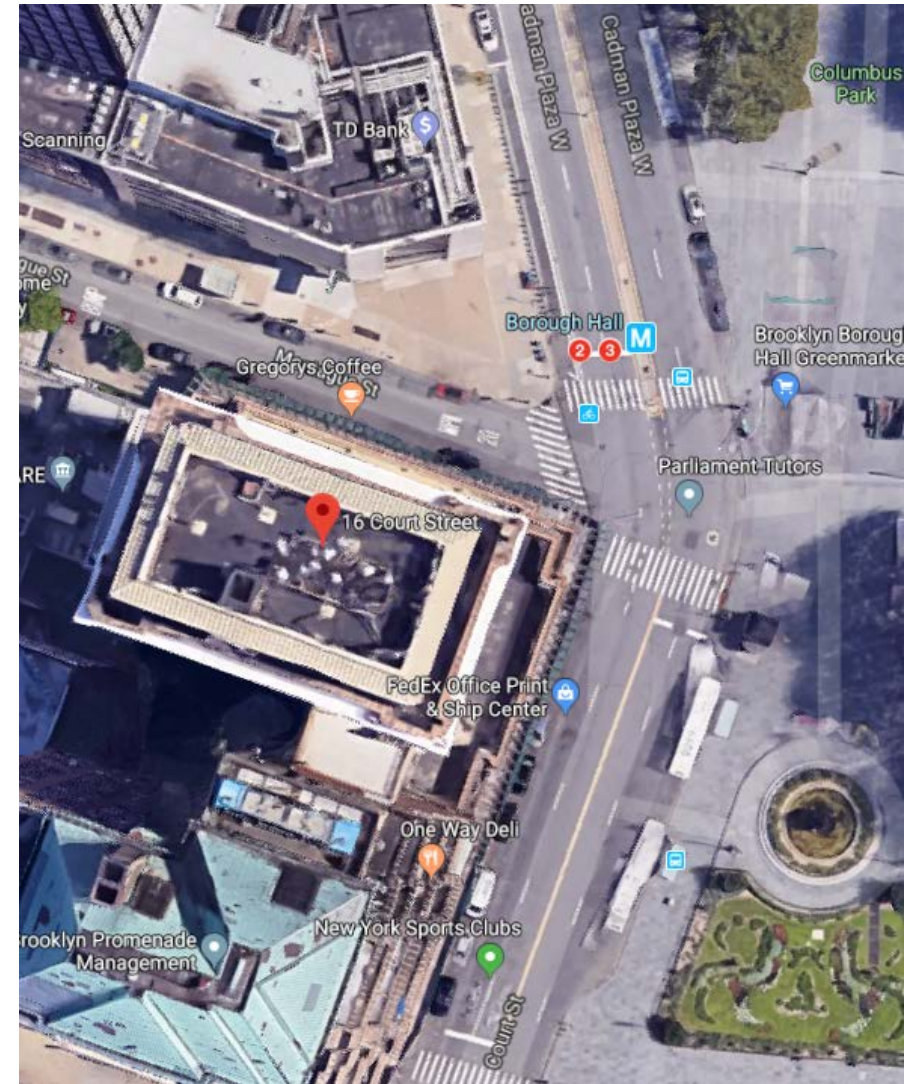




16 Court Street
Brooklyn, NY 11241

SCOPE: Proposed replacement of existing sign.



SIGN: E01 RR EXISTING SIGNAGE



Existing Sign
Description: SIGN CABINET W/Ple
Action: RR
Height:
Width:
Depth:
Letter Height:
Sq Ft:
Wall Material:
Illuminated:
Flush or Raceway
Mounted:
Double Faced:

PROPOSED SIGNAGE



Sign Type: Non-Illum Channel Let
Description:
Reface sign with new pin mounted channel letters
Height: 24"
Width: 13'-2"
Depth: 5"
Sq Ft:
Illuminated: No
Flush or Raceway
Mounted: Flush Mount
Maximum
Sq. Ft Allowed See Code Page



FedEx Office

SIGN: E02

RR

EXISTING SIGNAGE



Existing Sign
Description: ILLUMINATED BEACON

Action: RR

Height:

Width:

Depth:

Letter Height:

Sq Ft:

Wall Material:

Illuminated:

Flush or Raceway
Mounted:

Double Faced:

PROPOSED SIGNAGE



Sign Type: 24" Vinyl Beacon

Description:

24" Vinyl Beacon

Height: 24"

Width: 22"

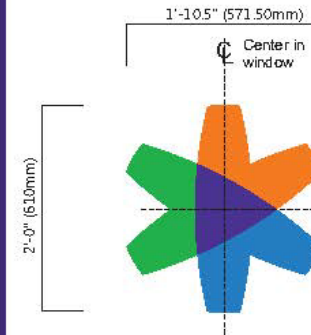
Depth:

Sq Ft:

Illuminated: No

Flush or Raceway
Mounted:

Maximum
Sq. Ft Allowed See Code Page



Window vinyl Beacon (24" h.)
Scale: 3/4" = 1'-0"

Window Vinyl Beacon

Window Vinyl Beacon General Specifications

Vinyl decoration is on first surface of glass, colors are:

1. 3M #148-9077 FedEx Purple

2. 3M #148-3134 FedEx Orange

3. 3M #148-5746 FedEx Green

4. 3M #148-7838 FedEx Blue

FedEx Office

16 Court Street
Brooklyn, NY 11241
SHEET 3 OF 10

SIGN: E03 RR EXISTING SIGNAGE

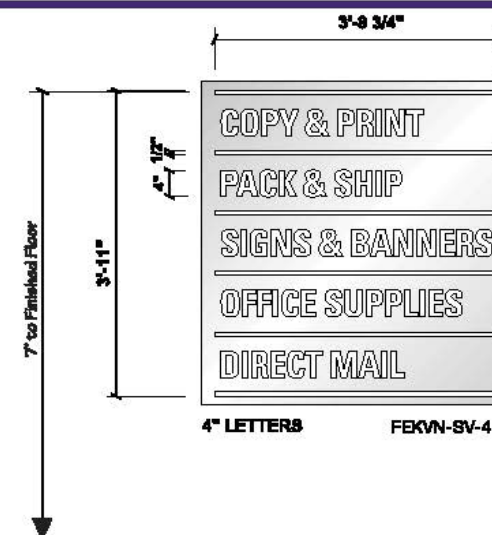


Existing Sign
Description: CSV
Action: RR
Height:
Width:
Depth:
Letter Height:
Sq Ft:
Wall Material:
Illuminated:
Flush or Raceway Mounted:
Double Faced:

PROPOSED SIGNAGE



Sign Type: FEKVN-CSV-4
Description:
4" Core Services Vinyl
Height: 3' 11"
Width: 3' 8 3/4"
Depth:
Sq Ft:
Illuminated: No
Flush or Raceway Mounted: N/A
Maximum Sq. Ft Allowed See Code Page



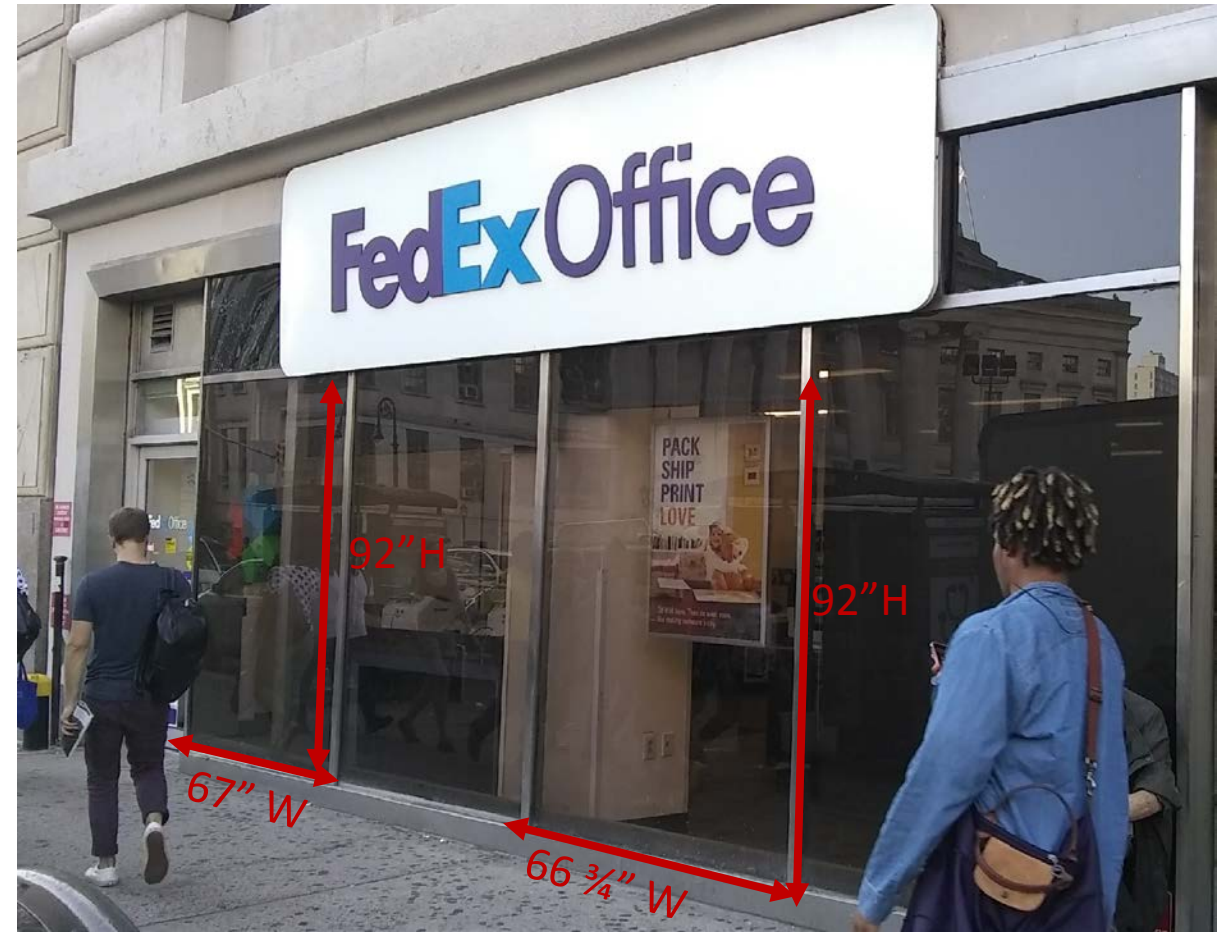
Storefront FedEx Office Service Listing

The service listing graphic integrates each service listing name as a single graphic to be applied to one window using surface applied white vinyl. If the Beacon is wall-mounted, the alternate service listing graphic is used in storefronts with fewer than five windows. If the Beacon is placed in one window, the alternate graphic is used in storefronts with fewer than six windows.

- The letter height is 4".
- The lines are 3'-8.75" long, to fit within the window area.
- The top of the uppermost line is at 7'-0" above the sidewalk.
- The entire stacked service listing graphic is centered in the window.
- Vinyl decoration is on first surface of glass, color is 3M #180-0511 FedEx White.

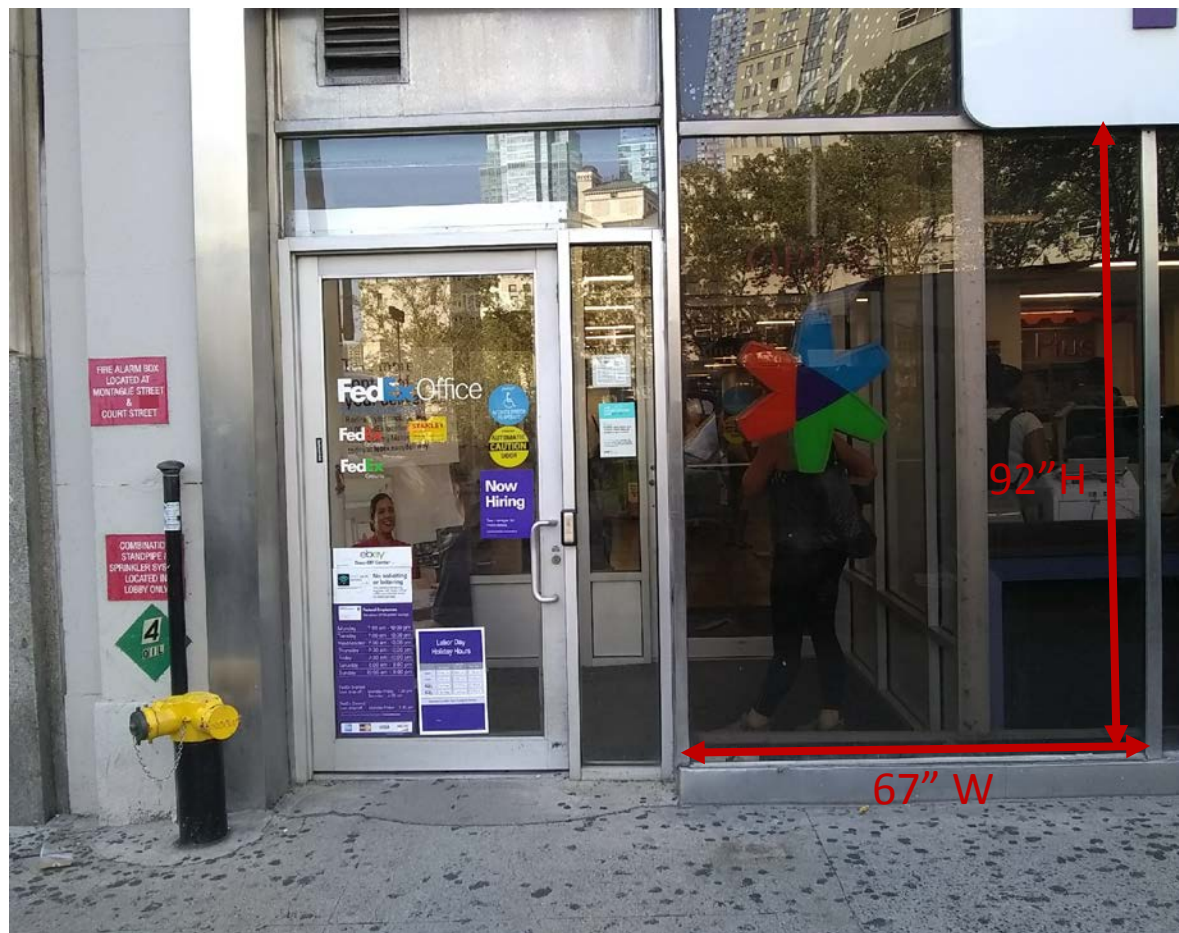
Note: Full-size artwork is available from FedEx Services Global Brand Management. If the window width is less than 3'-8", the service listing graphic can be proportionally scaled down in size. Vendor can scale artwork appropriately for site conditions and submit to FedEx Services Global Brand Management team for approval. See Section 9 for contact information.

FedEx Office



FedEx Office

16 Court Street
Brooklyn, NY 11241
SHEET 5 OF 10



FedEx Office

16 Court Street
Brooklyn, NY 11241
SHEET 6 OF 10



FedEx Office

16 Court Street
Brooklyn, NY 11241
SHEET 7 OF 10



FedEx Office

16 Court Street
Brooklyn, NY 11241
SHEET 8 OF 10



FedEx Office

16 Court Street
Brooklyn, NY 11241
SHEET 9 OF 10



FedEx Office

16 Court Street
Brooklyn, NY 11241
SHEET 10 OF 10