



1 415 WASHINGTON WHEELCHAIR STAIR LIFT



415 WASHINGTON AVE.
BROOKLYN, NY 11238





AKELIUS REAL ESTATE MANAGEMENT LLC
110 WILLIAM STREET SUITE 1810
NEW YORK, NY 10038

DATE	SUBMISSION #/TYPE



SCALE

A-001



68'-4" ROOF

11'-8"

57'-8" LEVEL 6

10'-10"

48'-10" LEVEL 5

10'-10"

36'-0" LEVEL 4

10'-10"

25'-2" LEVEL 3

10'-10"

14'-4" LEVEL 2

11'-10"

2'-6" LEVEL 1

0'-0" SIDEWALK

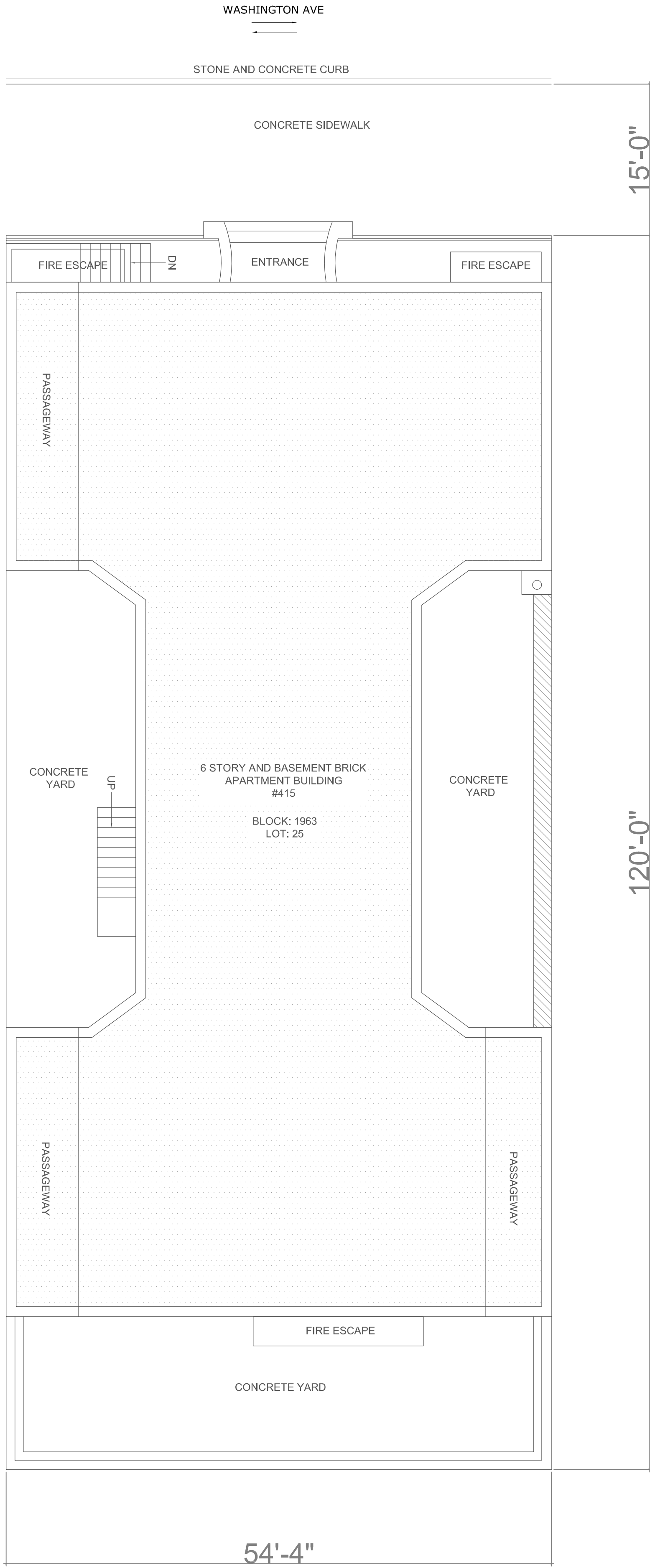
5'-4" CELLAR

75'

WORK AREA

1 EXISTING WEST ELEVATION

1/4" = 1'-0"



FIRE ESCAPE

ND

ENTRANCE

FIRE ESCAPE

PASSAGEWAY

CONCRETE YARD

Up

6 STORY AND BASEMENT BRICK
APARTMENT BUILDING
#415

BLOCK: 1963
LOT: 25

CONCRETE YARD

PASSAGEWAY

FIRE ESCAPE

CONCRETE YARD

54'-4"

15'-0"

120'-0"

WASHINGTON AVE

STONE AND CONCRETE CURB

CONCRETE SIDEWALK



415 WASHINGTON AVE.

BROOKLYN, NY 11238

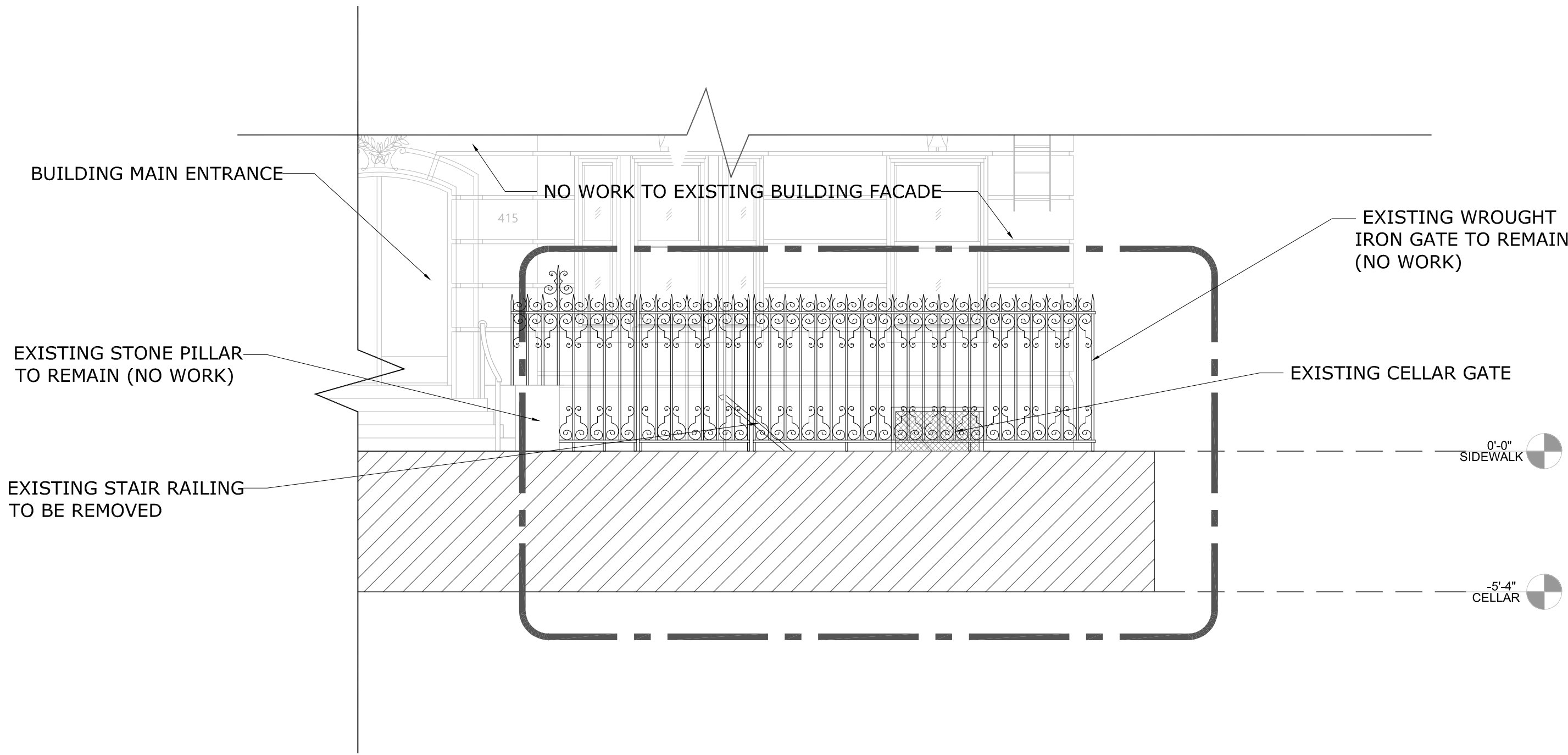
Akelius

AKELIUS REAL ESTATE MANAGEMENT LLC
110 WILLIAM STREET SUITE 1810
NEW YORK, NY 10038

DATE	SUBMISSION #/TYPE

SCALE

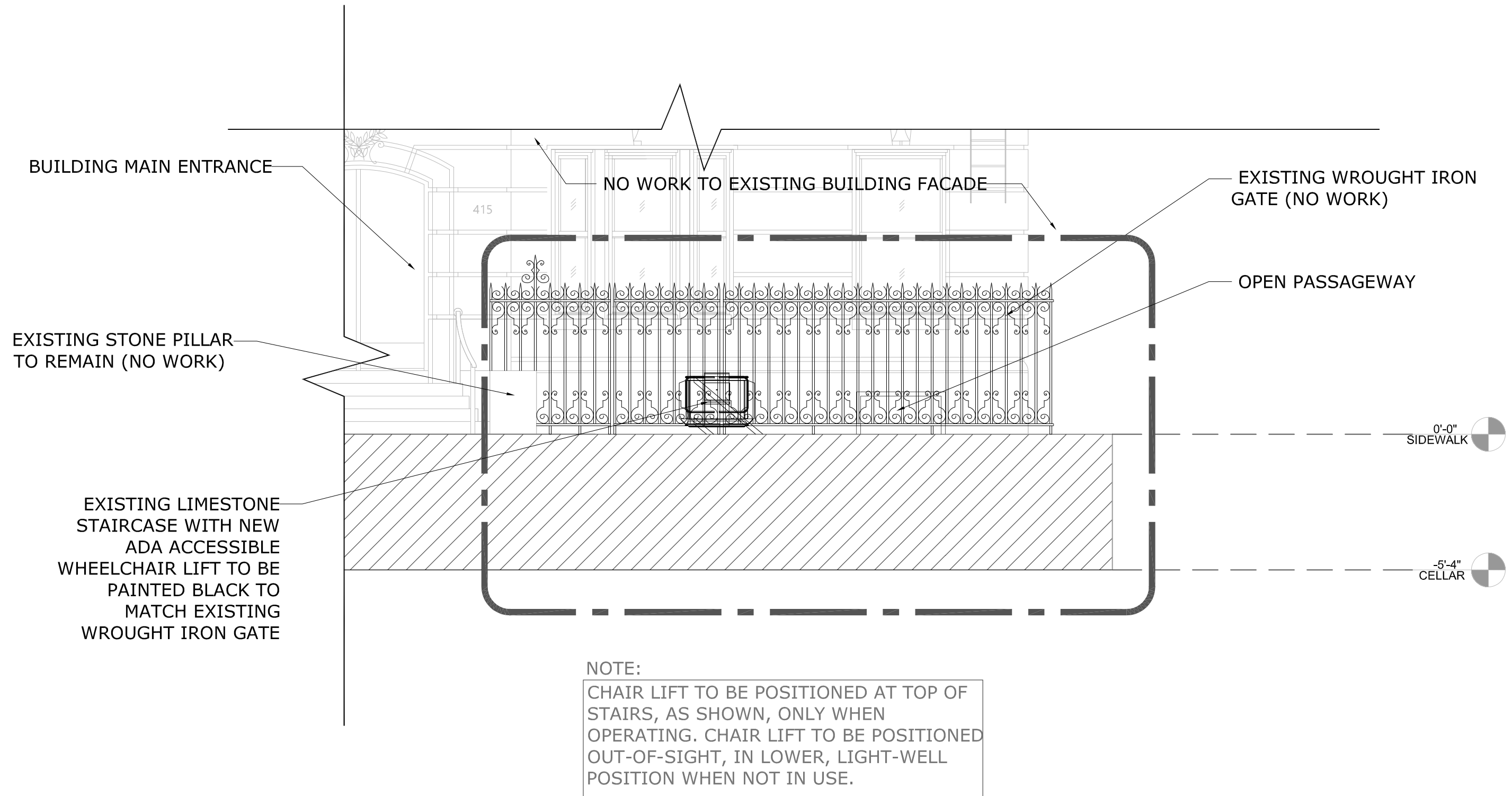
A-002



1

EXISTING PARTIAL WEST ELEVATION

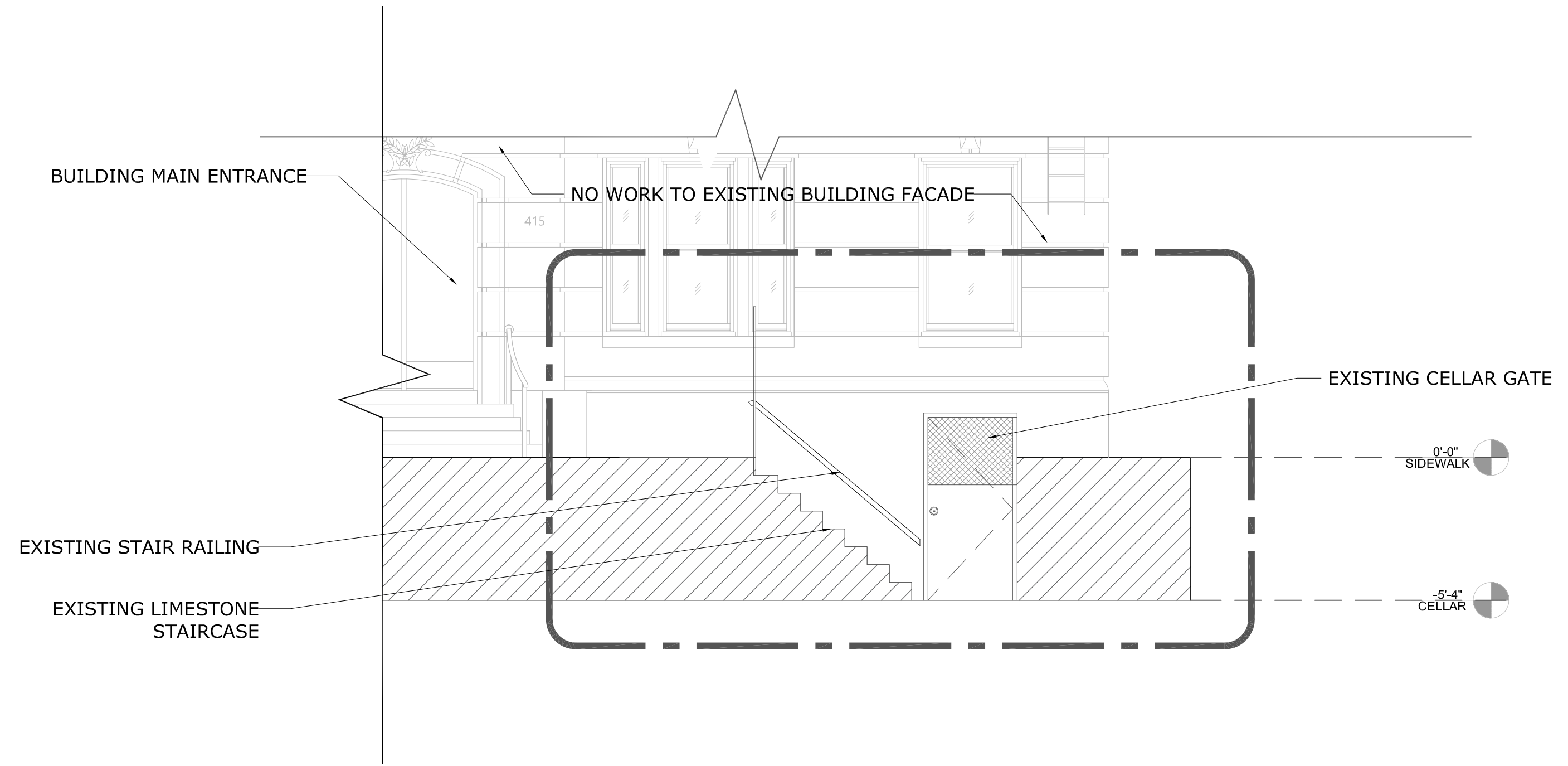
1/4" = 1'-0"



3

PROPOSED PARTIAL WEST ELEVATION

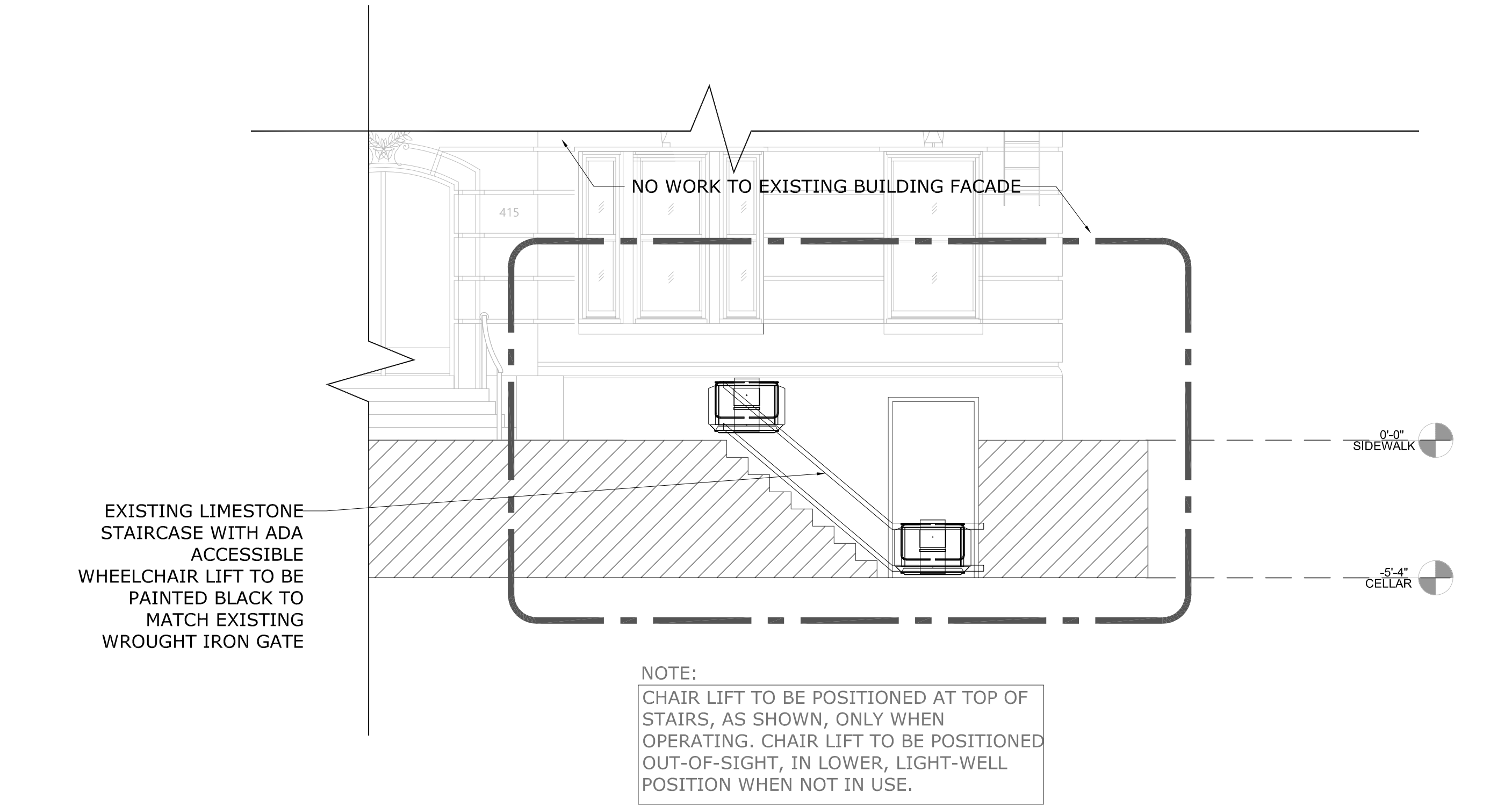
1/4" = 1'-0"



2

EXISTING PARTIAL WEST ELEVATION

1/4" = 1'-0"



4

PROPOSED PARTIAL WEST ELEVATION

1/4" = 1'-0"



415 WASHINGTON AVE.

BROOKLYN, NY 11238

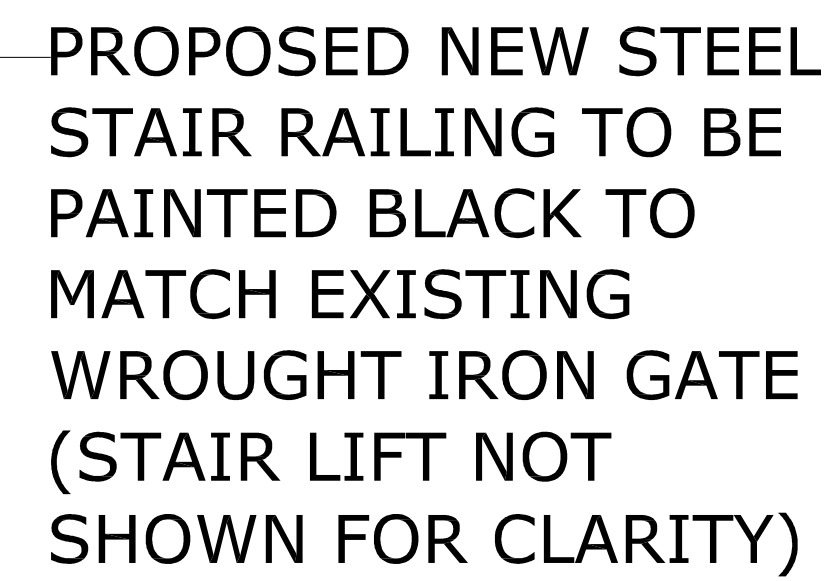
Akelius

AKELIUS REAL ESTATE MANAGEMENT LLC
110 WILLIAM STREET SUITE 1810
NEW YORK, NY 10038

DATE	SUBMISSION #/TYPE

SCALE

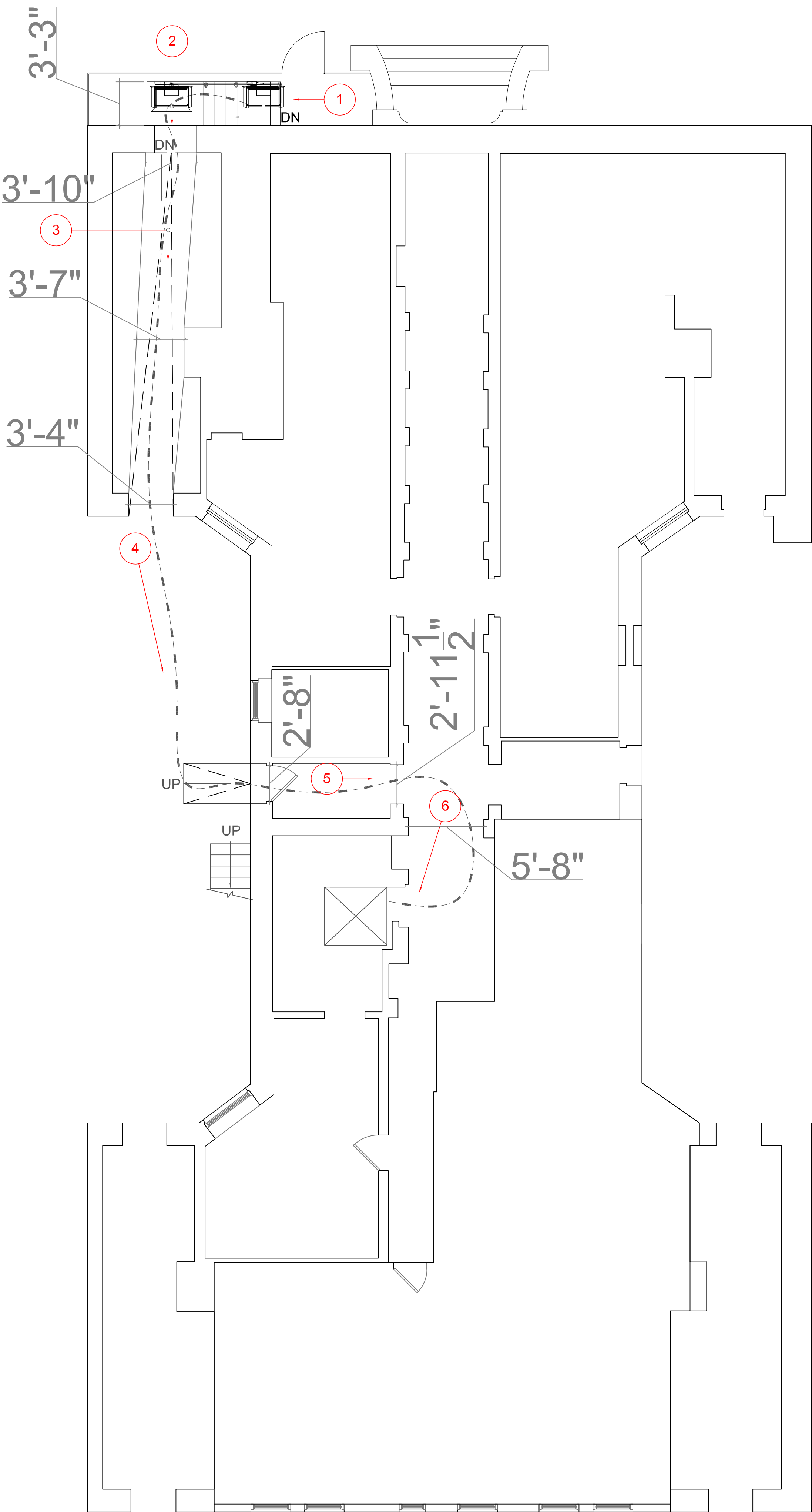
A-004


$$1/2'' = 1'-0''$$

CHAIR LIFT TO BE POSITIONED AT TOP OF STAIRS, AS SHOWN, ONLY WHEN OPERATING. CHAIR LIFT TO BE POSITIONED OUT-OF-SIGHT, IN LOWER, LIGHT-WELL POSITION WHEN NOT IN USE.


$$1/2'' = 1'-0''$$

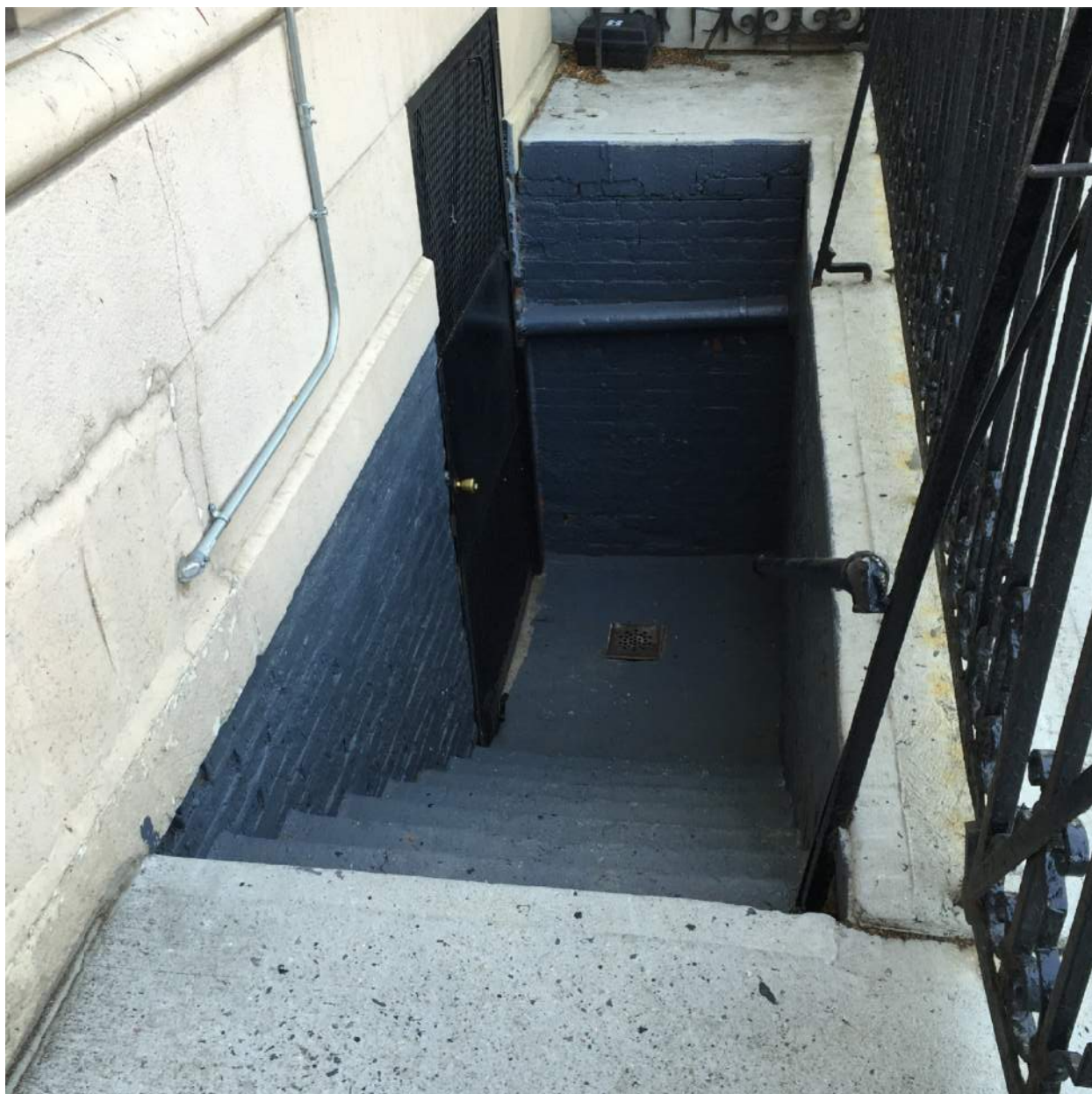

WASHINGTON AVE



1

PROPOSED STAIR LIFT CONSTRUCTION

1/2" = 1'-0"



1

LIGHTWELL VIEW FROM STREET



2

CELLAR VIEW FROM LIGHTWELL



3

CELLAR PASSAGEWAY



4

OUTDOOR COURTYARD



5

COURTYARD ENTRANCE TO BUILDING



6

ELEVATOR



415 WASHINGTON AVE.

BROOKLYN, NY 11238

Akelius

AKELIUS REAL ESTATE MANAGEMENT LLC
110 WILLIAM STREET SUITE 1810
NEW YORK, NY 10038

DATE	SUBMISSION #/TYPE

SCALE

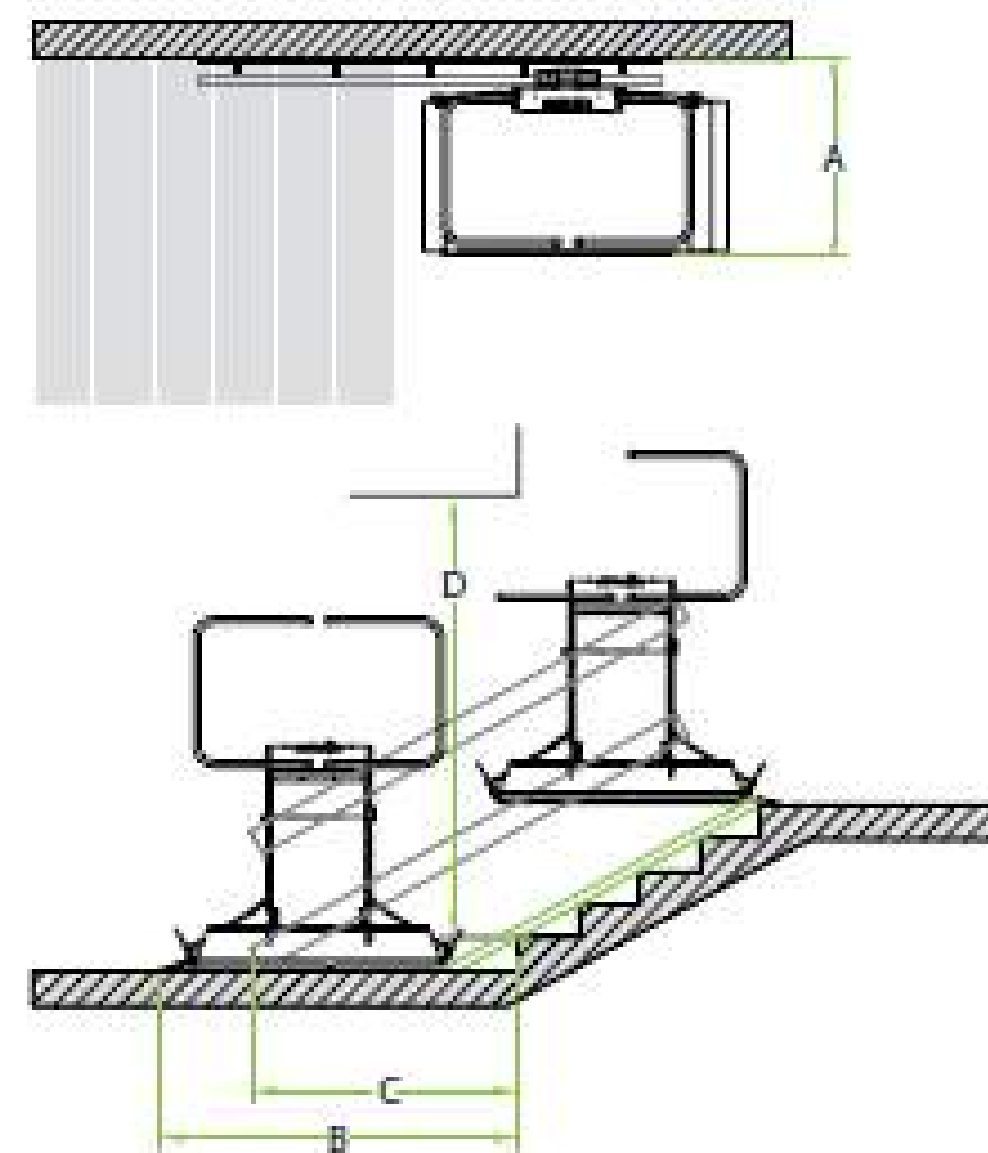
A-006

Savaria® Delta Inclined Platform Lift

ACCESS OVER STRAIGHT STAIRS



- Folds up compactly (18"/45.7 cm) from the wall when not in use allowing easy access to the stairs
- Durable construction and reliable components to stand up to day-to-day use even in commercial settings
- Easy installation, often without major construction requirements
- Configure for straight through access or 90° entry/exit with a variety of standard platform sizes available
- Battery operation with top and bottom landing charging stations
- Pendant control with constant pressure operation, keyed for security
- Safety features include edge and underpan obstruction sensors, overspeed safety brake, safety arms, platform ramps, emergency stop button, limit switches, manual operation (using handwheel), lockable master power switch
- Optional features: automatic folding/unfolding for platform and arms, public building package, folding seat



SPECIFICATIONS

Applications	Residential, commercial, indoor
Stair types	Straight, single flight with constant gradient
Capacity	550 lb (250 kg), optional 660 lb (300 kg) USA only
Travel distance	8" (20 cm) to 40' (12 m) residential 8" (20 cm) to 80' (24 m) commercial
Finish Color	Light gray (RAL 7035)
Nominal speed	20 ft/min (0.10 m/s)
Motor	0.66 hp (0.5 kW)
Power	24V DC (battery system); 120V AC for charger
Warranty	36 months parts, ask dealer for details

Outdoor applications are limited by your specific climate conditions, consult with your local dealer

CLEARANCES

Platform size	28.4" x 35.5" (720 x 900 mm)	27" x 36" (685 x 914 mm)	28.5" x 44" (724 x 1118 mm)	30.5" x 49.3" (775 x 1250 mm)
Unfolded width (A)	37.8" (959 mm)	36.4" (923 mm)	38" (966 mm)	40" (1017 mm)
Bottom landing (B)*	60.2"-54.4" (1530-1381 mm)	60.8"-54.9" (1544-1395 mm)	68.8"-62.9" (1747-1598 mm)	74"-68.1" (1880-1731 mm)
End of rail (C)*	44.9"-38.2" (1140-971 mm)	45.2"-38.5" (1147-978 mm)	49.2"-42.5" (1249-1080 mm)	51.8"-45.1" (1315-1146 mm)
Overhead (D)*	80.8"-94.6" (2053-2402 mm)	81.1"-95" (2059-2413 mm)	84.8"-101.6" (2153-2580 mm)	87.2"-106" (2215-2692 mm)

Values given for straight through entrance, see planning guide for 90° entrance which requires additional clearance. For post-mounted units add 3.5" to the unfolded platform width. *Clearances range based on stair angle, values are stated for 25° to 40°, see planning guide for complete details.

Authorized Savaria Dealer:



www.savaria.com

2 Walker Drive, Brampton, ON L6T 5E1 Canada

tel: 800.661.5112 fax: 905.791.2222



415 WASHINGTON AVE.
BROOKLYN, NY 11238

Akelius

AKELIUS REAL ESTATE MANAGEMENT LLC
110 WILLIAM STREET SUITE 1810
NEW YORK, NY 10038

DATE	SUBMISSION #/TYPE

SCALE

A-007