

309 West 85 Street, New York, NY 10024

**THE ORIGINAL WINDOW CONFIGURATION SHOWN
IN THE PHOTOGRAPH FROM THE ARCHIVES OF
LANDMARKS PRESERVATION COMMISSION SHOW
ELONGATED WINDOWS WITH A DECORATIVE BALCONY
AT THE SECOND FLOOR.**



Archive # 1247-126

309 West 85 Street, New York, NY 10024

**THE NEXT PHOTO FROM THE PERIOD OF THE
LANDMARKS DESIGNATION IN 2012 SHOWS A
RADICALLY ALTERED SECOND FLOOR WINDOW
CONFIGURATION-MUCH SMALLER AND WITH THE
DECORATIVE BALCONY REMOVED.**



309 West 85 Street, New York, NY 10024

THE CURRENT COLOR PHOTOGRAPH SHOWS A VIEW SIMILAR TO THE 2012 DESIGNATION ERA PHOTOGRAPH REGARDING THE SECOND FLOOR WINDOWS. THE 8 OVER 8 WINDOW PANE CONFIGURATION REMAINS, AND THE OWNER IS WILLING TO REPLACE THE INTERIOR WINDOW MUNTINS WITH EXTERIOR MUNTINS.



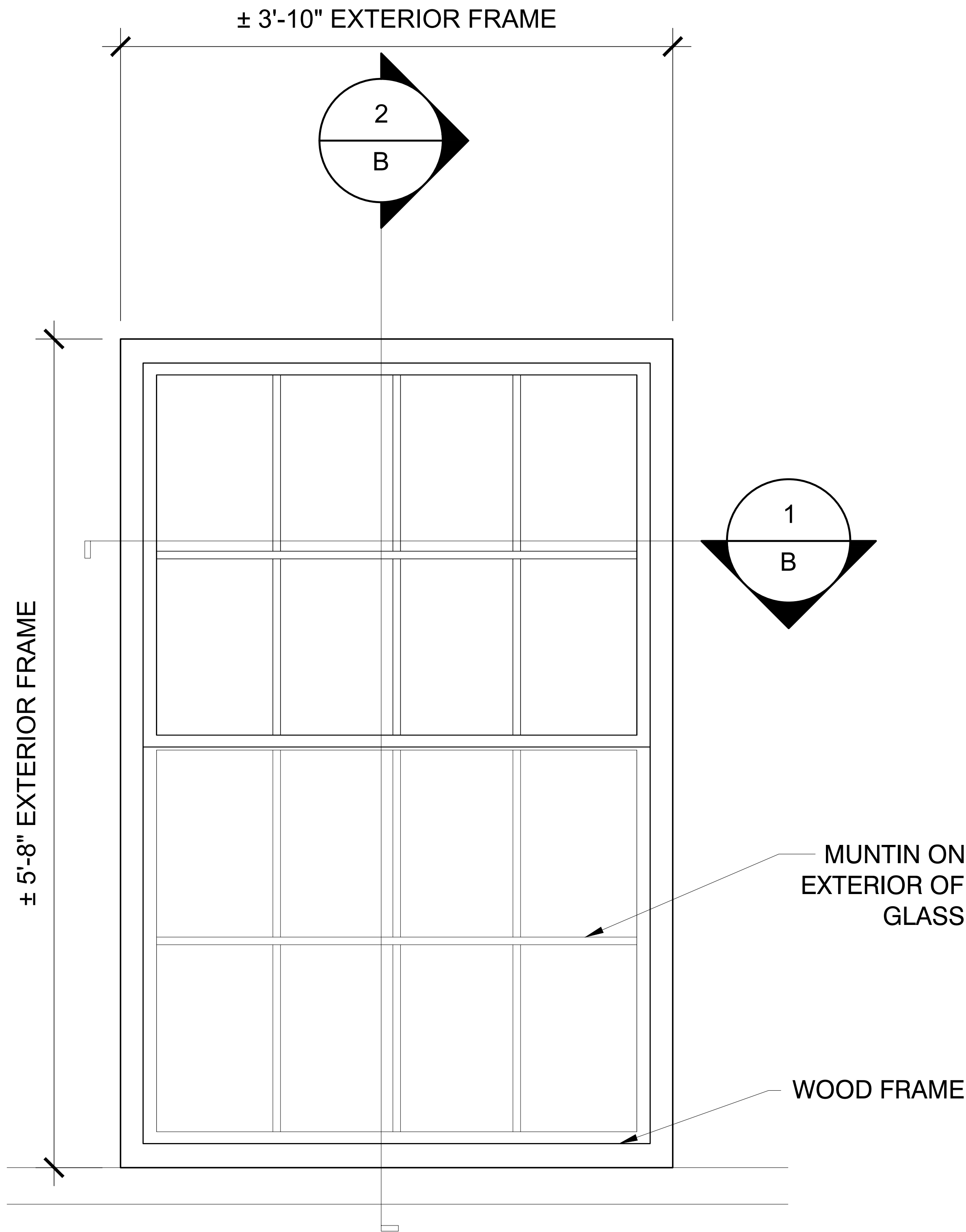
309 West 85 Street, New York, NY 10024

**FULL COLOR VIEW OF STREET FAÇADE WITH NEWLY
INSTALLED ALUMINUM WINDOWS.**

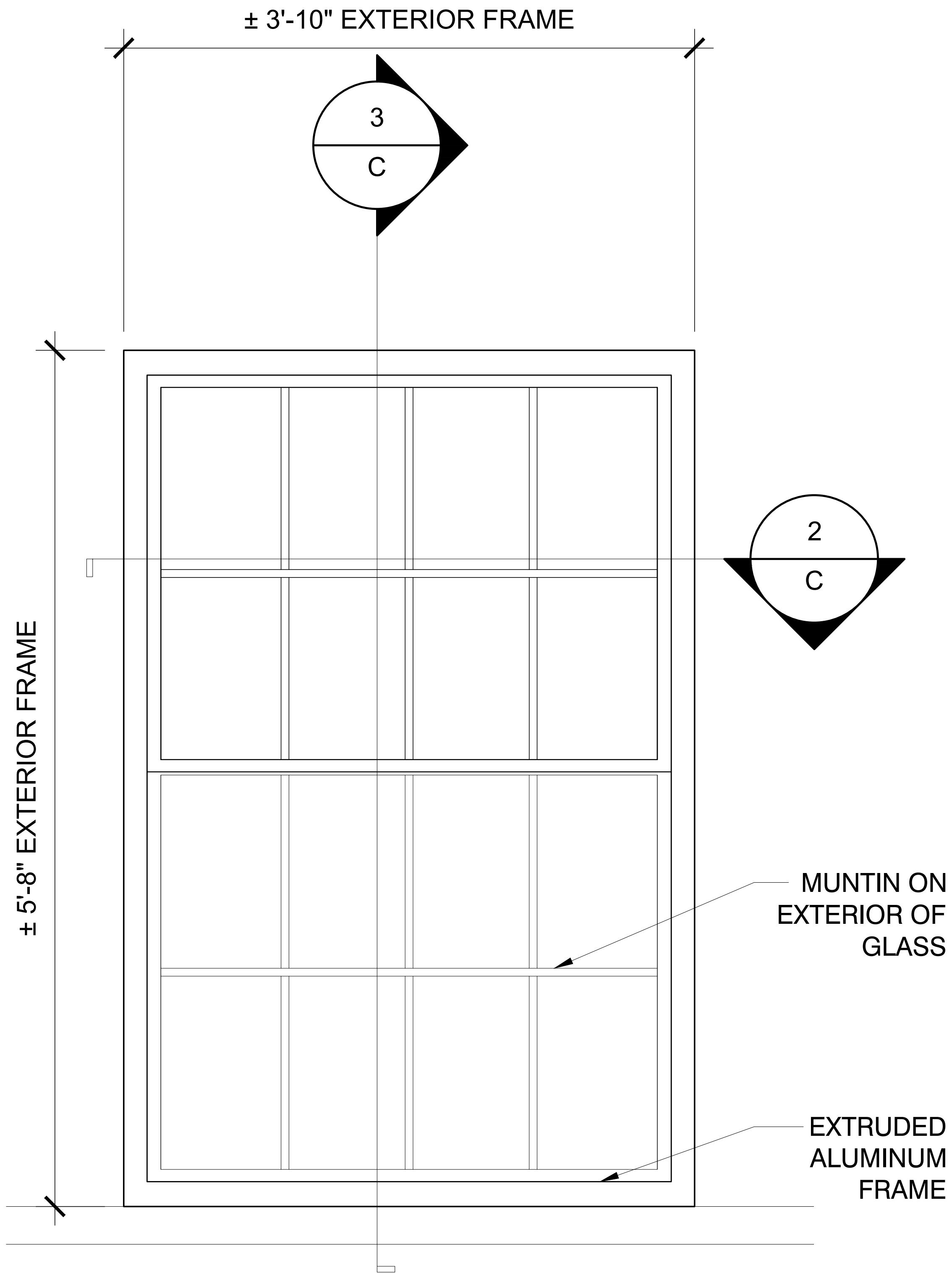


309 West 85 Street, New York, NY 10024

SHEET A



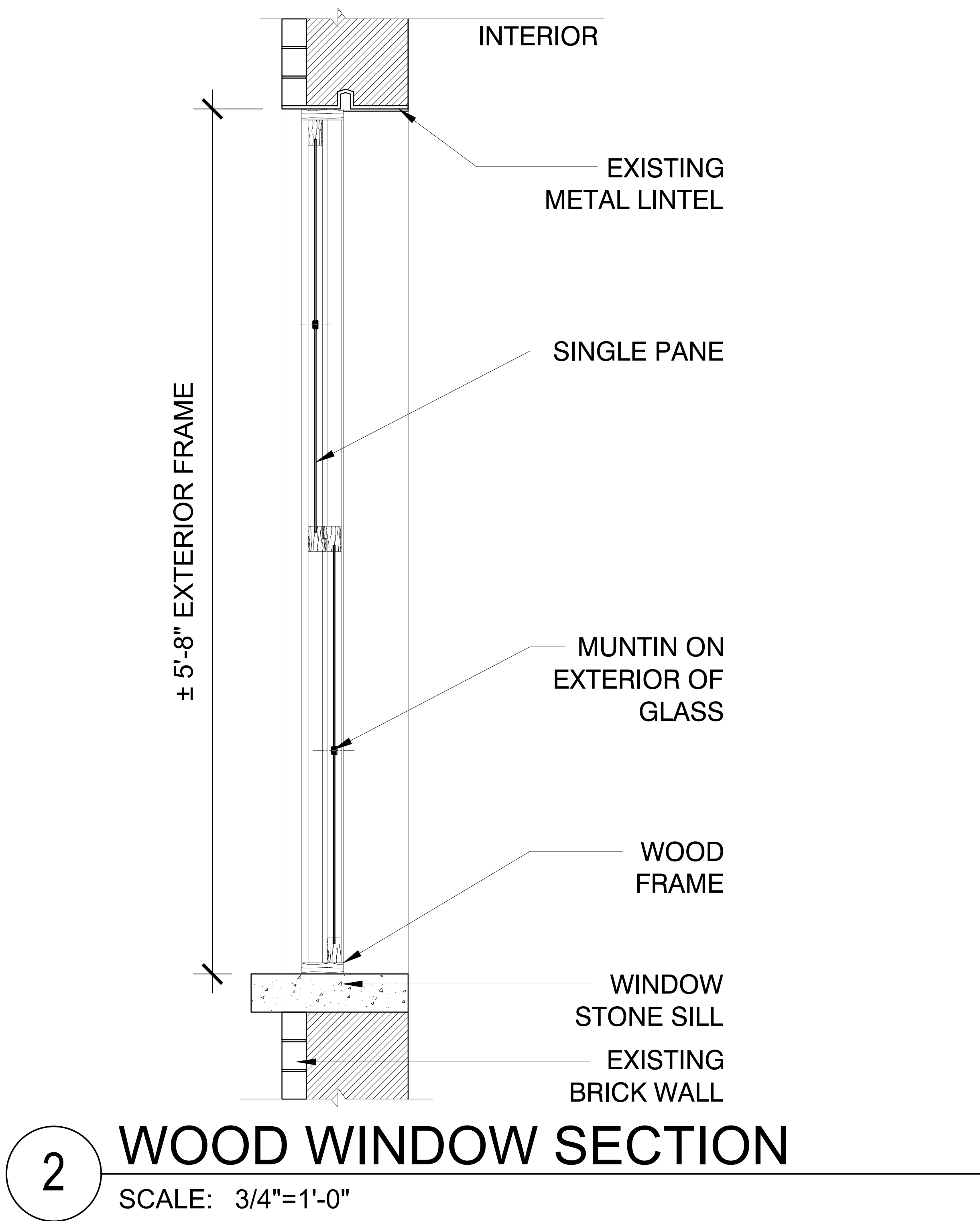
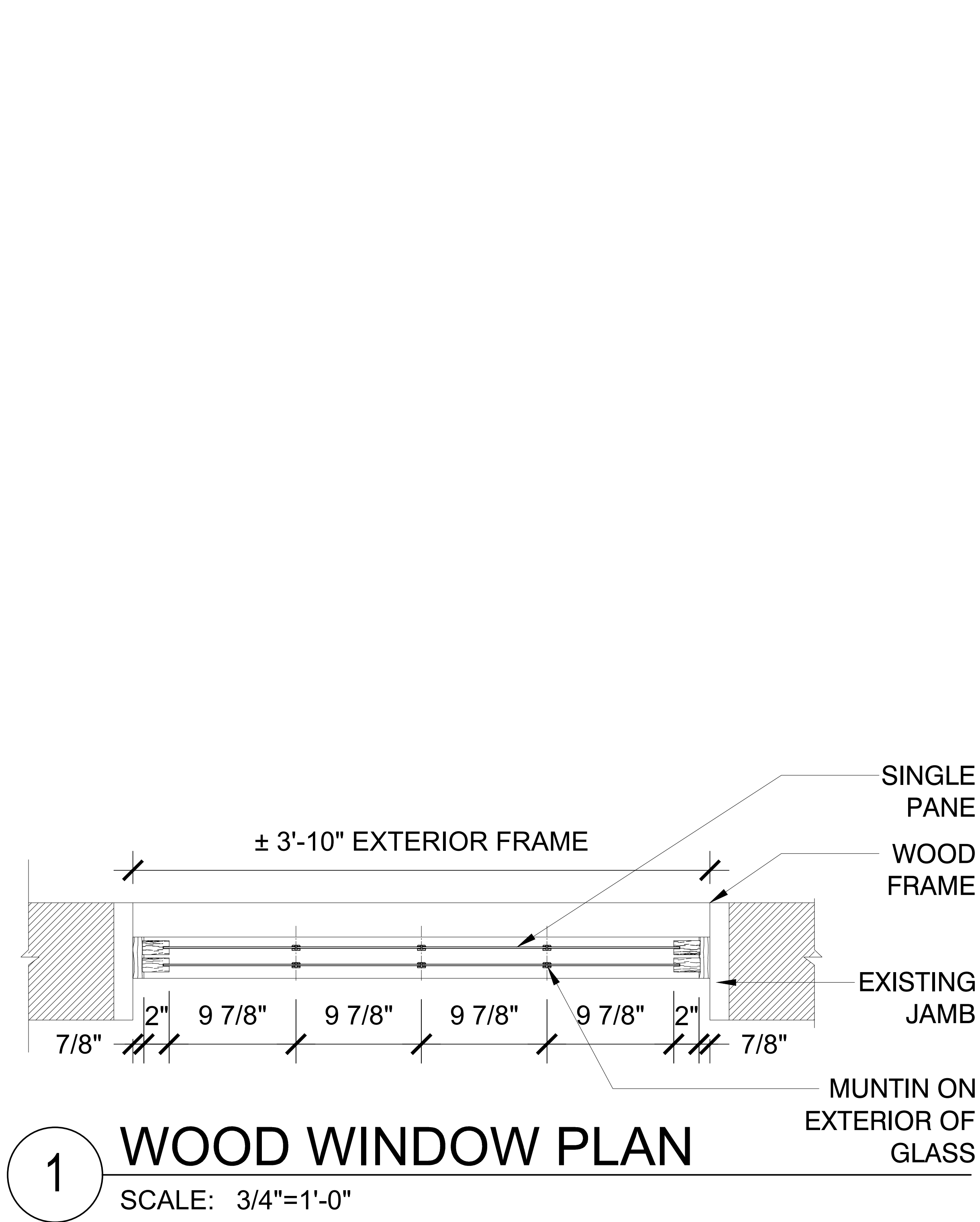
1 WOOD WINDOW ELEVATION
SCALE: 3/4"=1'-0"



2 PROPOSED WINDOW ELEVATION
SCALE: 3/4"=1'-0"

309 West 85 Street, New York, NY 10024

SHEET B

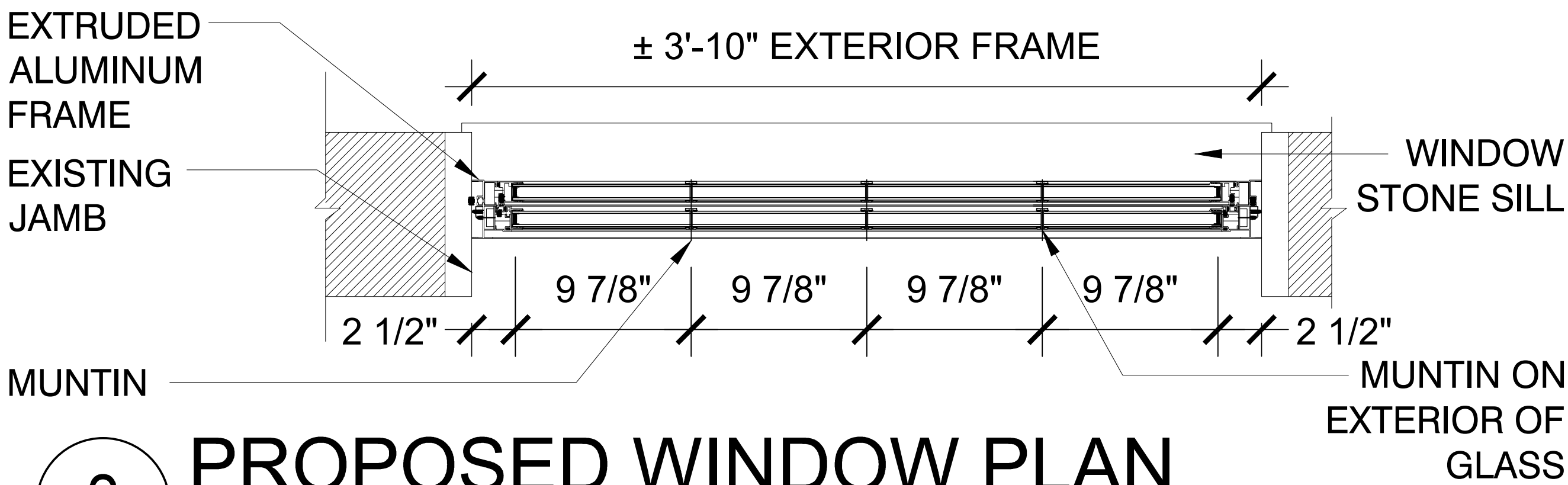


309 West 85 Street, New York, NY 10024

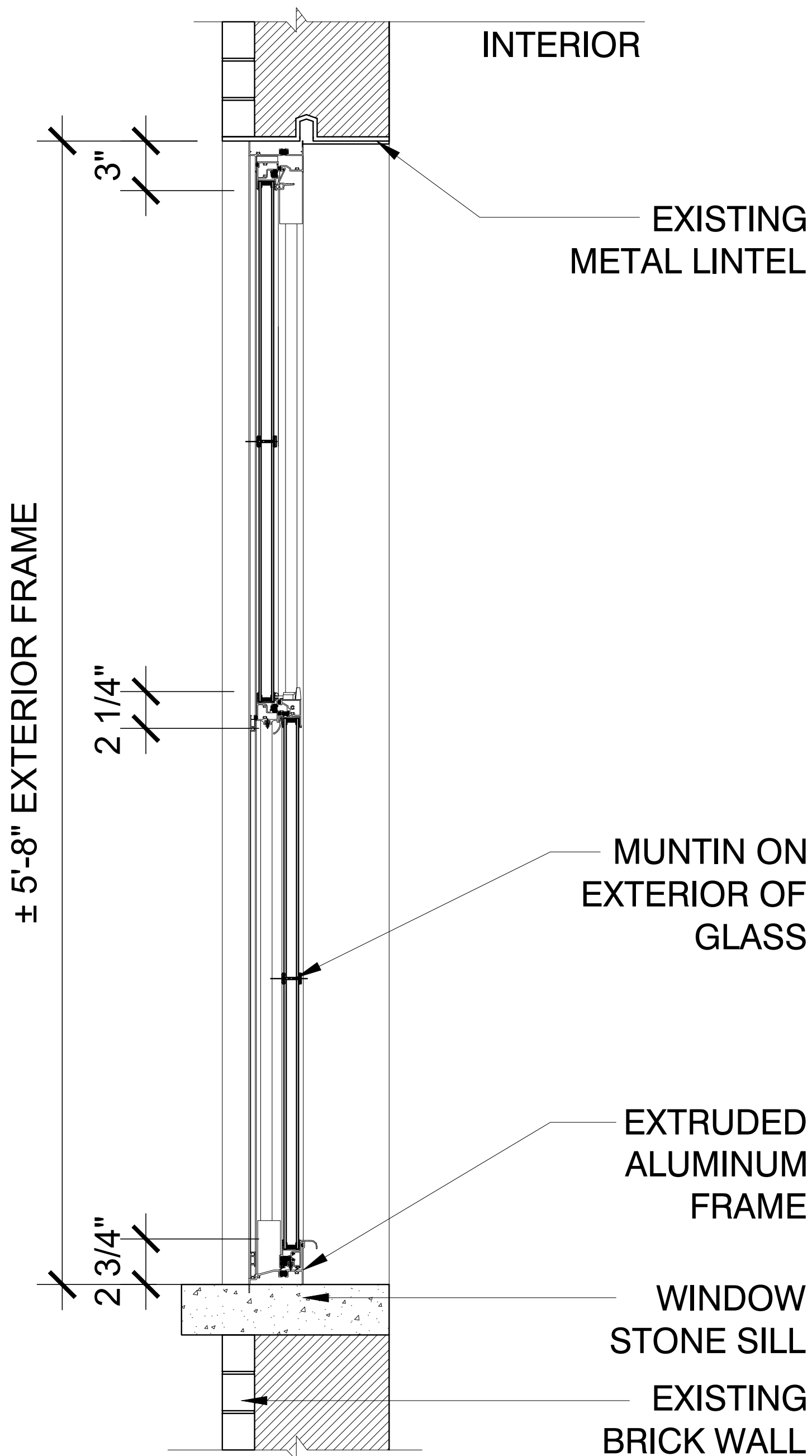
SHEET C



1 PHOTO DETAIL @ PROPOSED WINDOW
SCALE: N.T.S.



2 PROPOSED WINDOW PLAN
SCALE: 3/4"=1'-0"



3 PROPOSED WINDOW SECTION
SCALE: 3/4"=1'-0"