

The current proposal is:

Preservation Department – Item 3, LPC-20-04101

**5 Hampton Place – Crown Heights North II Historic District,
Borough of Brooklyn**

How to Testify Via Zoom:

<https://us02web.zoom.us/j/87295131867?pwd=UFpLRGxVNy90eDVBNGgvUE9NMkhwQT09>

Webinar ID: 872 9513 1867

Password: 866444

By Phone: 1 646-558-8656

US (New York) 877-853-5257 (Toll free)

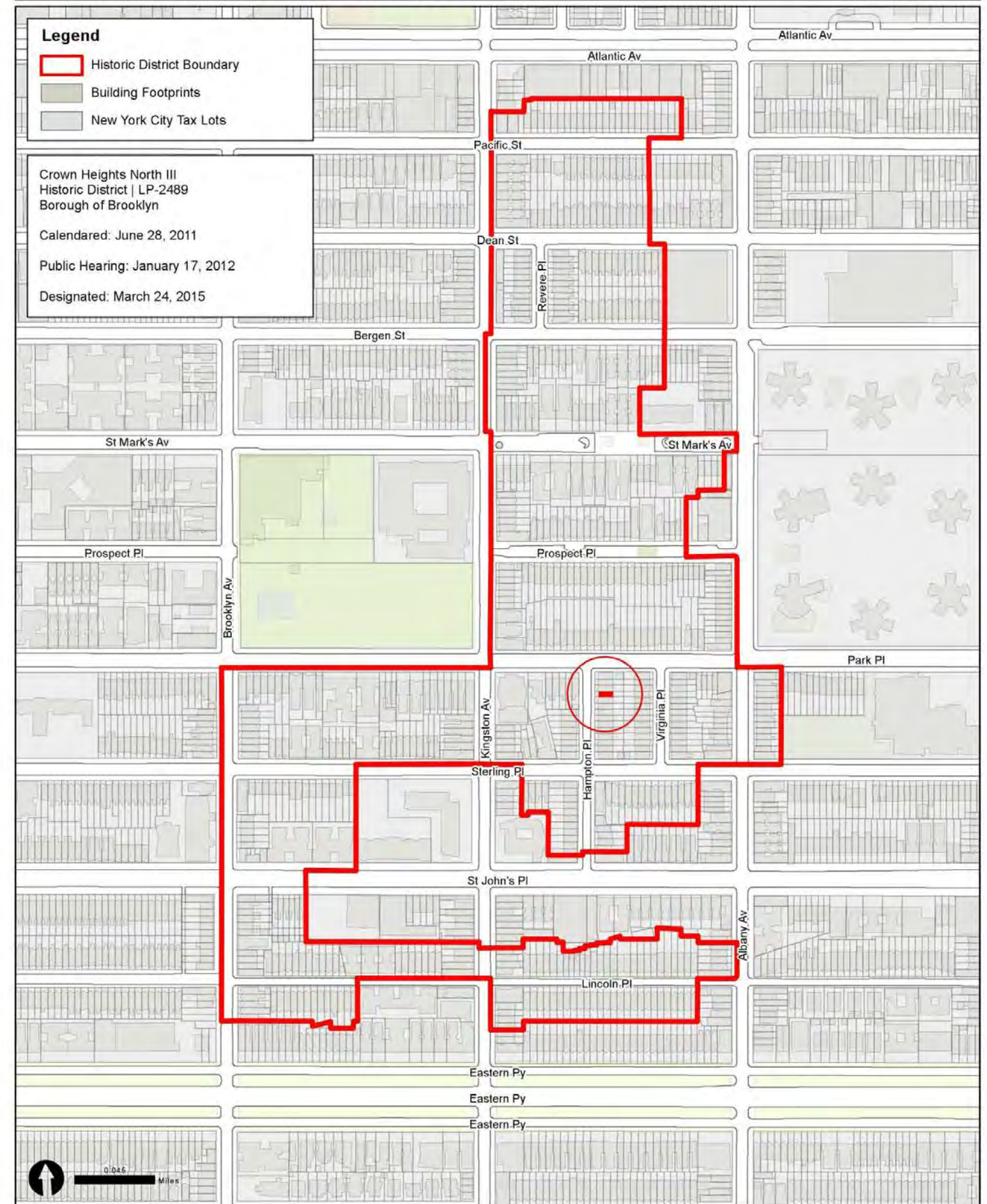
US 888 475 4499 (Toll free)

Note: If you want to testify on an item, join the Zoom webinar at the agenda's "Be Here by" time (about an hour in advance). When the Chair indicates it's time to testify, "raise your hand" via the Zoom app if you want to speak (*9 on the phone). Those who signed up in advance will be called first.

5 Hampton Place

Crown Heights North III Historic District

- Modification of rear window openings
- Construction of a deck





1940 Tax Photo



2020 Photo





View from Park Place



View from Park Place



5 Hampton Place Rear Facade

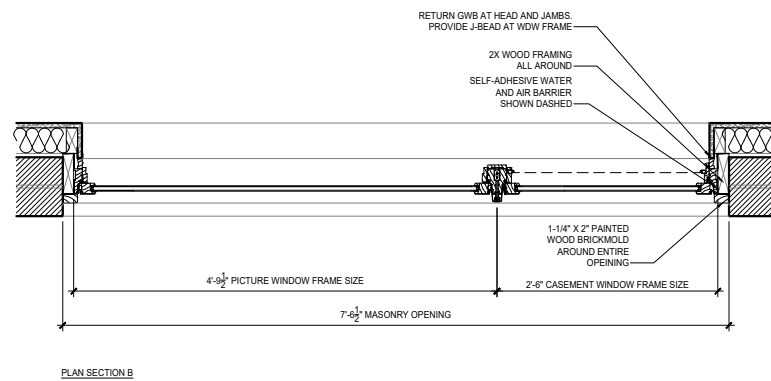
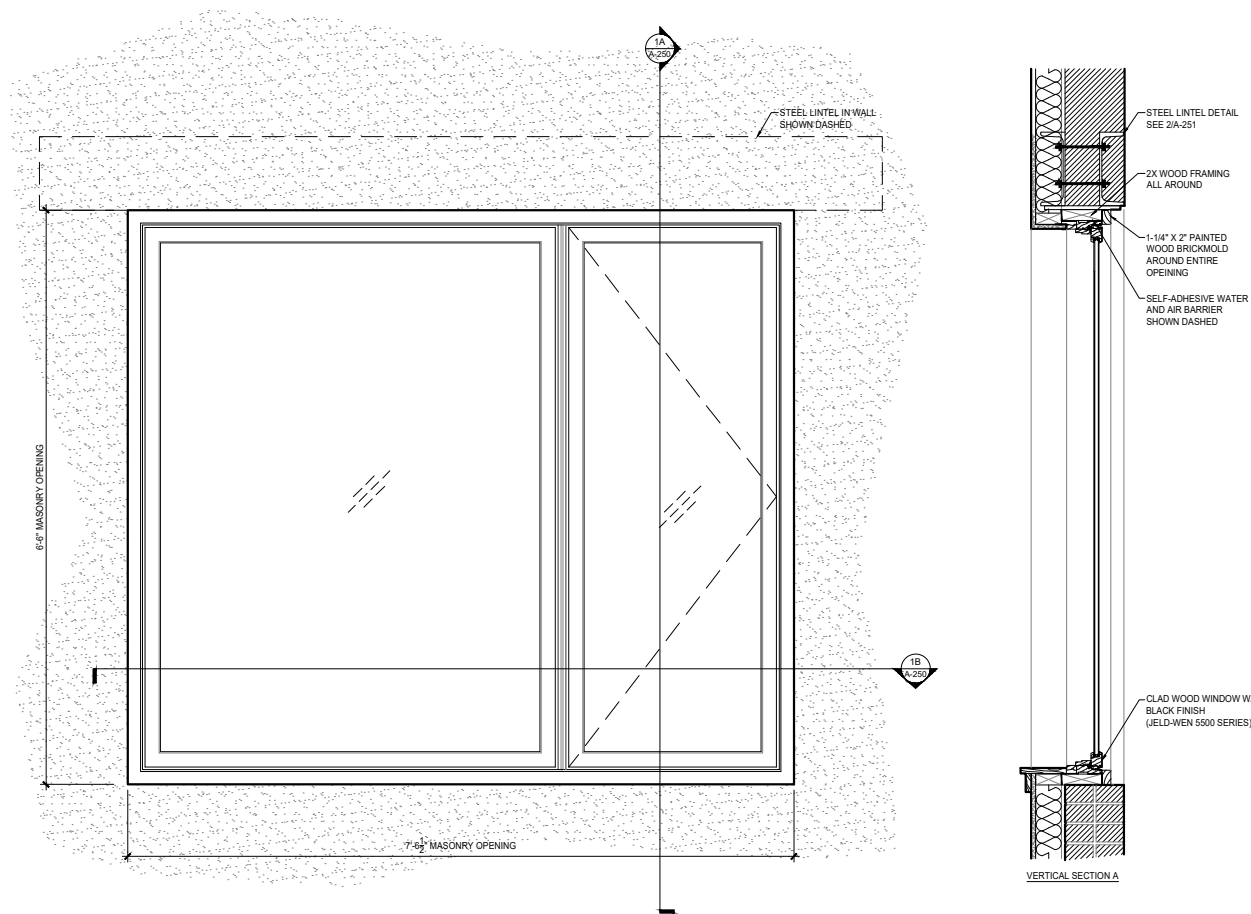




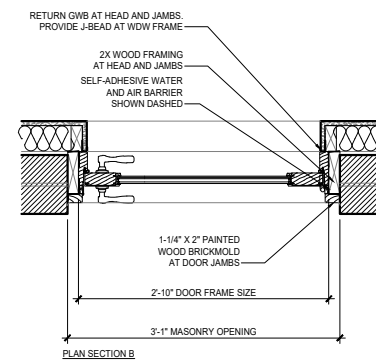
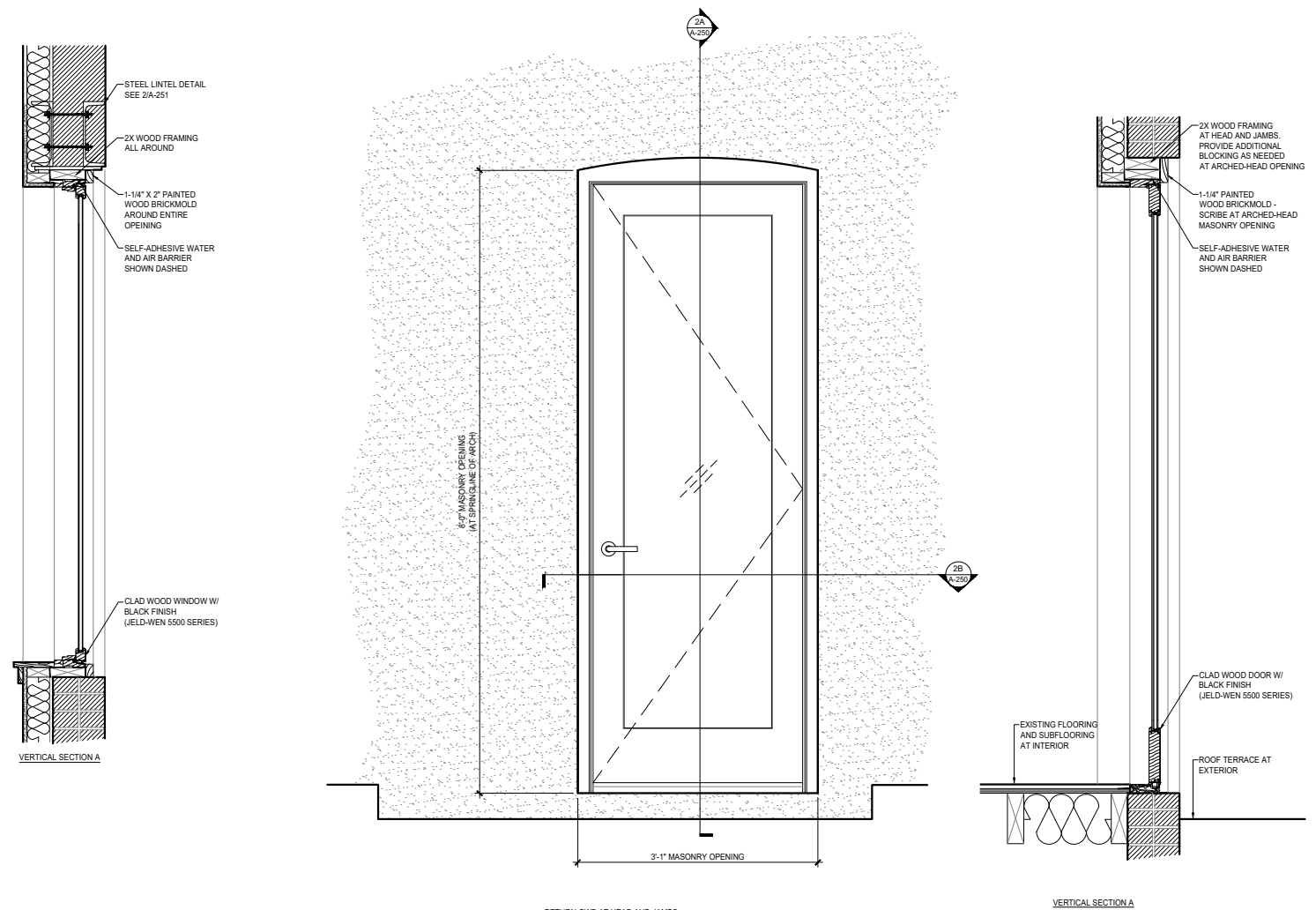
**5 Hampton Place
Existing Rear Facade**



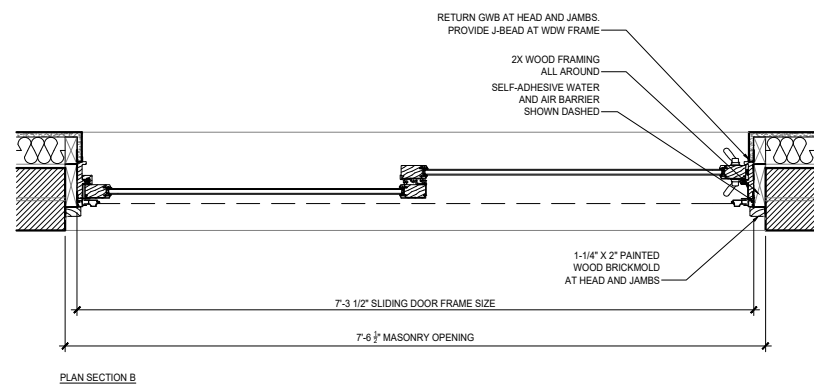
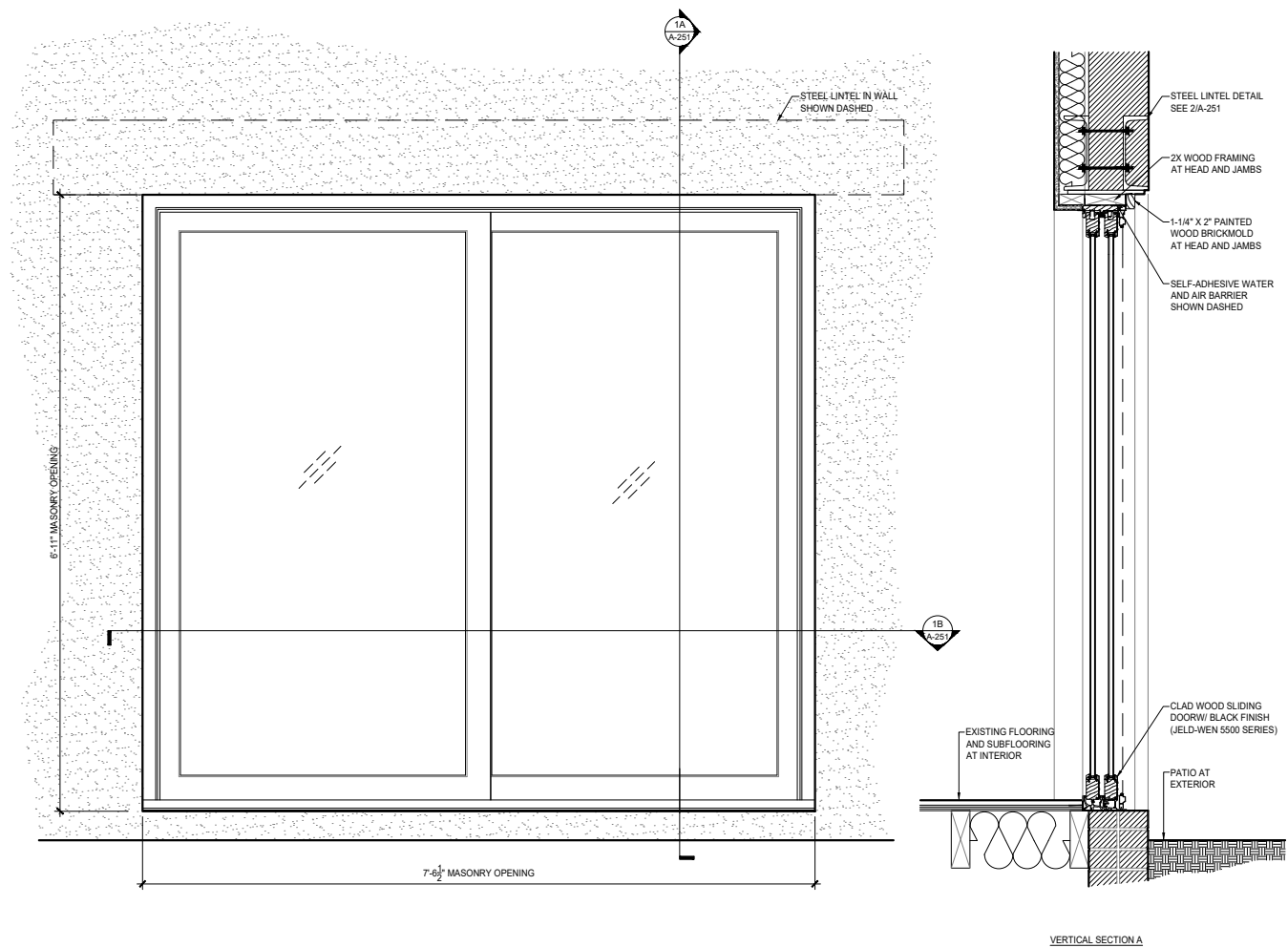
5 Hampton Place
Proposed Rear Facade



1 ELEVATION AT REAR WINDOW - FIRST FLOOR
A-250 1" = 1'-0"



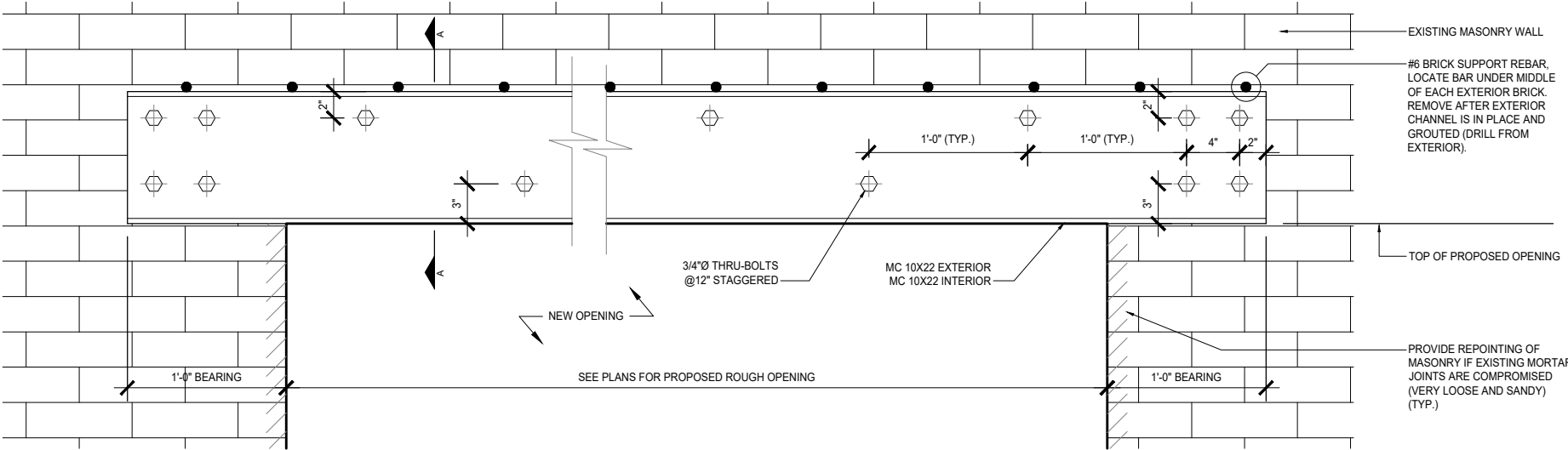
2 ELEVATION AT REAR DOOR - FIRST FLOOR
A-250 1" = 1'-0"



1
A-251

ELEVATION AT SLIDING DOORS - BASEMENT LEVEL

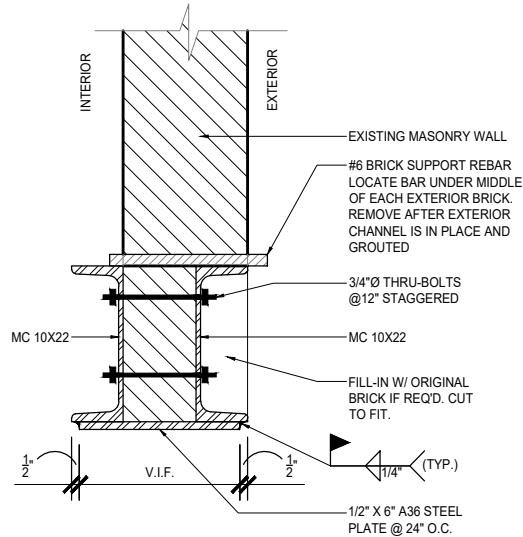
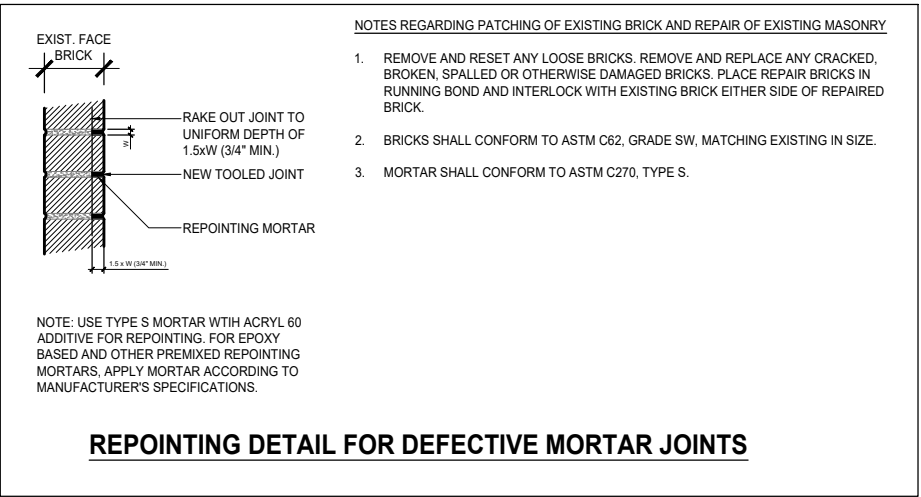
1" = 1'-0"



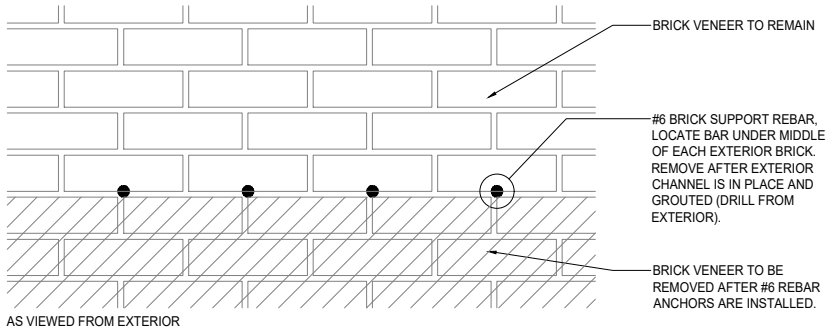
NEW LINTELS AT MASONRY WALL OPENING DETAIL

NEW LINTEL INSTALLATION PROCEDURE

1. USING $\frac{5}{8}$ " DIAMETER CORE DRILL, MAKE PILOT HOLES INTO EXTERIO MORTAR JOINT ABOVE LOCATION OF PROPOSED LINTEL. PILOT HOLES MUST BE CENTERED UNDER THE EXTERIOR BRICK ABOVE. INSTALL #6 (60 KSI) REBAR THROUGH ALL WYTHES OF BRICK TO ALLOW FOR EXTERIOR BRICK SUPPORT.
2. REMOVE MINIMUM FOUR COURSES OF BRICK, $3\frac{1}{2}" \pm$ DEEP ON EXTERIOR SIDE OF THE EXISTING MASONRY WALL ABOVE THE FUTURE OPENING FOR CHANNEL INSTALLATION.
3. CLEAN VERTICAL SURFACE OF THE EXPOSED MASONRY TO ALLOW MAXIMUM CONTACT BETWEEN MASONRY AND CHANNEL'S WEB (SKIM COAT VERTICAL SURFACE WITH GROUT MIXED WITH ACRYL 60 IF REQUIRED).
4. INSTALL CHANNELL WITH PRE-DRILLED HOLES INSIDE OF THE CHASE. SHIM AND GROUT TOP FLANGE OF CHANNEL TIGHT AGAINST MASONRY ABOVE.
5. DRILL HOLES IN MASONRY FOR FUTURE THROUGH-BOLT INSTALLATION. USE CORE DRILL BIT FOR HOLES. USE OF HAMMER DRILL IS PROHIBITED.
6. INSTALL THROUGH-BOLTS INTO THE EXTERIOR CHANNEL AND INSTALL CHANNEL ON INTERIOR SIDE.
7. TIGHTEN ALL BOLTS WITH TORQUE WRENCH TO DEVELOP 90 LB/FT IN TORQUE.
8. INSTALL $\frac{1}{2}" \times 6"$ STEEL PLATES UNDER BOTH CHANNELLS AT 24" O.C. NOTCH BRICK LOCALLY FOR SUCH PLATE INSTALLATION.
9. REMOVE BRICK VENEER SUPPORT ANCHORS AND SHIM/GROUT REMAINING VOIDS ABOVE THE LINTEL.
10. REMOVE PORTION OF MASONRY WALL BELOW NEW LINTEL AS REQUIRED FOR FUTURE OPENING. HAND TOOLS MUST BE USED IN ORDER TO NOT DISTURB MASONRY BETWEEN CHANNELS.



SECTION A-A



BRICK VENEER SUPPORT ANCHOR DETAIL

The current proposal is:

Preservation Department – Item 3, LPC-20-04101

**5 Hampton Place – Crown Heights North II Historic District,
Borough of Brooklyn**

How to Testify Via Zoom:

<https://us02web.zoom.us/j/87295131867?pwd=UFpLRGxVNy90eDVBNGgvUE9NMkhwQT09>

Webinar ID: 872 9513 1867

Password: 866444

By Phone: 1 646-558-8656

US (New York) 877-853-5257 (Toll free)

US 888 475 4499 (Toll free)

Note: If you want to testify on an item, join the Zoom webinar at the agenda's "Be Here by" time (about an hour in advance). When the Chair indicates it's time to testify, "raise your hand" via the Zoom app if you want to speak (*9 on the phone). Those who signed up in advance will be called first.