

The current proposal is:

Preservation Department – Item 1, LPC-20-10551

1 East 70th Street – The Frick Collection

Borough of Manhattan

Note: this is a Public Meeting item. No public testimony will be received today as the hearing on this item is closed.

Landmarks Preservation Commission

The Frick Collection

Ammendment to
LPC CoA #19-25099 to Modify
Approved Mechanical Screen

06 October 2020



Approved 70th Street View



SELLDORF ARCHITECTS

**BEYER
BLINDER
BELLE**



THE FRICK
COLLECTION

Proposed 70th Street View



Previously & Currently Proposed 70th Street Elevation



PREVIOUSLY PROPOSED ELEVATION



CURRENTLY PROPOSED ELEVATION

Previously & Currently Proposed 5th Ave Elevation



PREVIOUSLY PROPOSED ELEVATION



CURRENTLY PROPOSED ELEVATION

Previously & Currently Proposed 71st Street Elevation



PREVIOUSLY PROPOSED ELEVATION



CURRENTLY PROPOSED ELEVATION

Street Views

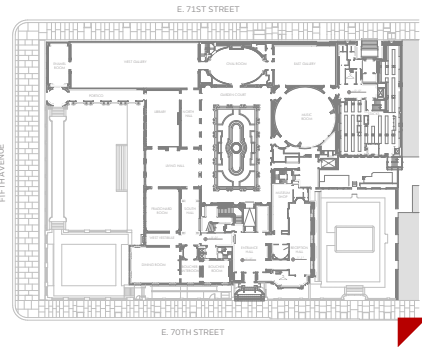
Previously & Currently Proposed View Along 70th Street



PREVIOUSLY PROPOSED



CURRENTLY PROPOSED



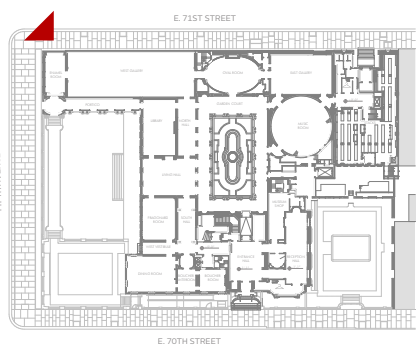
Previously & Currently Proposed View Along 71st Street



PREVIOUSLY PROPOSED



CURRENTLY PROPOSED



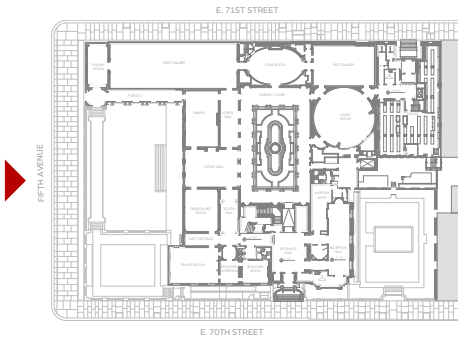
Previously & Currently Proposed View From Central Park



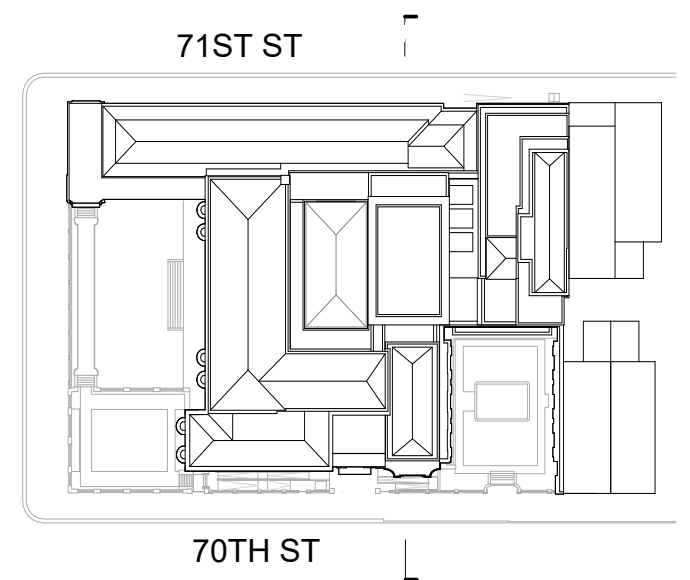
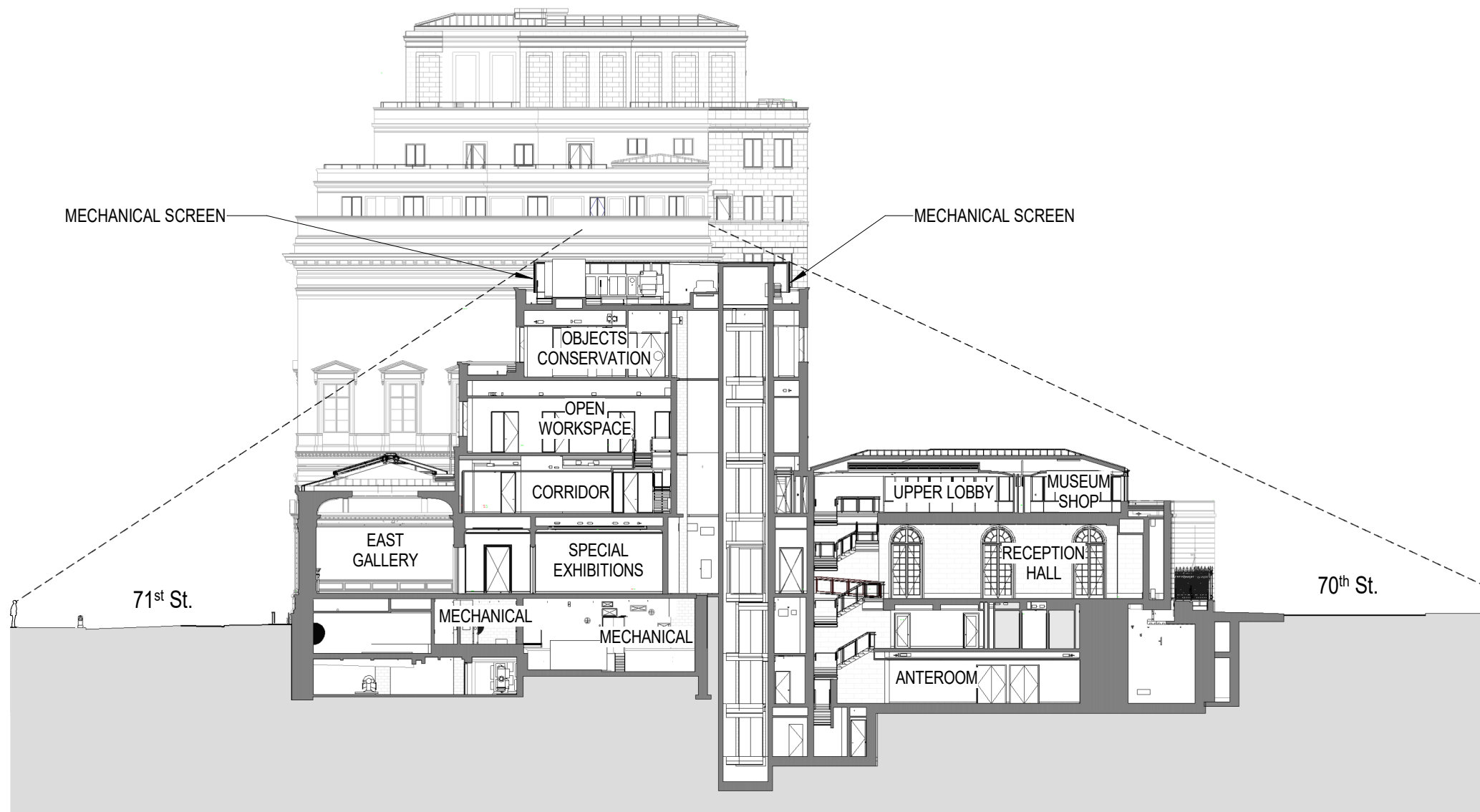
PREVIOUSLY PROPOSED



CURRENTLY PROPOSED

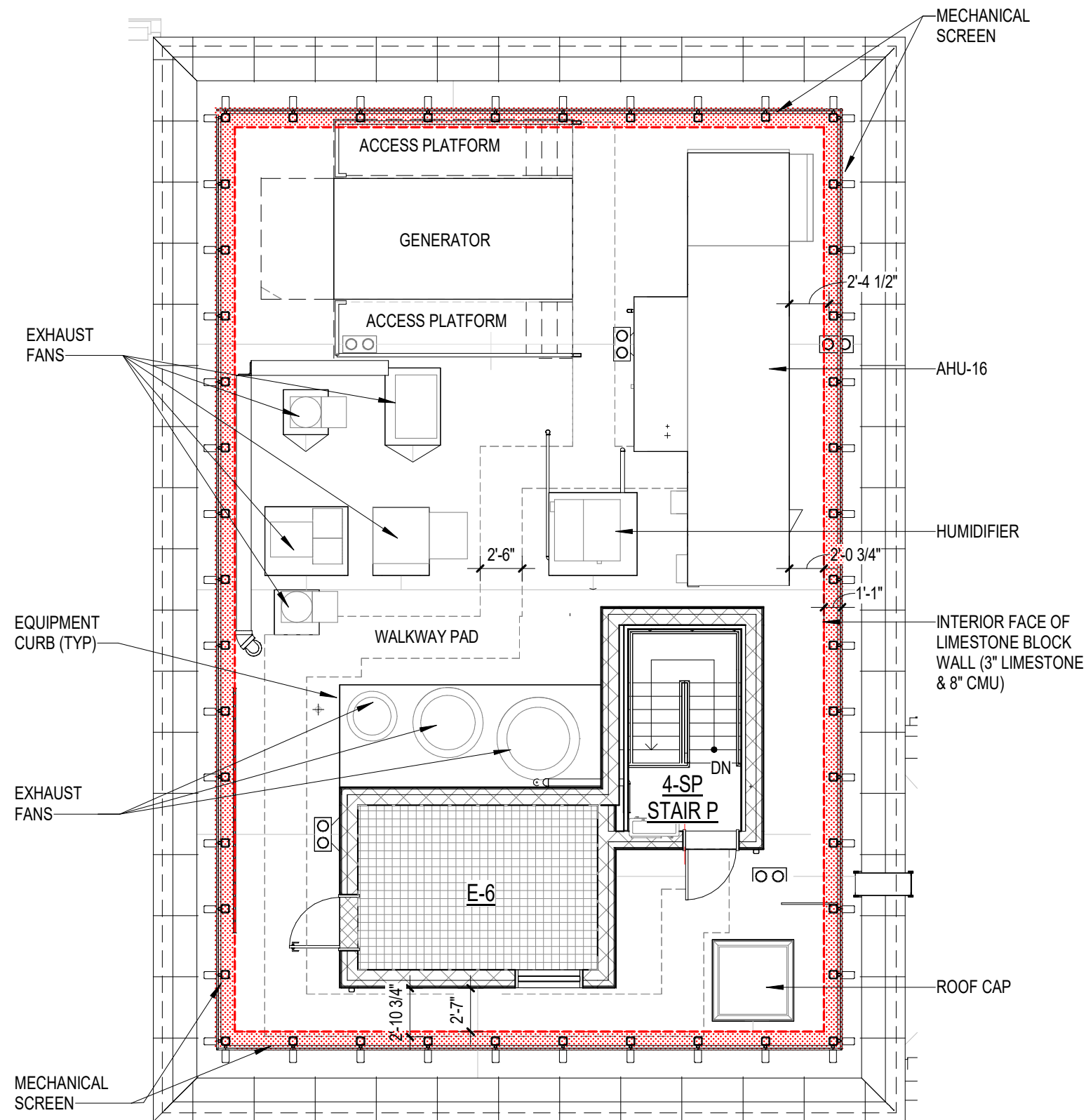



Mechanical Screen



KEY PLAN

1 PROPOSED NORTH-SOUTH SECTION
1" = 30'-0"



LIMESTONE CLAD BLOCK
(FULL THICKNESS SHOWN IN )
SPACE REMAINING BETWEEN BACK
OF LIMESTONE & MEP EQUIPMENT
DOES NOT ALLOW FOR REQUIRED
CLEARANCES

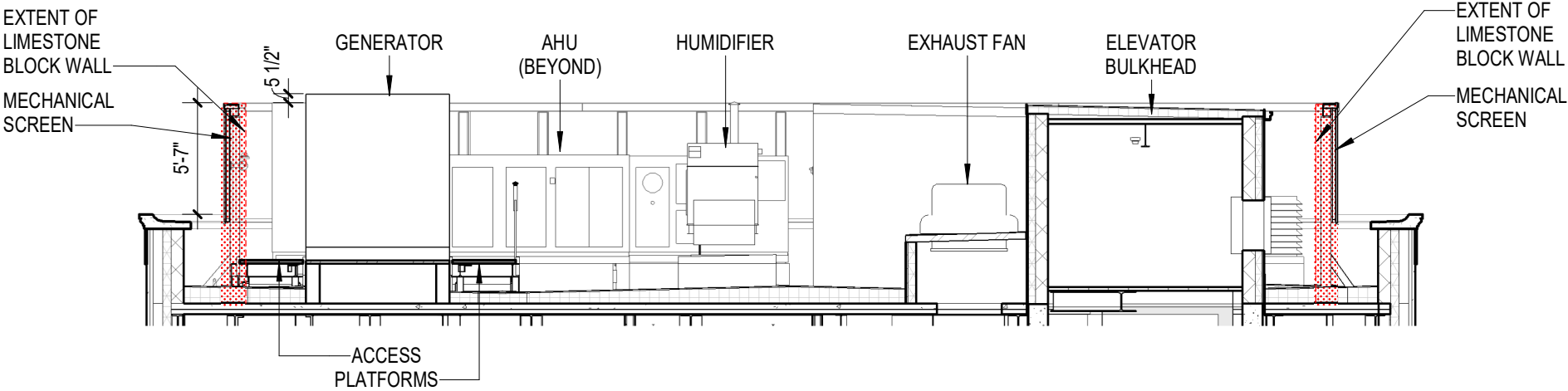
LIMESTONE ON HONEYCOMB
RESOLVES ACCESS ISSUES.
TOO FRAGILE FOR USE AT
MECHANICAL ROOF LEVEL DUE TO
ROOFTOP MAINTENANCE & FACADE
CLEANING

COPPER SCREEN
PROVIDES REQUISITE SPACE AND
RESOLVES ISSUES OF DURABILITY
AT ROOFTOP

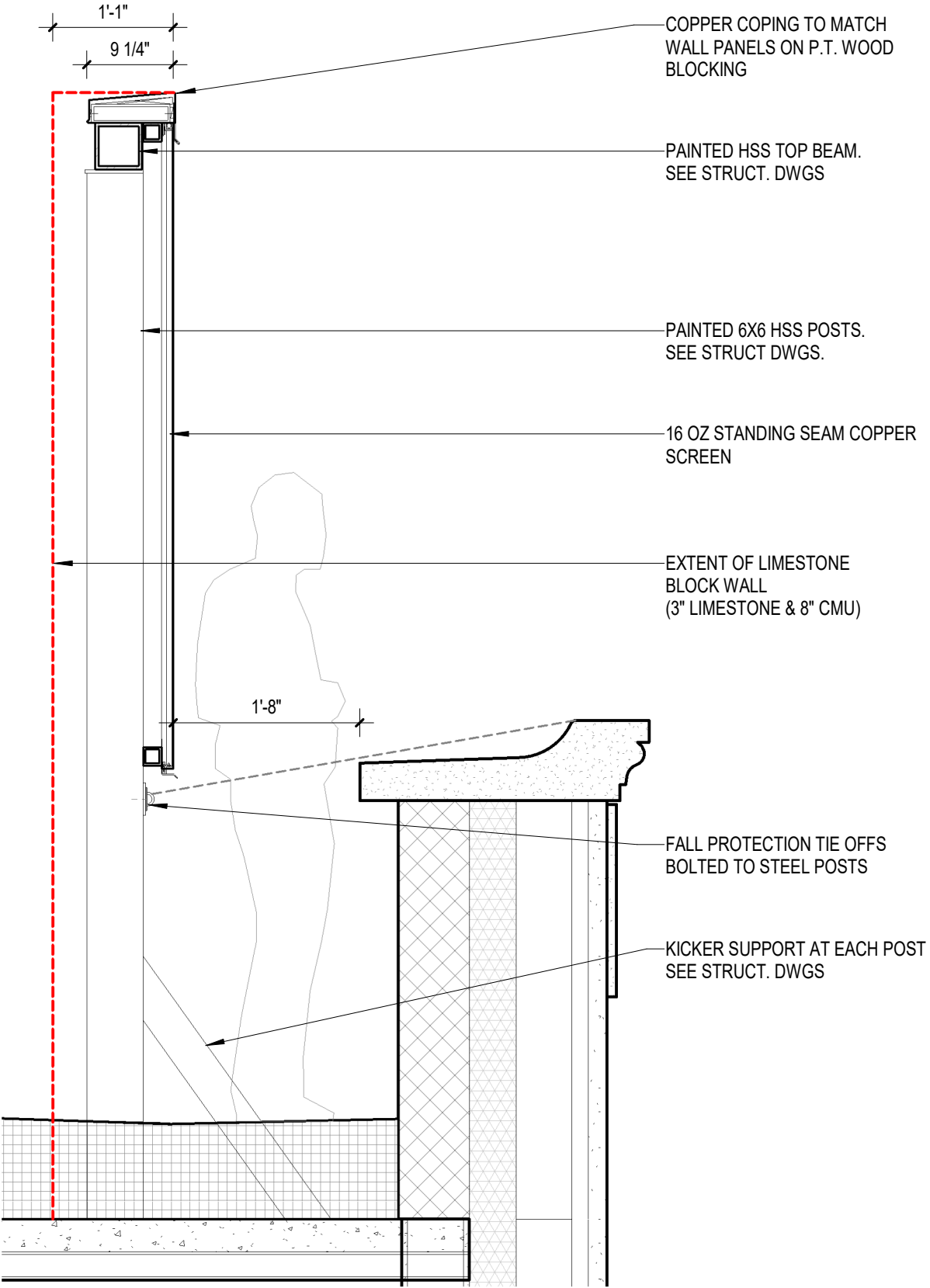
LIMESTONE CLAD BLOCK
(FULL THICKNESS SHOWN IN)
SPACE REMAINING BETWEEN BACK
OF LIMESTONE & MEP EQUIPMENT
DOES NOT ALLOW FOR REQUIRED
CLEARANCES

LIMESTONE ON HONEYCOMB
RESOLVES ACCESS ISSUES.
TOO FRAGILE FOR USE AT
MECHANICAL ROOF LEVEL DUE TO
ROOFTOP MAINTENANCE & FACADE
CLEANING

COPPER SCREEN
PROVIDES REQUISITE SPACE AND
RESOLVES ISSUES OF DURABILITY
AT ROOFTOP



1 OVERBUILD N-S SECTION LOOKING EAST
1/8" = 1'-0"



2 MECHANICAL SCREEN SECTION
3/4" = 1'-0"

Materials





APPROVED
INDIANA LIMESTONE



OPTION PROPOSED AT 100% CD
PURE+FREEFORM CUSTOM LIMESTONE-
COLORLED PAINTED ALUMINUM PANELS



PROPOSED OCTOBER 6, 2020
NATURALLY-AGED STANDING-SEAM COPPER
(SAMPLE SHOWN REPRESENTS 5-6 YEARS OF AGING)

Proposed 70th Street View



The current proposal is:

Preservation Department – Item 1, LPC-20-10551

1 East 70th Street – The Frick Collection

Borough of Manhattan

Note: this is a Public Meeting item. No public testimony will be received today as the hearing on this item is closed.