

**February 27, 2024**  
Public Hearing

The current proposal is:

**Preservation Department – Item 11, LPC-24-00943**

**40 West 106th Street – Manhattan Avenue Historic District**  
**Borough of Manhattan**

**To testify virtually, please join Zoom**

**Webinar ID:** 827 9697 0950

**Passcode:** 116544

By Phone: 1 646-558-8656 US (New  
York) 877-853-5257 (Toll free) US  
888 475 4499 (Toll free)

**Note:** If you want to testify virtually on an item, join the Zoom webinar at the agenda's "Be Here by" time (about an hour in advance). When the Chair indicates it's time to testify, "raise your hand" via the Zoom app if you want to speak (\*9 on the phone). Those who signed up in advance will be called first.



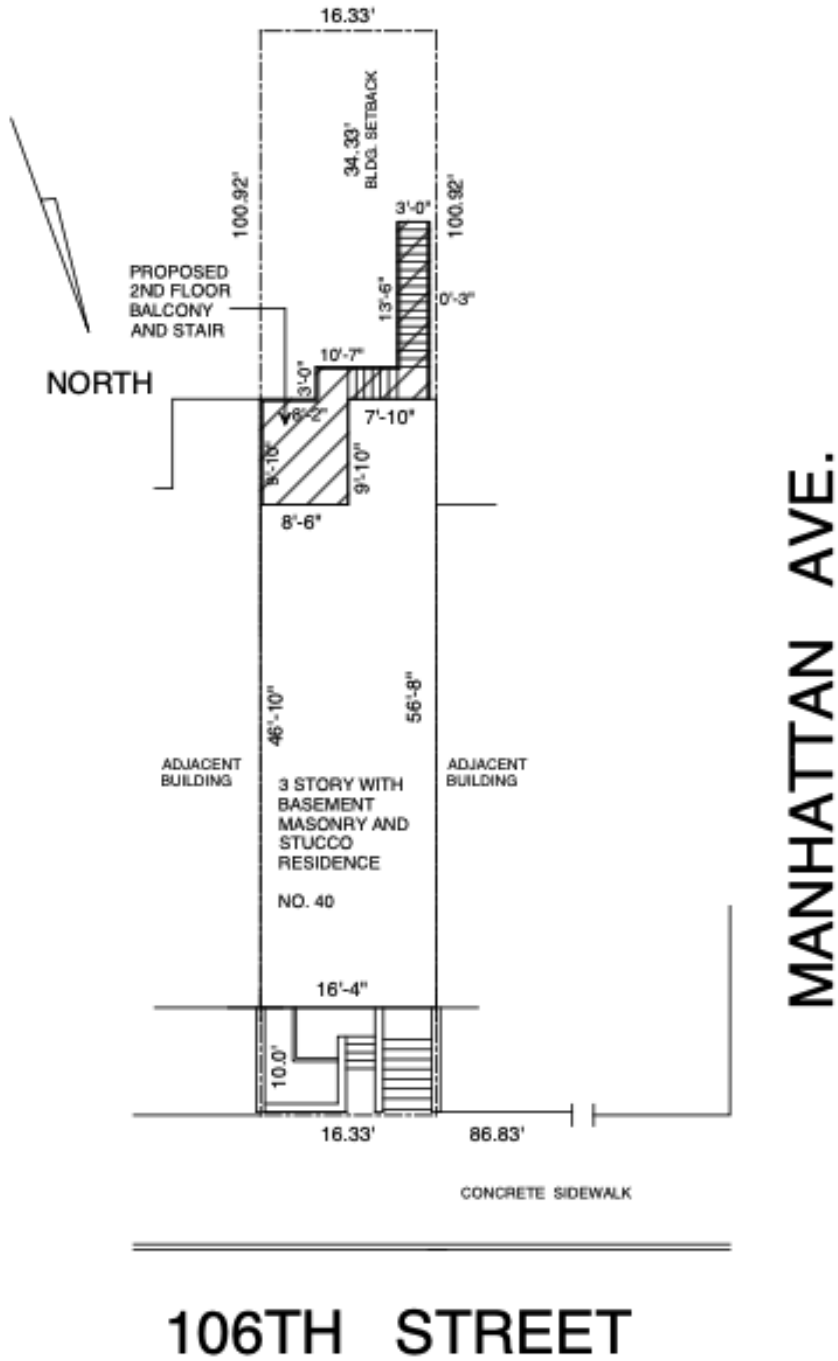
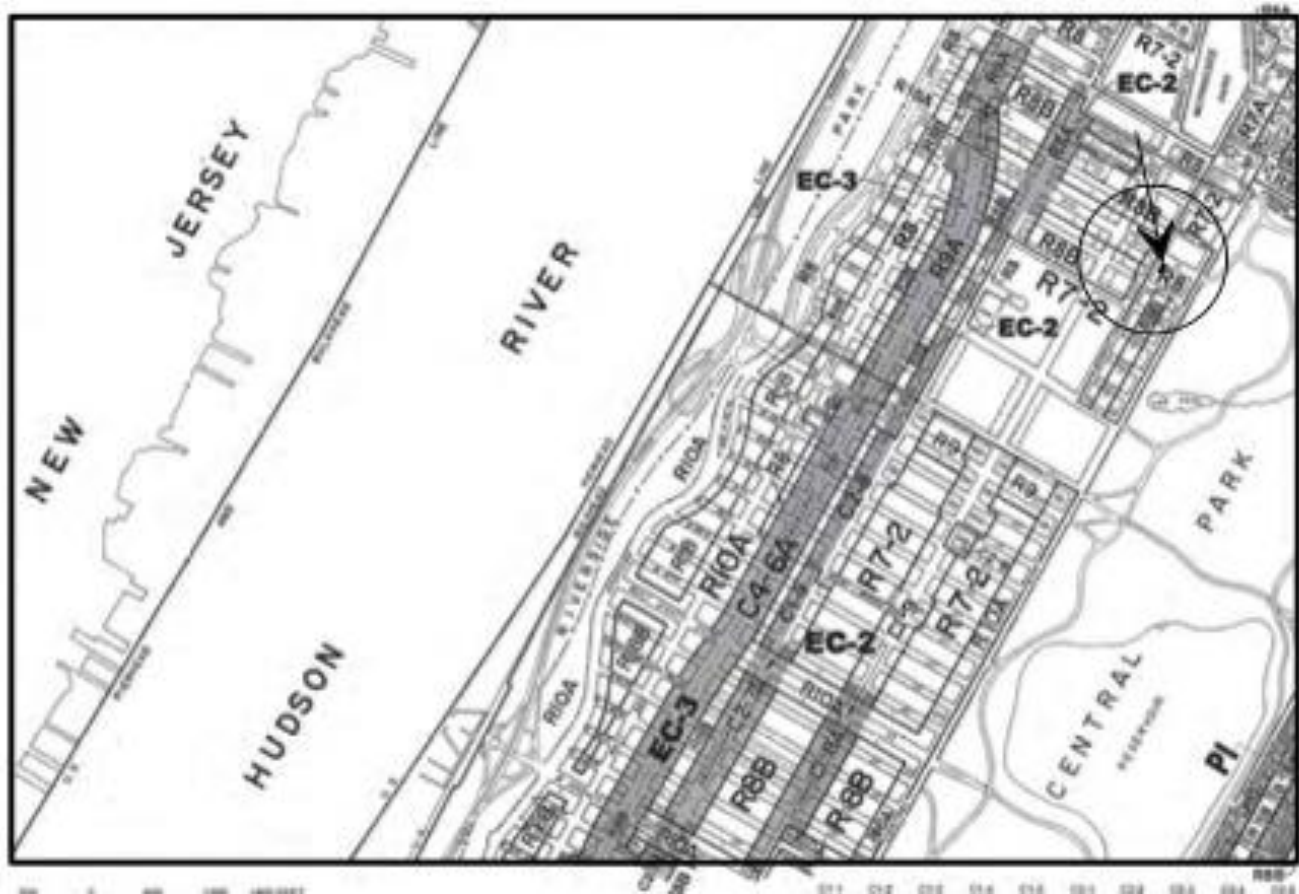
# 40 W 106<sup>th</sup> Street

4 stories House in the Manhattan Avenue  
Historic District, Ondrej Krehel

Proposed Rear Balcony with fire escape stairs



# Exterior Alterations





# View of the Front Façade – 106<sup>th</sup> street

---





# Aerial view of the block at 106<sup>th</sup> and Manhattan avenue

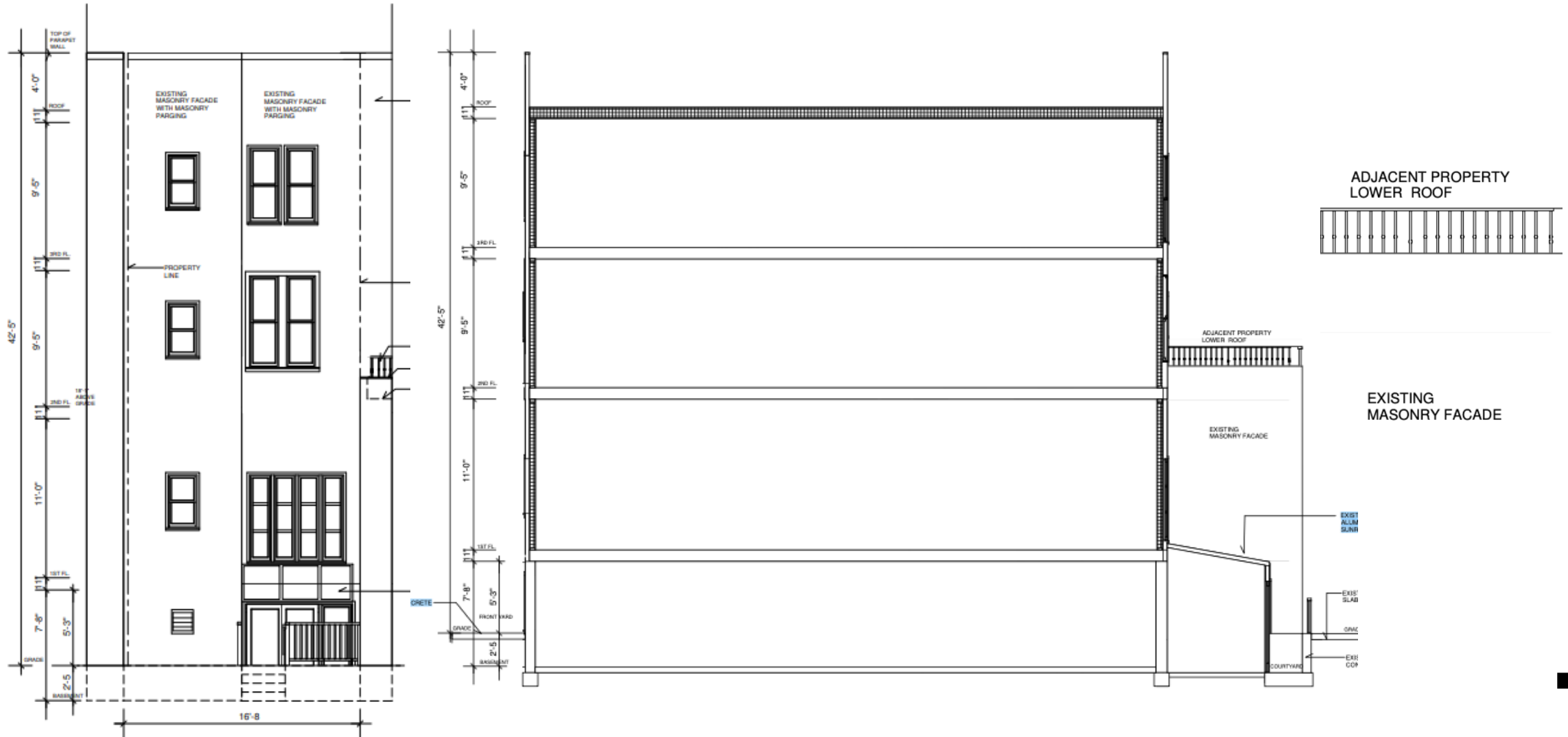




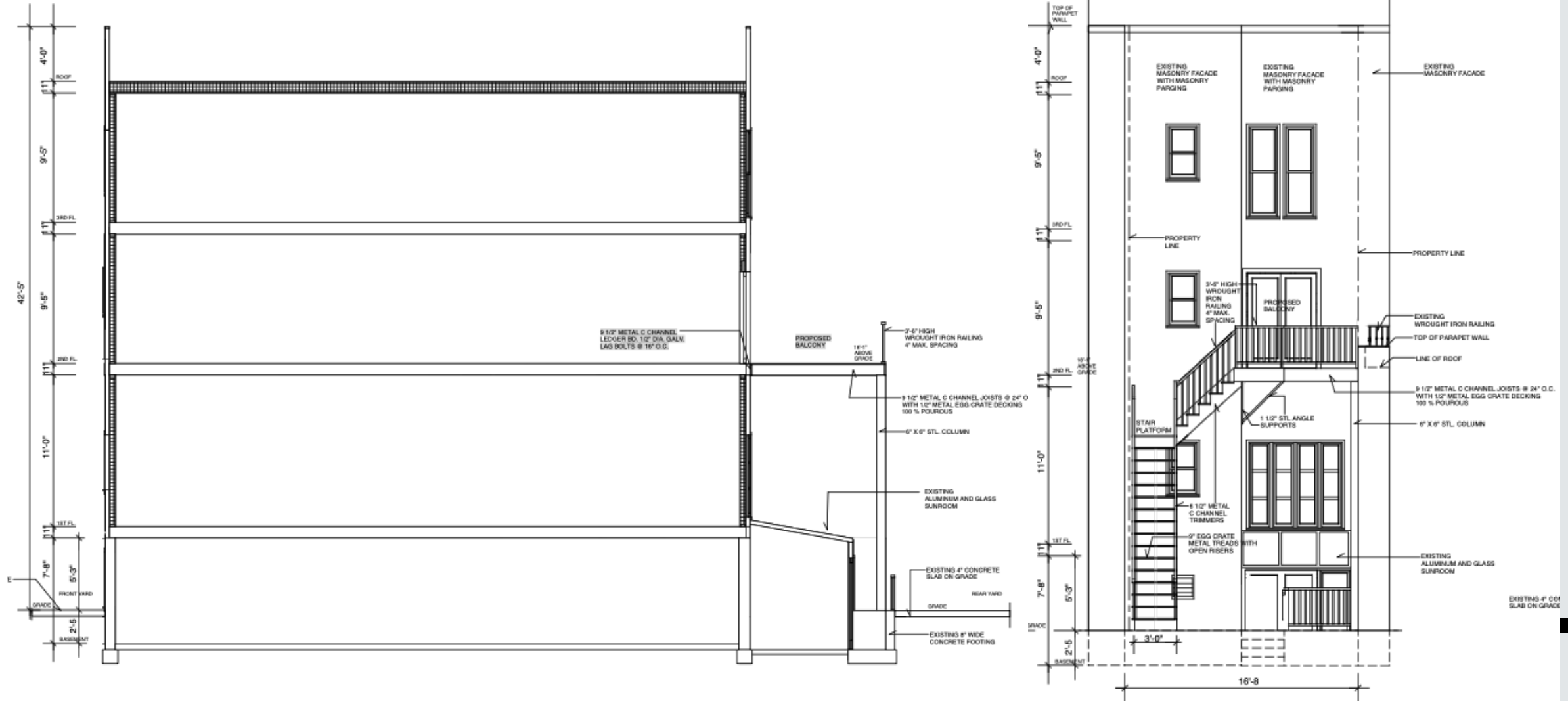
# Rear façade



# Existing Building Cross Section

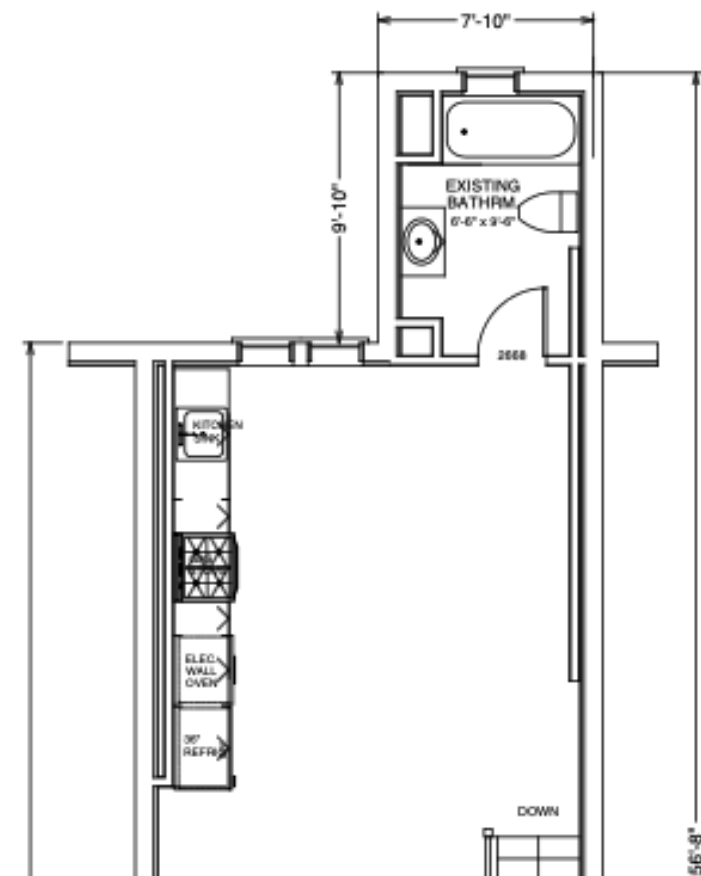
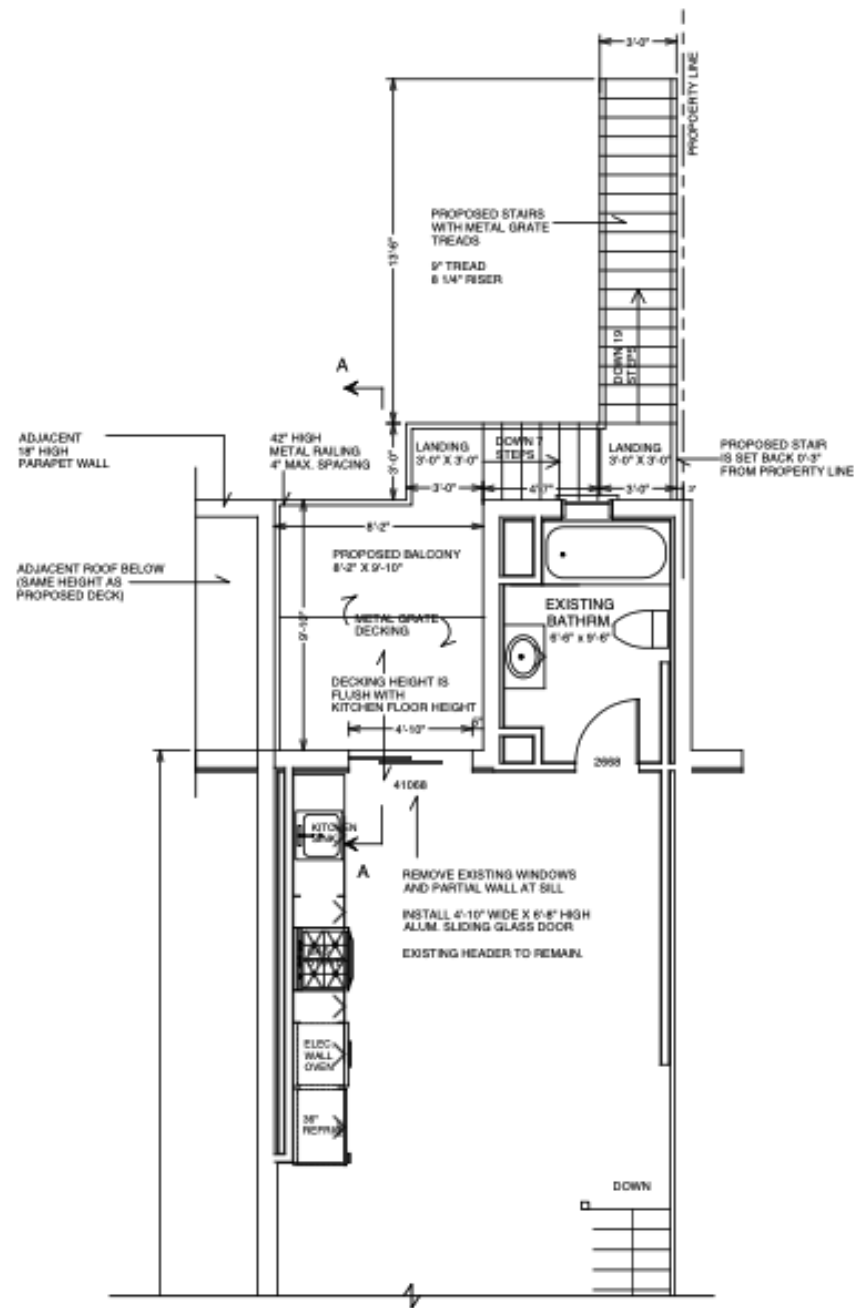


# Proposed Balcony with fire escape stairs

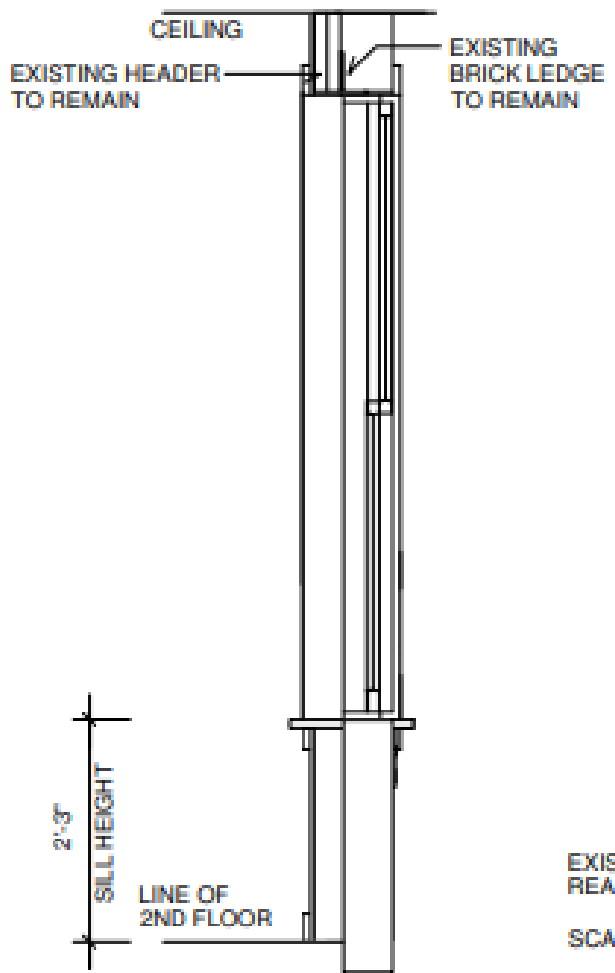
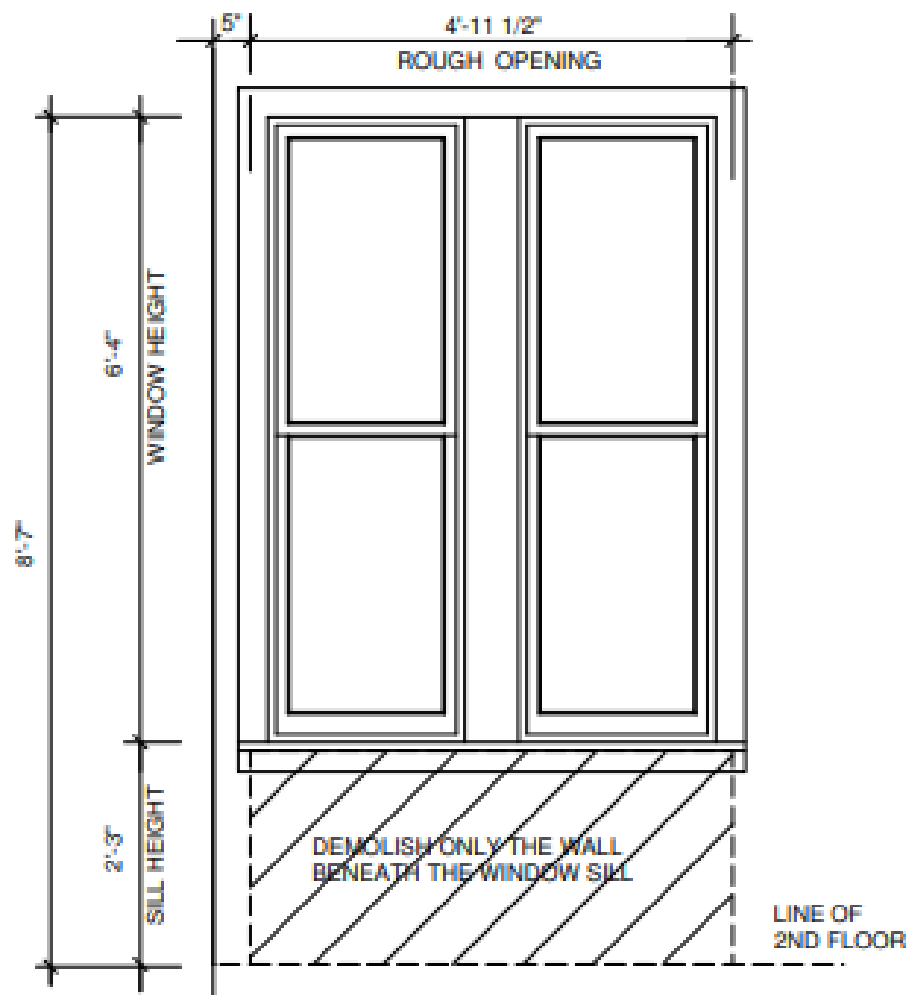




Proposed  
second  
floor  
and  
existing  
second  
floor



# Existing building cross section window

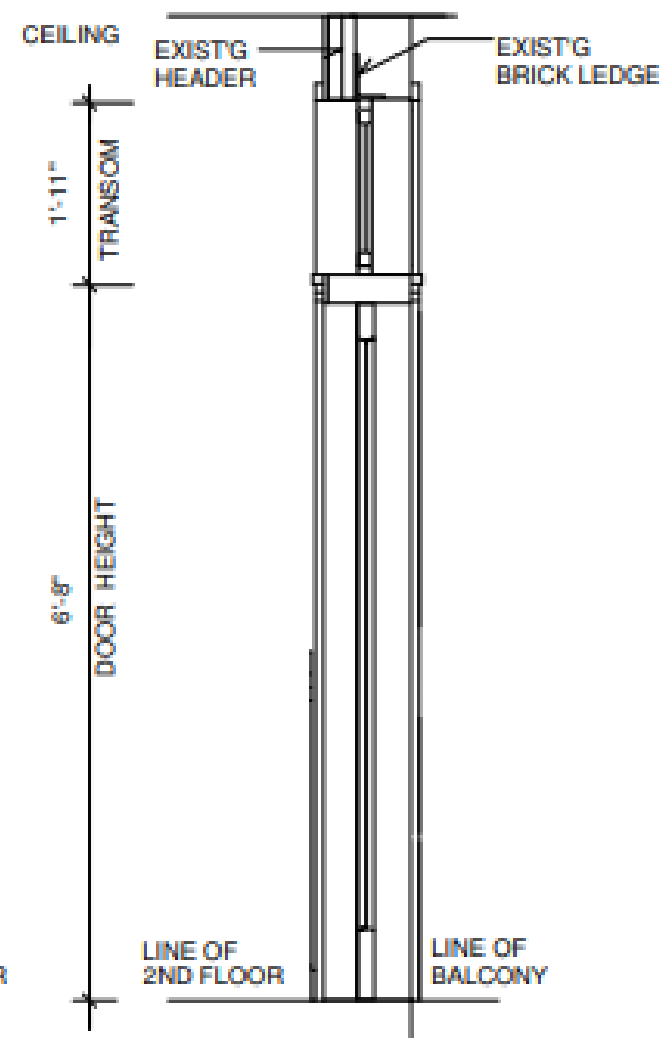
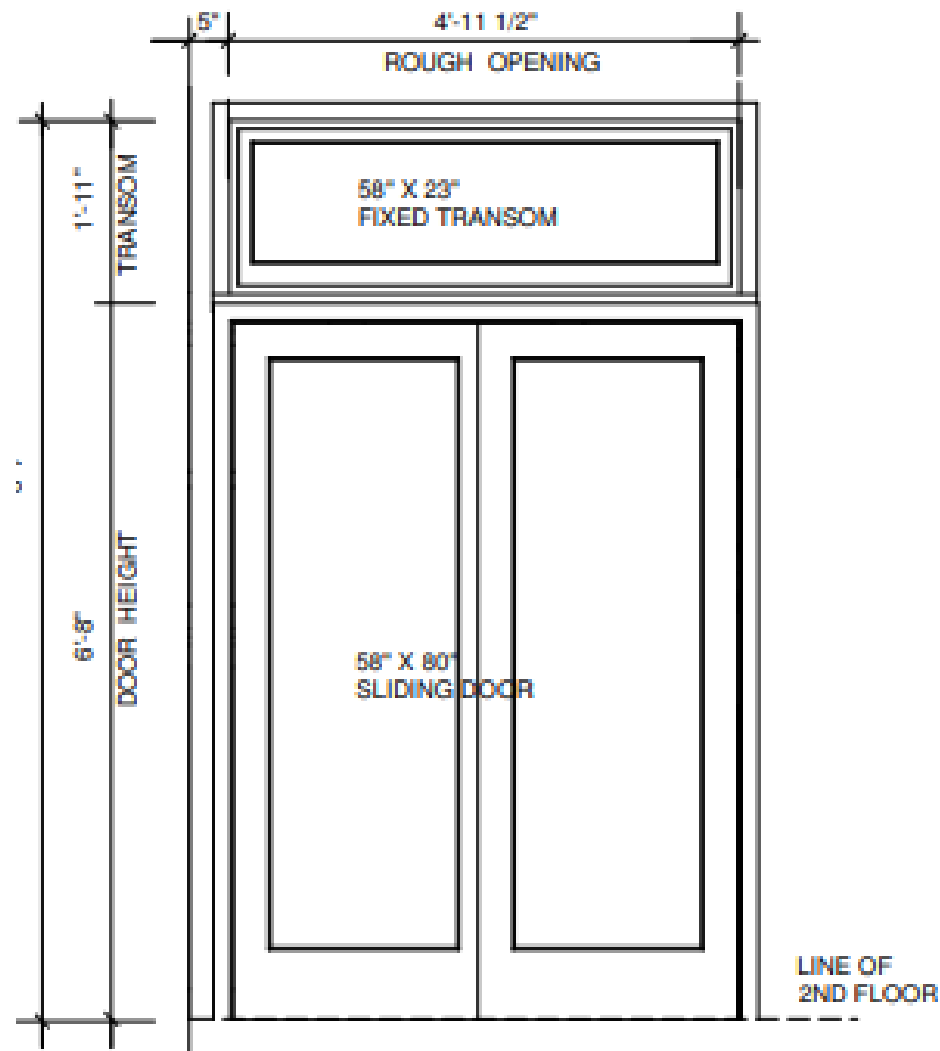


EXISTING 2ND FLOOR  
REAR WINDOW - SECTION  
SCALE: 3/4" = 1'-0"





# Proposed building cross section window



PROPOSED 2ND FLOOR  
SLIDING DOOR - SECTION  
SCALE: 3/4" = 1'-0"

# 2<sup>nd</sup> level rooftop terraces of other brownstones



The red dot is where the rear balcony is proposed

Red Circles are all 2<sup>nd</sup>-level balconies in the buildings' rear section





# 41 W 105<sup>th</sup> Street and 134 Manhattan Avenue





# Sketch of the stairs and Railing





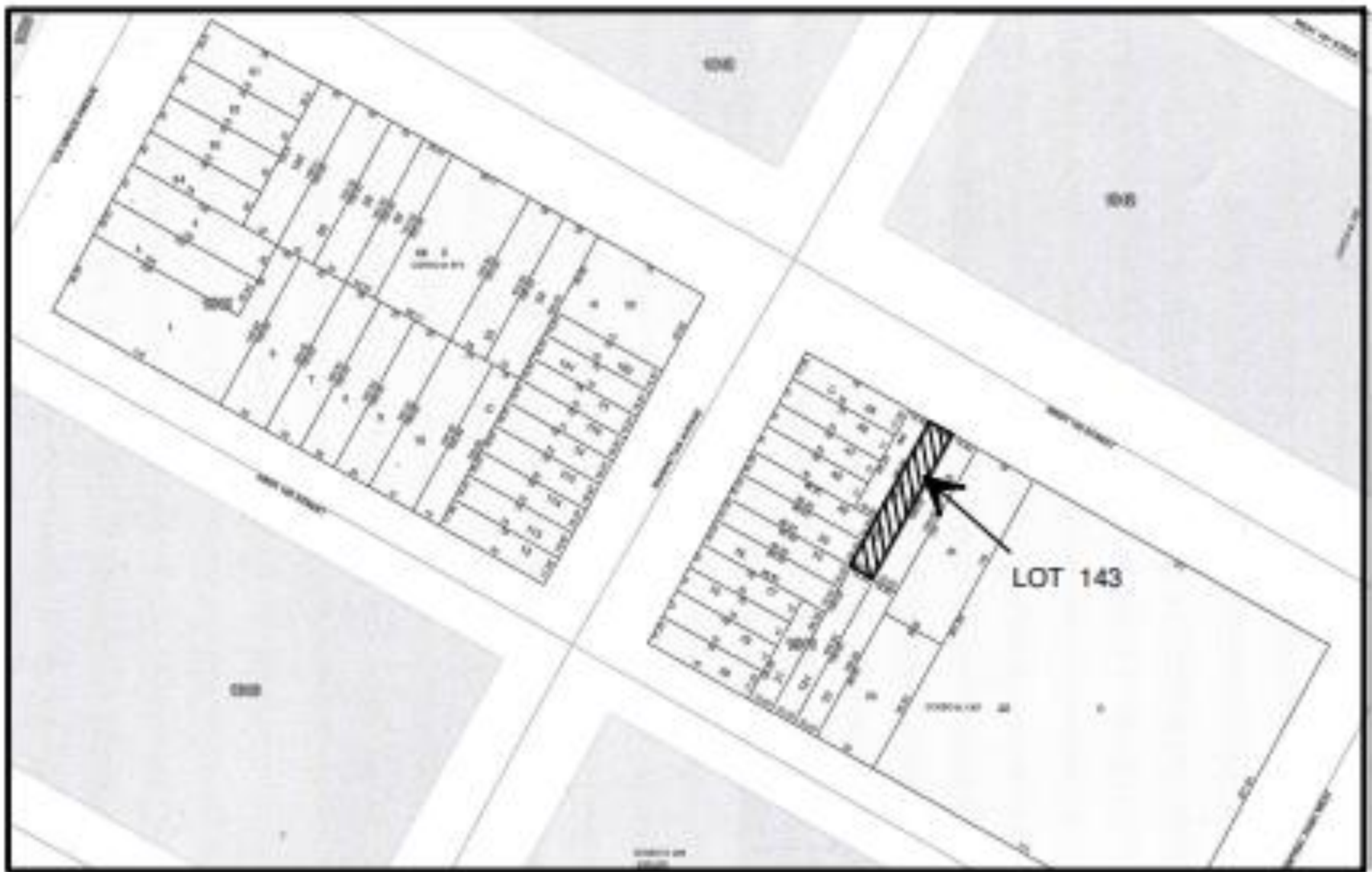
End slide



# Location



# Location – block plan





# Material used - Patio door

## CTP-1240 Commercial Thermal Break Aluminum Sliding Patio Door



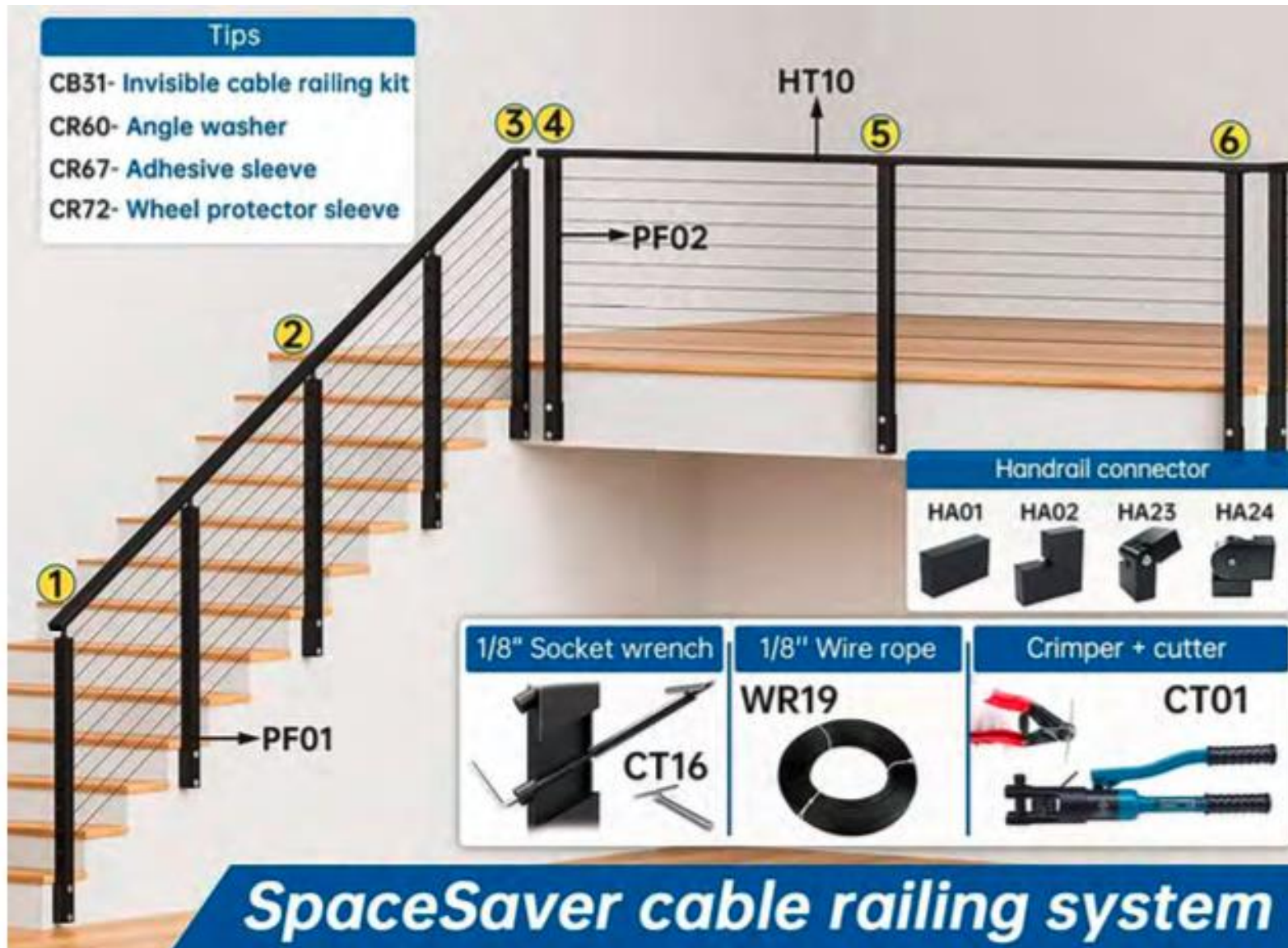
### Product Features

- Knock - down (KD) Pre-Fabricated frame
- 2-Panel (XO/OX) or 3-Panel (OXO)
- AAMA Rating: LC-PG45
- Frame Depth: 4 $\frac{9}{16}$ "
- Tube Sill w/ Concealed Drainage
- Insulating Tempered Glass Unit Size: 1"
- "Intercept" Warm Edge Vitro Spacer
- Bronze or White Colors
  - 2604 Powder Coat Finish
- Fibermesh Locking Screen
- Heavy-Duty Adjustable Dual Tandem Ball Bearing Rollers
- Clear Anodized Sill

### Optional Features

- Low-E Tempered Glass

# Railing Muzata Steel

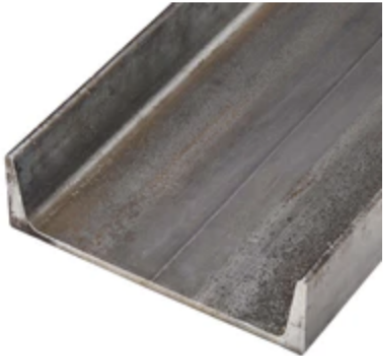


# Construction steel for frames and pillars

## 8" X 11.5# (2.26 X .22) HOT ROLLED STRUCTURAL CHANNEL ASTM A36

### ABOUT

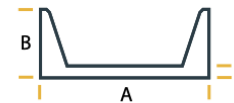
### CHEMISTRY



**SPECIFICATIONS:**  
ASTM A36

**APPLICATIONS:**  
Used for general purpose structural and mechanical applications such as riveted, bolted, or welded construction of bridges and buildings. Use for reinforcement products such as bracing, framing or bracketing is also common.

**HOW TO MEASURE:**  
A (Width) X B (Flange) X C (Web)





# Construction steel for frames and pillars

[Home](#) > [Hot Rolled Steel](#) > [Carbon Steel Square Tube A500/A513](#)

## 4" x 0.25" Carbon Steel Square Tube A500/A513 Hot Rolled - Part #: 10379



### 1 Dimension(s) for this product

Height: 4"

Wall: 0.25"

We carry 38 additional available dimensions for Carbon Steel Square Tub

Material Meets These Standard(s): **ASTM-A513, ASTM-A500**(call for availability)  
[Read More Specifications](#) | [See Product Guide](#)

### 2 Select length below or [Custom Cut](#)

☒ 12" (1 ft.) - **\$45.58**  
wt. 12.75 lb.

☐ 36" (3 ft.) - **\$119.38**



February 27, 2024  
Public Hearing

The current proposal is:

**Preservation Department – Item 11, LPC-24-00943**

## **40 West 106th Street – Manhattan Avenue Historic District Borough of Manhattan**

**To testify virtually, please join Zoom**

**Webinar ID:** 827 9697 0950

**Passcode:** 116544

By Phone: 1 646-558-8656 US (New  
York) 877-853-5257 (Toll free) US  
888 475 4499 (Toll free)

**Note:** If you want to testify virtually on an item, join the Zoom webinar at the agenda's "Be Here by" time (about an hour in advance). When the Chair indicates it's time to testify, "raise your hand" via the Zoom app if you want to speak (\*9 on the phone). Those who signed up in advance will be called first.