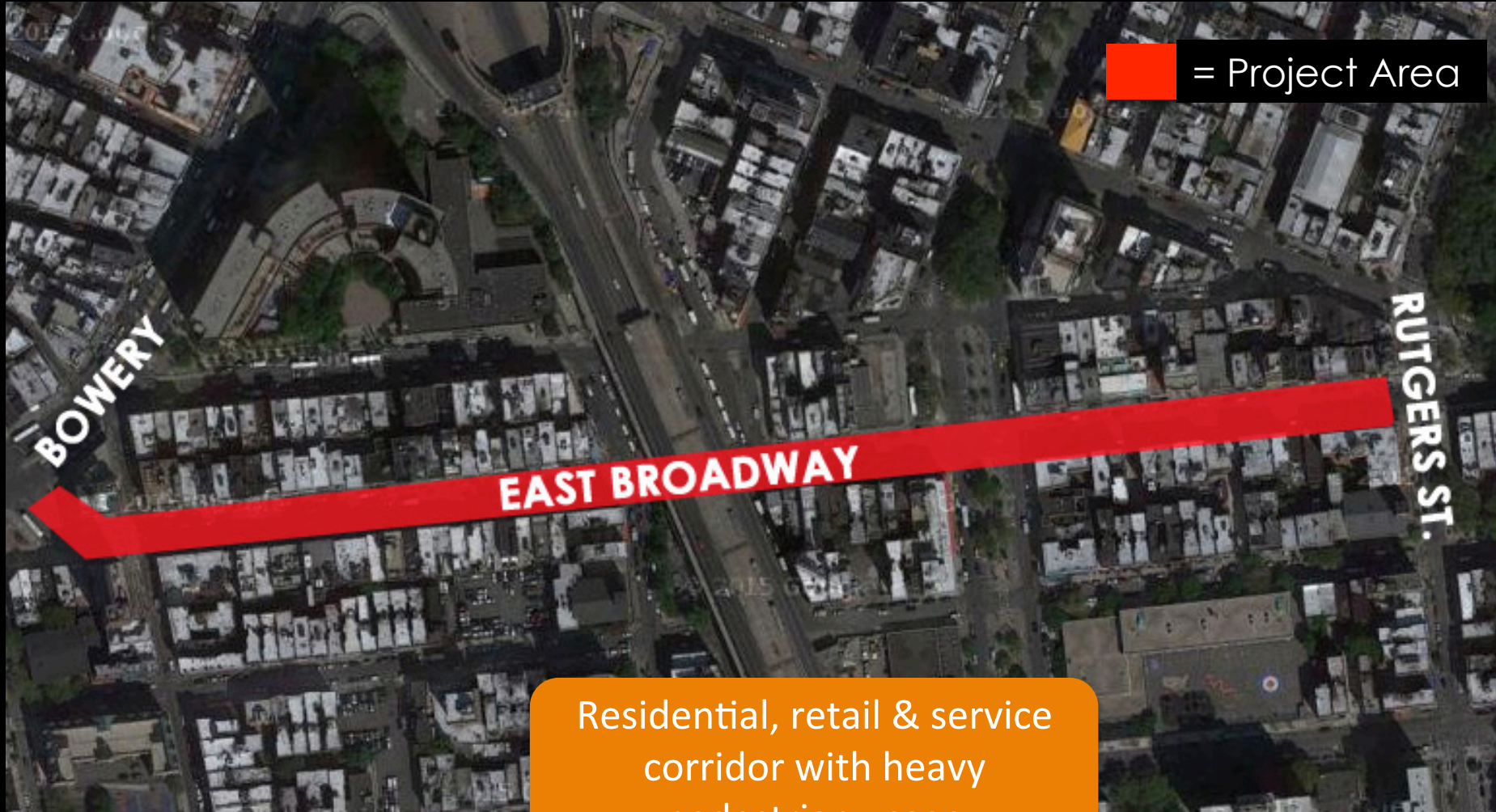


Chinatown Pedestrian Circulation Study



Dylan Dekay-Bemis, FCNY Community Planning Fellow
Presented to the Manhattan Community Board 3 Transportation Committee
May 10, 2016

Project Area



 = Project Area

Residential, retail & service corridor with heavy pedestrian usage

Crash History



4
Pedestrian
Injuries

12
Pedestrian
Injuries

14
Pedestrian
Injuries

10
Pedestrian
Injuries,
1 fatality

2
Pedestrian
Injuries

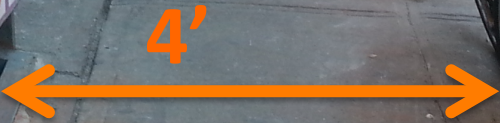
2010 -2015:
42 Pedestrian Injuries
1 Fatality

Existing Conditions

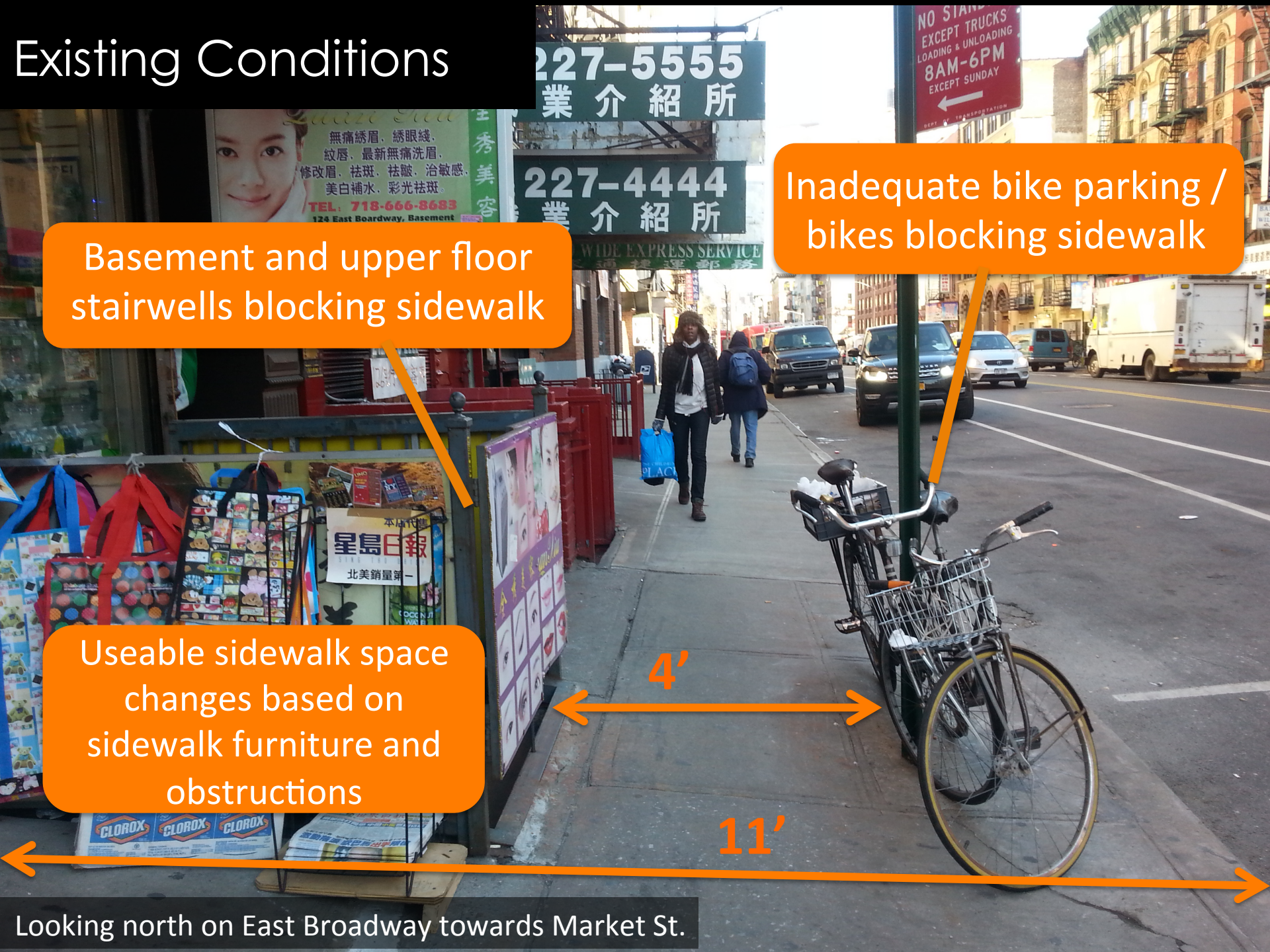
Basement and upper floor stairwells blocking sidewalk

Inadequate bike parking / bikes blocking sidewalk

Useable sidewalk space changes based on sidewalk furniture and obstructions



Looking north on East Broadway towards Market St.



Existing Conditions

Concentrated vendor activity and heavy delivery volumes

Sidewalk too narrow for pedestrian activity

East Broadway between Catherine and Market, (south side, looking west)



Existing Conditions



Film trailers blocking sidewalk and impeding pedestrian movement

East Broadway between Catherine and Market
(south side, looking east)

Existing Conditions

Long crossing distances,
poorly defined
crosswalks



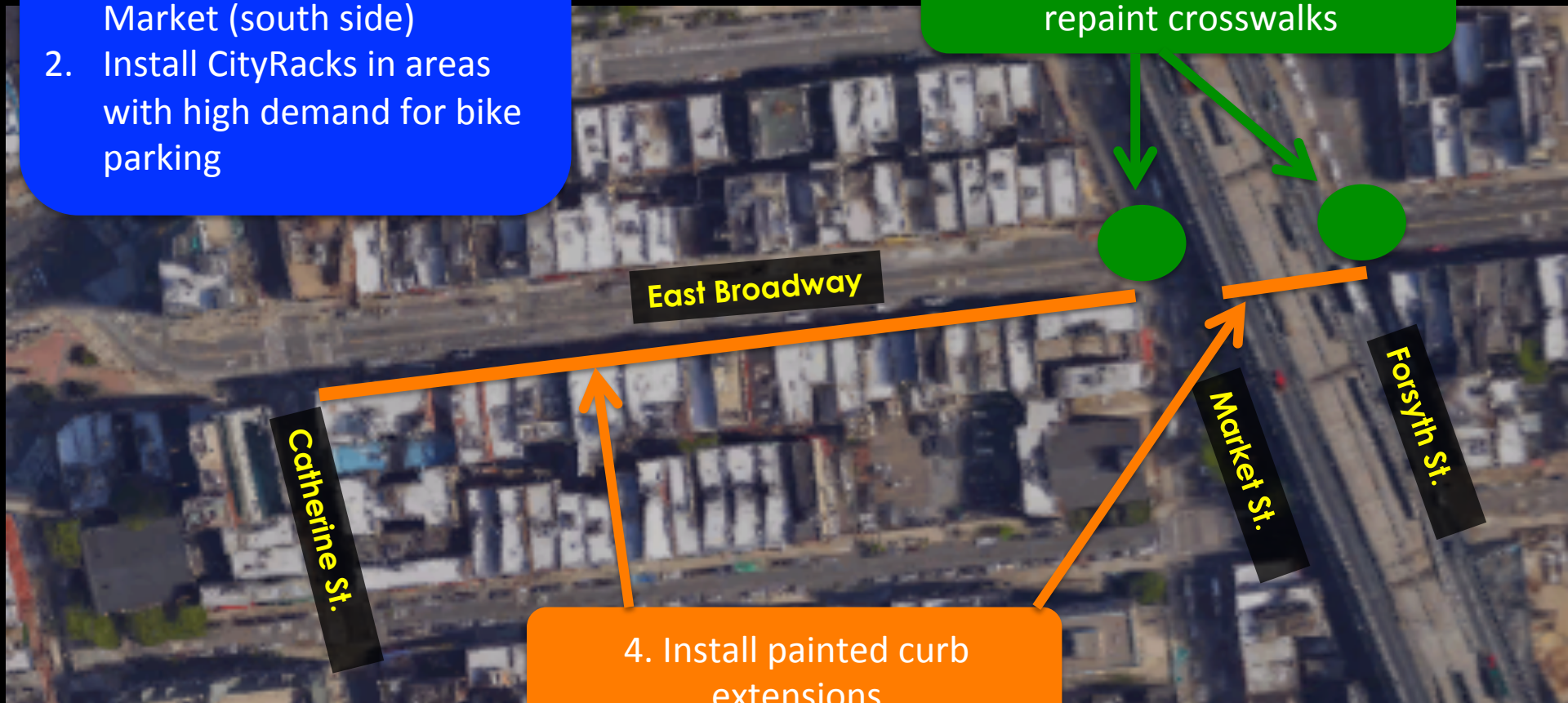
East Broadway at Eldridge St. / Forsyth St.
(northeast corner, looking south)

Proposal

1. Prohibit film trailer parking between Catherine & Market (south side)
2. Install CityRacks in areas with high demand for bike parking

3. Install bulb outs, "look" pavement markings, and repaint crosswalks

4. Install painted curb extensions



1. Film trailer parking restrictions between Catherine and Market (south side)

Improves pedestrian circulation on the most crowded block of East Broadway.



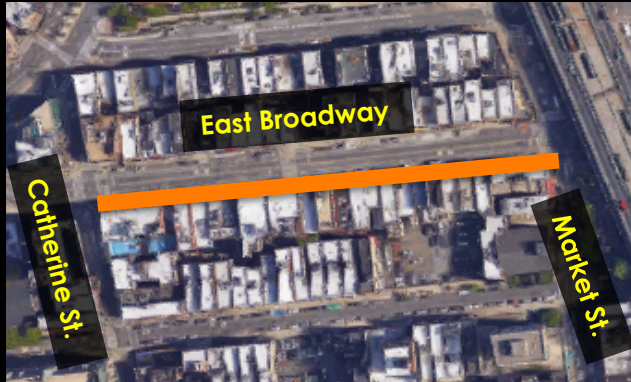
2. Install CityRacks in high demand areas

- Improves pedestrian movement by reducing sidewalk clutter
- Provides better, more secure parking options for bicyclists



3. Painted Curb Extensions: Market – Catherine (south side)

Proposal Area

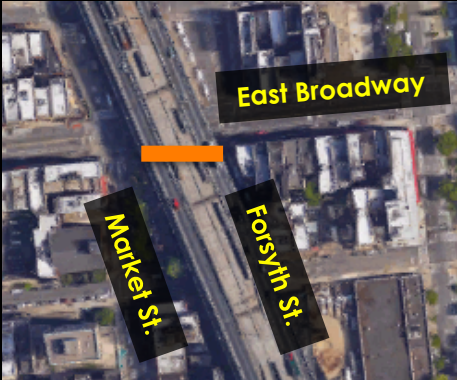


- Most heavily congested block of East Broadway
- High delivery volumes
- Concentration of vendor activity

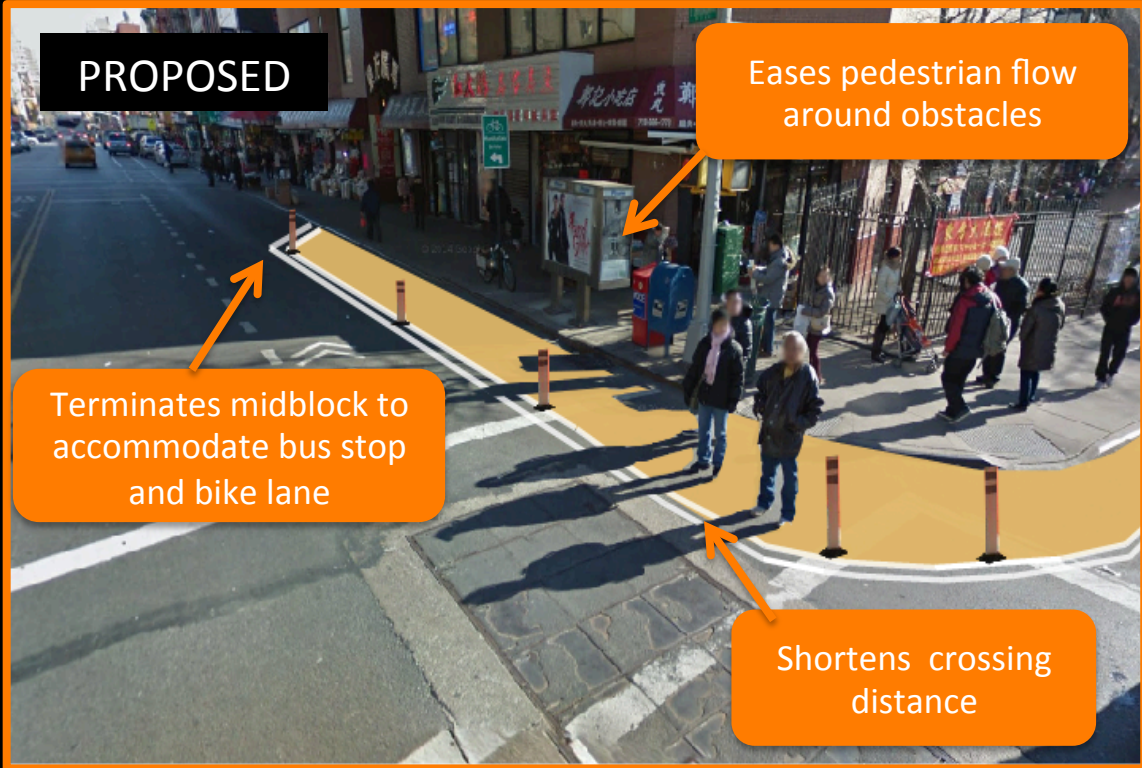


3. Painted Curb Extensions: Market – Forsyth (south side)

Proposal Area



- Heavily congested
- Poor pedestrian circulation
- Dangerous crossing conditions



3. Install bulb outs and “look” pavement markings, repaint crosswalks



Summary

1. Prohibit film trailer parking to improve pedestrian circulation
2. Install CityRacks to increase access to bike parking, reduce sidewalk clutter and improve pedestrian circulation
3. Install bulb outs, “look” pavement markings, and repaint crosswalks to enhance pedestrian safety
4. Install painted curb extensions to improve pedestrian circulation and provide new amenities

