

FORENSIC BIOLOGY PROTOCOLS FOR FORENSIC STR ANALYSIS

Quantifiler® Trio DNA Quantification Kit		
Status:Published		Document ID: 1153
DATE EFFECTIVE 09/05/2019	APPROVED BY Nuclear DNA Technical Leader	PAGE 1 OF 15

Quantifiler® Trio DNA Quantification Kit

1 LIMS Pre-Processing

- 1.1 In the *Analytical Testing* » *Test Batches* tram stop, select the appropriate quantitation assay and Click *Edit*.

NOTE: If you are creating a new quantitation test batch use the *New Test Batch* tram stop followed by the *Create New Test Batch* wizard. In that wizard, include the following information: description, functional group, analysis, batch configuration, and test batch type (case test batch).

- 1.2 If necessary, Click *Add Unknowns* and select any samples that need to be included on the test batch.

NOTE: Quanting exemplars and evidence samples may be done on the same plate; however, evidence extracts should be aliquoted into the plate before the exemplar samples. This precaution helps to prevent potential cross-contamination of exemplar extracts into evidence extracts.

- 1.3 Select All Input Samples » Click Add Output Sample » 🔍 » 1:1*» Click Select and Return » Click Ok » Click Create

- 1.3.1 * “1:1” signifies the dilution of the sample. Samples run at a 1:1 are being run neat. If a sample is scheduled for a dilution, assign the appropriate dilution (e.g., 1:10) when creating the output sample.

- 1.4 Select All Output Samples » Click Load Plate

- 1.5 In the *Load Plate* view, select all samples on the left side of the screen. Click on the next available well in the *Plate Layout* tab located on the right side of the screen.

- 1.6 Fill in the plate name » Click *Save* » Click *Return to List*

NOTE: Do not use a period (.) in the plate name. Use an underscore for plate naming.

- 1.7 If you have created the output samples and loaded the plate, you must fill out the *Performed By* tab indicating you completed *Batch Setup Review*.

- 1.7.1 Select Batch Setup Review » Click Fill Perform By/Date

- 1.7.2 Assign the Run Name by choosing the plate from the dropdown. Do not assign Analysis Set.

FORENSIC BIOLOGY PROTOCOLS FOR FORENSIC STR ANALYSIS

Quantifiler® Trio DNA Quantification Kit		
Status:Published		Document ID: 1153
DATE EFFECTIVE 09/05/2019	APPROVED BY Nuclear DNA Technical Leader	PAGE 2 OF 15

- 1.7.3 Click Save » Click Return to List
- 1.8 Select the test batch » Click Ready
- 1.9 When ready to perform a run, if not already in the test batch, go to the **Analytical Testing » Test Batches** tram stop, select the appropriate quantitation assay and click **Edit**
- 1.10 In the Performed By tab, select Trio Run task » click Fill Perform By/Date » click Save
- 1.11 Using the data and time listed in the **Performed By** tab, update the Description in the **main test batch** tab (located at the top of the page) with the following format:
- TU#Qdate.time (U# = instrument used)** [e.g. TU4Q012115.0815]
- 1.12 Click *Save*
- 1.13 In the **Plate/Analysis Set** tab, Select the Pre-Loaded Plate » **Click Load Plate**
- 1.14 Update the **Plate Name** to reflect the name listed in the **Description** field of the main **Test Batch** tab.
- 1.15 Click Save » click Download to Instrument.
- 1.16 In the **Instrument** tab, record the 7500 used for the quantitation assay.
- 1.17 If you are the analyst performing the quantitation assay, generate a **Test Batch Pick List Report** to help locate the samples needed in the laboratory.
- 1.17.1 Select the desired quantitation assay in the **Analytical Testing » Test Batches** tram stop
- 1.17.2 On the side bar, click Choose Report » Test Batch Pick List Report

2 Assay Preparation

- 2.1 Retrieve the following reagents:

Quantifiler® THP PCR Reaction Mix
Quantifiler® HP Primer Mix
Quantifiler® DNA Dilution Buffer
Quantifiler® THP DNA Standard (100ng/μL)

- 2.2 Retrieve samples needed for quantitation from associated refrigerator and/or freezer.

FORENSIC BIOLOGY PROTOCOLS FOR FORENSIC STR ANALYSIS

Quantifiler® Trio DNA Quantification Kit		
Status:Published		Document ID: 1153
DATE EFFECTIVE 09/05/2019	APPROVED BY Nuclear DNA Technical Leader	PAGE 3 OF 15

2.3 Record lot numbers in LIMS » Click **Save**

2.4 Calculate the master mix need for the assay in the *Reagents* tab: Select *Quantifiler® THP PCR Reaction Mix* and *Quantifiler® HP Primer Mix* » Click *Calculate Amount* » Click *Save*

2.5 Create the Standard Curve:

2.5.1 **Briefly centrifuge** Quantifiler® THP DNA Standard (100ng/μL) for no more than 3 seconds at no greater than 3000rpm.

2.5.2 Label tubes for the standard curve as follows. Include the date that the standard was made:

100ng/μL [date], 50 ng/μL [date], 5 ng/μL [date], 0.5 ng/μL [date], 0.05 ng/μL [date], 0.005 ng/μL [date], and NTC [date]

2.5.3 Add 10μL of Quantifiler® DNA Dilution Buffer to tubes 50 and NTC.

2.5.4 Add **90μL** of Quantifiler® DNA Dilution Buffer to tubes **5, 0.5, 0.05, and 0.005**.

2.5.5 Standards may be stored in a refrigerator and used for up to **two (2) weeks**. If you are making a standard curve for 2 assays, record the following information on the rack containing the standard curve tubes:

- Name
- Date
- Lot numbers of the Quantifiler Standard and Dilution Buffer (labels containing lot numbers may be printed from LIMS via the Reagent Tram stop)

NOTE: Each standard must be thoroughly mixed prior to the next step. Standards should be mixed by vortexing and briefly centrifuging for no more than 3 seconds at no greater than 3000rpm.

2.5.6 To make standards for one (1) assay:

- Aliquot **16μL** from the Quantifiler® THP DNA Standard (100ng/μL) into the **100ng/μL** tube.
- Add **10μL** from the **100ng/μL** tube to the **50ng/μL** tube, thoroughly mix contents.
- Add **10μL** from the **50ng/μL** tube to the **5ng/μL** tube, thoroughly mix contents.

Controlled versions of Department of Forensic Biology Manuals only exist in the Forensic Biology Qualtrax software. All printed versions are non-controlled copies.

© NYC OFFICE OF CHIEF MEDICAL EXAMINER

FORENSIC BIOLOGY PROTOCOLS FOR FORENSIC STR ANALYSIS

Quantifiler® Trio DNA Quantification Kit		
Status:Published		Document ID: 1153
DATE EFFECTIVE 09/05/2019	APPROVED BY Nuclear DNA Technical Leader	PAGE 4 OF 15

- Add **10µL** from the **5ng/µL** tube to the **0.5ng/µL** tube, thoroughly mix contents.
- Add **10µL** from the **0.5ng/µL** tube to the **0.05ng/µL** tube, thoroughly mix contents.
- Add **10µL** from the **0.05ng/µL** tube to the **0.005ng/µL** tube, thoroughly mix contents.

2.5.7 To make standards for two (2) assays:

- Aliquot **20µL** from the Quantifiler® THP DNA Standard (100ng/µL) into the **100ng/µL** tube.
- Add **10µL** from the **100ng/µL** tube to the **50ng/µL** tube, thoroughly mix contents.
- Add **10µL** from the **50ng/µL** tube to the **5ng/µL** tube, thoroughly mix contents.
- Add **10µL** from the **5ng/µL** tube to the **0.5ng/µL** tube, thoroughly mix contents.
- Add **10µL** from the **0.5ng/µL** tube to the **0.05ng/µL** tube, thoroughly mix contents.
- Add **10µL** from the **0.05ng/µL** tube to the **0.005ng/µL** tube, thoroughly mix contents.

2.6 Prepare dilutions of extracted samples if necessary. The Quantifiler® DNA Dilution Buffer should be used to make the dilutions. Vortex and centrifuge samples prior to aliquoting for dilution.

2.7 **Vortex** all standards, extracted samples and NTC. **Briefly centrifuge** for no more than 3 seconds at no greater than 3000rpm.

2.8 Arrange samples in the order as they appear on the plate loading screen in LIMS in a vertical fashion starting at A1 down to A8 continuing at B1.

2.9 **Witness step:** Confirm the sample names and order on the documentation by reading the tube-top label and complete INPUT sample ID, also the tube top labels should be re-witnessed at the load plate screen. For Zygem samples in 0.2ml tubes, the witness will only need to confirm the tube label on the side of the tube.

2.9.1 Have witness fill out **Witness** tab in LIMS.

FORENSIC BIOLOGY PROTOCOLS FOR FORENSIC STR ANALYSIS

Quantifiler® Trio DNA Quantification Kit		
Status: Published		Document ID: 1153
DATE EFFECTIVE 09/05/2019	APPROVED BY Nuclear DNA Technical Leader	PAGE 5 OF 15

2.10 **Gently vortex** Quantifiler® THP PCR Reaction Mix and Quantifiler® HP Primer Mix and **briefly centrifuge** for no more than 3 seconds at no greater than 3000rpm.

2.11 Prepare master mix as calculated by LIMS in a new tube.

NOTE: If the calculated master mix volume is $\geq 1400\mu\text{L}$, use a 2.0mL dolphin tube for preparation.

2.12 **Gently vortex** and **briefly centrifuge** freshly made master mix for no more than 3 seconds at no greater than 3000rpm.

2.13 Aliquot **18 μL** of prepared master mix in each of the appropriate wells of a new Applied Biosystems® MicroAmp® Optical 96-Well Reaction Plate.

NOTE: For every 16 wells (i.e. 2 columns) **gently vortex** the master mix and **briefly centrifuge** for no more than 3 seconds at no greater than 3000rpm.

2.14 Aliquot **2 μL** of each sample, including standards, NTC and extracted samples to the assigned well.

2.15 **Seal** the reaction plate using either Optical Adhesive Film.

NOTE: When using the Optical Adhesive Film, use a straight edge or tube opener to eliminate bubbles which may otherwise interfere with detection.

2.16 **Centrifuge** sealed reaction plate for 1 minute at 3000rpm

NOTE: Check plate prior to loading on to instrument. If bubbles are still seen in the wells, repeat step 2.16 until they are no longer present.

3 Software Operations

3.1 Turn on the Applied BioSystems® 7500 Real-Time PCR System. Allow time for instrument to warm up.

3.2 Press the tray door to open and load plate on the instrument.

NOTE: Plate is correctly aligned when position A12 is in the top right corner of the tray.

3.3 Close the tray door by pushing the depressed imprint on the right side of the tray. Do not push from the center.

3.4 Double click icon HID Real-Time PCR Analysis Software v1.2.

3.5 Click *Quantifiler® Trio icon* located in the upper left corner of the screen.

3.6 Inside the Experiment Menu on the left side of the screen, click **Setup » Experiment Properties**.

Controlled versions of Department of Forensic Biology Manuals only exist in the Forensic Biology Qualtrax software. All printed versions are non-controlled copies.

FORENSIC BIOLOGY PROTOCOLS FOR FORENSIC STR ANALYSIS

Quantifiler® Trio DNA Quantification Kit		
Status:Published		Document ID: 1153
DATE EFFECTIVE 09/05/2019	APPROVED BY Nuclear DNA Technical Leader	PAGE 6 OF 15

- 3.7 Enter run name into the top most field labeled Experiment Name.
- 3.8 Click Setup » Plate Setup » Assign Targets and Samples.
- 3.9 To import samples, click **File » Import**. Locate file in the LIMS file share folder. Click **Start Import**

NOTE: A warning will come up indicating you current plate set-up will be lost. Click **Yes**

- 3.10 Plate set-up imported successfully » click **OK**
- 3.11 Check the top header and ensure the following:
 - **Experiment Name:** Current Run Name
 - **Type:** HID Standard Curve
 - **Kit Name:** Quantifiler® Trio
 - PCR Conditions for Quantifiler® Trio:

7500 Quantifiler Trio®	The Quantifiler file is as follows: Holding stage: 95°C for 2 minutes :Denature at 95°C for 9 seconds 40 cycles :Annealing at 60°C for 30 seconds
-------------------------------	--

- 3.12 Click **Start Run**. Run time is ~1 hour.
 - 3.13 Turn the instrument off when the run is complete.
- ## 4 Exporting Results
- 4.1 Open HID Real-Time PCR Analysis Software v1.2 on the desktop, if needed.
 - 4.2 If the assay that needs analysis is not currently open, click **File » Open**. Navigate to desired file, select the file, and click **Open**.
 - 4.3 In the **Experiment Menu** located on the left side of the screen, click **Analysis**.
 - 4.4 In the **Analysis** tab on the top right side of the screen, click **Analysis Settings » C_T Settings**

Controlled versions of Department of Forensic Biology Manuals only exist in the Forensic Biology Qualtrax software. All printed versions are non-controlled copies.

FORENSIC BIOLOGY PROTOCOLS FOR FORENSIC STR ANALYSIS

Quantifiler® Trio DNA Quantification Kit		
Status:Published		Document ID: 1153
DATE EFFECTIVE 09/05/2019	APPROVED BY Nuclear DNA Technical Leader	PAGE 7 OF 15

4.5 Verify the settings below and click **Cancel**

Target	Threshold	Baseline Start	Baseline End
T. IPC	0.1	3	15
T. Large Autosomal	0.2	3	15
T. Small Autosomal	0.2	3	15
T. Y	0.2	3	15

4.6 Click Analyze

4.7 After analysis, results can be exported. Click View Plate Layout » Highlight All Wells.

4.8 Located on the top toolbar, click **Export**

4.8.1 Select data to export » **Results**

4.8.2 Select one file or separate files » **One File**

4.8.3 Ensure the correct file name

4.8.4 In the Custom Export tab check the data is exporting columns (A1, B1, etc.)

4.8.5 Click Start Export

4.9 With all wells still highlighted, click **Print Report** located on the top toolbar. Select **All Report Types**.

4.10 Click **Print** and chose to save as a **.PDF**. Ensure the correct run name is listed. **Add reports** to the end of the file name.

4.11 Save file in appropriate LIMS folder and **Click Save**.

4.12 Transfer the raw data .EDS files from the instrument PC to the Forensic Biology network drive. These files should be saved in the respective instrument folders that are in the “Quant Trio” folder.

5 LIMS Post Processing I

5.1 If not already in the test batch, go to the **Analytical Testing » Test Batches** tram stop, select the appropriate quantitation assay and click **Edit**

5.2 In the **Attachments** tab located at the bottom of the page, attach **.PDF** file for the associated test batch.

5.3 In the Performed By tab, select Trio Run Review Task » click Fill Perform By/Date » click Save

Controlled versions of Department of Forensic Biology Manuals only exist in the Forensic Biology Qualtrax software. All printed versions are non-controlled copies.

© NYC OFFICE OF CHIEF MEDICAL EXAMINER

FORENSIC BIOLOGY PROTOCOLS FOR FORENSIC STR ANALYSIS

Quantifiler® Trio DNA Quantification Kit		
Status:Published		Document ID: 1153
DATE EFFECTIVE 09/05/2019	APPROVED BY Nuclear DNA Technical Leader	PAGE 8 OF 15

- 5.4 Check the remaining tabs to ensure all have been filled out properly.
- 5.5 In the Plate/Analysis Set tab, select the Trio Run » click Data Entry
- 5.6 In the **Data Entry** screen, click **Import Instrument Data***. Locate file in the LIMS fileshare folder by clicking **Browse**; Once found click **OK**
- 5.7 If a sample was quanted at a dilution, manually enter the dilution in the Data Entry screen.
- 5.8 Click Save

6 Interpretation

- 6.1 Use the reports generated and the data imported into LIMS to interpret the results for each assay.
 - 6.1.1 Using the standard curve reports, ensure the following parameters are met for targets **T.Y.**, **T. Large Autosomal**, and **T. Small Autosomal** and record the **slope**, **Y-Intercept**, and **R²** value. In LIMS, record the **QCBatch Params** located at the top of the screen. Make sure to *release* and *save* all data stored in the **QCBatch Params** tab:
 - Standard Slope must be between **-3.0** to **-3.6**
 - R² values must be **≥ 0.98**
 - the Y-Intercept value must be between **≥ 24.5** and **≤ 29.5**
- 6.2 All three targets must pass the above quality criteria in order for the quantitation to pass. Indicate “Pass” or “Fail” in the QC Batch Parameters.
- 6.3 All samples and controls should be reviewed to ensure that the data makes sense in the context of the samples being tested.
- 6.4 If the quantitation assay fails, the assay must be re-done. **Notify QA/QC if the repeating quantitation assays fails.**
- 6.5 To confirm that data was imported correctly, use the data entry screen in the LIMS test batch to ensure that all standards are listed in the correct order.
- 6.6 Check the “QC Summary” flagging guide at the end of the Quant Trio pdf. report. Follow the resolution column under Section 8 of this manual if a sample is flagged.
- 6.7 Negative controls, including extraction negatives, microcon negatives, and the NTC associated with the quantitation assay must be **≤ 0.2pg/μL**. Indicated “Pass” or “Fail” in the interpretation column for the NTC; do not use for extraction negatives.

Controlled versions of Department of Forensic Biology Manuals only exist in the Forensic Biology Qualtrax software. All printed versions are non-controlled copies.

FORENSIC BIOLOGY PROTOCOLS FOR FORENSIC STR ANALYSIS

Quantifiler® Trio DNA Quantification Kit		
Status:Published		Document ID: 1153
DATE EFFECTIVE 09/05/2019	APPROVED BY Nuclear DNA Technical Leader	PAGE 9 OF 15

- 6.7.1 The quantitation value is determined only by the small autosomal target.
- 6.7.2 If there is a value shown only in the Y target and no value in the small autosomal under non-inhibitory conditions, the Y target value is not an indication of true DNA.
- 6.7.3 If there is a value shown only in the Y target and no value in the small autosomal under inhibitory conditions, control should be re-quantified.
- 6.7.4 If the NTC associated with the quantitation assay fails, the entire assay must be re-done. **Notify QA/QC if the repeating quantitation assays fails.**
- 6.7.5 If a negative control yields a value $> 0.2 \text{ pg}/\mu\text{L}$, that negative control must be quantified a second time. If the control fails after two successive quantitation assays, then associated extraction/microcon assay fails.
- 6.7.5.1 Negative controls yielding high quantitation values should be evaluated to determine if there is a possible issue with the samples or assay (e.g. a sample switch).
- 6.8 IPC (internal positive control) is used to determine if inhibition is present within a sample. Use the following criteria to determine if inhibition is present.
- No inhibition:** 26 to 29
Low inhibition: < 26 to 24 or > 29 to 31
High Inhibition: < 24 or > 31 or blank
- 6.8.1 If the sample is not being requant for high quant value and inhibition is present, it **must** be noted in LIMS in the *Interpretation* column of the *Data Entry* tab for that associated sample.
- NOTE: Inhibition is to be documented only for unknown samples. As per the Quantifiler® HP and Trio DNA Quantification Kits User Guide, IPC flagging in the standards is not due to inhibition but is rather due to the competition between the human and/or male specific and IPC reactions.
- 6.9 Degradation index is used to determine if the sample exhibits signs of degradation. Use the following criteria to determine if degradation is present. If high degradation is present, and the sample is not being requant for high quant value, it must be noted in LIMS in the *Interpretation* column of the *Data Entry* tab for the associated sample.
- No degradation:** < 1
Low Degradation: 1 to 10
High Degradation: > 10 or blank

FORENSIC BIOLOGY PROTOCOLS FOR FORENSIC STR ANALYSIS

Quantifiler® Trio DNA Quantification Kit		
Status:Published		Document ID: 1153
DATE EFFECTIVE 09/05/2019	APPROVED BY Nuclear DNA Technical Leader	PAGE 10 OF 15

NOTE: A “blank” value in the degradation column does not always indicate high degradation. If a sample contains a “blank” degradation value under non-inhibitory conditions, this typically indicates a very low or negative quantitation result (for example, extraction negatives often produce a “blank” value in the degradation column).

6.10 After the quality for each sample is assessed, determine if further testing is necessary.

6.10.1 If a sample is being sent for microcon or re-quantitation it must be noted in LIMS in the *Interpretation* column of the **Data Entry** tab for the associated sample:

6.10.1.1 Consider microconning a sample if it exhibits high inhibition or high degradation. Discuss with a supervisor to determine if microconning is necessary.

6.11 The Small Autosomal quantitation value must be used for samples sent for autosomal STR amplification.

6.12 The Y quantitation value must be used for samples sent to Y-STR amplification.

6.13 Regarding samples to be amplified in PowerPlex Fusion®, if a male/female mixture is indicated and the ratio of M:F DNA is more extreme than 1:50 (i.e., 1:75), that sample should not be amplified using Fusion initially if the male component is the target profile. Such samples may be sent directly for YSTR testing, but must first be evaluated on whether or not YSTR testing is needed.

7 Interpretation of Zygem Results

7.1 If male DNA positive swabs or stains were found, be mindful that the primary goal in the majority of cases (especially stranger cases) is to develop a database eligible profile. This may be achieved by a single sample in a single assailant case. For single assailant cases, no more than two samples will routinely proceed to amplification.

7.2 Zygem lysates may be amplified directly if the samples are greater than or equal to 80% male and meet the minimum DNA concentration for amplification or have at least a 1:4 Male to Female ratio and are at least 70pg/ul (thereby having the potential to amplify between 525 and 750pg of DNA). If these thresholds are not met, the samples within a case may be triaged and recut for extraction. See below for guidelines on the cutting of samples for extraction.

7.2.1 Following Zygem lysis, evaluate the concentrations of autosomal and male DNA as well as the M:F ratio of the body swabs (dried secretions, oral, perianal, anal, vulvar, vaginal/penile, cervical) to see if samples can go direct to amp.

7.2.2 If no swabs were Male positive or could be submitted for direct to amp, evaluate the results of the underwear (if applicable).

Controlled versions of Department of Forensic Biology Manuals only exist in the Forensic Biology Qualtrax software. All printed versions are non-controlled copies.

FORENSIC BIOLOGY PROTOCOLS FOR FORENSIC STR ANALYSIS

Quantifiler® Trio DNA Quantification Kit		
Status:Published		Document ID: 1153
DATE EFFECTIVE 09/05/2019	APPROVED BY Nuclear DNA Technical Leader	PAGE 11 OF 15

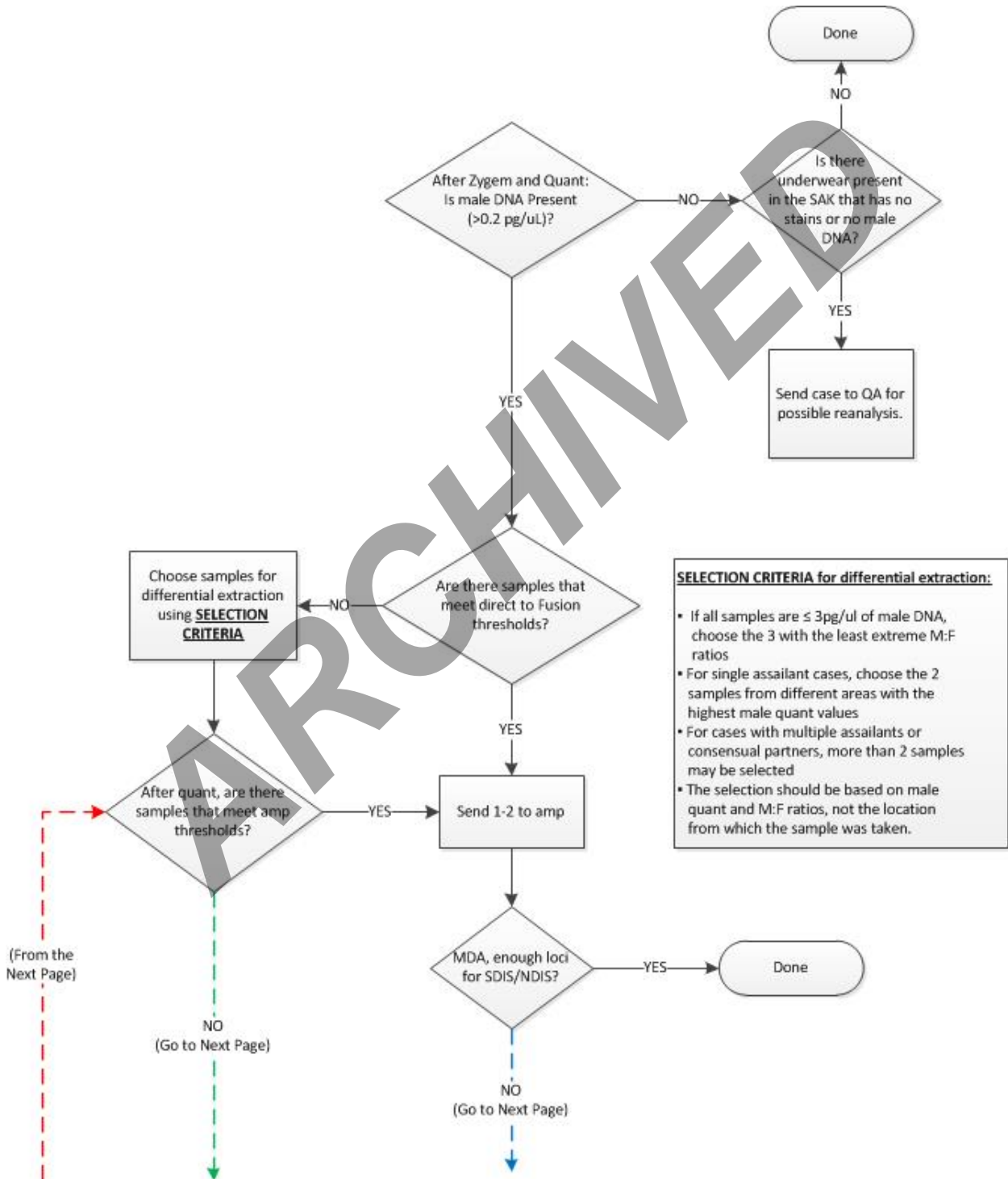
- 7.2.3 If no Male positive samples were sent direct to amp, select two swabs with the highest concentration of male DNA from different body areas for recut for the appropriate extraction; i.e choose one dried secretion swab and one vulvar/vaginal/cervical and/or perianal/anal if all are positive. If dried secretions swabs and orifice swabs have approximately the same concentration of male DNA, choose one orifice swab and one dried secretions swab; not two dried secretions swabs. Refer to the flowchart below for triage instructions. If all samples have male concentrations less than or equal to 3 pg/ul, choose the 3 with the least extreme ratio of male DNA compared to female DNA. For example, a M:F ratio of 1:2 is less extreme than a M:F ratio of 1:50. Cases may be triaged differently depending upon the number of alleged assailants.

ARCHIVED

FORENSIC BIOLOGY PROTOCOLS FOR FORENSIC STR ANALYSIS

Quantifiler® Trio DNA Quantification Kit		
Status: Published		Document ID: 1153
DATE EFFECTIVE 09/05/2019	APPROVED BY Nuclear DNA Technical Leader	PAGE 12 OF 15

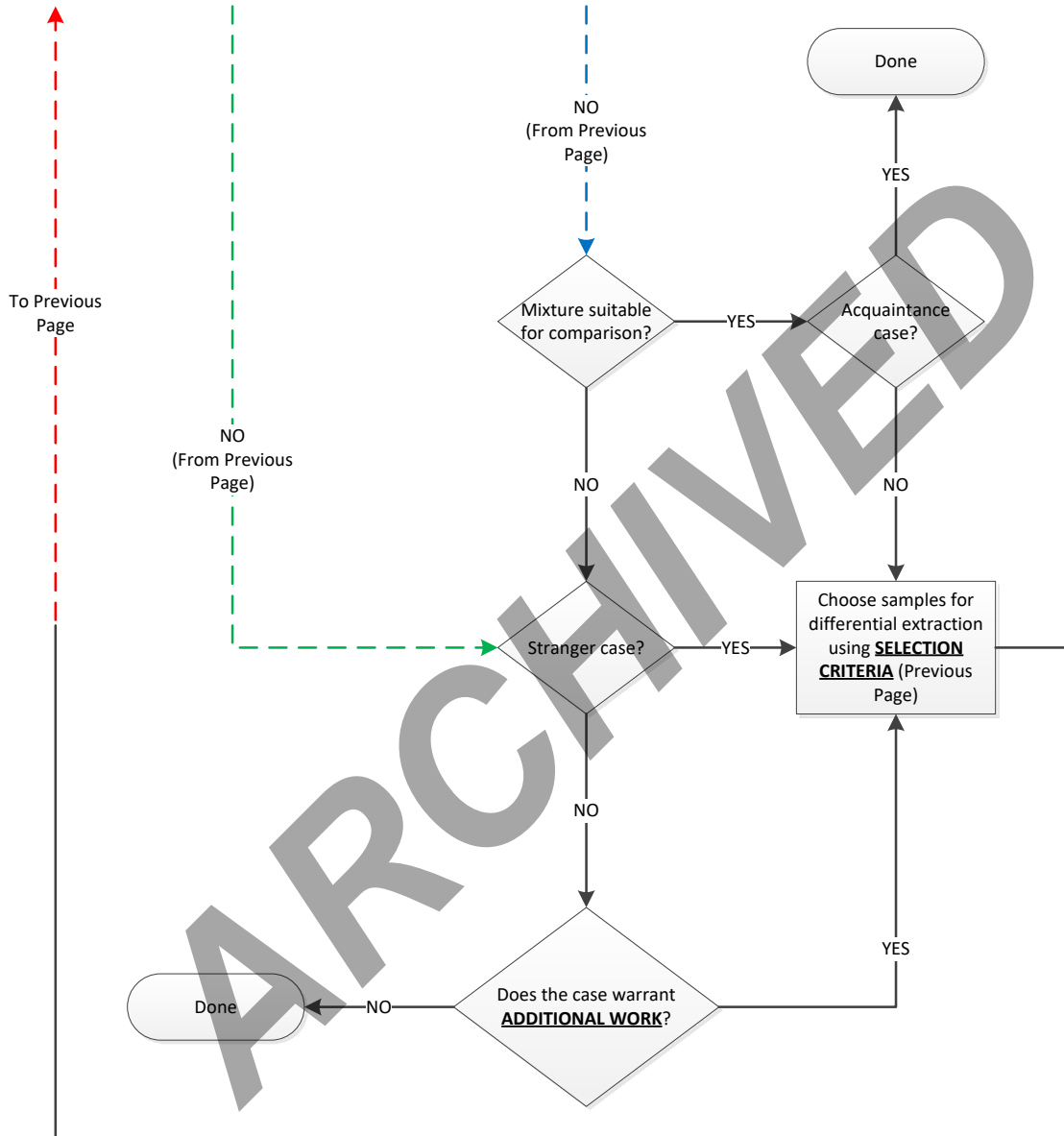
Post Zygem Analysis Flow Chart



Controlled versions of Department of Forensic Biology Manuals only exist in the Forensic Biology Qualtrax software. All printed versions are non-controlled copies.

FORENSIC BIOLOGY PROTOCOLS FOR FORENSIC STR ANALYSIS

Quantifiler® Trio DNA Quantification Kit		
Status:Published		Document ID: 1153
DATE EFFECTIVE 09/05/2019	APPROVED BY Nuclear DNA Technical Leader	PAGE 13 OF 15



ADDITIONAL WORK? Here are some criteria to consider:

- Is Y STR testing feasible?
- Check Demp for conferrals & additional evidence (could additional evidence items be more likely to yield results?)
- Evaluate if STR results make sense based on quant and M:F ratios
- Determine if there are multiple assailants or consensual partners

FORENSIC BIOLOGY PROTOCOLS FOR FORENSIC STR ANALYSIS

Quantifiler® Trio DNA Quantification Kit		
Status:Published		Document ID: 1153
DATE EFFECTIVE 09/05/2019	APPROVED BY Nuclear DNA Technical Leader	PAGE 14 OF 15

8. QC SUMMARY FLAGGING GUIDE		
Flag	Reason	Resolution
AMPNC	Not Used	-
BADROX	No Master Mix Added	Requant
BLFAIL	Not Used	-
CTFAIL	Not Used	-
EXPFAIL	Not Used	-
HIGHQT	Quant Value >99ng/μL	If SA value is >99ng/μL: for Zygem samples that are <0.2 pg/ μL of Male DNA, a requant is not required; all other samples must be requanted. If Male (Y) value is >99ng/ μL, a requant is required if the sample is going to Y-STR amplification. If LA value is >99ng/ul, a requant is not necessary.
HIGHSD	Not Used	-
IPPCT	IPC <26 or >29	Determine rate of inhibition
LOWQT	Not Used	-
MTFR	M:F more extreme than 1:50 where male DNA is the target of interest	Sample should not be amplified using Fusion; May send sample directly to Yfiler™, if necessary
NOAMP	Not Used	-
NOISE	Sample Not Spun Down	Requant
	Improper Seal	
	Condensation	
	Pipetting errors	
NOSIGNAL	Not Used	-
OFFSCALE	Fluorescent Contaminant	Notify QA/QC
OUTLIERRG	Not Used	-
R²	R² <0.98	Quant Assay Fails
Slope	Slope <-3.0 or >-3.6	Quant Assay Fails
Spike	Bubbles	Requant
	Seal leak	
THOLDFAIL	Not Used	-
YINT	Not Used	-

Notify QA/QC immediately if any of the flags that are not used give a value other "0".

FORENSIC BIOLOGY PROTOCOLS FOR FORENSIC STR ANALYSIS

Quantifiler® Trio DNA Quantification Kit		
Status:Published		Document ID: 1153
DATE EFFECTIVE 09/05/2019	APPROVED BY Nuclear DNA Technical Leader	PAGE 15 OF 15

8 LIMS Post Processing II

- 8.1 After all interpretations are made, in the **Select Drop Down** » **Unreleased** » Click the Release Icon » Click **Save**.
- 8.2 In order to send the quantitation values for amplification, hold the **Ctrl** key and **Select the Quant Value** applied for each sample by **Clicking the Row**.
- 8.3 To push the Total Concentration (SA concentration), highlight all the applicable samples and click **[Push Concentration]**. The screen will refresh and list a value in the **Concentration** Column.
- 8.4 To push the Total Male Concentration, (T.Y.) highlights all applicable samples and click **[Push Male Concentration]**.
- 8.5 In the Select Drop Down » Select **All** » Click **Test Approval**.
- 8.6 Click the Green Check Button in the **Status** column.
- 8.7 Assign the appropriate next process steps for each sample.
- 8.8 Click **Save** » Fill in E-Sig » Click **OK** » Click **Close**