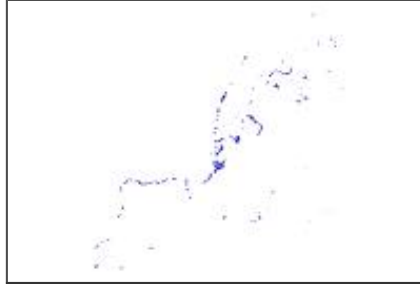


Priority Marine Activity Zones (PMAZ)

File Geodatabase Feature Class



Tags

PMAZ, waterfront, WRP, Priority Marine Activity Zone

Summary

The Priority Marine Activity Zones (PMAZs) are a special area designation of the NYC Waterfront Revitalization Program.

Description

This map shows the Priority Marine Activity Zones (PMAZs). As defined and mapped in the Waterfront Revitalization Program, PMAZs are special area designation that assist WRP consistency review. The PMAZs are areas with concentrations of waterborne transportation uses and important nodes that support the city's waterborne transportation and maritime activities. These areas are characterized by shorelines used for vessel docking, berthing, or tie-up, and where the maritime infrastructure, such as bulkheads, docks, piers, and fendering, is designed to support such uses.

Credits

New York City Department of City Planning, Waterfront and Open Space Division

Use limitations

The Department of City Planning makes no representation as to the accuracy of the information or its suitability for any purposes. The Department and the City disclaim any liability for errors that may be contained herein.

Extent

West -74.251583 **East** -73.766372
North 40.890133 **South** 40.512668

Scale Range

Maximum (zoomed in) 1:5,000
Minimum (zoomed out) 1:150,000,000

ArcGIS Metadata ▶

Topics and Keywords ▶

* CONTENT TYPE Downloadable Data

[Hide Topics and Keywords ▲](#)

Citation ▶

TITLE Priority Marine Activity Zones (PMAZ)

PRESENTATION FORMATS * digital map

[Hide Citation ▲](#)

Citation Contacts ▶

RESPONSIBLE PARTY

INDIVIDUAL'S NAME Waterfront and Open Space Division

ORGANIZATION'S NAME New York City Department of City Planning

CONTACT'S ROLE publisher

CONTACT INFORMATION ▶

ADDRESS

TYPE both

DELIVERY POINT 120 Broadway, 31st Floor

CITY New York

ADMINISTRATIVE AREA NY

POSTAL CODE 10271

COUNTRY US

E-MAIL ADDRESS wrp@planning.nyc.gov

[Hide Contact information ▲](#)

[Hide Citation Contacts ▲](#)

Resource Details ▶

DATASET LANGUAGES * English (UNITED STATES)

SPATIAL REPRESENTATION TYPE * vector

PROCESSING ENVIRONMENT Esri ArcGIS 10.3.1.4959

CREDITS

New York City Department of City Planning, Waterfront and Open Space Division

ARCGIS ITEM PROPERTIES

* NAME PMAZ

LOCATION withheld

* ACCESS PROTOCOL Local Area Network

[Hide Resource Details ▲](#)

Extents ►

EXTENT

GEOGRAPHIC EXTENT

BOUNDING RECTANGLE

EXTENT TYPE Extent used for searching

* WEST LONGITUDE -74.251583

* EAST LONGITUDE -73.766372

* NORTH LATITUDE 40.890133

* SOUTH LATITUDE 40.512668

* EXTENT CONTAINS THE RESOURCE Yes

EXTENT IN THE ITEM'S COORDINATE SYSTEM

* WEST LONGITUDE 914689.535107

* EAST LONGITUDE 1048845.871124

* SOUTH LATITUDE 126154.602728

* NORTH LATITUDE 263577.510296

* EXTENT CONTAINS THE RESOURCE Yes

[Hide Extents ▲](#)

Resource Points of Contact ►

POINT OF CONTACT

INDIVIDUAL'S NAME Waterfront and Open Space Division

ORGANIZATION'S NAME New York City Department of City Planning

CONTACT'S ROLE publisher

CONTACT INFORMATION ►

ADDRESS

TYPE both

DELIVERY POINT 120 Broadway, 31st Floor

CITY New York

ADMINISTRATIVE AREA NY

POSTAL CODE 10271

COUNTRY US

E-MAIL ADDRESS wrp@planning.nyc.gov

[Hide Contact information ▲](#)

[Hide Resource Points of Contact ▲](#)

Resource Maintenance ►

RESOURCE MAINTENANCE

UPDATE FREQUENCY as needed

[Hide Resource Maintenance ▲](#)

Resource Constraints ►

CONSTRAINTS

LIMITATIONS OF USE

The Department of City Planning makes no representation as to the accuracy of the information or its suitability for any purposes. The Department and the City disclaim any liability for errors that may be contained herein.

[Hide Resource Constraints ▲](#)

Spatial Reference ►

ARCGIS COORDINATE SYSTEM

* TYPE Projected

* GEOGRAPHIC COORDINATE REFERENCE GCS_North_American_1983

* PROJECTION NAD_1983_StatePlane_New_York_Long_Island_FIPS_3104_Feet

* COORDINATE REFERENCE DETAILS

PROJECTED COORDINATE SYSTEM

WELL-KNOWN IDENTIFIER 102718

X ORIGIN -120039300

Y ORIGIN -96540300

XY SCALE 3048.0060960121914

Z ORIGIN -100000

Z SCALE 10000

M ORIGIN -100000

M SCALE 10000

XY TOLERANCE 0.0032808333333333335

Z TOLERANCE 0.001

M TOLERANCE 0.001

HIGH PRECISION true

LATEST WELL-KNOWN IDENTIFIER 2263

WELL-KNOWN TEXT PROJCS

```
["NAD_1983_StatePlane_New_York_Long_Island_FIPS_3104_Feet",GEOGCS
["GCS_North_American_1983",DATUM["D_North_American_1983",SPHEROID
["GRS_1980",6378137.0,298.257222101]],PRIMEM["Greenwich",0.0],UNIT
["Degree",0.0174532925199433]],PROJECTION["Lambert_Conformal_Conic"],PARAMETER
["False_Easting",984250.0],PARAMETER["False_Northing",0.0],PARAMETER
["Central_Meridian",-74.0],PARAMETER
["Standard_Parallel_1",40.66666666666666],PARAMETER
["Standard_Parallel_2",41.03333333333333],PARAMETER
["Latitude_Of_Origin",40.16666666666666],UNIT
["Foot_US",0.3048006096012192],AUTHORITY["EPSG",2263]]
```

REFERENCE SYSTEM IDENTIFIER

* VALUE 2263

* CODESPACE EPSG

* VERSION 8.6.2

[Hide Spatial Reference ▲](#)

Spatial Data Properties ►

VECTOR ►

* LEVEL OF TOPOLOGY FOR THIS DATASET geometry only

GEOMETRIC OBJECTS

FEATURE CLASS NAME PMAZ

* OBJECT TYPE composite

* OBJECT COUNT 201

[Hide Vector ▲](#)

ARCGIS FEATURE CLASS PROPERTIES ►

FEATURE CLASS NAME PMAZ

- * FEATURE TYPE Simple
- * GEOMETRY TYPE Polyline
- * HAS TOPOLOGY FALSE
- * FEATURE COUNT 201
- * SPATIAL INDEX TRUE
- * LINEAR REFERENCING FALSE

[Hide ArcGIS Feature Class Properties ▲](#)

[Hide Spatial Data Properties ▲](#)

Distribution ►

DISTRIBUTION FORMAT

- * NAME File Geodatabase Feature Class

[Hide Distribution ▲](#)

Fields ►

DETAILS FOR OBJECT PMAZ ►

- * TYPE Feature Class
- * ROW COUNT 201

FIELD OBJECTID ►

- * ALIAS OBJECTID
- * DATA TYPE OID
- * WIDTH 4
- * PRECISION 0
- * SCALE 0
- * FIELD DESCRIPTION
Internal feature number.

- * DESCRIPTION SOURCE
Esri

- * DESCRIPTION OF VALUES
Sequential unique whole numbers that are automatically generated.

[Hide Field OBJECTID ▲](#)

FIELD Shape ►

- * ALIAS Shape
- * DATA TYPE Geometry
- * WIDTH 0
- * PRECISION 0
- * SCALE 0

- * FIELD DESCRIPTION
Feature geometry.
- * DESCRIPTION SOURCE
ESRI
- * DESCRIPTION OF VALUES
Coordinates defining the features.

Hide Field Shape ▲

FIELD Shape_STLength__ ►

- * ALIAS Shape_STLength__
- * DATA TYPE Double
- * WIDTH 8
- * PRECISION 0
- * SCALE 0

Hide Field Shape_STLength__ ▲

FIELD Shape_Length ►

- * ALIAS Shape_Length
- * DATA TYPE Double
- * WIDTH 8
- * PRECISION 0
- * SCALE 0
- * FIELD DESCRIPTION
Length of feature in internal units.
- * DESCRIPTION SOURCE
Esri
- * DESCRIPTION OF VALUES
Positive real numbers that are automatically generated.

Hide Field Shape_Length ▲

Hide Details for object PMAZ ▲

Hide Fields ▲

Metadata Details ►

- * METADATA LANGUAGE English (UNITED STATES)
- SCOPE OF THE DATA DESCRIBED BY THE METADATA * dataset
- SCOPE NAME * dataset
- * LAST UPDATE 2016-07-22

ARCGIS METADATA PROPERTIES

METADATA FORMAT **ArcGIS 1.0**
STANDARD OR PROFILE USED TO EDIT METADATA **FGDC**

CREATED IN ARCGIS FOR THE ITEM **2013-06-07 16:23:24**
LAST MODIFIED IN ARCGIS FOR THE ITEM **2016-07-22 11:36:47**

AUTOMATIC UPDATES

HAVE BEEN PERFORMED **Yes**
LAST UPDATE **2016-07-22 11:36:47**

PUBLISHED TO AN ARCIMS METADATA SERVICE **Published**

[Hide Metadata Details ▲](#)

Metadata Contacts ►

METADATA CONTACT

INDIVIDUAL'S NAME **Waterfront and Open Space Division**
ORGANIZATION'S NAME **New York City Department of City Planning**
CONTACT'S ROLE **publisher**

CONTACT INFORMATION ►

ADDRESS

TYPE **both**
DELIVERY POINT **120 Broadway, 31st Floor**
CITY **New York**
ADMINISTRATIVE AREA **NY**
POSTAL CODE **10271**
COUNTRY **US**
E-MAIL ADDRESS **wrp@planning.nyc.gov**

[Hide Contact information ▲](#)

[Hide Metadata Contacts ▲](#)

Thumbnail and Enclosures ►

THUMBNAIL

THUMBNAIL TYPE **JPG**

[Hide Thumbnail and Enclosures ▲](#)

FGDC Metadata (read-only) ▼