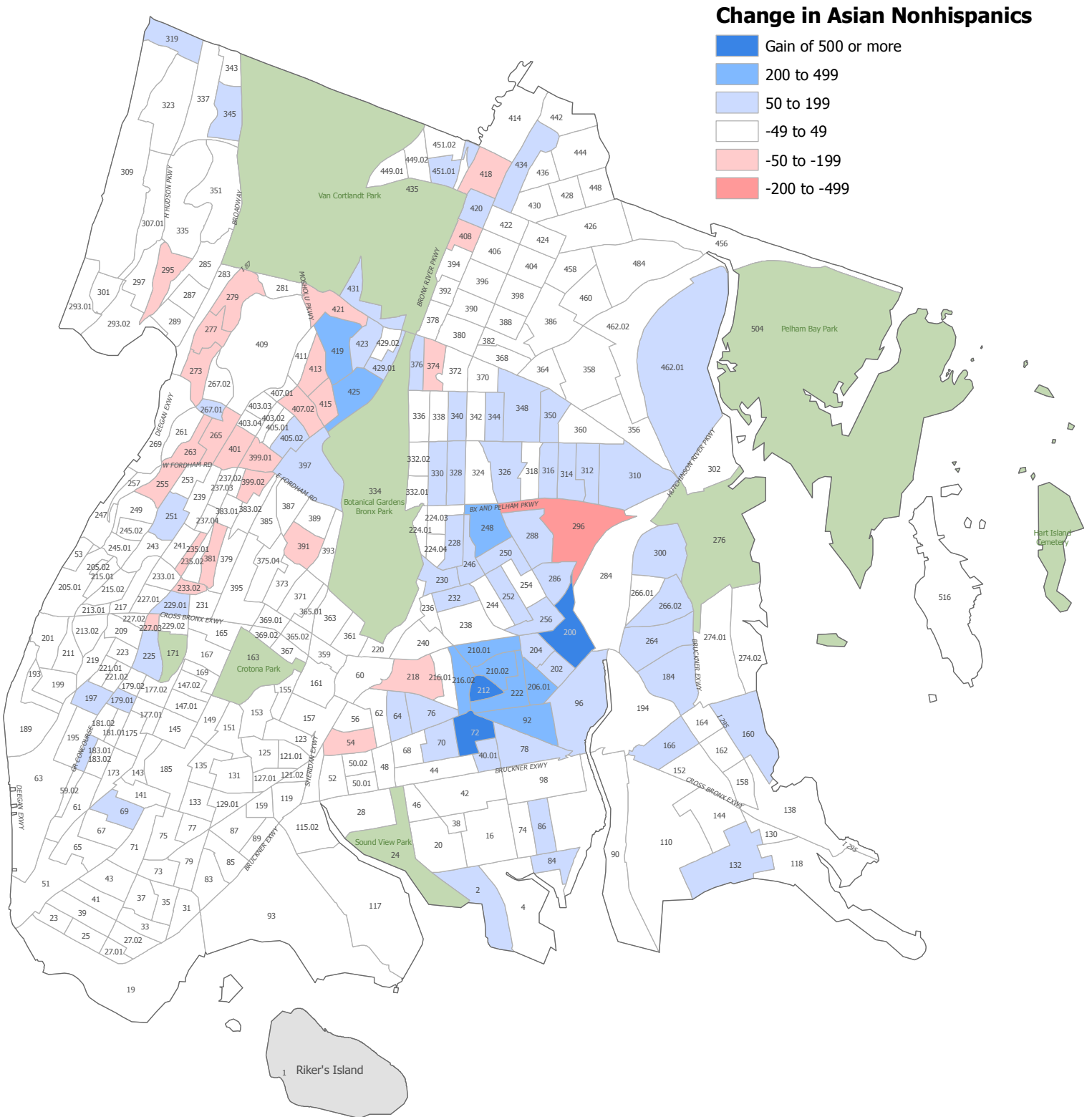


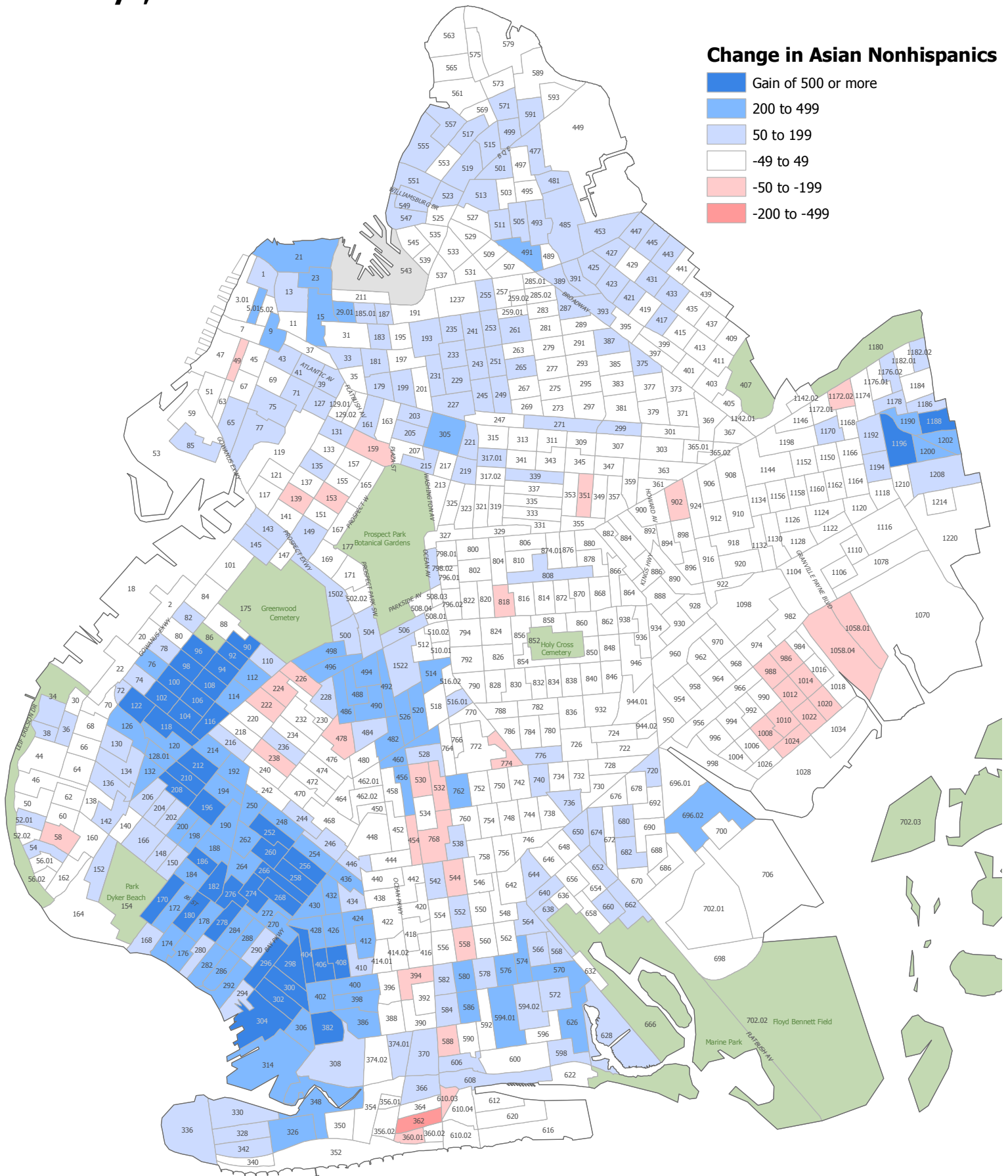
# PL-P12 CT: Change in the Asian Nonhispanic Population by Census Tract Bronx, 2000 to 2010



Asian nonhispanics of a single race

Source: U.S. Census Bureau, 2000 & 2010 Census Public Law 94-171 Files  
Population Division - New York City Department of City Planning

# PL-P12 CT: Change in the Asian Nonhispanic Population by Census Tract Brooklyn, 2000 to 2010



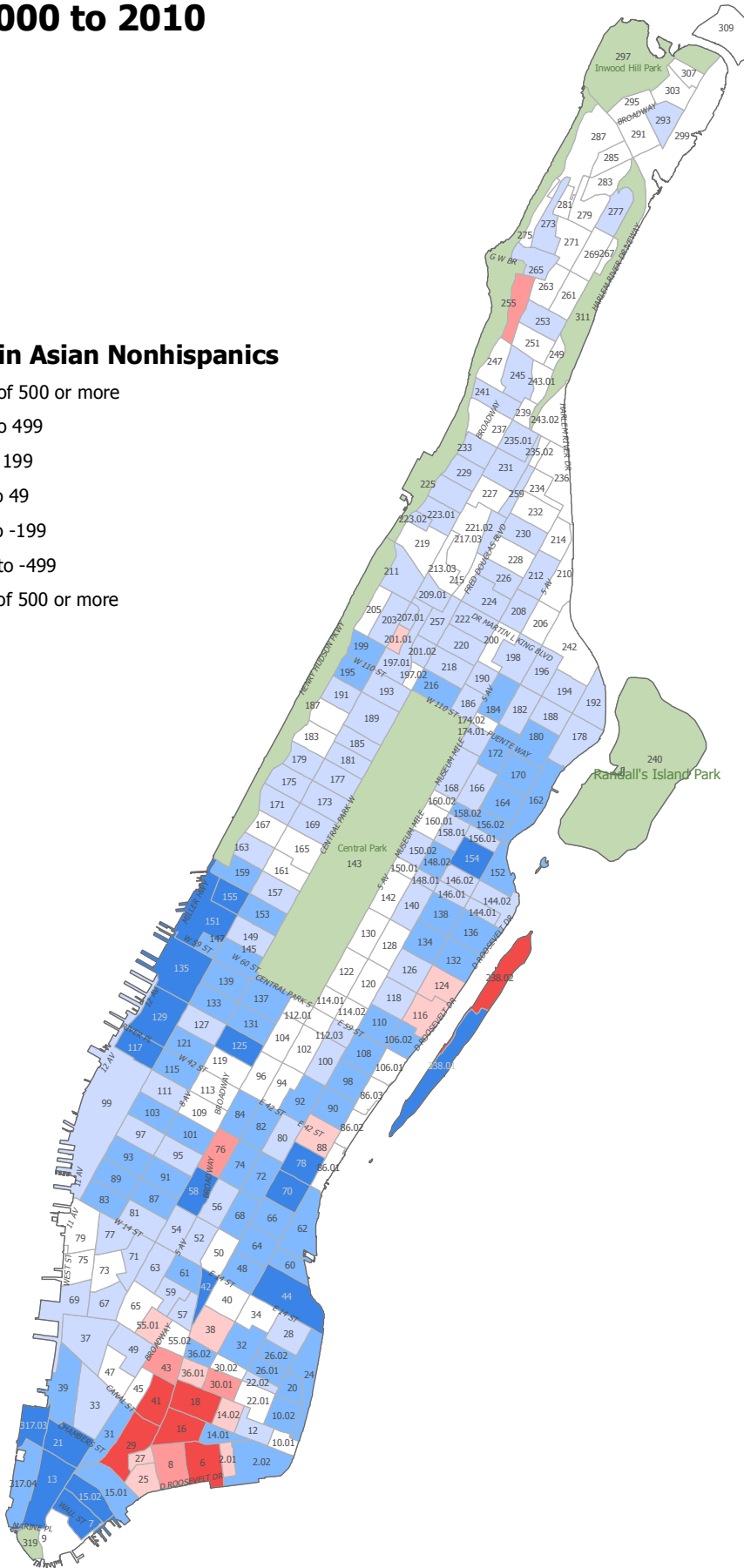
**Change in Asian Nonhispanics**

- Gain of 500 or more
- 200 to 499
- 50 to 199
- 49 to 49
- 50 to -199
- 200 to -499

Asian nonhispanics of a single race  
 Source: U.S. Census Bureau, 2000 & 2010 Census Public Law 94-171 Files  
 Population Division - New York City Department of City Planning

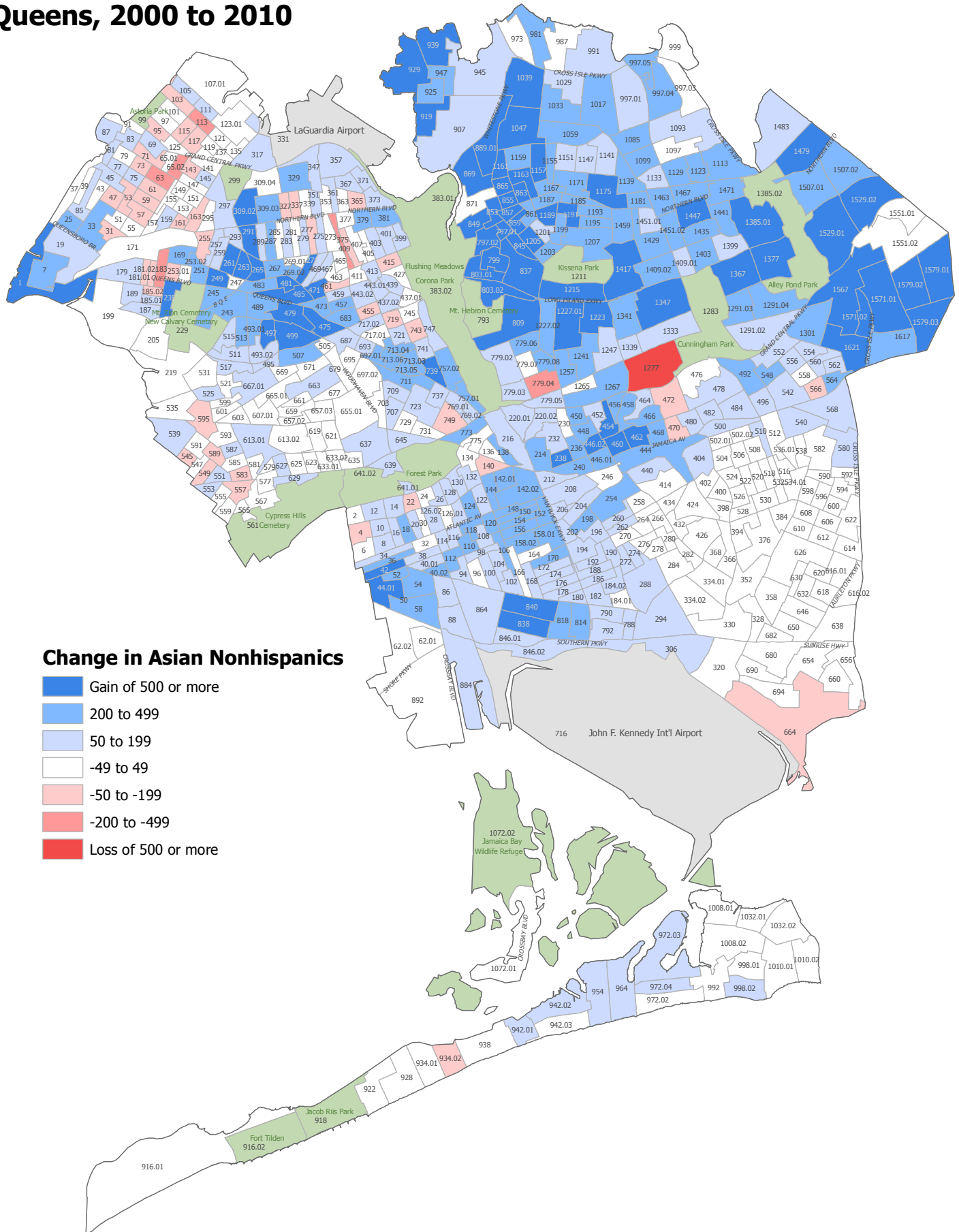
# PL-P12 CT: Change in the Asian Nonhispanic Population by Census Tract Manhattan, 2000 to 2010

## Change in Asian Nonhispanics



Asian nonhispanics of a single race  
 Source: U.S. Census Bureau, 2000 & 2010 Census Public Law 94-171 Files  
 Population Division - New York City Department of City Planning

# PL-P12 CT: Change in the Asian Nonhispanic Population by Census Tract Queens, 2000 to 2010



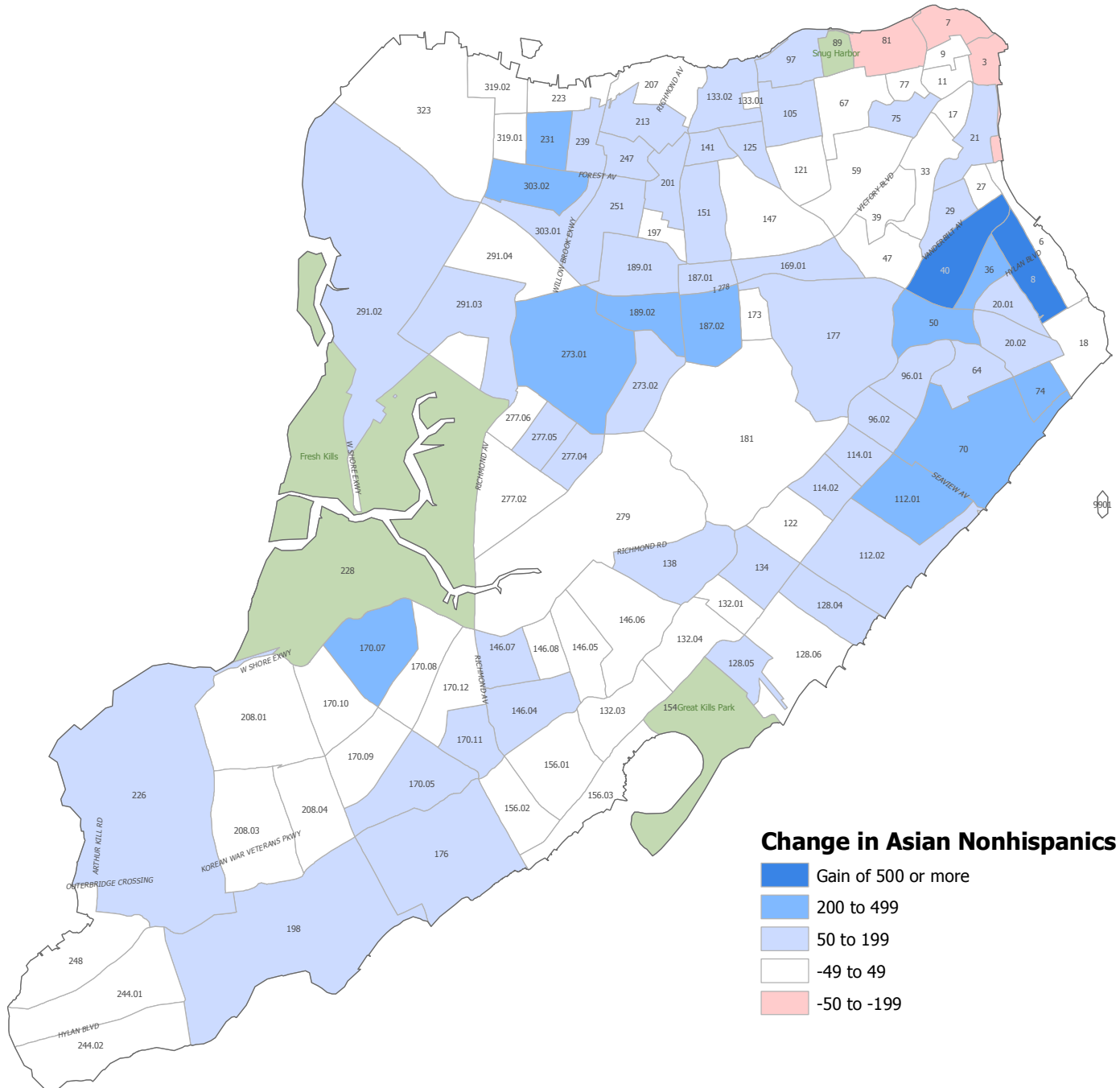
## Change in Asian Nonhispanics

- Gain of 500 or more
- 200 to 499
- 50 to 199
- 49 to 49
- 50 to -199
- 200 to -499
- Loss of 500 or more

Asian nonhispanics of a single race

Source: U.S. Census Bureau, 2000 & 2010 Census Public Law 94-171 Files  
Population Division - New York City Department of City Planning

# PL-P12 CT: Change in the Asian Nonhispanic Population by Census Tract Staten Island, 2000 to 2010



Asian nonhispanics of a single race

Source: U.S. Census Bureau, 2000 & 2010 Census Public Law 94-171 Files  
Population Division - New York City Department of City Planning