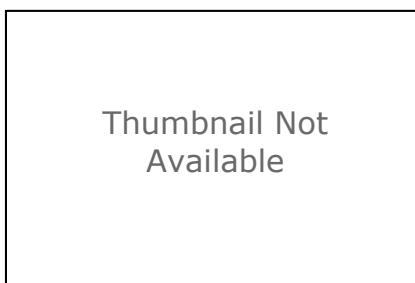


GISPROD.SDE.DCP_EARD_Edesignations

SDE Feature Class



Tags

Manhattan, New York, Brooklyn, E-Designation, Staten Island, environmental requirements, Air Quality Impact, (E) Designation, New York City, Window/Wall Noise Attenuation, Bronx, Richmond, HazMat, Special Designation, Zoning Map Designation, Queens, Hazardous Material Contamination, Kings, environment

Summary

(E) Designations are the approximate location, represented by a point of the tax lot centroid, on property that may be affected by noise or air quality, or hazardous material contamination.

Description

(E) Designations are established to provide notice of the presence of an environmental requirement pertaining to potential hazardous materials contamination, high ambient noise levels or air emission concerns on a particular tax lot. This includes CEQR Environment Requirements (Table 1) and CEQR Restrictive Declarations (Table 2), in Appendix C of the Zoning Resolution.

Credits

Department of City Planning

Use limitations

This dataset is being provided by the Department of City Planning (DCP) on DCP's website for informational purposes only. DCP does not warranty the completeness, accuracy, content, or fitness for any particular purpose or use of the dataset, nor are any such warranties to be implied or inferred with respect to the dataset as furnished on the website. DCP and the City are not liable for any deficiencies in the completeness, accuracy, content, or fitness for any particular purpose or use the dataset, or applications utilizing the dataset, provided by any third party.

Extent

West -74.241040 **East** -73.700307
North 40.909962 **South** 40.522873

Scale Range

There is no scale range for this item.

ArcGIS Metadata ►

Topics and Keywords ►

THEMES OR CATEGORIES OF THE RESOURCE environment

* CONTENT TYPE Downloadable Data

PLACE KEYWORDS Manhattan, New York, Brooklyn, Staten Island, New York City, Bronx, Richmond, Queens, Kings

THEME KEYWORDS E-Designation, environmental requirements, Air Quality Impact, (E) Designation, Window/Wall Noise Attenuation, HazMat, Special Designation, Zoning Map Designation, Hazardous Material Contamination

THEME KEYWORDS environment

THESAURUS ►

TITLE ISO 19115 Topic Categories

Hide Thesaurus ▲

Hide Topics and Keywords ▲

Citation ►

* TITLE GISPROD.SDE.DCP_EARD_Edesignations

PUBLICATION DATE 2019-02-28

PRESENTATION FORMATS digital map

FGDC GEOSPATIAL PRESENTATION FORMAT vector digital data

Hide Citation ▲

Citation Contacts ►

RESPONSIBLE PARTY

ORGANIZATION'S NAME New York City Department of City Planning

CONTACT'S ROLE publisher

RESPONSIBLE PARTY

ORGANIZATION'S NAME New York City Department of City Planning

CONTACT'S ROLE originator

Hide Citation Contacts ▲

Resource Details ►

DATASET LANGUAGES English (UNITED STATES)

STATUS completed

SPATIAL REPRESENTATION TYPE vector

* PROCESSING ENVIRONMENT Microsoft Windows 7 Version 6.1 (Build 7601) Service Pack 1; Esri ArcGIS 10.3.1.4959

CREDITS

Department of City Planning

ARCGIS ITEM PROPERTIES

NAME DCP_EARD_Edesignations_20190228
 LOCATION withheld
 * ACCESS PROTOCOL ArcSDE Connection

[Hide Resource Details ▲](#)

Extents ►

EXTENT

GEOGRAPHIC EXTENT

BOUNDING RECTANGLE

WEST LONGITUDE -74.24104
 EAST LONGITUDE -73.700308
 SOUTH LATITUDE 40.522873
 NORTH LATITUDE 40.909811

EXTENT

GEOGRAPHIC EXTENT

BOUNDING RECTANGLE

EXTENT TYPE Extent used for searching
 * WEST LONGITUDE -74.241040
 * EAST LONGITUDE -73.700307
 * NORTH LATITUDE 40.909962
 * SOUTH LATITUDE 40.522873
 * EXTENT CONTAINS THE RESOURCE Yes

EXTENT IN THE ITEM'S COORDINATE SYSTEM

* WEST LONGITUDE 917624.504630
 * EAST LONGITUDE 1067087.738840
 * SOUTH LATITUDE 129914.265484
 * NORTH LATITUDE 270801.916779
 * EXTENT CONTAINS THE RESOURCE Yes

[Hide Extents ▲](#)

Resource Points of Contact ►

POINT OF CONTACT

ORGANIZATION'S NAME New York City Department of City Planning
 CONTACT'S ROLE point of contact

CONTACT INFORMATION ►

ADDRESS

TYPE both
 DELIVERY POINT 120 Broadway, 31st Floor
 CITY New York
 ADMINISTRATIVE AREA NY
 POSTAL CODE 10271
 COUNTRY US

[Hide Contact information ▲](#)

[Hide Resource Points of Contact ▲](#)

Resource Maintenance ►

RESOURCE MAINTENANCE

UPDATE FREQUENCY monthly

[Hide Resource Maintenance ▲](#)

Resource Constraints ►

LEGAL CONSTRAINTS

LIMITATIONS OF USE

See access and use constraints information.

OTHER CONSTRAINTS

The data are freely available to all New York City agencies and the public.

CONSTRAINTS

LIMITATIONS OF USE

This dataset is being provided by the Department of City Planning (DCP) on DCP's website for informational purposes only. DCP does not warranty the completeness, accuracy, content, or fitness for any particular purpose or use of the dataset, nor are any such warranties to be implied or inferred with respect to the dataset as furnished on the website. DCP and the City are not liable for any deficiencies in the completeness, accuracy, content, or fitness for any particular purpose or use the dataset, or applications utilizing the dataset, provided by any third party.

[Hide Resource Constraints ▲](#)

Spatial Reference ►

ARCGIS COORDINATE SYSTEM

* TYPE Projected

* GEOGRAPHIC COORDINATE REFERENCE GCS_North_American_1983

* PROJECTION NAD_1983_StatePlane_New_York_Long_Island_FIPS_3104_Feet

* COORDINATE REFERENCE DETAILS

PROJECTED COORDINATE SYSTEM

WELL-KNOWN IDENTIFIER 102718

X ORIGIN -120039300

Y ORIGIN -96540300

XY SCALE 3048.0060960121928

Z ORIGIN 0

Z SCALE 1

M ORIGIN 0

M SCALE 1

XY TOLERANCE 0.0032808333333333331

Z TOLERANCE 0.001

M TOLERANCE 0.001

HIGH PRECISION true

LATEST WELL-KNOWN IDENTIFIER 2263

WELL-KNOWN TEXT PROJCS

["NAD_1983_StatePlane_New_York_Long_Island_FIPS_3104_Feet",GEOGCS

["GCS_North_American_1983",DATUM["D_North_American_1983",SPHEROID

["GRS_1980",6378137.0,298.257222101]],PRIMEM["Greenwich",0.0],UNIT

["Degree",0.0174532925199433]],PROJECTION["Lambert_Conformal_Conic"],PARAMETER

["False_Easting",984250.0],PARAMETER["False_Northing",0.0],PARAMETER

["Central_Meridian",-74.0],PARAMETER

["Standard_Parallel_1",40.66666666666666],PARAMETER

```
["Standard_Parallel_2",41.03333333333333],PARAMETER
["Latitude_Of_Origin",40.16666666666666],UNIT
["Foot_US",0.3048006096012192],AUTHORITY["EPSG",2263]]
```

REFERENCE SYSTEM IDENTIFIER

* VALUE 2263
 * CODESPACE EPSG
 * VERSION 8.6.2

Hide Spatial Reference ▲

Spatial Data Properties ►

VECTOR ►

* LEVEL OF TOPOLOGY FOR THIS DATASET geometry only

GEOMETRIC OBJECTS

FEATURE CLASS NAME GISPROD.SDE.DCP_EARD_Edesignations
 * OBJECT TYPE point
 * OBJECT COUNT 9994

Hide Vector ▲

ARCGIS FEATURE CLASS PROPERTIES ►

FEATURE CLASS NAME GISPROD.SDE.DCP_EARD_Edesignations
 * FEATURE TYPE Simple
 * GEOMETRY TYPE Point
 * HAS TOPOLOGY FALSE
 * FEATURE COUNT 9994
 * SPATIAL INDEX TRUE
 * LINEAR REFERENCING FALSE

Hide ArcGIS Feature Class Properties ▲

Hide Spatial Data Properties ▲

Distribution ►

DISTRIBUTOR ►

CONTACT INFORMATION

ORGANIZATION'S NAME New York City Department of City Planning
 CONTACT'S ROLE distributor

CONTACT INFORMATION ►

ADDRESS

TYPE both
 DELIVERY POINT 120 Broadway, 31st Floor
 CITY New York
 ADMINISTRATIVE AREA New York
 POSTAL CODE 10271
 COUNTRY US

CONTACT INSTRUCTIONS

Available at the following website: <https://www1.nyc.gov/site/planning/data-maps/open-data.page>

[Hide Contact information ▲](#)

ORDERING PROCESS

TERMS AND FEES Free

[Hide Distributor ▲](#)

DISTRIBUTION FORMAT

* NAME SDE Feature Class

[Hide Distribution ▲](#)

Fields ►

DETAILS FOR OBJECT [GISPROD.SDE.DCP_EARD_Edesignations ►](#)

* TYPE Feature Class

* ROW COUNT 9994

FIELD [ENUMBER ►](#)

* ALIAS ENUMBER

* DATA TYPE String

* WIDTH 1073741822

* PRECISION 0

* SCALE 0

[Hide Field ENUMBER ▲](#)

FIELD [OBJECTID ►](#)

* ALIAS OBJECTID

* DATA TYPE OID

* WIDTH 4

* PRECISION 10

* SCALE 0

FIELD DESCRIPTION

Internal feature number.

DESCRIPTION SOURCE

Esri

DESCRIPTION OF VALUES

Sequential unique whole numbers that are automatically generated.

[Hide Field OBJECTID ▲](#)

FIELD [Shape ►](#)

* ALIAS Shape

* DATA TYPE Geometry

* WIDTH 4

* PRECISION 0

* SCALE 0

FIELD DESCRIPTION

Feature geometry.

DESCRIPTION SOURCE
ESRI

DESCRIPTION OF VALUES
Coordinates defining the features.

Hide Field Shape ▲

FIELD BBL ►

- * ALIAS BBL
- * DATA TYPE Double
- * WIDTH 8
- * PRECISION 38
- * SCALE 8

Hide Field BBL ▲

FIELD TAXBLOCK ►

- * ALIAS TAXBLOCK
- * DATA TYPE Integer
- * WIDTH 4
- * PRECISION 10
- * SCALE 0

Hide Field TAXBLOCK ▲

FIELD TAXLOT ►

- * ALIAS TAXLOT
- * DATA TYPE Integer
- * WIDTH 4
- * PRECISION 10
- * SCALE 0

Hide Field TAXLOT ▲

FIELD CEQR_NUM ►

- * ALIAS CEQR_NUM
- * DATA TYPE String
- * WIDTH 1073741822
- * PRECISION 0
- * SCALE 0

Hide Field CEQR_NUM ▲

FIELD BOROCODE ►

- * ALIAS BOROCODE
- * DATA TYPE Integer
- * WIDTH 4
- * PRECISION 10
- * SCALE 0

[Hide Field BOROCODE ▲](#)

FIELD **ULURP_NUM** ►

* ALIAS ULURP_NUM
 * DATA TYPE String
 * WIDTH 1073741822
 * PRECISION 0
 * SCALE 0

[Hide Field ULURP_NUM ▲](#)

[Hide Details for object GISPROD.SDE.DCP_EARD_Edesignations ▲](#)

[Hide Fields ▲](#)

Metadata Details ►

METADATA LANGUAGE English (UNITED STATES)
 METADATA CHARACTER SET utf8 - 8 bit UCS Transfer Format

SCOPE OF THE DATA DESCRIBED BY THE METADATA dataset
 SCOPE NAME * dataset

* LAST UPDATE 2019-02-28

ARCGIS METADATA PROPERTIES
 METADATA FORMAT ArcGIS 1.0

CREATED IN ARCGIS FOR THE ITEM 2019-02-27 16:28:12
 LAST MODIFIED IN ARCGIS FOR THE ITEM 2019-02-28 16:30:43

AUTOMATIC UPDATES
 HAVE BEEN PERFORMED Yes
 LAST UPDATE 2019-02-28 16:30:43

[Hide Metadata Details ▲](#)

Metadata Contacts ►

METADATA CONTACT
 ORGANIZATION'S NAME New York City Department of City Planning
 CONTACT'S ROLE point of contact

CONTACT INFORMATION ►

ADDRESS
 TYPE both
 DELIVERY POINT 120 Broadway, 31st Floor
 CITY New York
 ADMINISTRATIVE AREA New York
 POSTAL CODE 10271

[Hide Contact information ▲](#)

[Hide Metadata Contacts](#) ▲

FGDC Metadata (read-only) ▼