

# Q44 Select Bus Service on Main Street

Queens Community Board 7 September 21, 2015



# About Select Bus Service

- Buses 15-23% faster
- 10%+ average increases in ridership in first year
- 95%+ customer satisfaction
- Better bus stops and connections
- Safer streets
- Maintain traffic flow





# Select Bus Service Features



**Faster fare collection**  
reduces time spent at stops



**Bus lanes improve in-motion**  
speeds and reliability



**Transit signal priority** reduces  
time spent at red lights



**Passenger information**  
improves the bus riding  
experience



**Pedestrian safety amenities**  
address safety concerns



**New curb regulations**  
balance the needs of  
parking, loading and buses

# Select Bus Service Fare Payment



- Riders pay with MetroCard or coins before boarding
- Take ticket from machine
- Board bus through all three doors



- MTA NYCT conducts random fare payment inspections

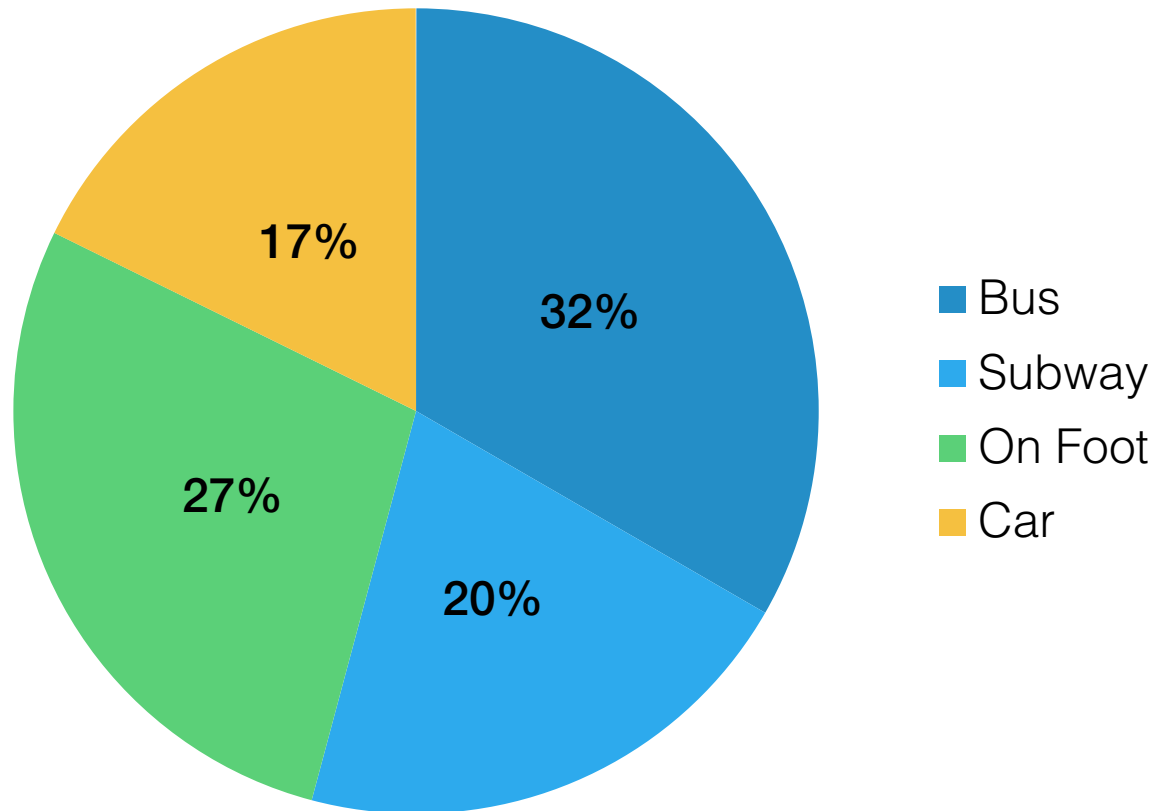
# Downtown Flushing On-Street Survey

How did you get to Downtown Flushing?

**83% ride transit or walk**

**52% ride transit**

**17% drive**



753 respondents interviewed on Main St between Northern Blvd and 41<sup>st</sup> Av in October 2014



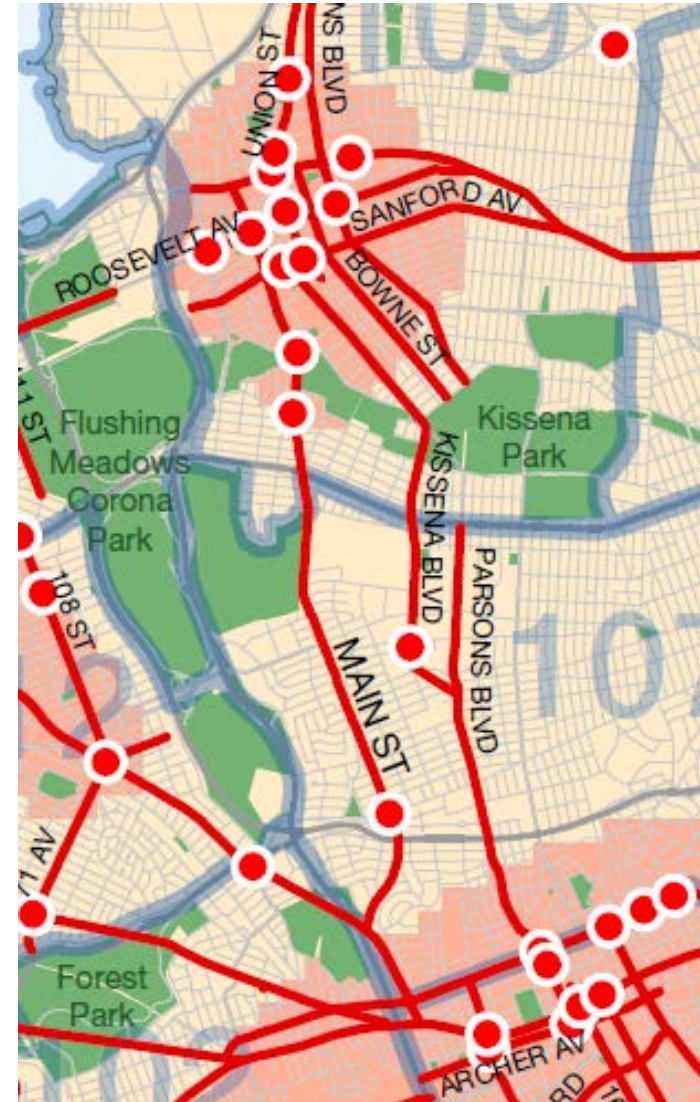
# Main St: **VISION ZERO** Priority Corridor

Main St from Northern Blvd to  
Queens Blvd (2009 to 2013)

- 3 Fatalities
- 32 Killed or Severely Injured (KSI)

Priority Intersections in CB 7

- Union St/Northern Blvd
- Main St/Roosevelt Av
- Main St/Elder Av
- Main St/Booth Memorial Av



# Q44 SBS Overview

42,000 daily riders on

- Q20A/B: Jamaica to College Point
- Q44: Jamaica to Bronx Zoo

Q44 LTD will be replaced by Q44 SBS, operating at all times

SBS will follow same route as LTD from Merrick Blvd in Jamaica to the Bronx Zoo





# Q44 SBS Stops

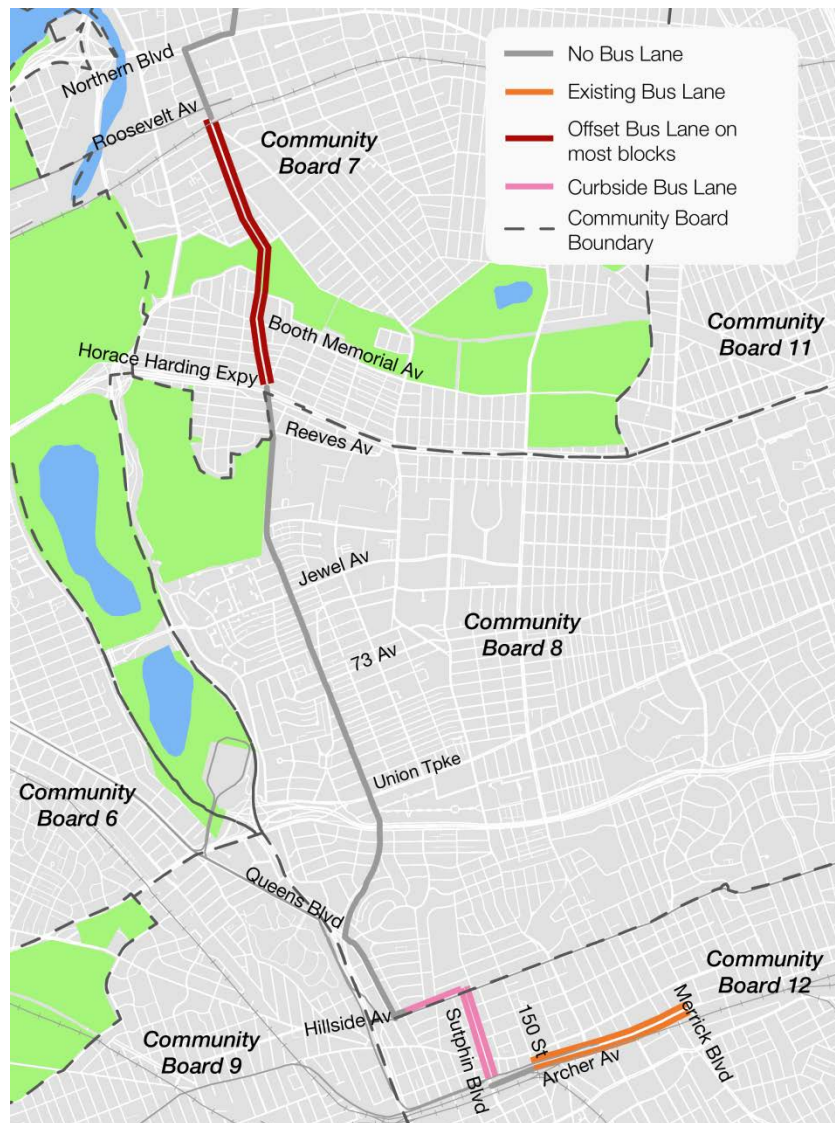
SBS will make fewer stops than Q44 LTD to better serve the busiest stops

- 8 fewer stops in The Bronx
- 4 stops removed in CB7
  - Whitestone Expy/Center Dr (currently SB only)
  - Parsons Blvd/17 Av
  - Parsons Blvd/21 Av
  - Main St/Northern Blvd
- All stops removed in CB7 will be served by Q20 (except Center Dr SB)





# Q44 Bus Lanes



Offset bus lanes with some curbside sections:

- NB Main St from 60 Av to 40 Rd
- SB Main St from 40 Rd to 60 Av

Approximately 1.1 miles of Main St bus lanes

Curbside bus lanes with midday parking:

- WB Hillside Ave from Sutphin Blvd to Queens Blvd
- NB and SB Sutphin Blvd from Hillside Av to Archer Av



# Bus Lane Design

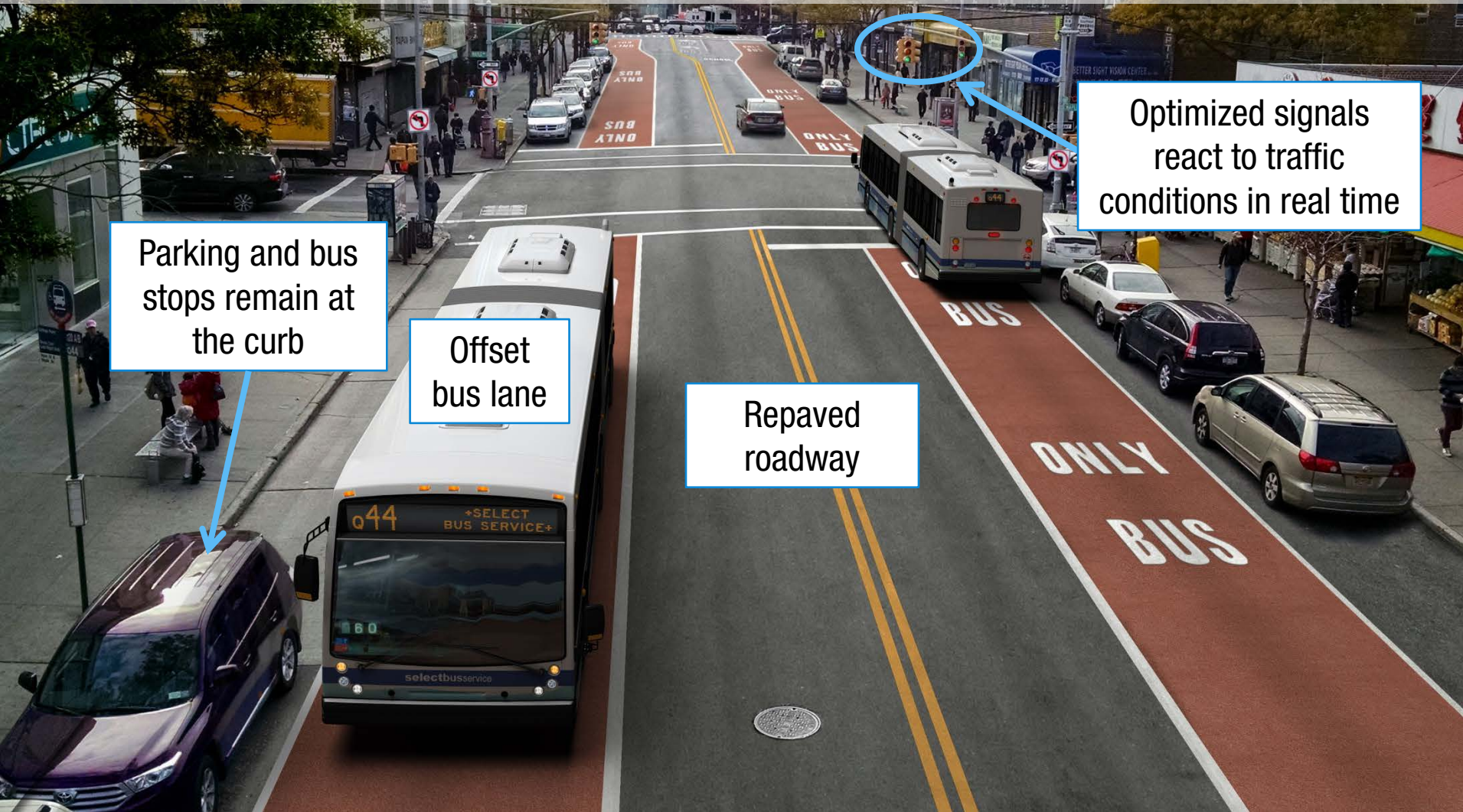
Intersections with No Left Turns





# Bus Lane Design

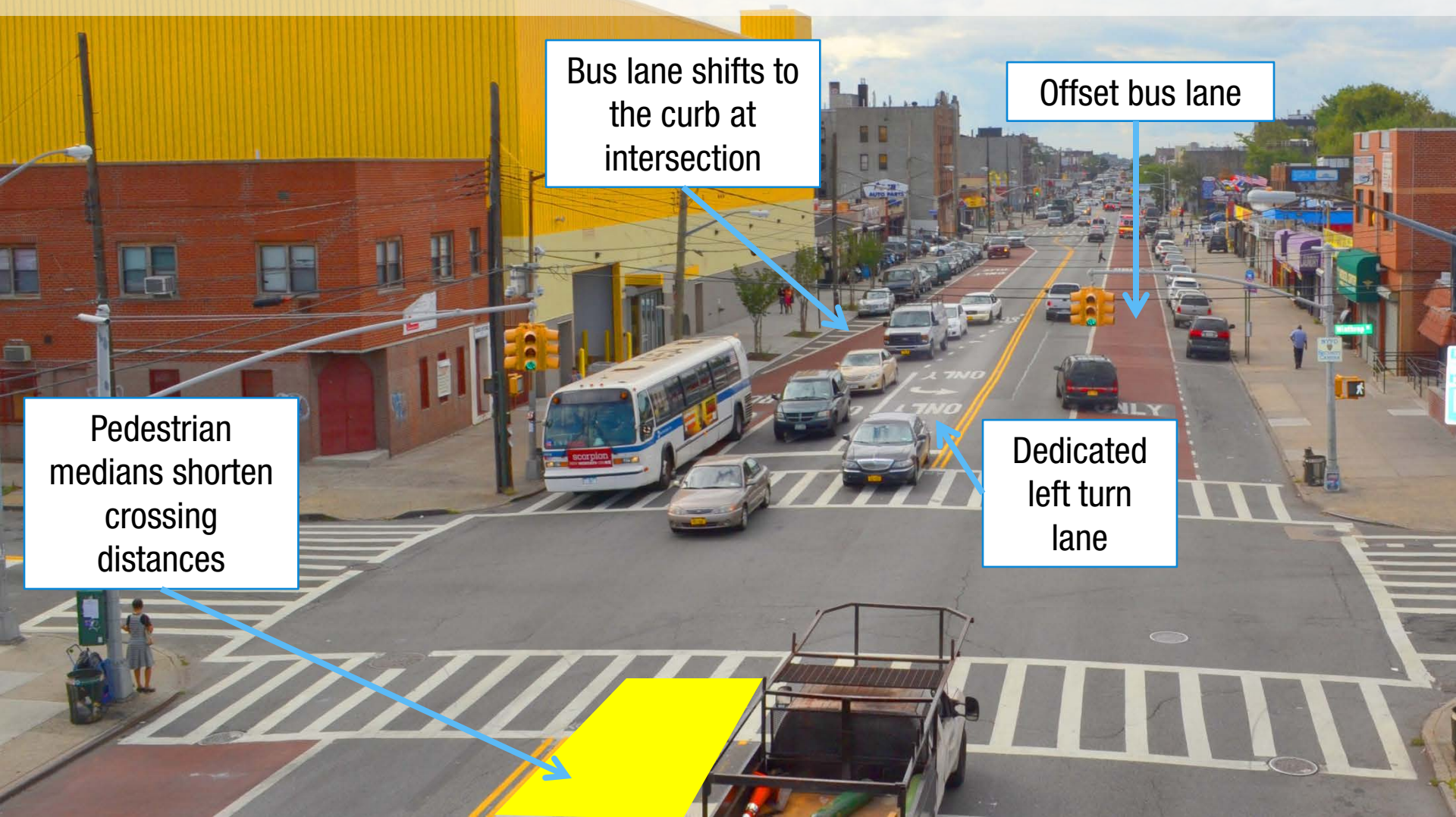
Intersections with No Left Turns





# Bus Lane Design

## Intersections with Left Turn Bay



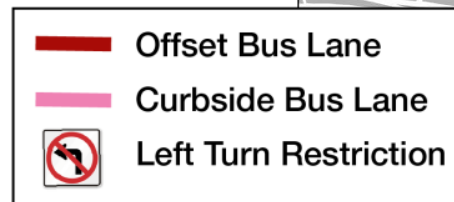


# Main St Bus Lanes

Mainly offset bus lanes in Queensborough Hill, so existing parking is retained

Higher turn volumes in north of Elder Av require more left turn bays, with curbside bus lane transitions

Revised design at 56 Av drops bus lane at intersection to preserve parking



# Main St Bus Lanes

## Left Turn Restrictions

- From SB Main St to Maple Av
- From NB Main St to Franklin Av
- From NB Main St to Booth Memorial Av
- From WB Booth Memorial to Main St
- From NB Main St to 59 Av
- From SB Main St to 60 Av

Left turn from SB Main to 56 Av is retained





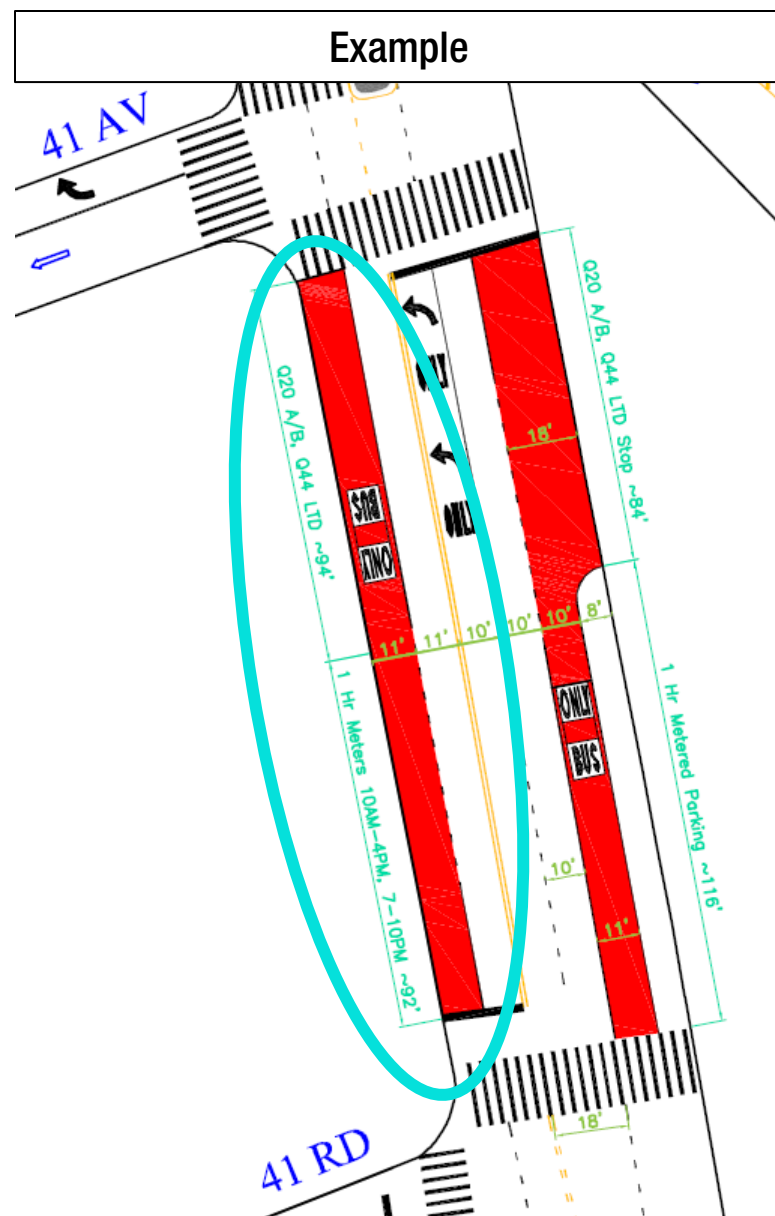
# Main St Bus Lanes

## Bus Lane Hours

On blocks with curbside bus lanes:

**Bus lane hours – 6 AM to 10 AM,  
4 PM to 7 PM, Mon to Sat**

Metered parking – 10 AM to 4 PM,  
Mon to Sat



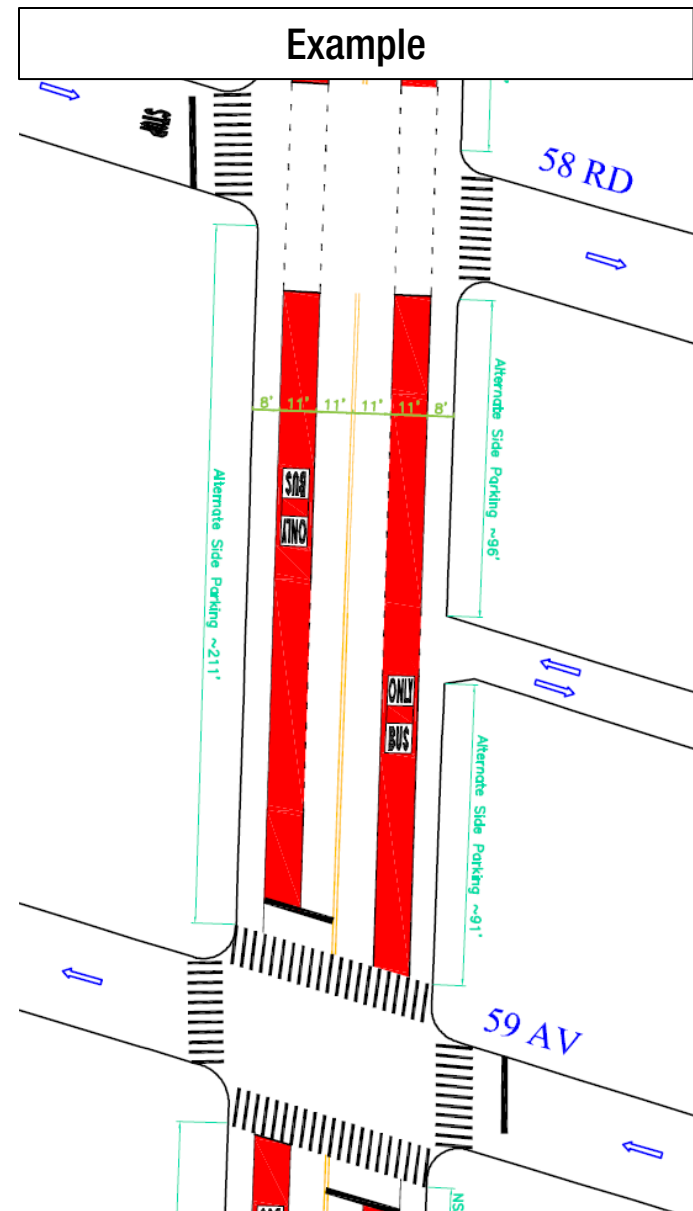
# Main St Bus Lanes

## Bus Lane Hours

On blocks with offset bus lanes:

**Bus lane hours: 7 AM to 7 PM,  
Mon-Sun**

Curbside parking/loading  
unchanged



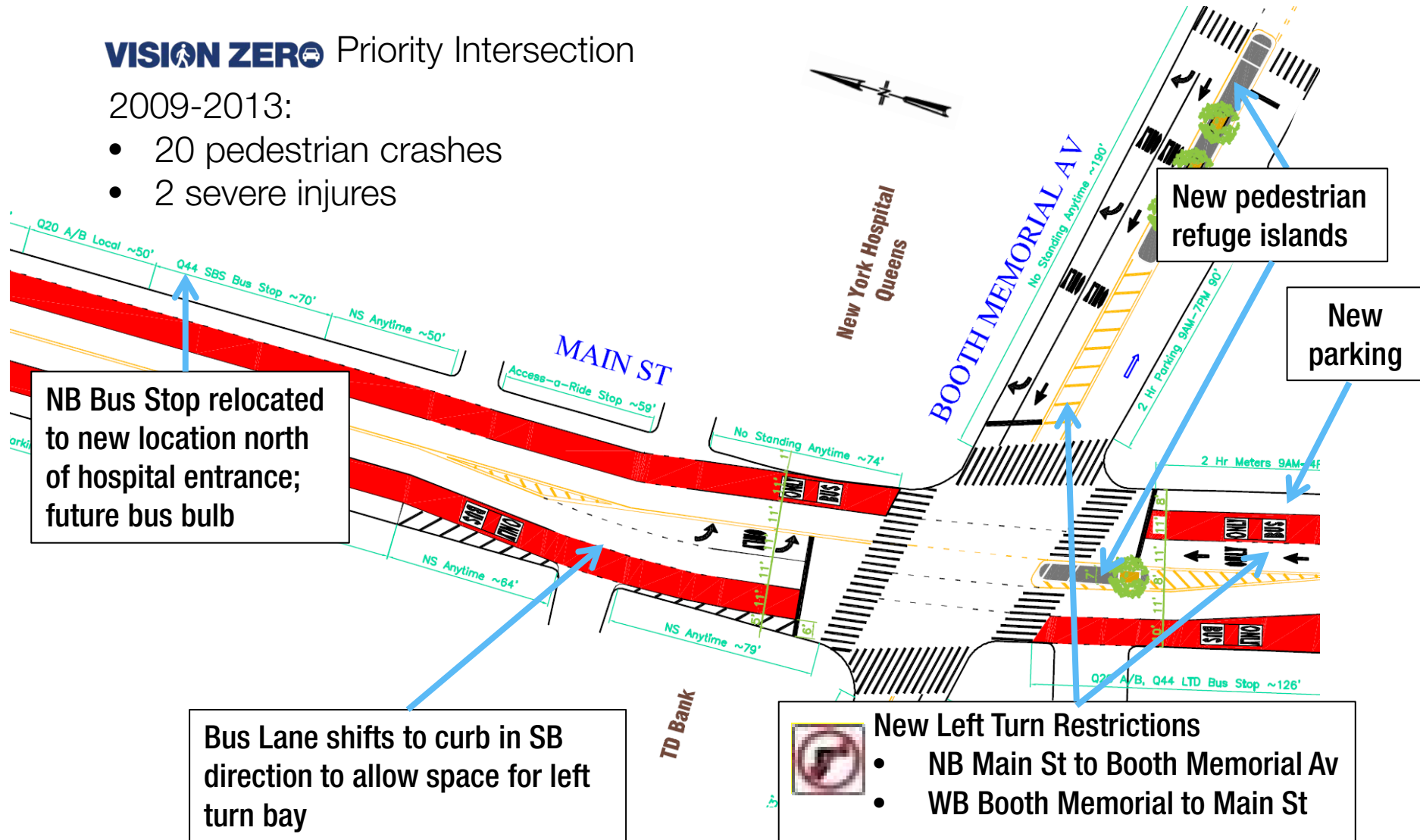


# Main St at Booth Memorial Av

## VISION ZERO Priority Intersection

2009-2013:

- 20 pedestrian crashes
- 2 severe injuries



# Related Initiatives:

## Main St Sidewalk Widening



DDC project to widen sidewalks on key Vision Zero corridor: Main Street between 38<sup>th</sup> Av and 41<sup>st</sup> Av

Provides sidewalk space in congested pedestrian zone

Construction slated to begin in spring 2016

DOT investigating traffic mitigation measures



# Next Steps

September/October 2015:

- Bus Lanes

- Fare Machines

- Curb Regulation Changes

November 2015:

- Q44 SBS launch

2017-2018:

- Capital Project (including bus bulbs)