

Randall / Leggett / Tiffany Avenues

Safety Improvements & Barretto Point Park Access

Spring
2010



Commissioner Janette Sadik-Khan New York City Department of Transportation
Presented May 12, 2010 by the Pedestrian Projects Group to Community Board 2

Project Area

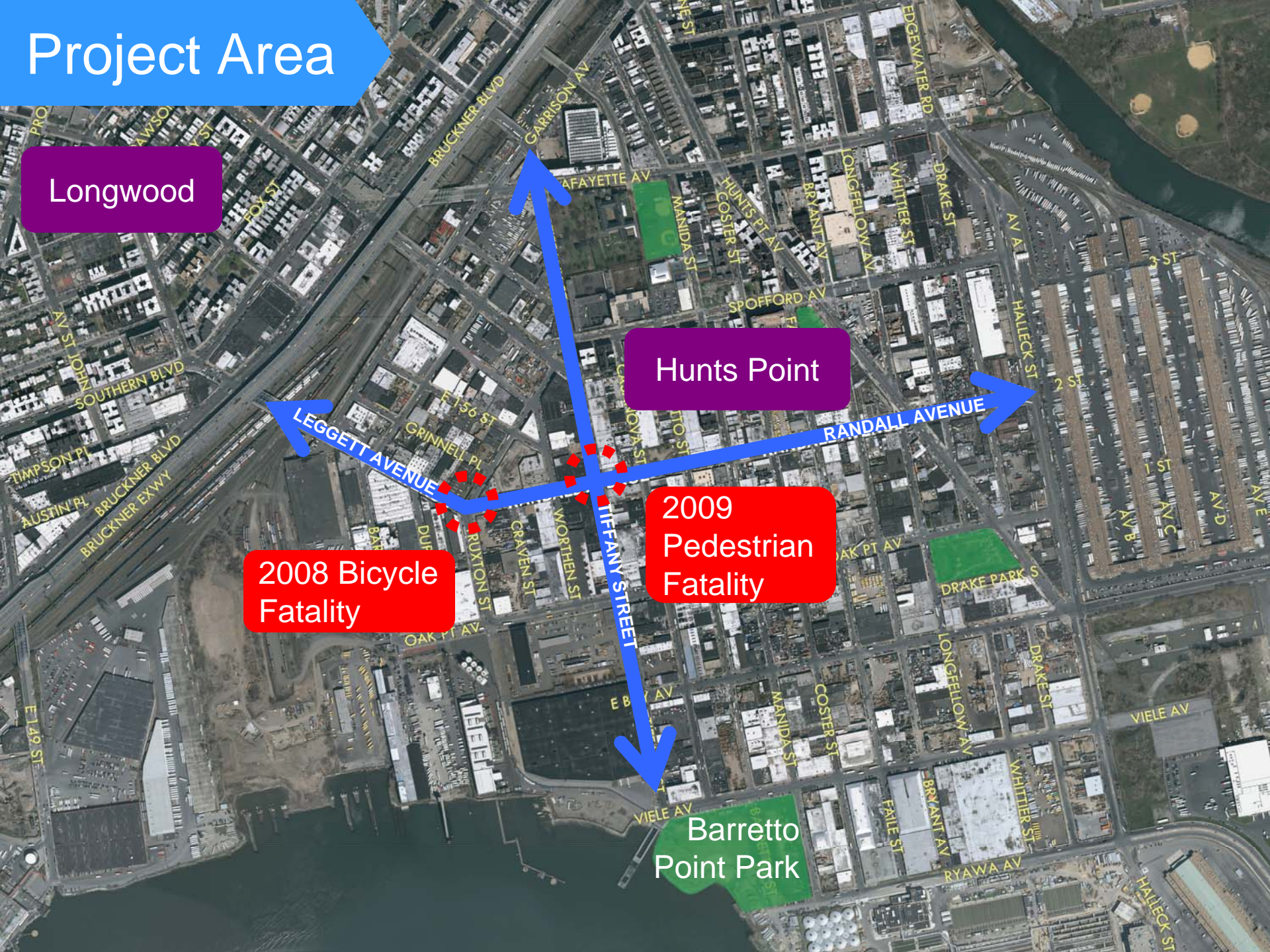
Longwood

Hunts Point

2008 Bicycle
Fatality

2009
Pedestrian
Fatality

Barretto
Point Park

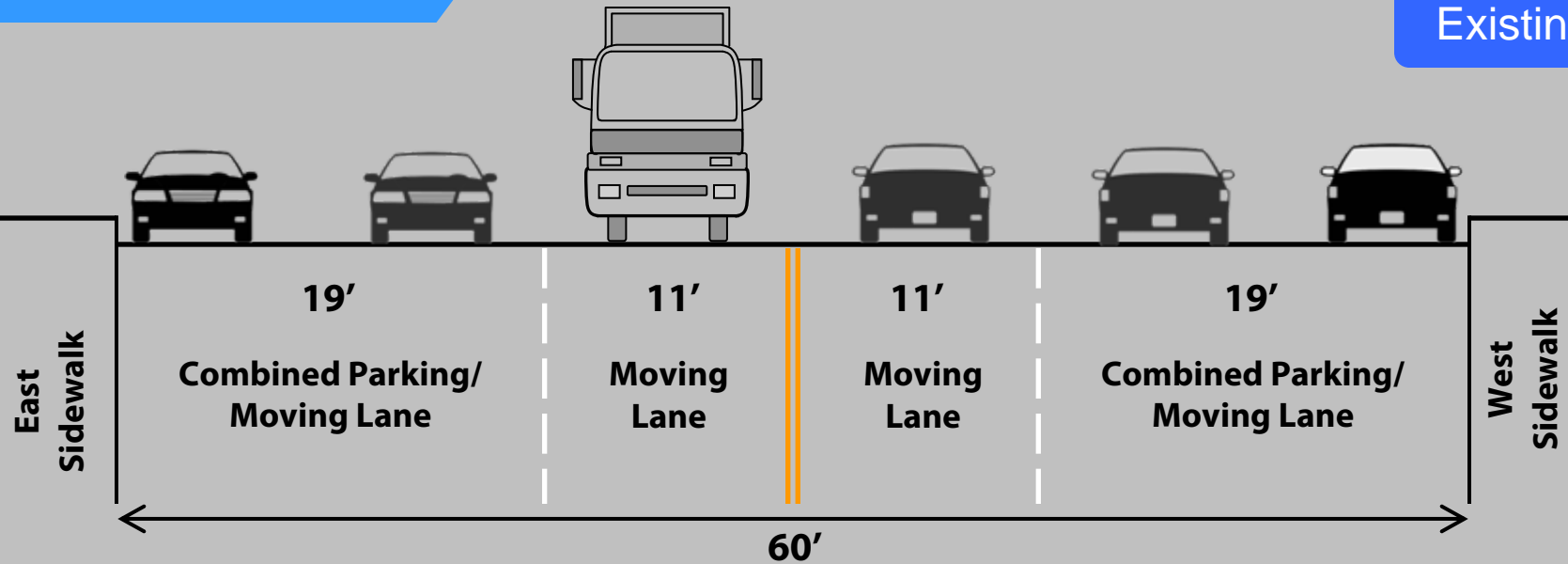


Truck Route Map

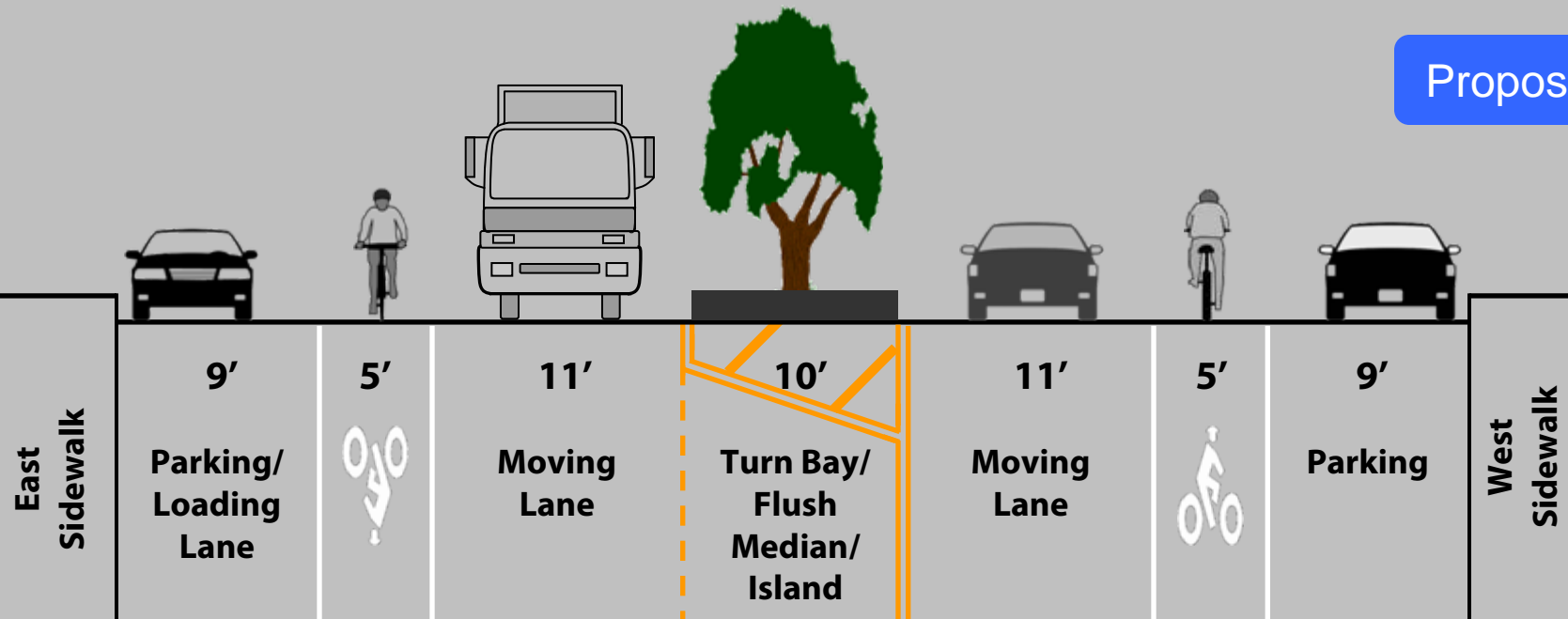


Cross-section

Existing

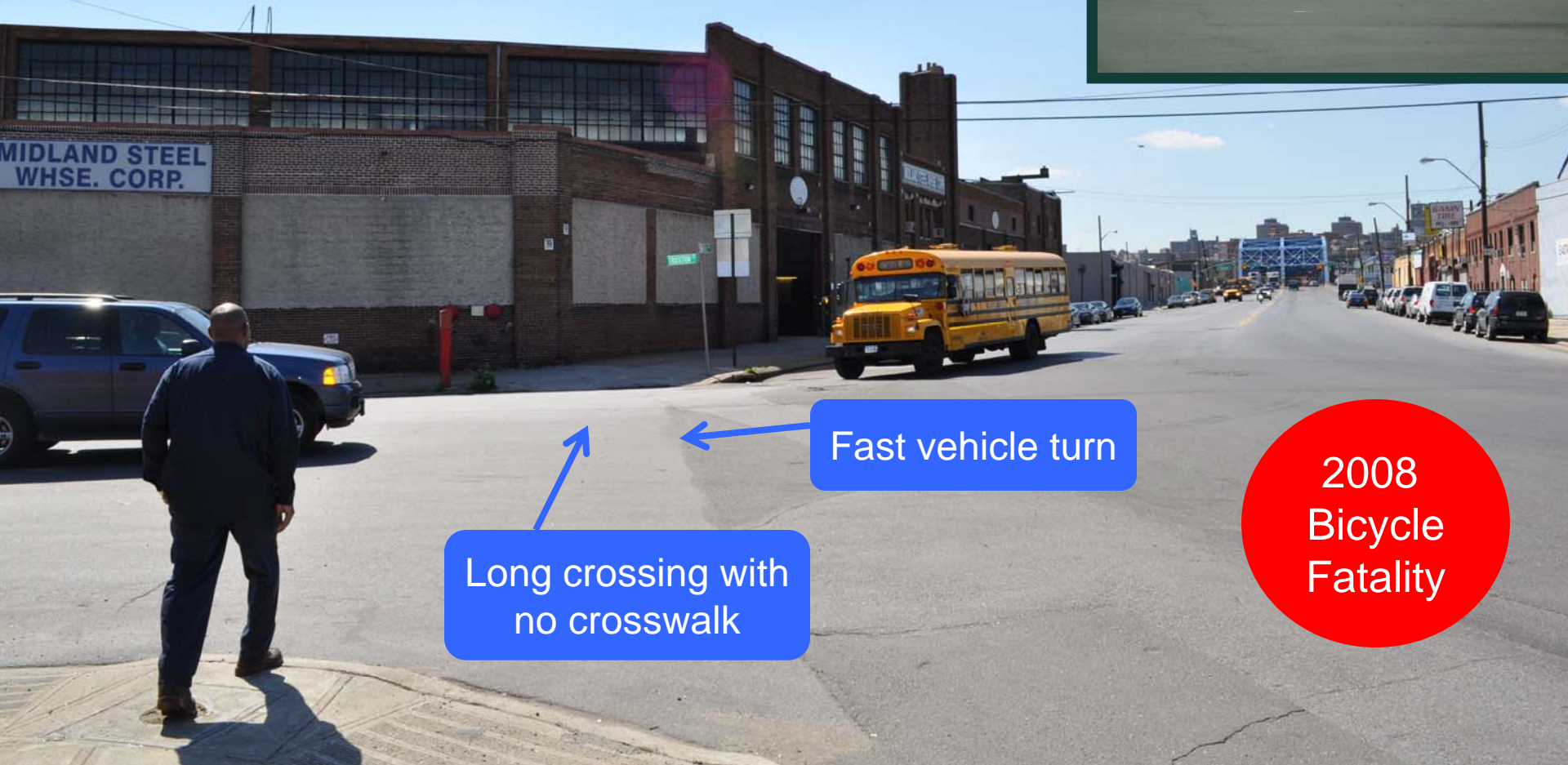


Proposed



Leggett/Randall Aves at Truxton St

Existing Conditions



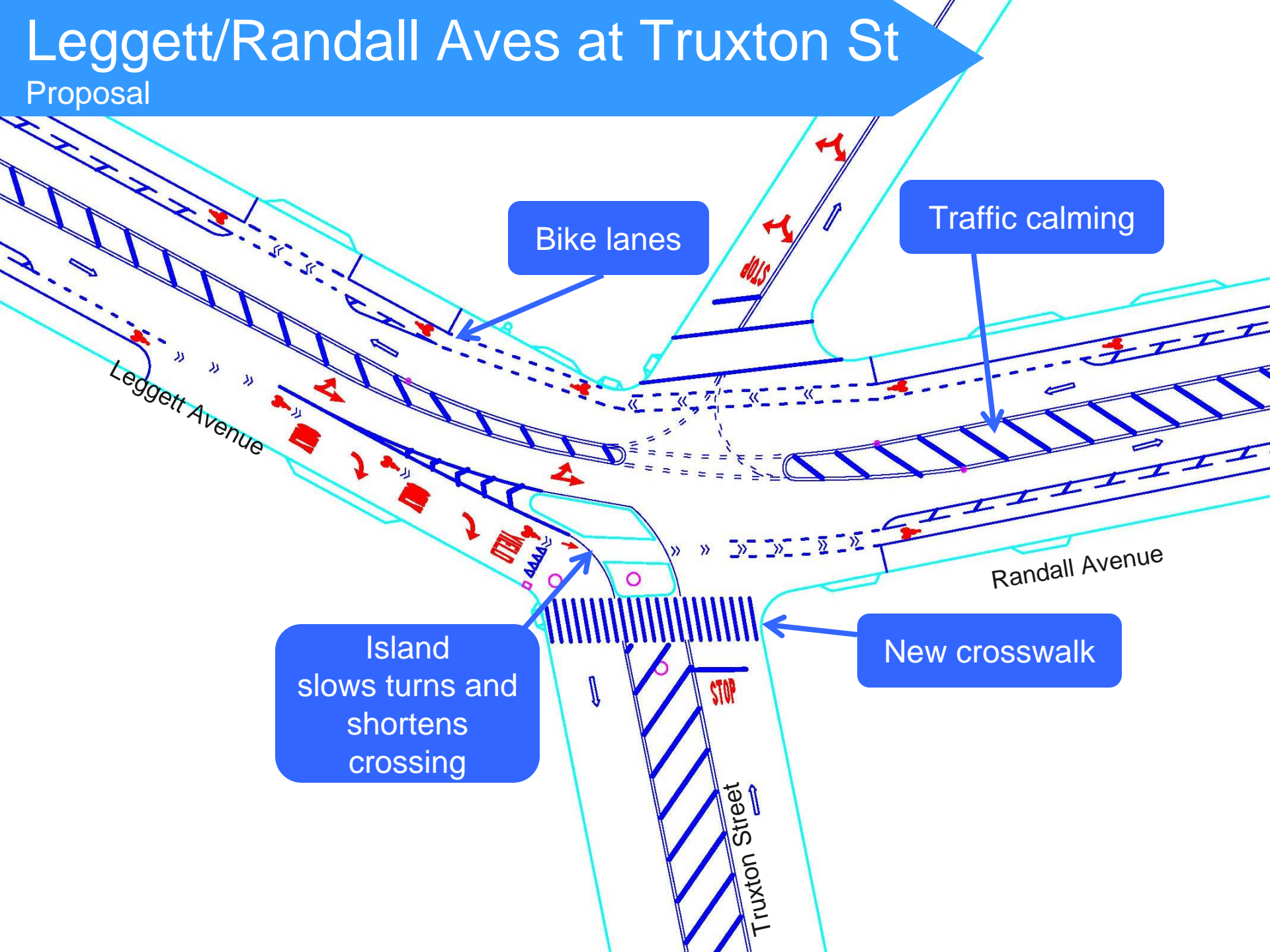
Fast vehicle turn

Long crossing with
no crosswalk

2008
Bicycle
Fatality

Leggett/Randall Aves at Truxton St

Proposal



Randall Ave at Tiffany St

Existing Conditions



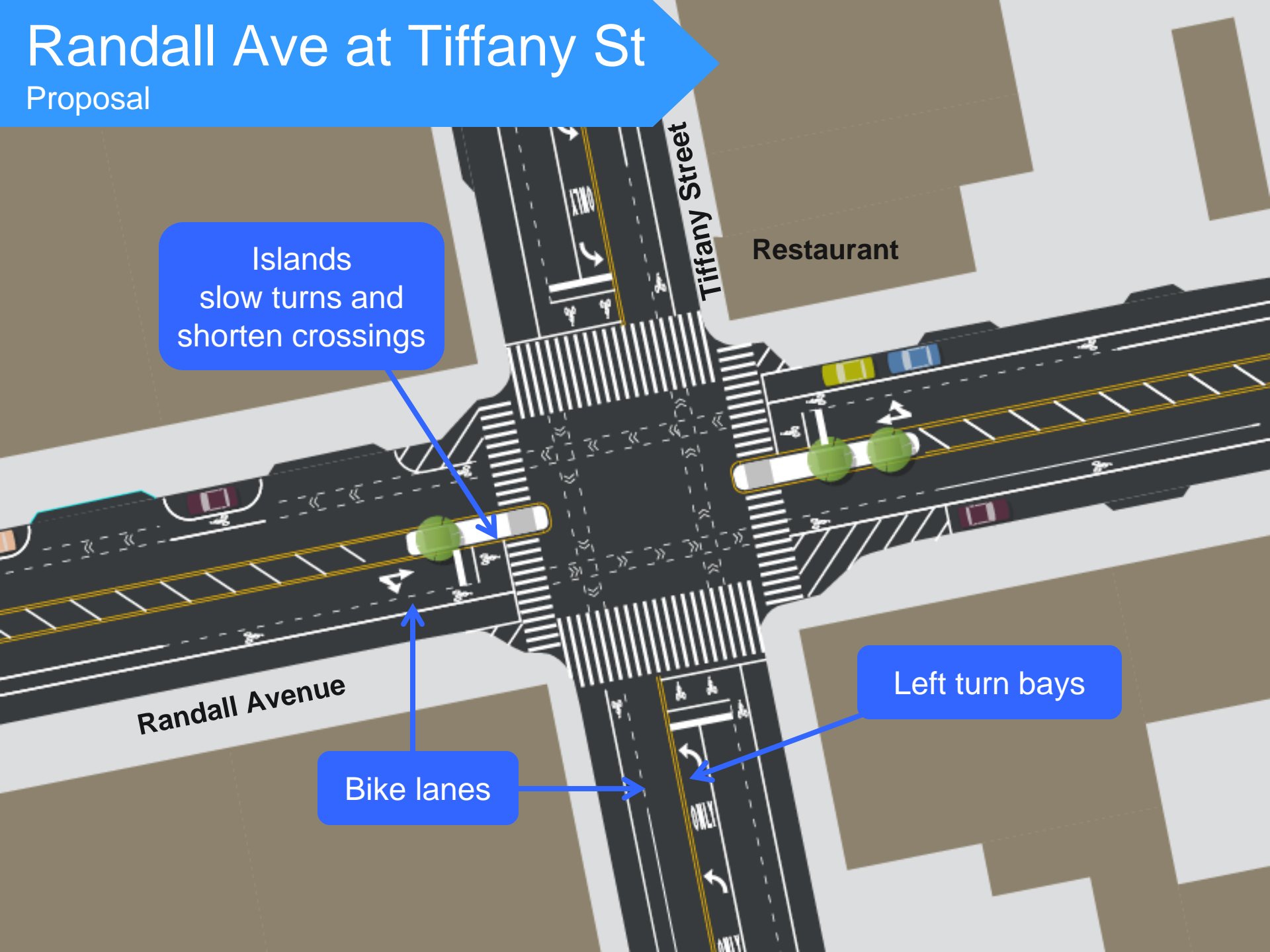
Long crossing
with truck turns



2009
Pedestrian
Fatality

Randall Ave at Tiffany St

Proposal



Islands
slow turns and
shorten crossings

Restaurant

Tiffany Street

Randall Avenue

Bike lanes

Left turn bays

Tiffany St to Barretto Point Park

Existing Conditions



Park in industrial
area with limited
access options

Tiffany St to Barretto Point Park

Proposal



Tiffany Street

Bike access

Refurbished
crosswalks

Viele Avenue

Barretto Point
Park Entrance

www.nyc.gov/dot

Thank
You

