



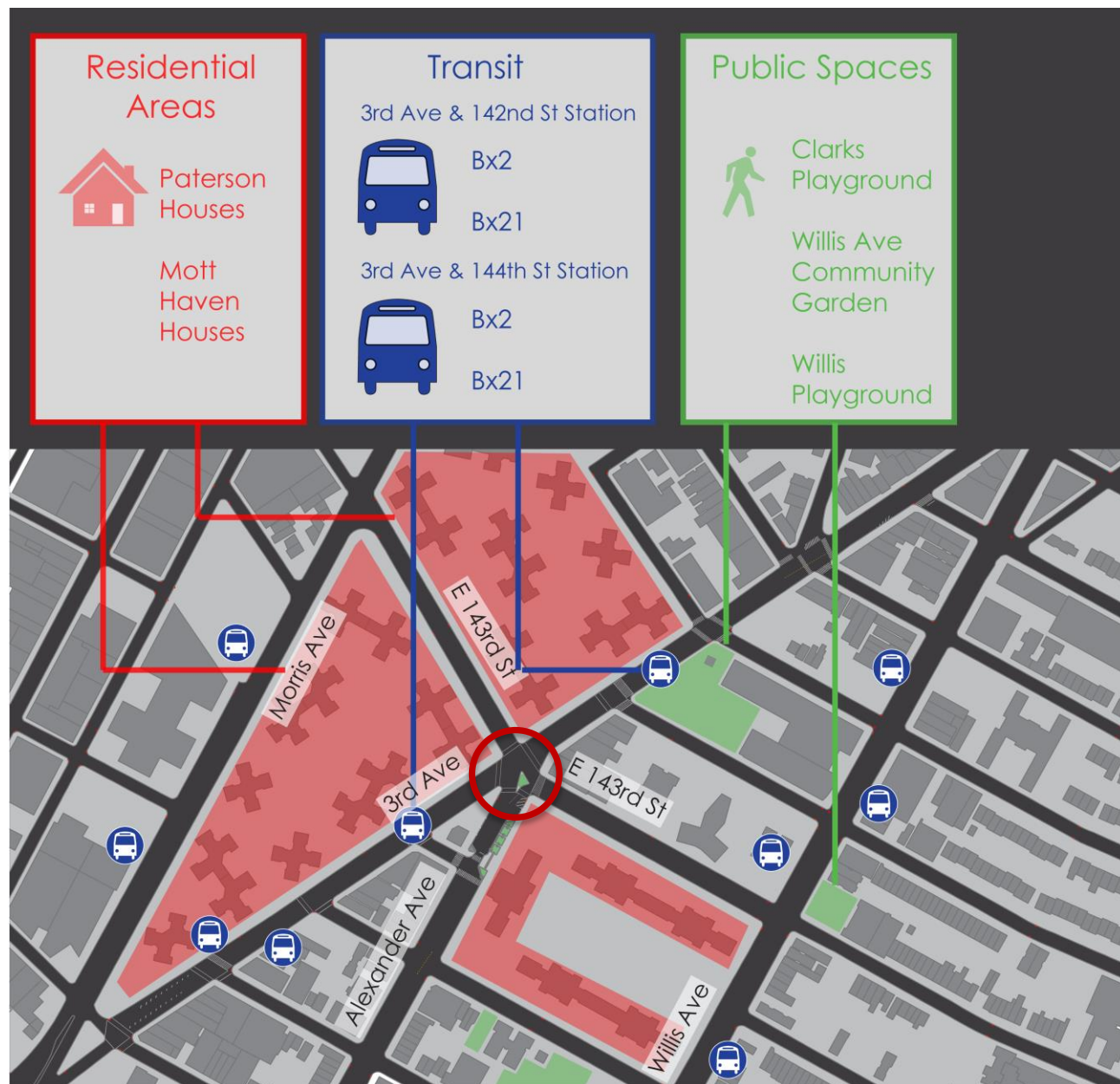
3RD AVE AND E 143RD ST

Presentation to Bronx Community Board 1

June 12, 2017

PROJECT AREA

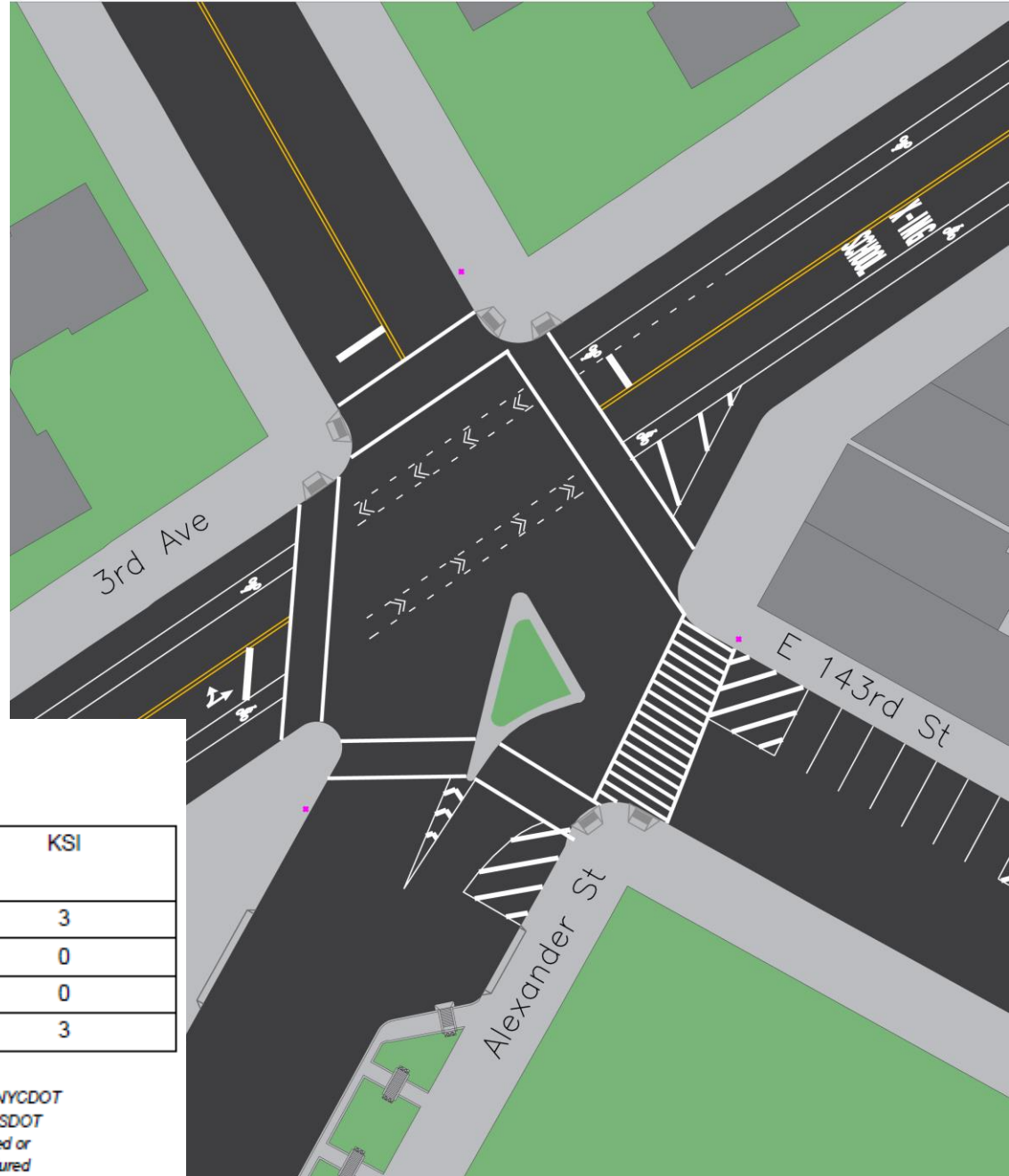
- High Density Residential Area
- Nearby Schools
- Close to Public Transportation
- Close to Playgrounds and Public Spaces



PROJECT BACKGROUND

- 3rd Ave is a **Vision Zero Priority** Corridor and this intersection is a Vision Zero Priority Intersection.

- 3 Pedestrian KSI (killed or severely injured)



3rd Ave At 143rd St, BX

Injury Summary, 2011-2015 (5 Years)

	Total Injuries	Severe Injuries	Fatalities	KSI
Pedestrian	7	3	0	3
Bicyclist	2	0	0	0
Motor Vehicle Occupant	14	0	0	0
Total	23	3	0	3

Fatalities, 01/01/2011-1/9/2017 : None

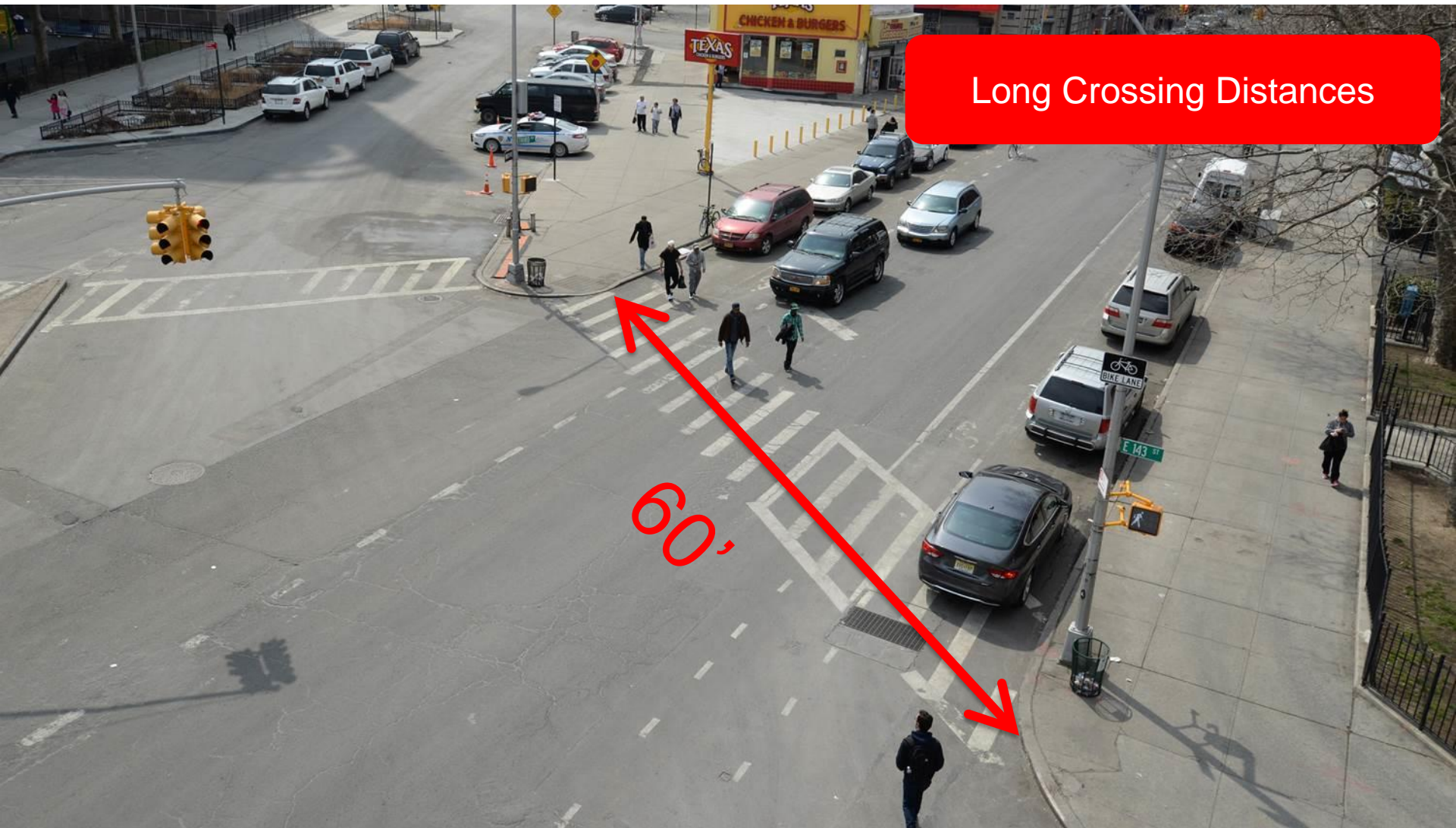
Source: Fatalities: NYCDOT
Injuries: NYSDOT
KSI: Persons Killed or
Severely Injured

EXISTING CONDITIONS

Crosswalks do not follow pedestrian desire lines

Non-ADA compliant Triangle

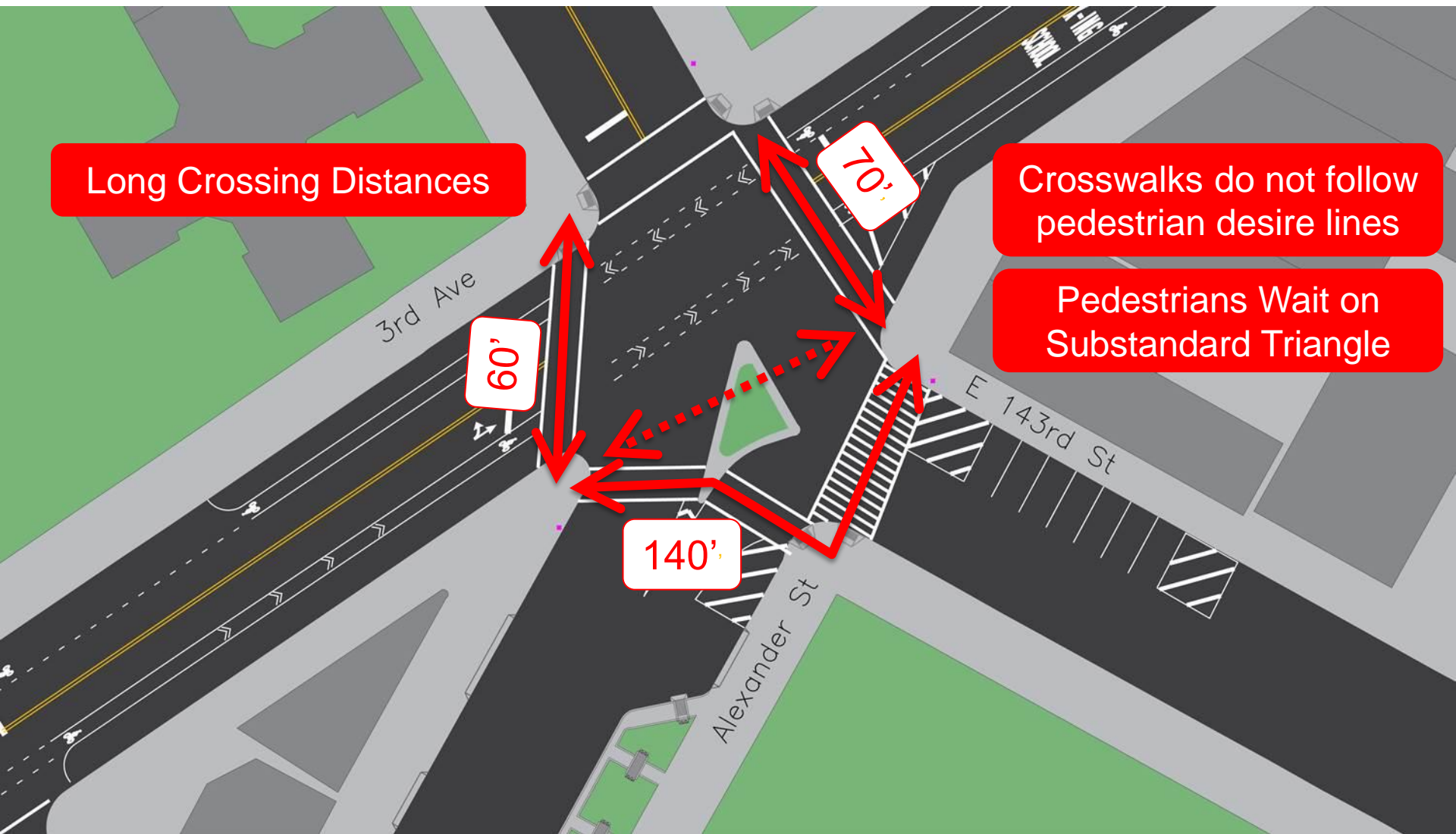
EXISTING CONDITIONS



Long Crossing Distances

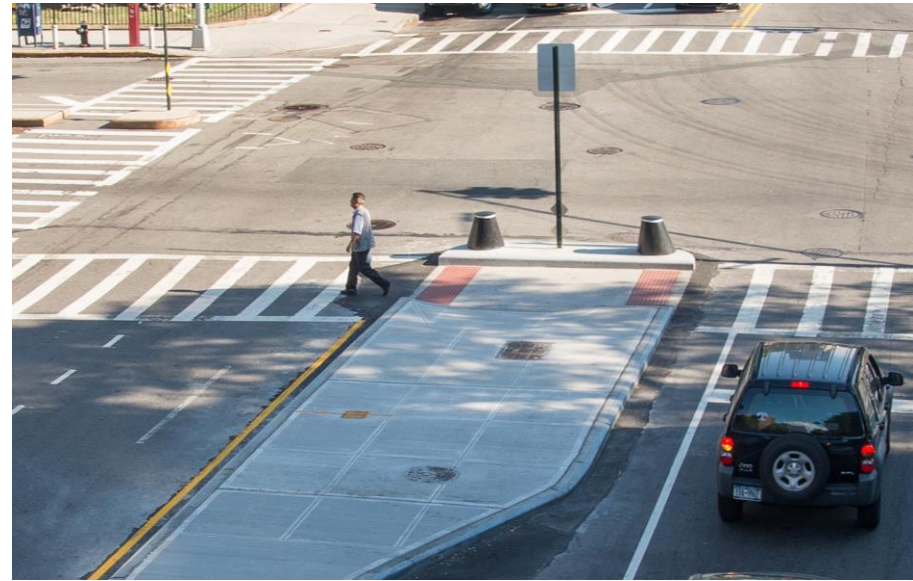
60'

EXISTING CONDITIONS

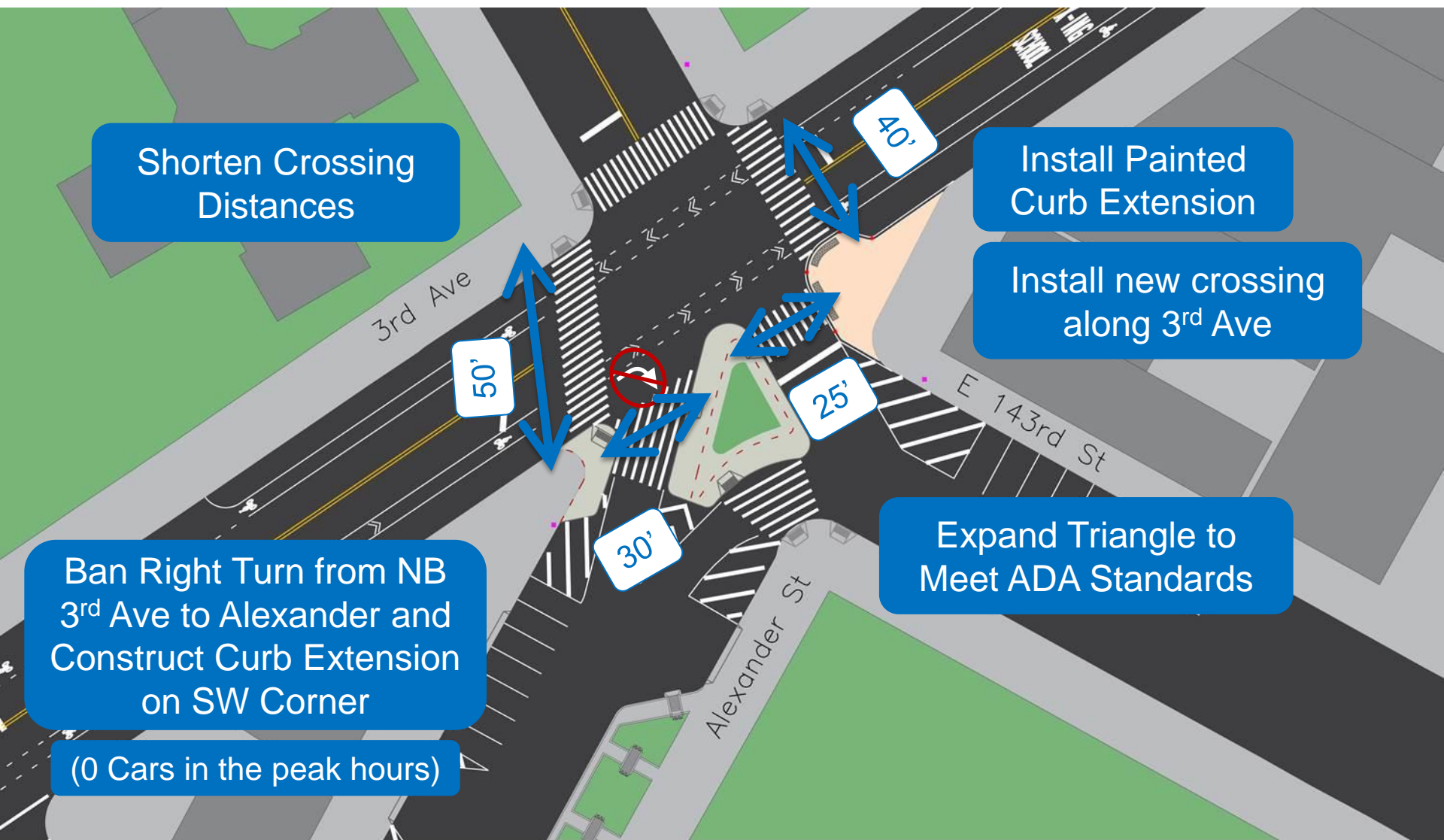


RAPID RESPONSE TOOLKIT

- Concrete Safety Islands
- Pavement markings
- Signal timing changes
- Signage
- Painted Surfaces

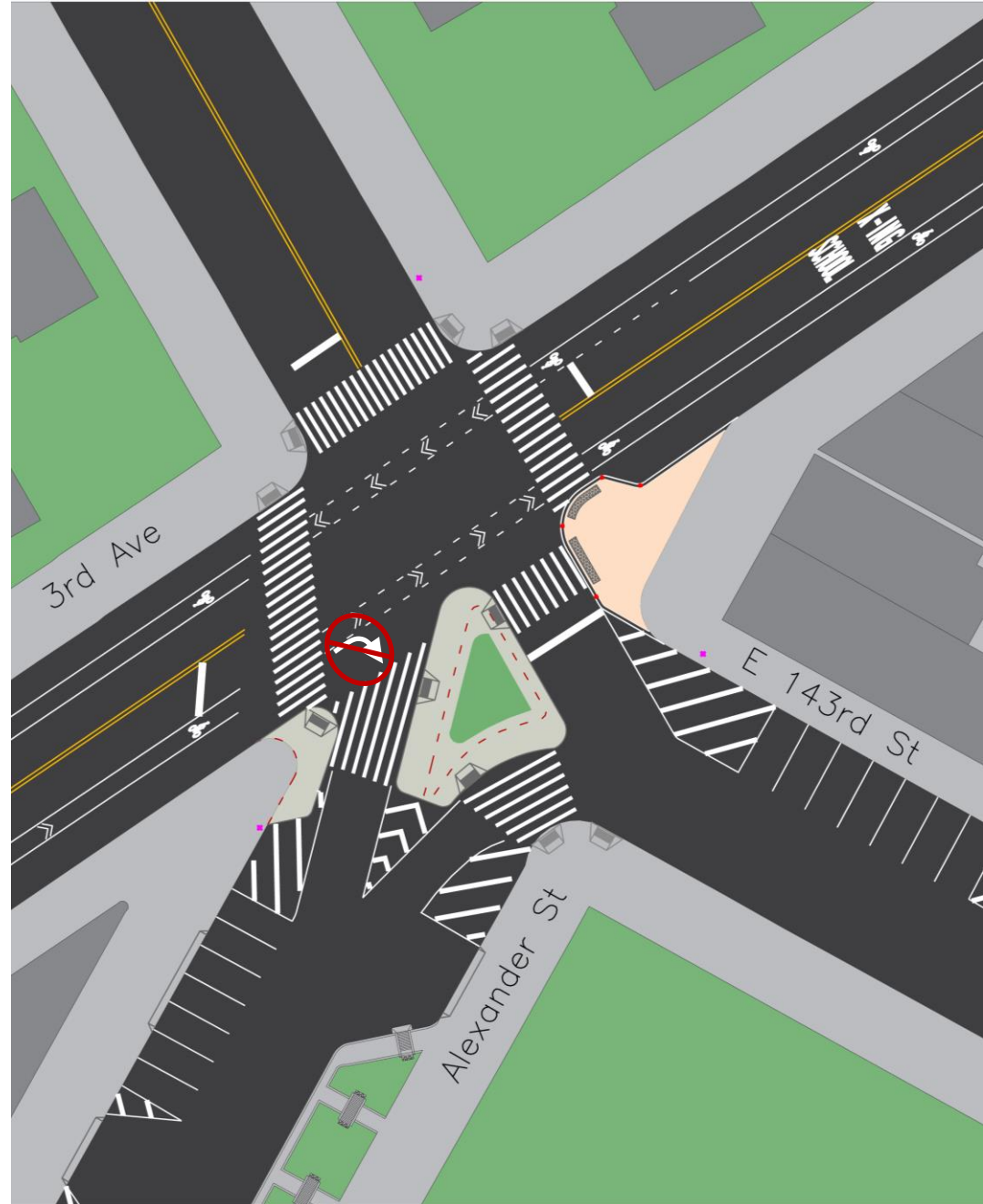


PROPOSED CONDITIONS



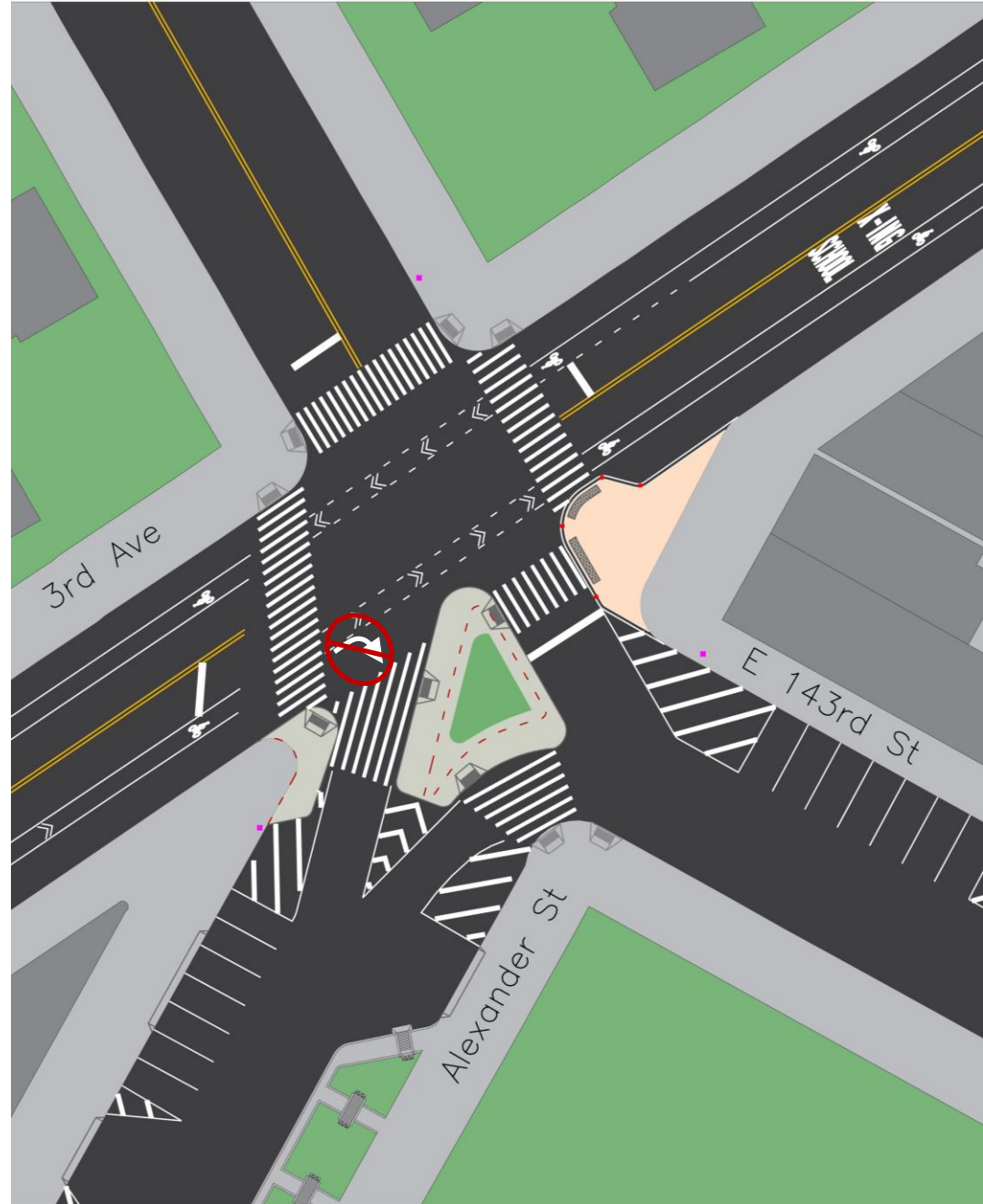
SUMMARY

- Expand existing triangle
- Install new crosswalk across 143rd St
- Construct concrete curb extension on SW corner
- Paint curb extension on SE corner
- Ban 3rd Ave EB right turn to Alexander



BENEFITS

- Direct crossing across 143rd St on south side of 3rd Ave
- ADA accessible triangle
- Shorter crossings across 3rd Ave



THANK YOU!

Questions?



NYC DOT



NYC DOT



nyc_dot



NYC DOT