



4TH AVE AND ATLANTIC AVE

Project Details

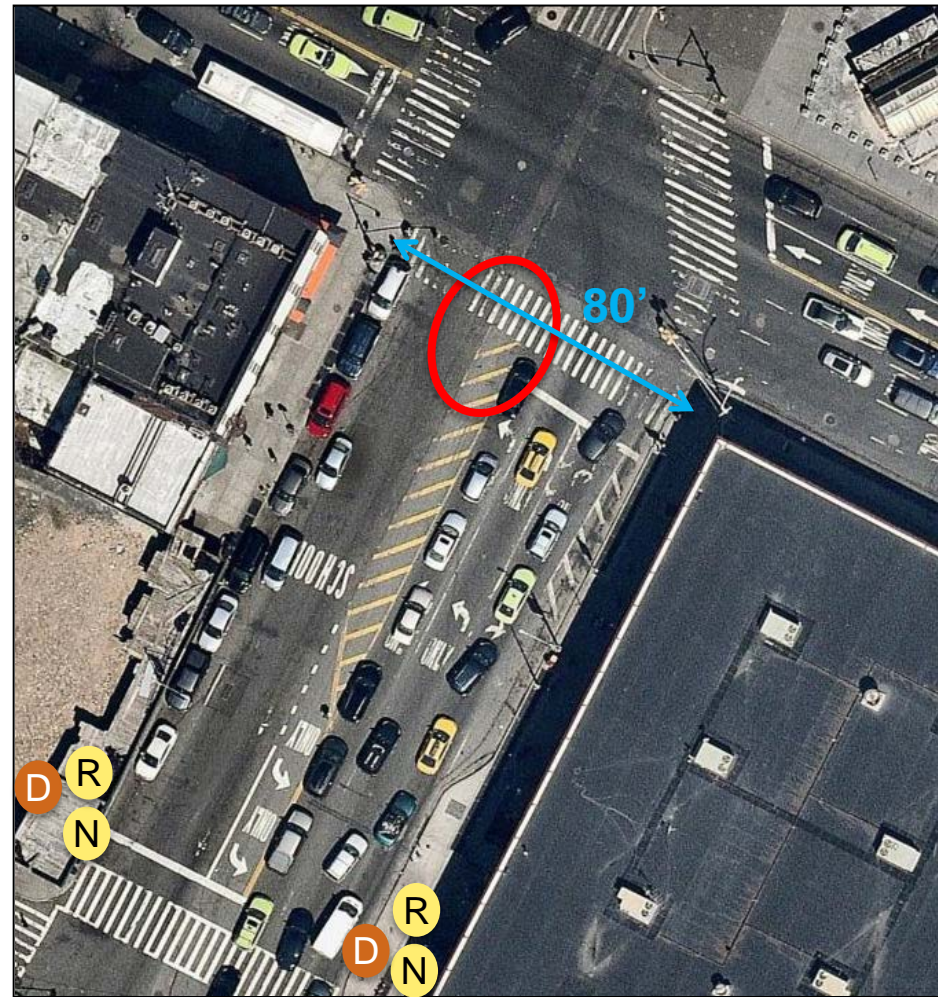
Presented to CB2, January 19th, 2017



BEFORE CONDITIONS

4th Ave and Atlantic Ave

- High Crash Intersection
- Long Crossing (80')
- Subway infrastructure made concrete island difficult to install
- Vision Zero Priority Area and Corridors



4th Ave At Atlantic, BK
Injury Summary, 2010-2014 (5 Years)

	Total Injuries	Severe Injuries	Fatalities	KSI
Pedestrian	12	1	0	1
Bicyclist	4	0	0	0
Motor Vehicle Occupant	72	4	0	4
Total	88	5	0	5

Fatalities, 01/01/2010-11/8/2016 : None

Source: Fatalities: NYCDOT
Injuries: NYSDOT
KSI: Persons Killed or Severely Injured

RUBBER ISLAND INSTALLATION

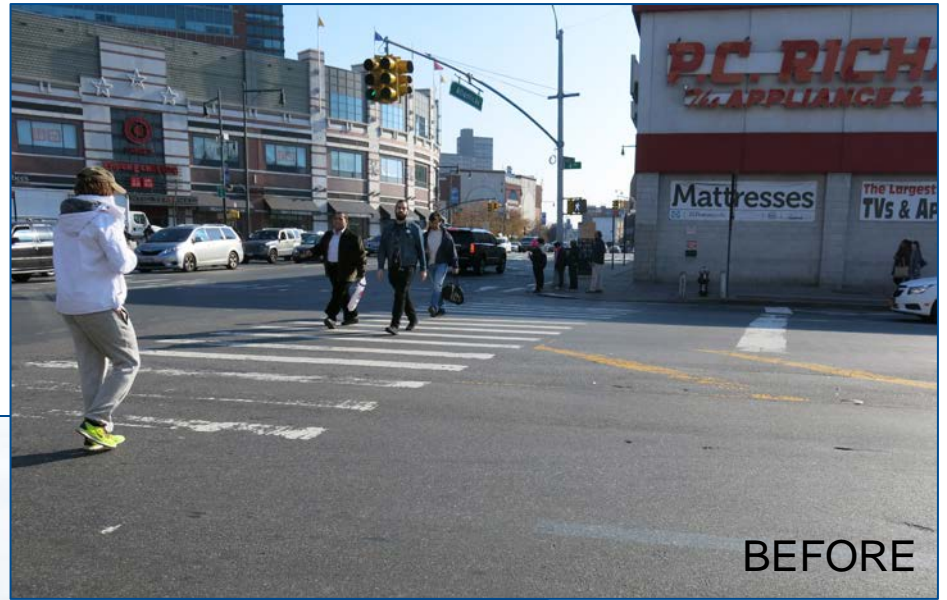
Installed December 15th, 2016

- 2016 Pilot treatment in NYC
- Quick 3 1/2 hour installation
- Typical Signs on island
- Island screwed directly into asphalt, no excavation
- Can be installed in any weather condition
- No operational changes

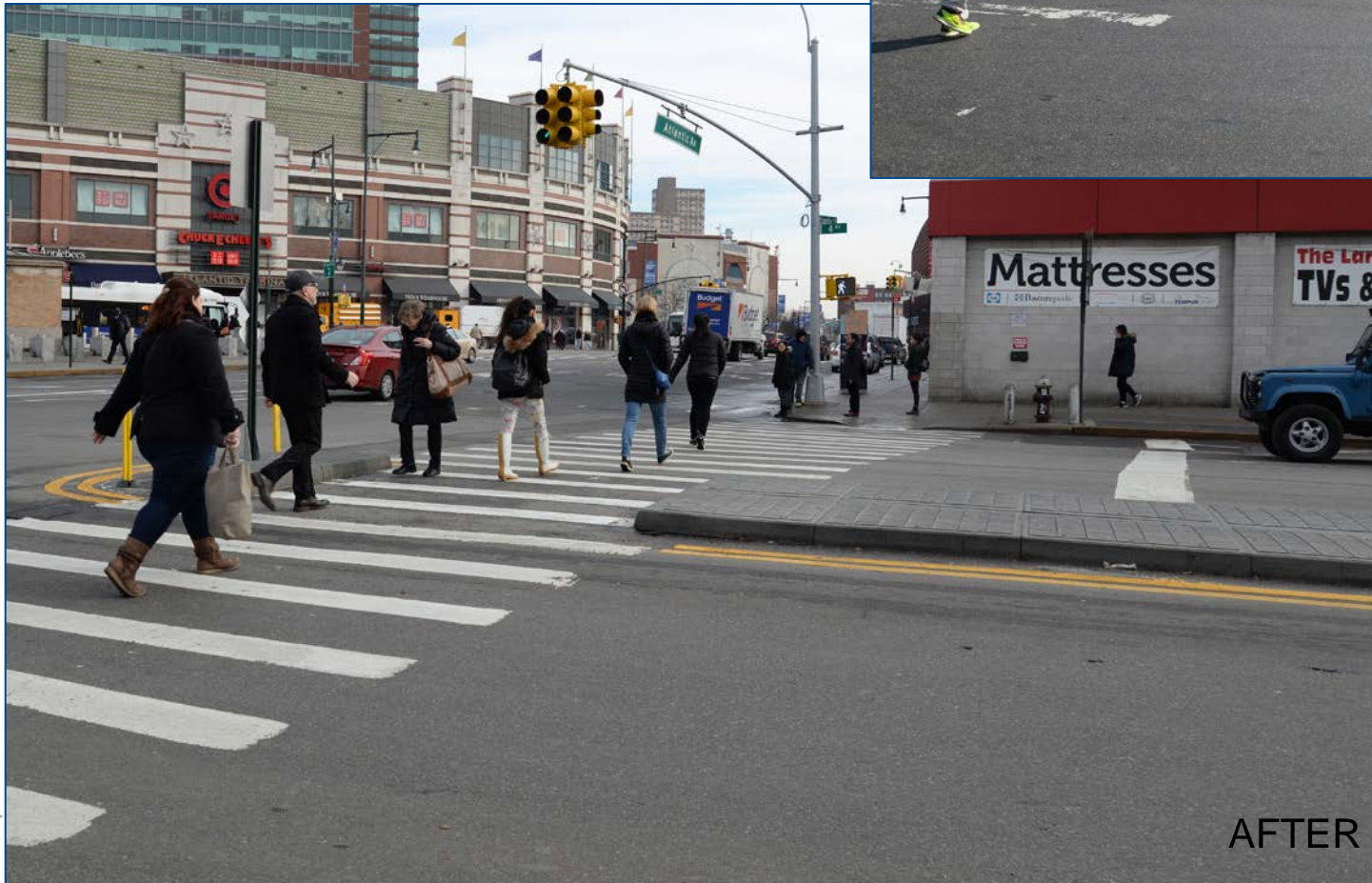
Benefits

- Safer and shorter two-part pedestrian crossing
- Rapid response at Vision Zero area and corridors





BEFORE



AFTER

THANK YOU!

Questions?



NYC DOT



NYC DOT



nyc_dot



NYC DOT