



BEACH CHANNEL DRIVE AND FAR ROCKAWAY BLVD

Presentation to CB 14 Transportation Committee

May 22, 2018

Project Background

1

PROJECT AREA

- Access to Opportunity Transportation and Housing Study in the Eastern Rockaways started in fall 2015
- HPD to develop Edgemere sites
- Bayswater Park to be redesigned in 2018
- Multiple nearby schools
- A Train Beach 36 Street Edgemere Station
- Bus Stops for the Q22, QM17, and NYC Ferry Shuttle Bus



PROJECT AREA

- Residential neighborhood with some commercial retail
- Beach Channel Senior Housing to be completed in summer 2018
- Beach Channel Shopping Center



Existing Conditions

2

EXISTING SLIP LANE

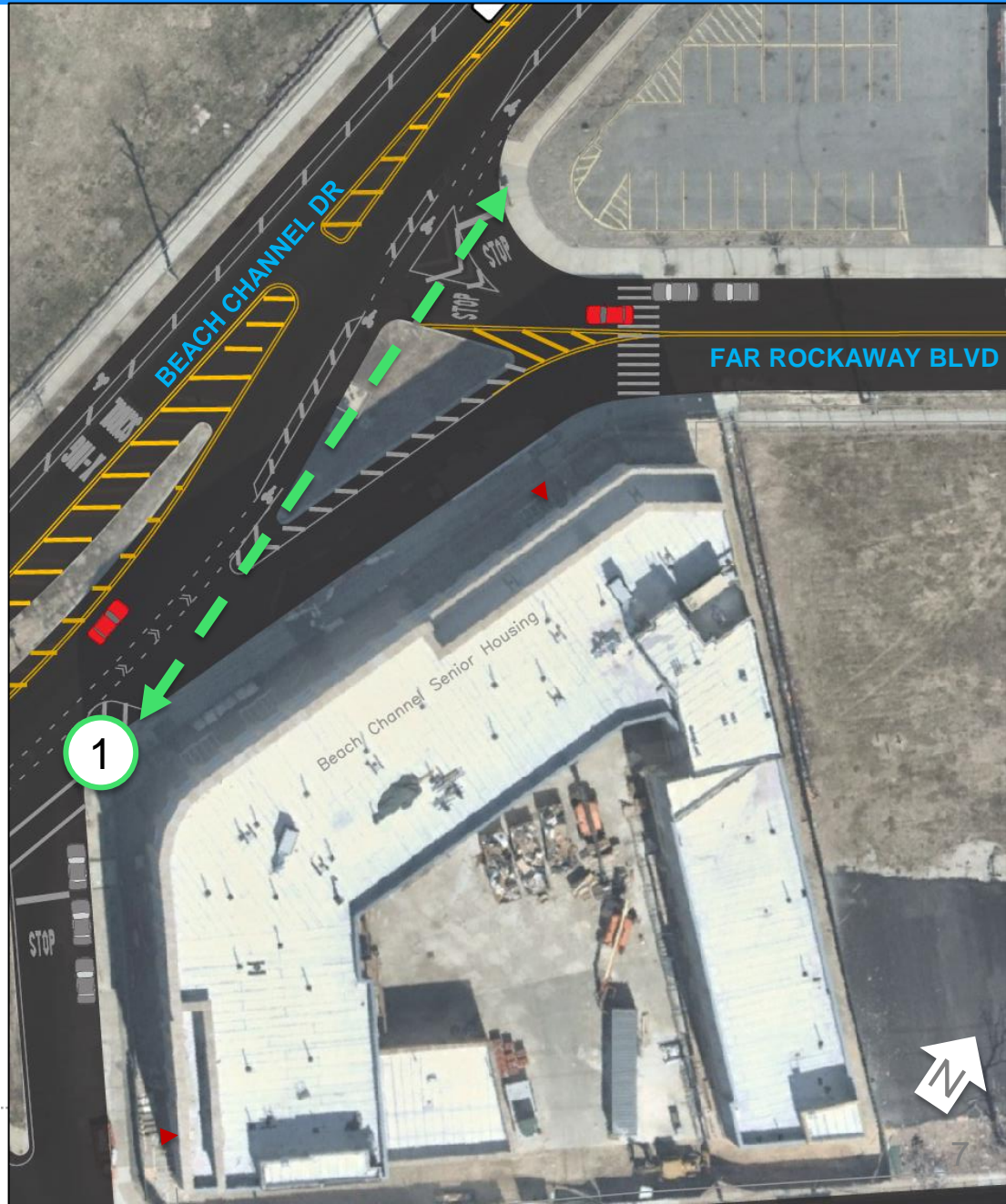
Slip lane over-complicates
vehicular and pedestrian
movements



EXISTING SLIP LANE

Slip lane over-complicates
vehicular and pedestrian
movements

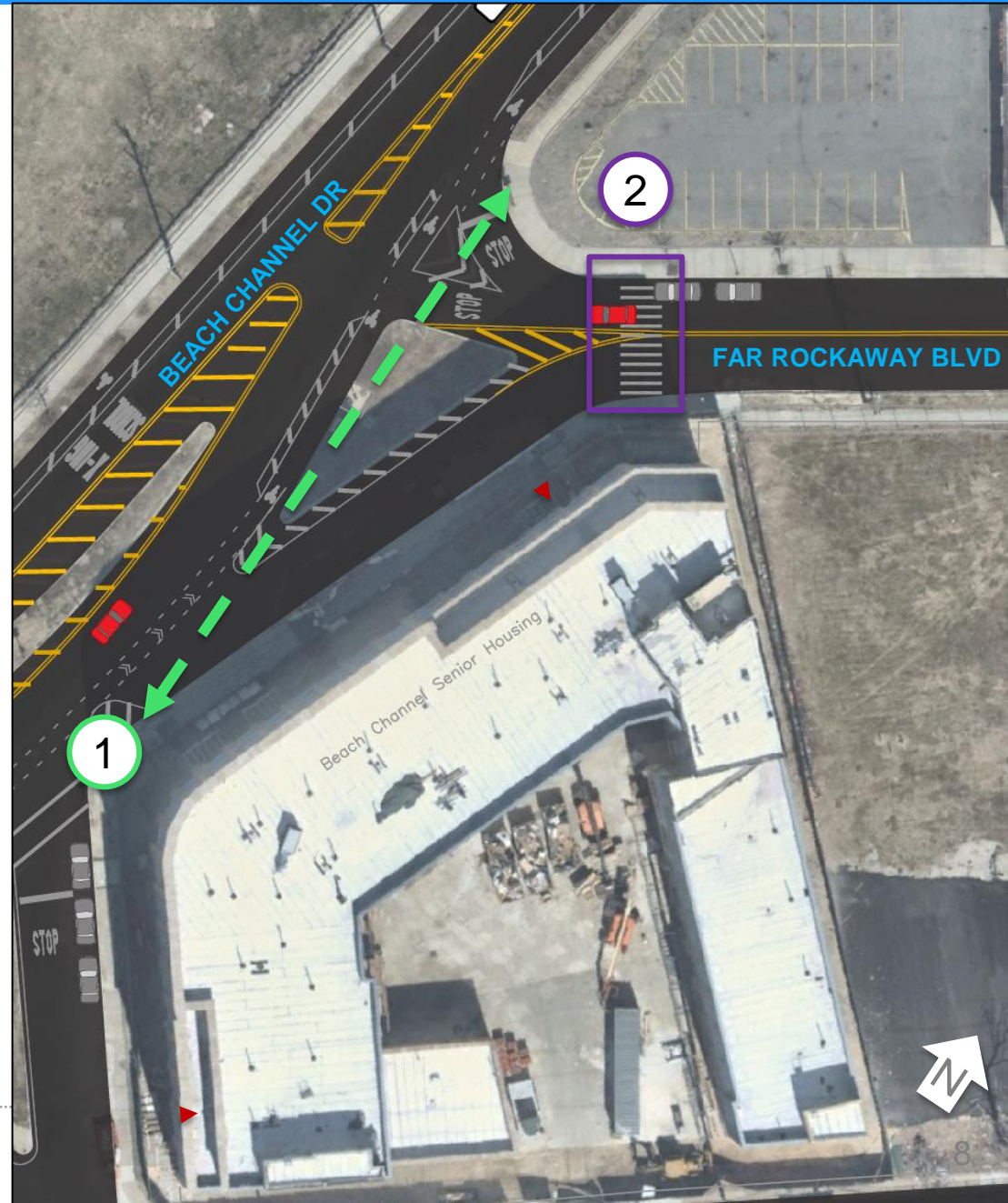
- 1 No continuous pedestrian access along Beach Channel Drive



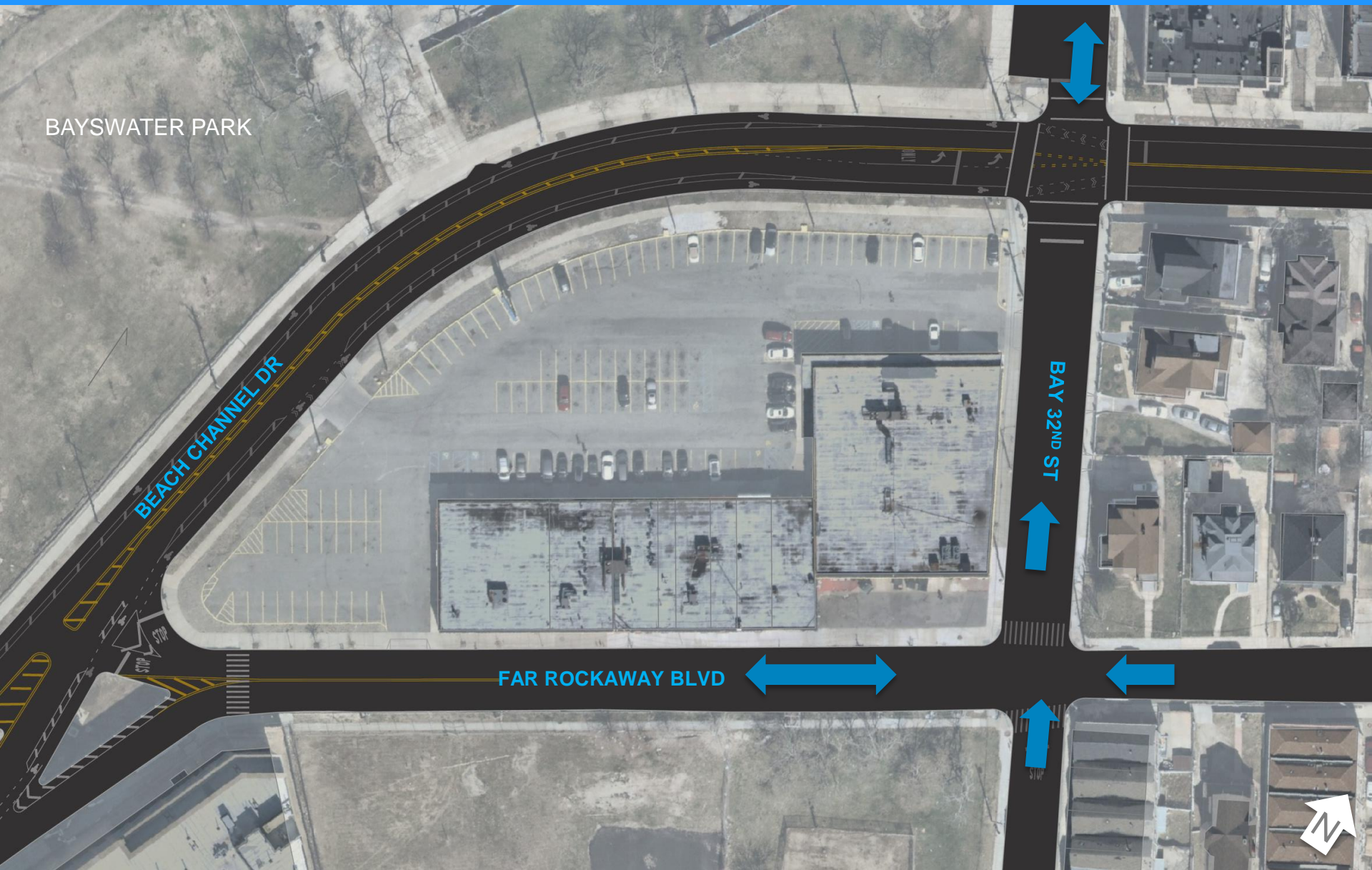
EXISTING SLIP LANE

Slip lane over-complicates
vehicular and pedestrian
movements

- ① No continuous pedestrian access along Beach Channel Drive
- ② Uncontrolled crosswalk on Far Rockaway Blvd



EXISTING STREET NETWORK



EXISTING STREET NETWORK – BAY 32ND ST

BAYSWATER PARK

Bay 32nd St become two-way
north of Beach Channel Drive

BEACH CHANNEL DR

FAR ROCKAWAY BLVD

Street widens 10' north of Far
Rockaway Blvd

BAY 32ND ST

39'

29'



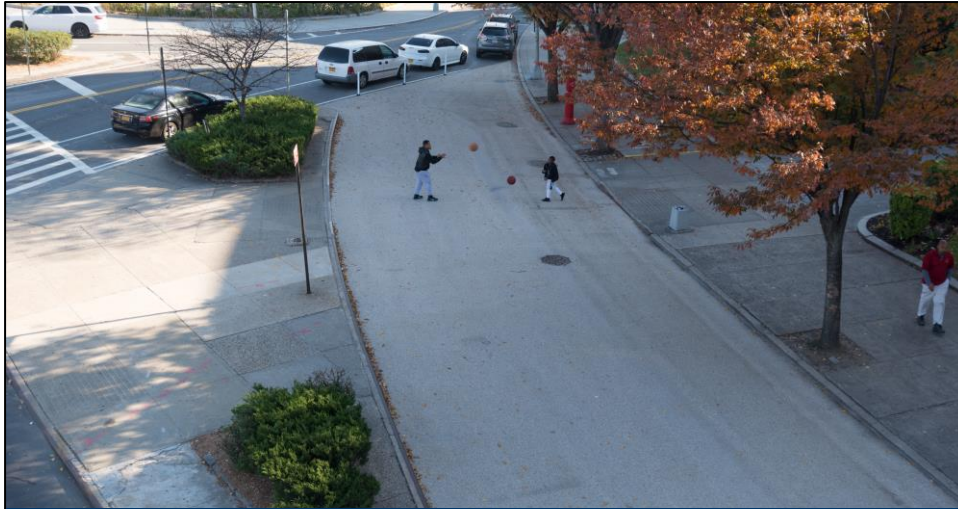
EXISTING STREET NETWORK – FAR ROCKAWAY BLVD



Proposal

3

TOOLKIT



Painted Slip Closure



Granite Blocks



Traffic + Parking Regulations



Flexible Delineators

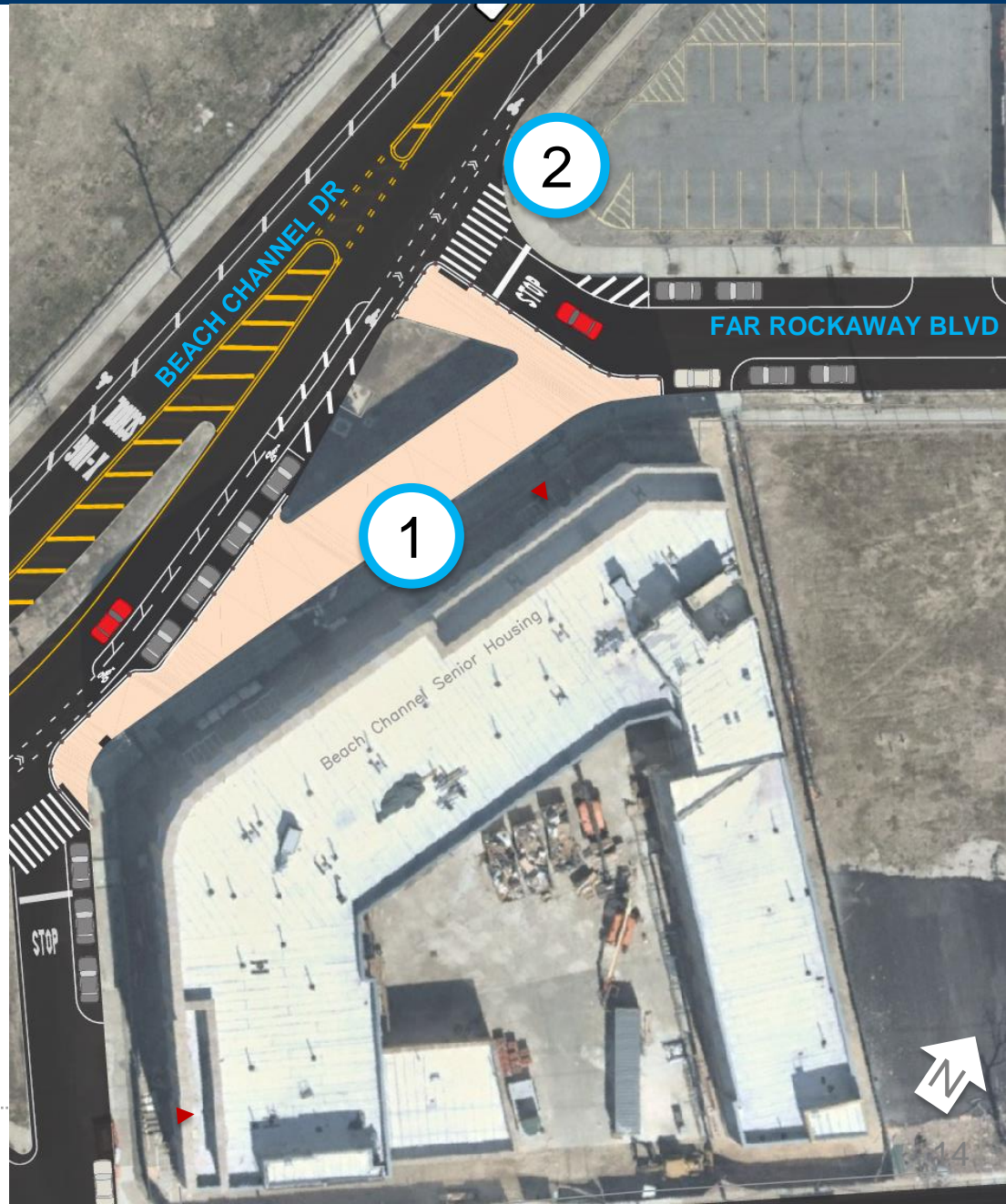
PROPOSED FAR ROCKAWAY BLVD

1 Close slip lane

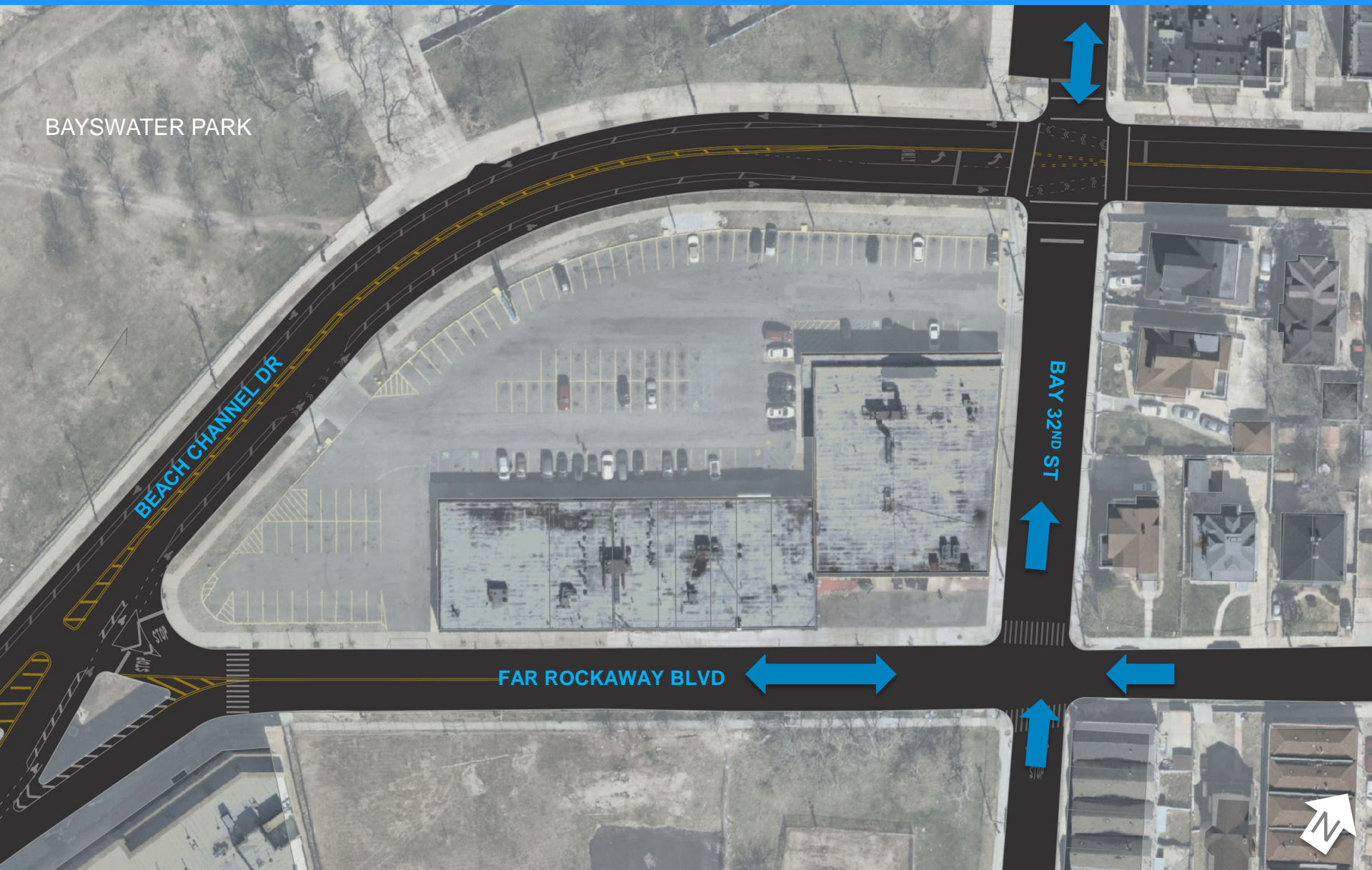
2 Relocate crosswalk to have a continuous path along Beach Channel Dr



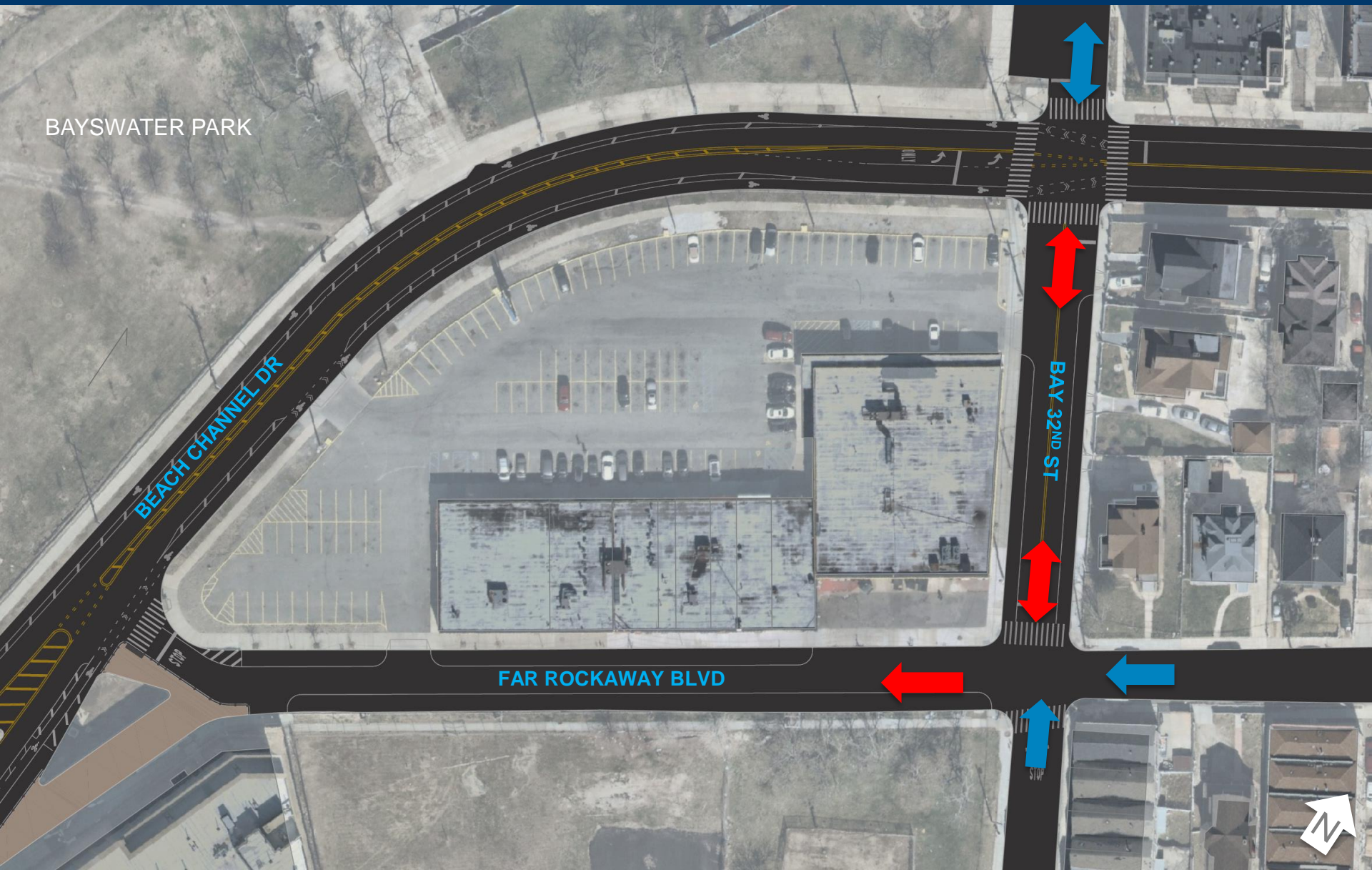
Example: Grand Concourse and 153rd St, BX



EXISTING STREET NETWORK



PROPOSED STREET NETWORK



BAYSWATER PARK

BEACH CHANNEL DR

FAR ROCKAWAY BLVD

BAY 32ND ST

PROPOSED STREET NETWORK – BAY 32ND ST



PROPOSED STREET NETWORK – FAR ROCKAWAY BLVD



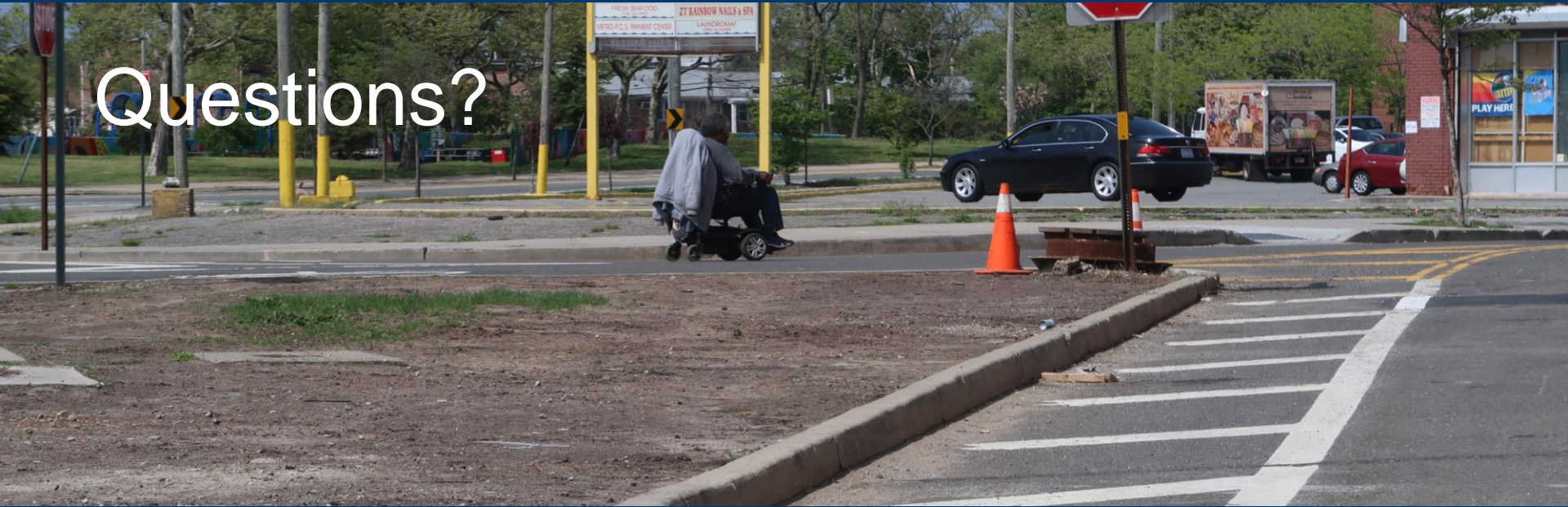
BENEFITS

- Simplifies vehicular network
- Improves pedestrian access



THANK YOU!

Questions?



NYC DOT



NYC DOT



nyc_dot

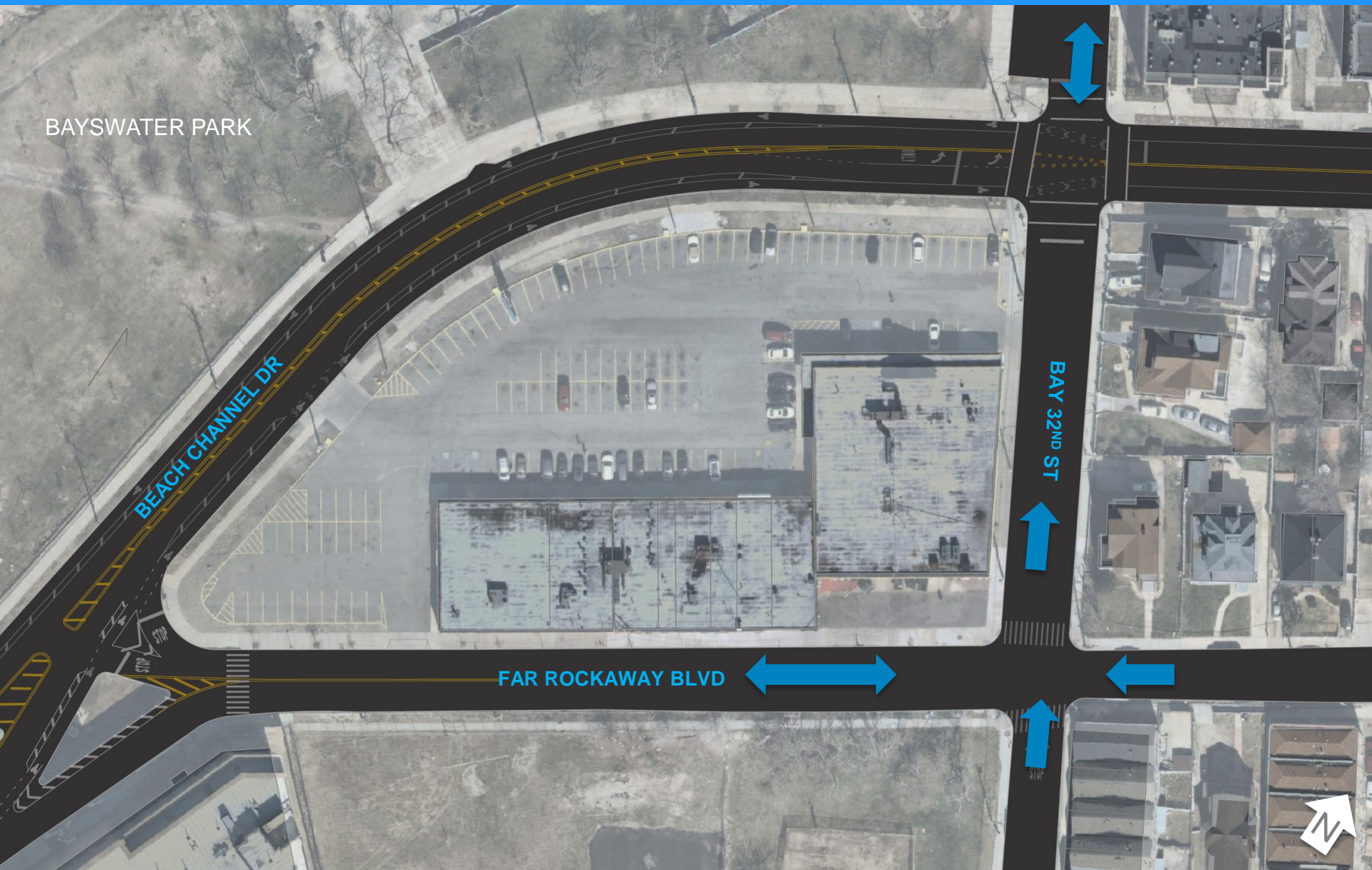


NYC DOT

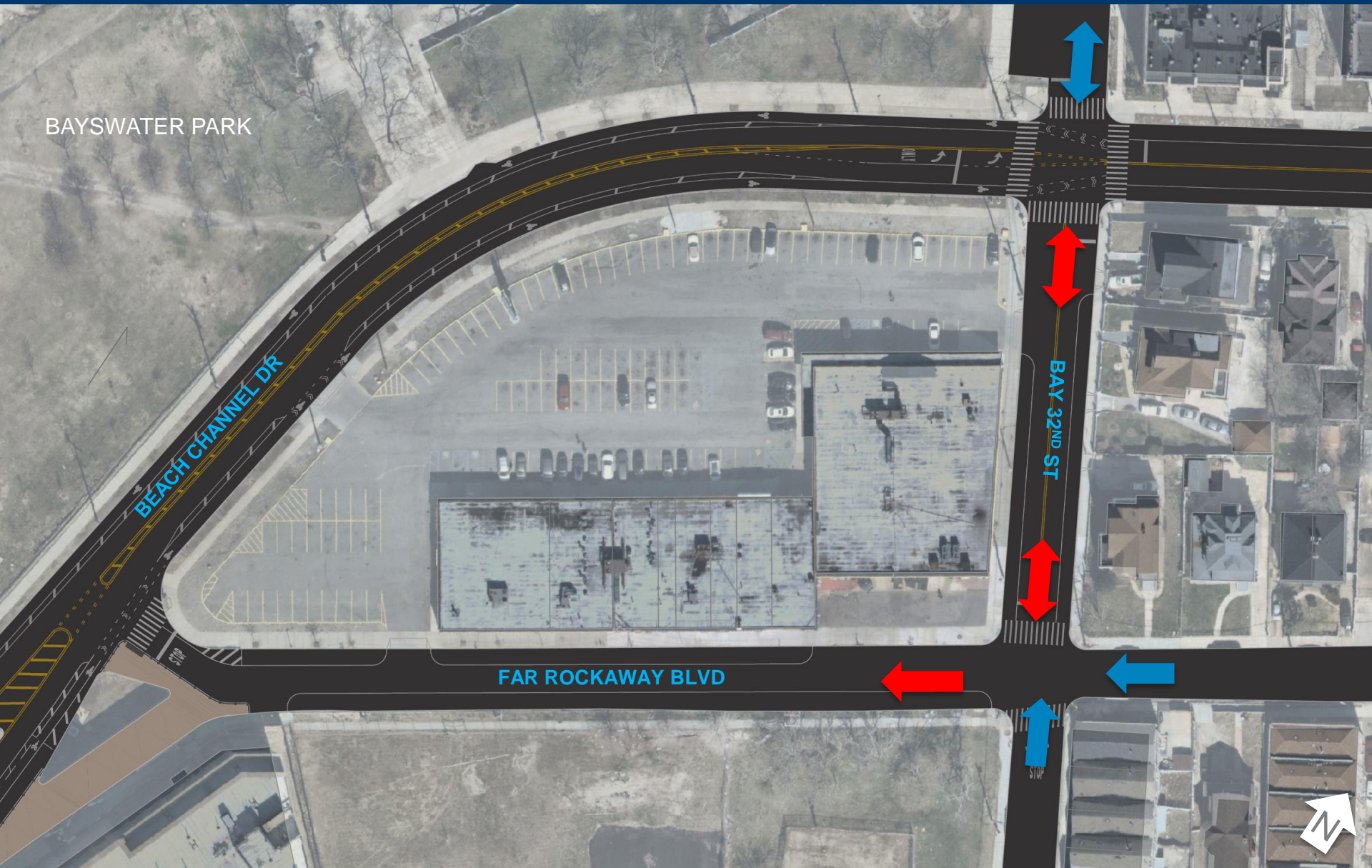
SUMMARY

- Close slip lane from Beach Channel Drive to Far Rockaway Blvd in paint
- Relocate crosswalk on Far Rockaway Blvd to create a continuous path along Beach Channel Drive
- Make Far Rockaway Blvd between Beach Channel Drive and Bay 32nd St one-way westbound
- Make Bay 32nd two-way from Beach Channel Drive to Far Rockaway Blvd

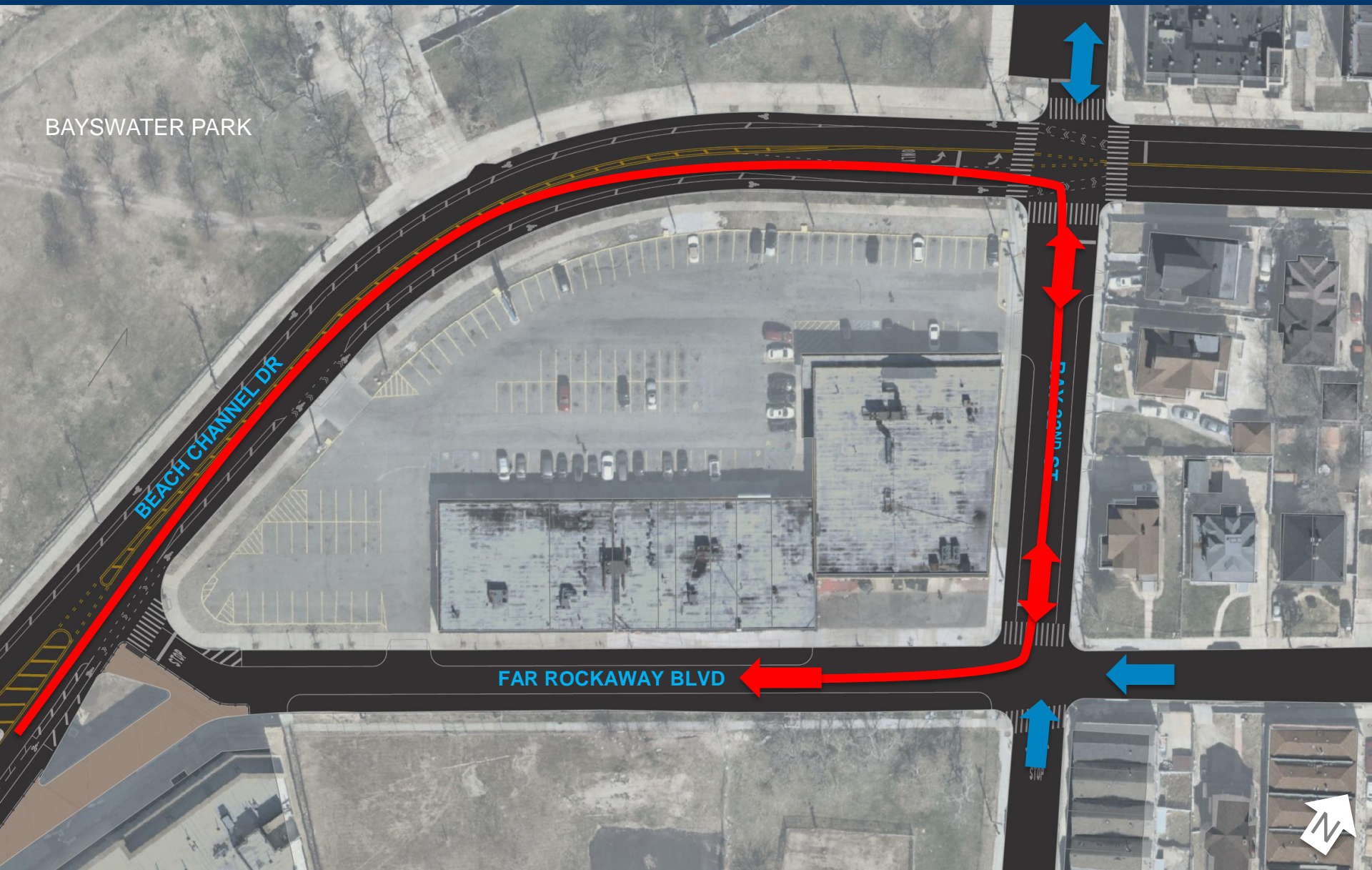
APPENDIX - EXISTING STREET NETWORK



APPENDIX - PROPOSED STREET NETWORK

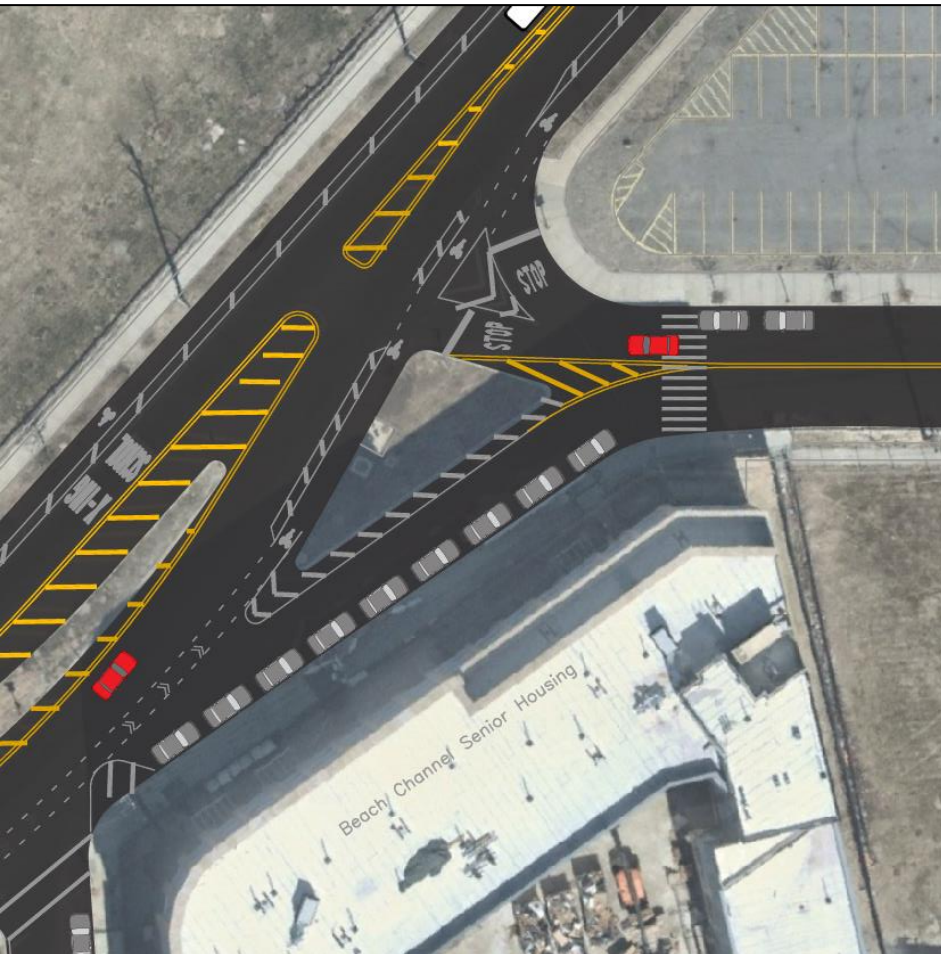


APPENDIX – DIVERSION DIAGRAM



APPENDIX - PARKING

Existing



Proposed



Net loss of 5 spaces

APPENDIX – PARKING UTILIZATION

Sunday, April 12, 2015



Monday, Oct 26, 2015



Monday, July 31, 2017



Sunday, April 8, 2018



Parking in the immediate area remains under-utilized