

Jamaica Ave at Jackie Robinson Pkwy

Intersection Safety and Mobility Improvements

2016



**VISION
ZERO**

NEW YORK CITY



New York City Department of Transportation
Office of Research, Implementation and Safety
Presented to Brooklyn Community Board 5 on Monday, April 11th, 2016

Project Location

Five-legged intersection where the Jackie Robinson Pkwy starts/ends

Adjacent to MTA East New York Bus Depot on Jamaica Ave

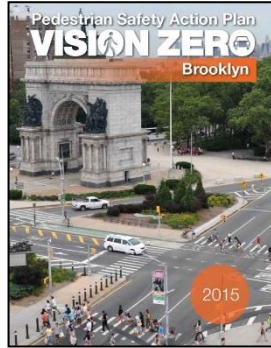
Alabama Ave J/Z subway station and Broadway Junction A/C/J/Z/L subway stations nearby

MTA
East New York
Bus Depot

Alabama Ave
J Z Station



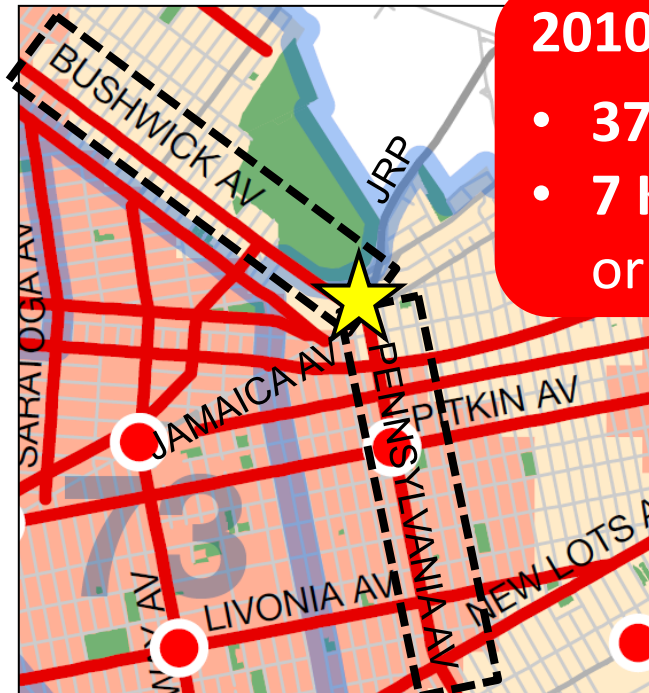
Vision Zero Priority & Safety Data



Jamaica Ave At Jackie Robinson Pkwy, BK

Injury Summary, 2010-2014 (5 Years)

	Total Injuries	Severe Injuries	Fatalities	KSI
Pedestrian	6	1	0	1
Bicyclist	2	0	0	0
Motor Vehicle Occupant	365	6	0	6
Total	373	7	0	7



2010-2014:

- 373 total injuries
- 7 KSI (persons killed or severely injured)

Very high
number of
severe injuries

- Multi-agency effort to reduce traffic fatalities in NYC
- Borough Action Plans released in 2015
- Priority Intersections, Corridors, and Areas identified for each borough:
 - Pennsylvania Ave is a Priority Corridor
 - Bushwick Ave is a Priority Corridor

Existing Conditions: Pedestrians

Pedestrians cross north side of intersection with no marked crosswalk or pedestrian signals (100ft crossing)



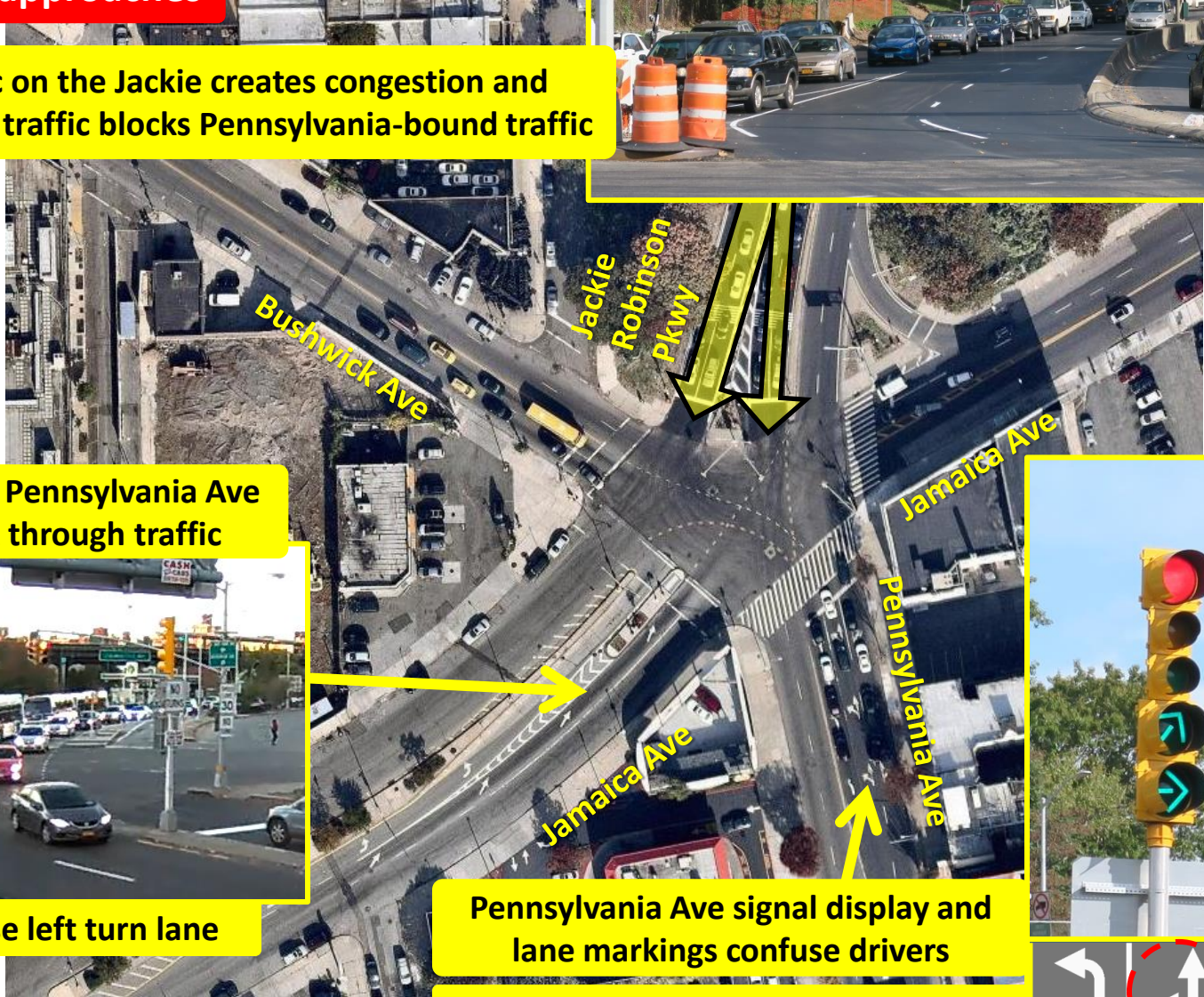
Long crossing distance on Jamaica Ave (100ft crossing)



Existing Conditions: Congestion

Congestion at all approaches

Heavy traffic on the Jackie creates congestion and Jamaica-bound traffic blocks Pennsylvania-bound traffic



Buses turning right to Pennsylvania Ave get stuck and block through traffic



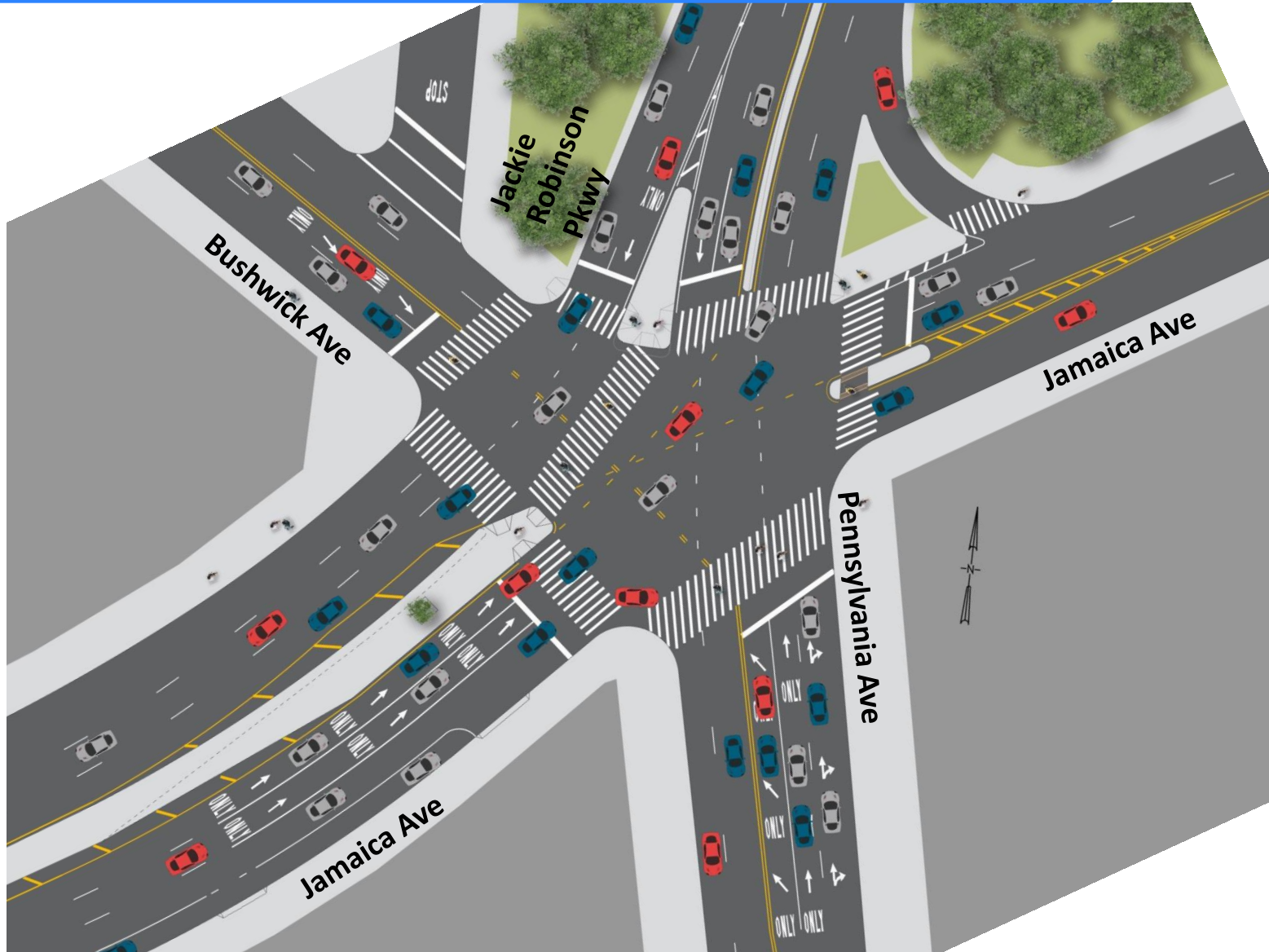
And few vehicles use left turn lane

Pennsylvania Ave signal display and lane markings confuse drivers

Left turns to Jamaica Ave block traffic



Proposed Safety Improvements

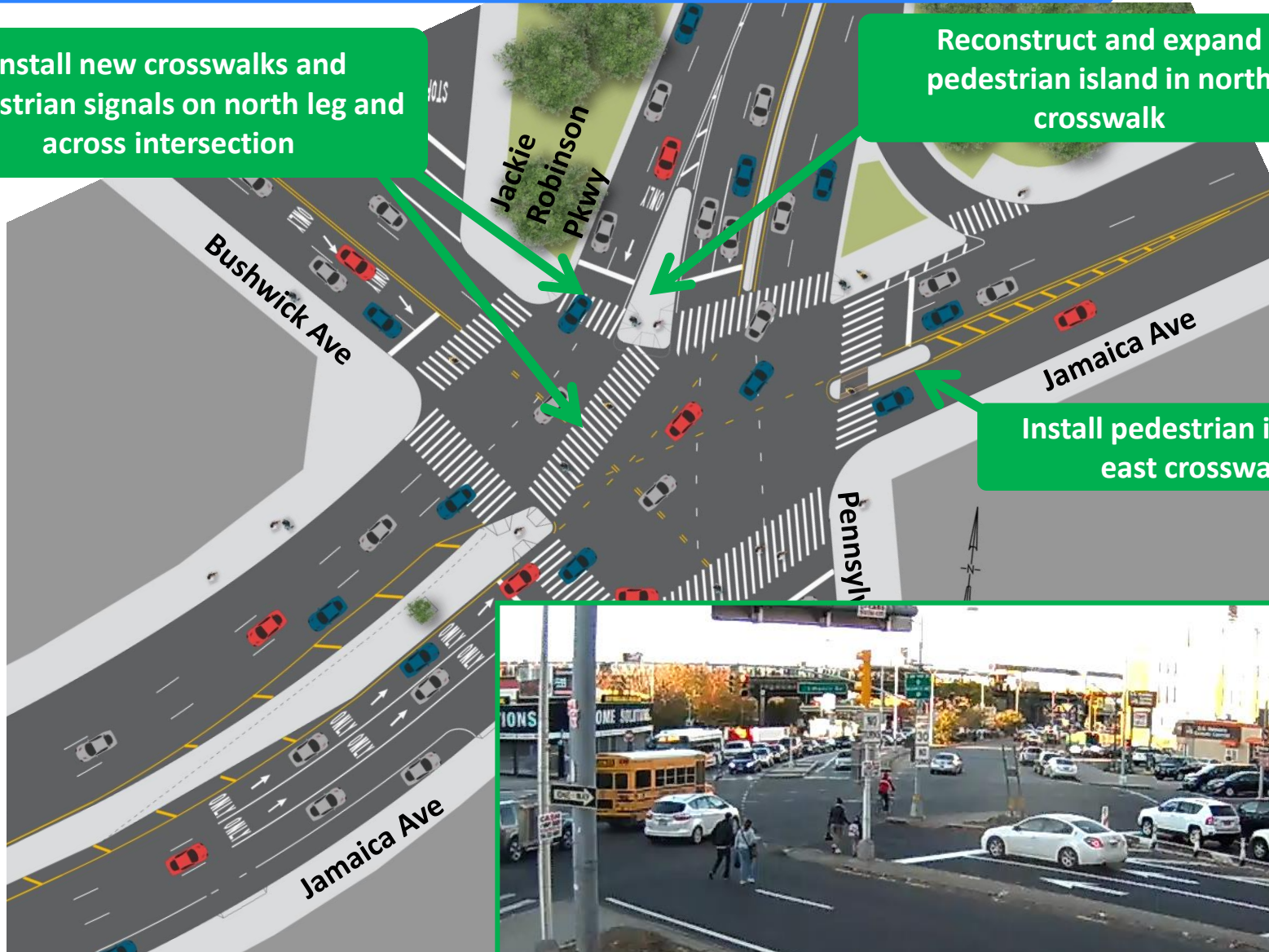


Proposed Safety Improvements

Install new crosswalks and pedestrian signals on north leg and across intersection

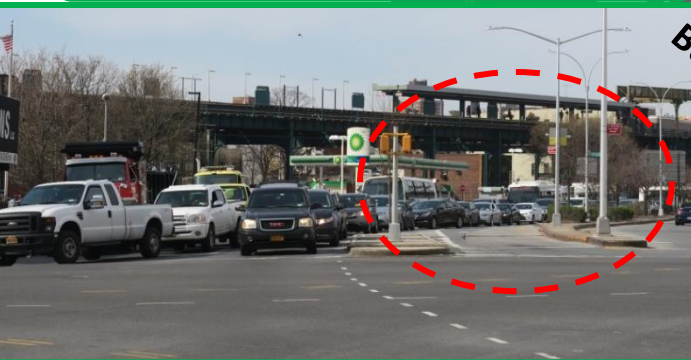
Reconstruct and expand pedestrian island in north crosswalk

Install pedestrian island in east crosswalk



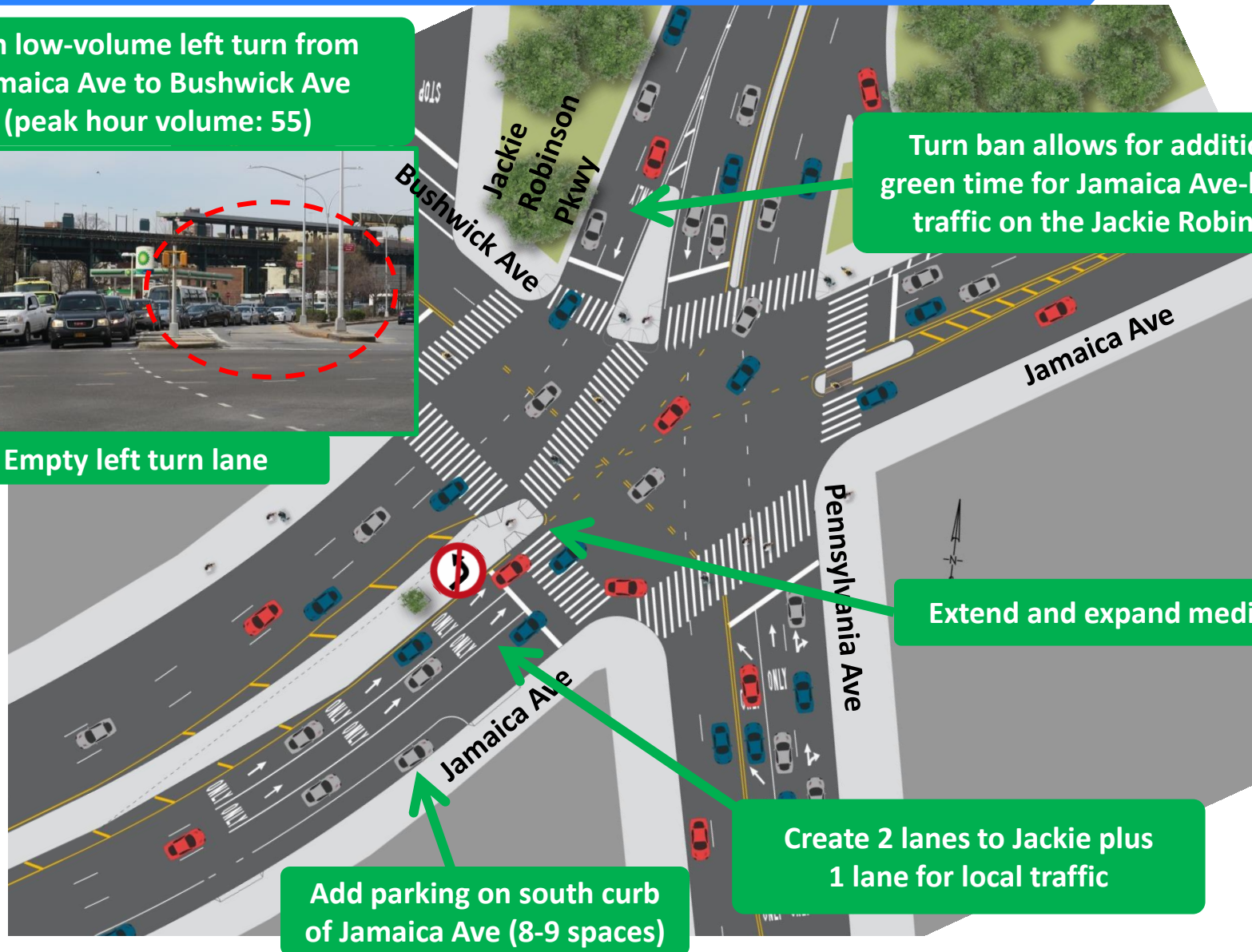
Proposed Safety Improvements

Ban low-volume left turn from
Jamaica Ave to Bushwick Ave
(peak hour volume: 55)



Empty left turn lane

Turn ban allows for additional
green time for Jamaica Ave-bound
traffic on the Jackie Robinson



Extend and expand median

Create 2 lanes to Jackie plus
1 lane for local traffic

Add parking on south curb
of Jamaica Ave (8-9 spaces)

Proposed Safety Improvements

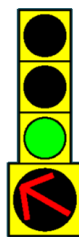
Install lane markings on
Bushwick Ave

Simplify signal display and lane
markings on Pennsylvania Ave

EXISTING



PROPOSED



Ban low-volume, sharp left turn from
Pennsylvania Ave to Jamaica Ave, majority
turning are buses (peak hour volume: 36)
(Reroute B20 B83 Q24 buses)

Change lane markings so turning
vehicles don't block through
traffic in center lane



Project Benefits

- New crosswalks and pedestrian signals:
 - Create safer crossings and accommodate pedestrian desire line
- Pedestrian islands and median extension:
 - Shorten crossing distances and create safe places for pedestrians to wait



Jackie Robinson Pkwy looking south



Jackie Robinson Pkwy looking north

Project Benefits

- Left turn ban from Jamaica Ave to Bushwick Ave:
 - Allows for additional through lane to Jackie Robinson Pkwy
 - Allows for additional green time for southbound Jackie Robinson Pkwy
- Additional green time for Jackie Robinson Pkwy heading to Jamaica Ave:
 - Reduces congestion for southbound parkway traffic
 - Prevents Jamaica Ave-bound traffic from blocking Pennsylvania Ave-bound traffic



Project Benefits

- Left turn ban from Pennsylvania Ave to Jamaica Ave:
 - Reduces conflict in intersection
 - Reduces congestion because through traffic not blocked by left turning vehicles
- Pennsylvania Ave/Bushwick Ave new signal display and lane designations:
 - Streamlines traffic movements
 - Reduces congestion and confusion



Pennsylvania Ave looking north



Pennsylvania Ave/Bushwick Ave looking west



Questions?



**Thank
You**

Contact: DOT Brooklyn Borough Commissioner's Office at (646) 892-1350