

Park Circle

Addressing Pedestrian, Vehicular, Bicycle and Equestrian Concerns



June 16, 2009
Public Workshop



NYC Department of Transportation
Traffic Management Division
Pedestrian Projects Group

Major Issues from Community Workshop

- “Expressway” look and no crosswalk at ramp
- Large pavement dividing community
- Long, indirect crossing at Prospect Park SW because of Prospect Park exit
- Unprotected crossing for equestrians and pedestrians in Circle
- Gap in the cycling network
- High vehicle speeds from wide entries & exits
- Traffic back-ups at Parkside Ave and Prospect Park SW
- Driver confusion

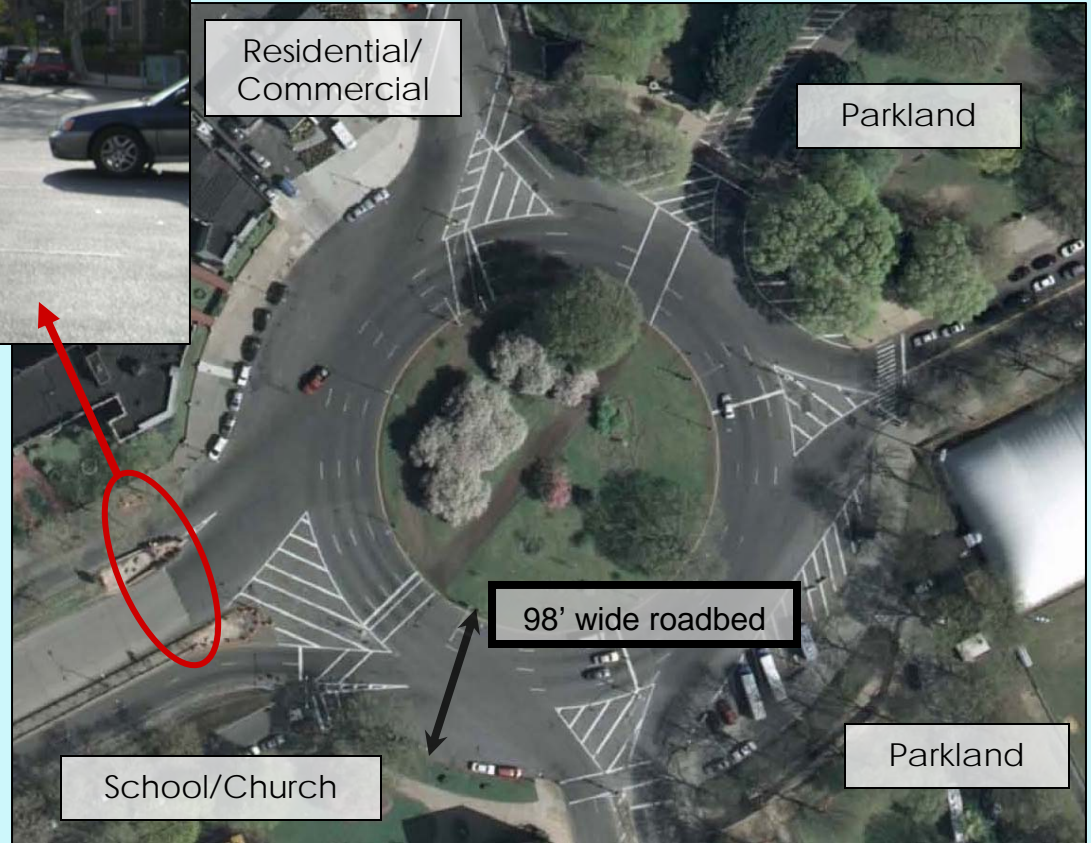


Issues: Overall



“Expressway” look at ramp

Divides community



Residential/
Commercial

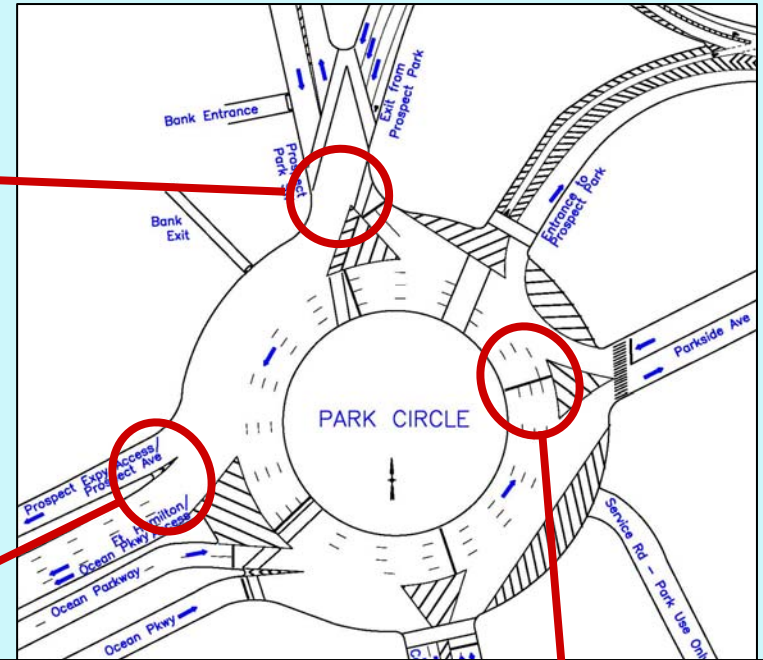
Parkland

98' wide roadbed

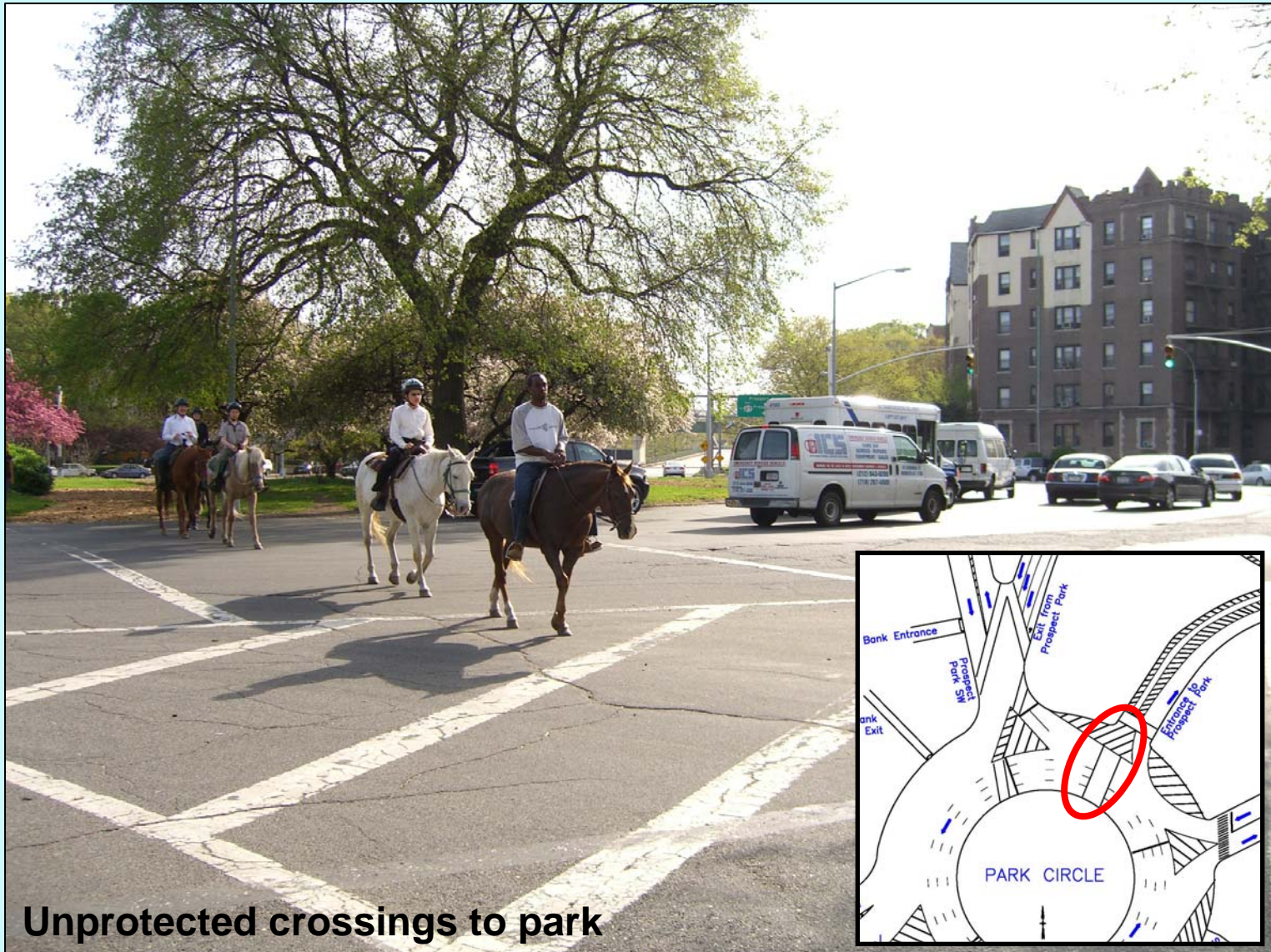
School/Church

Parkland

Issues: Pedestrian



Issues: Horses



Unprotected crossings to park

Issues: Vehicles



Driver confusion



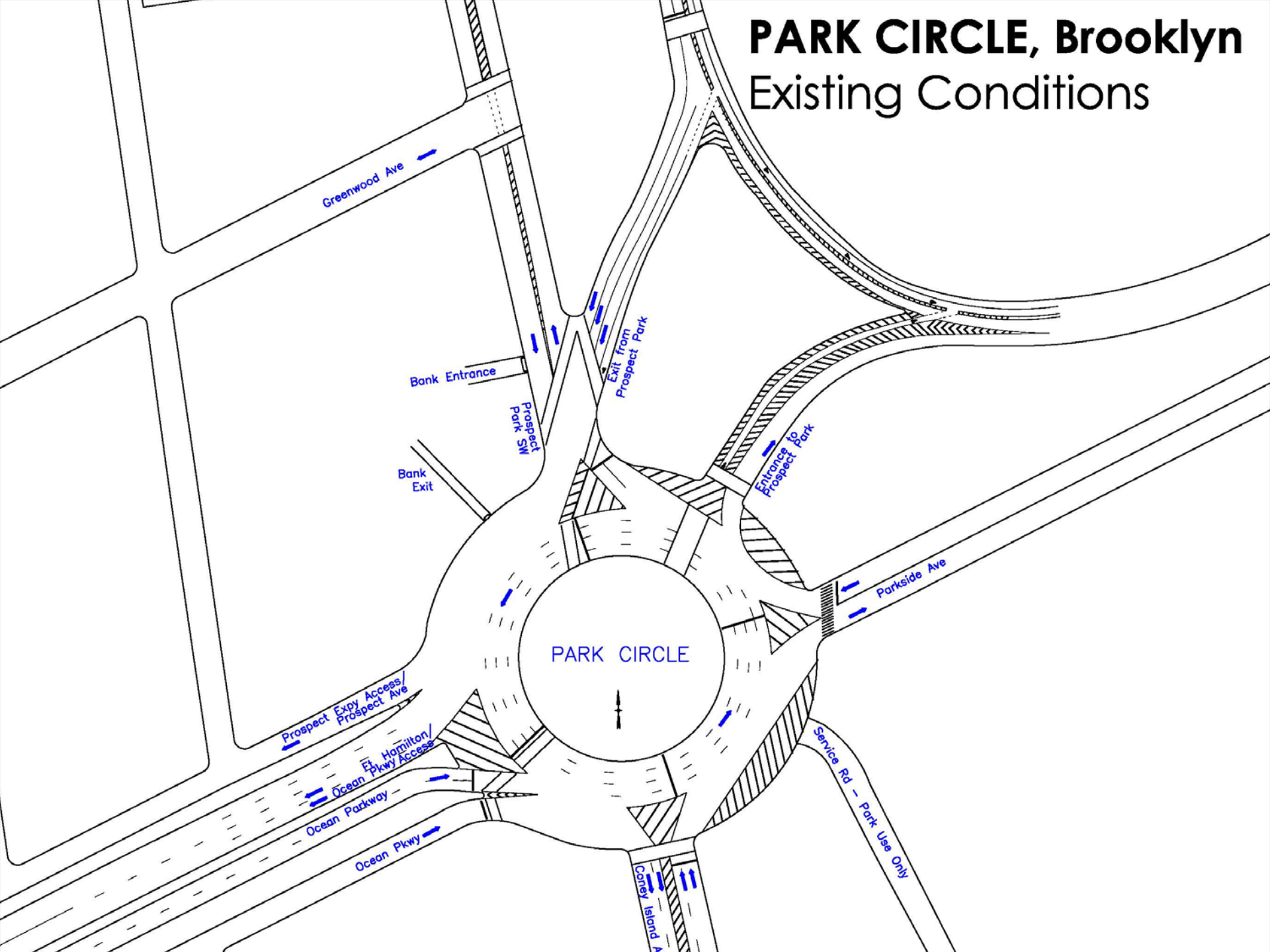
High speeds



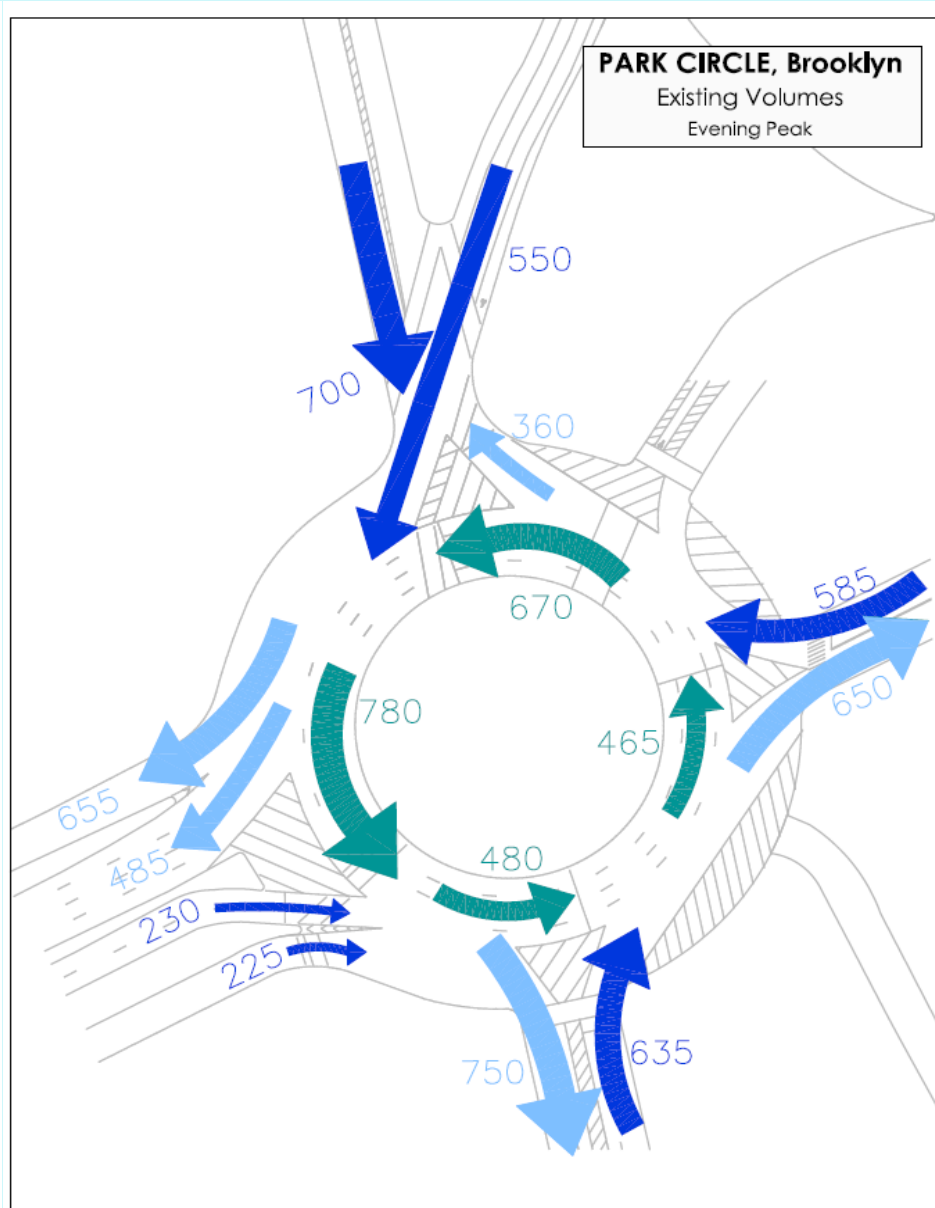
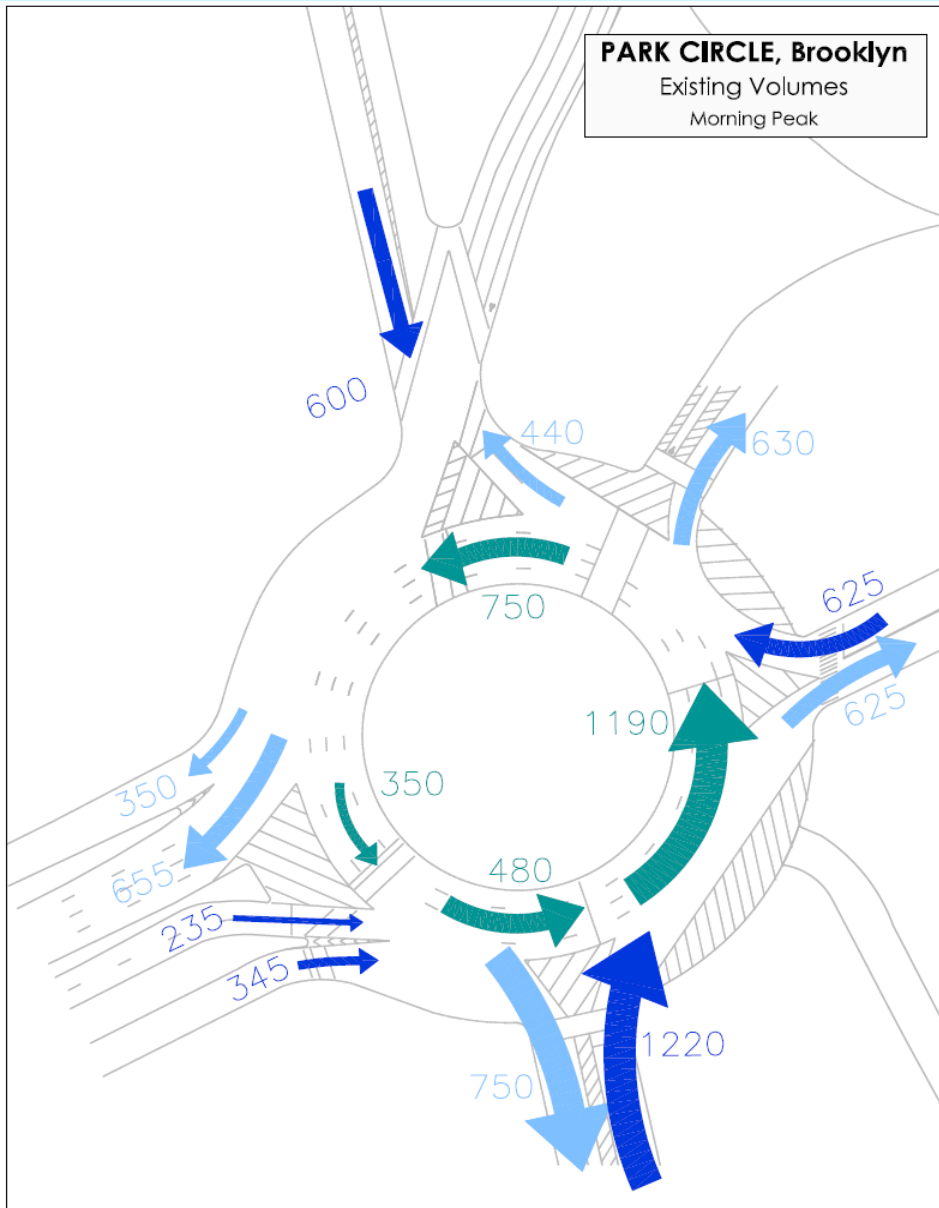
Traffic back-ups at Parkside Ave and Prospect Park SW

PARK CIRCLE, Brooklyn

Existing Conditions

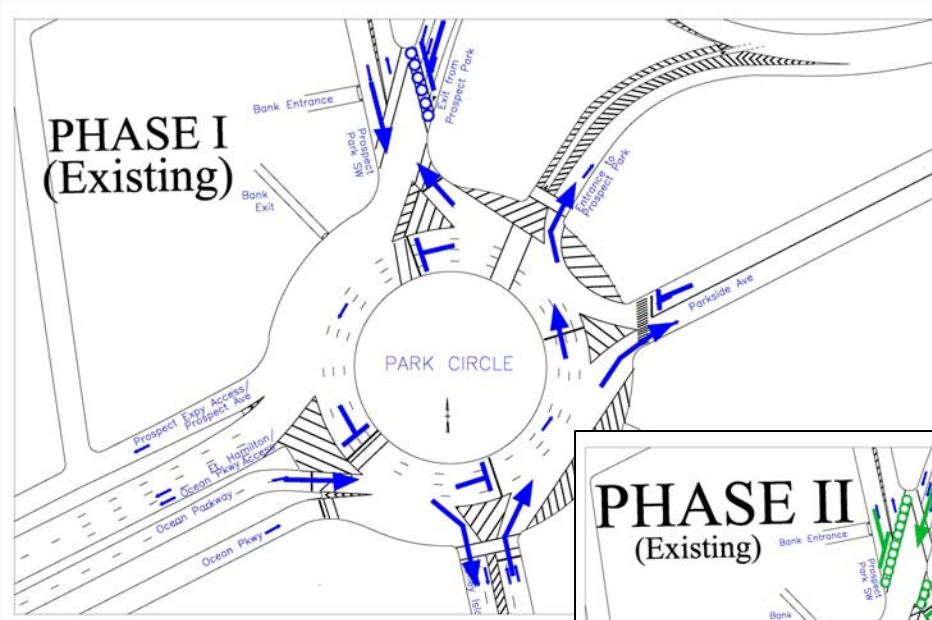


Traffic Volumes 2008

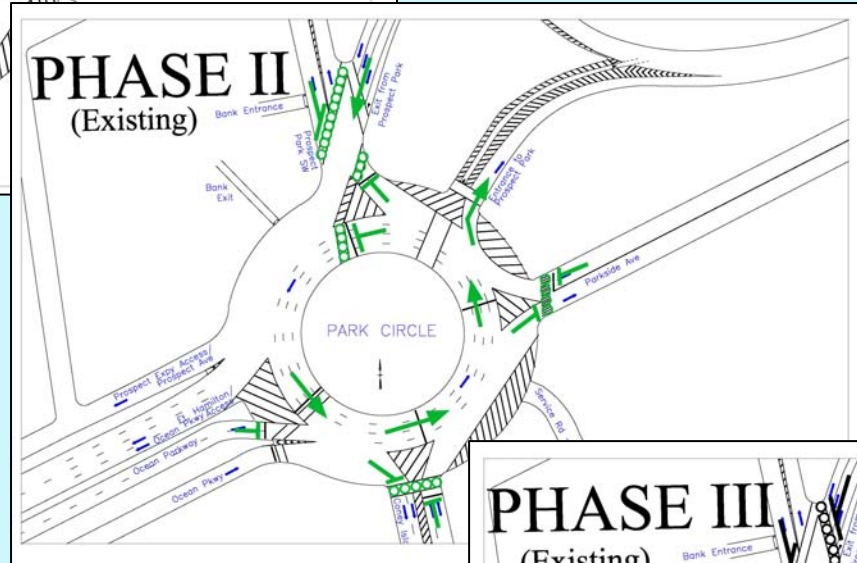


Existing Signal Phasing

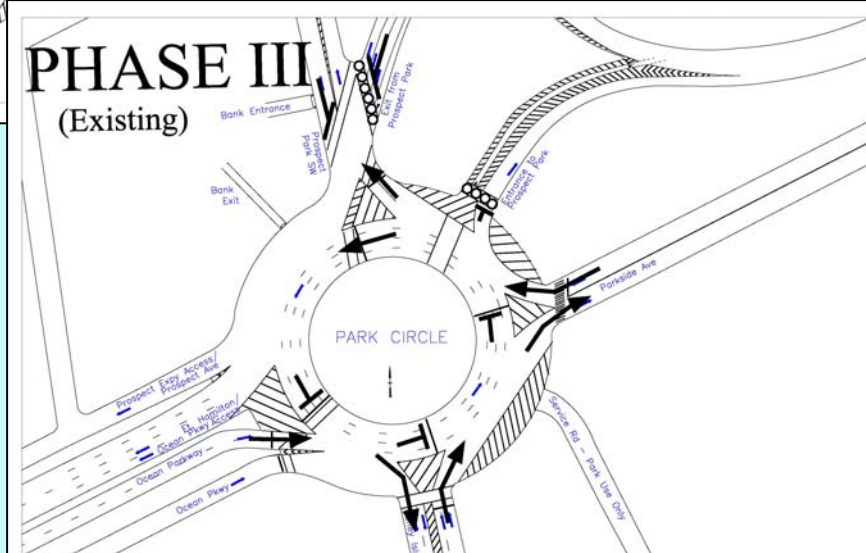
PHASE I (Existing)



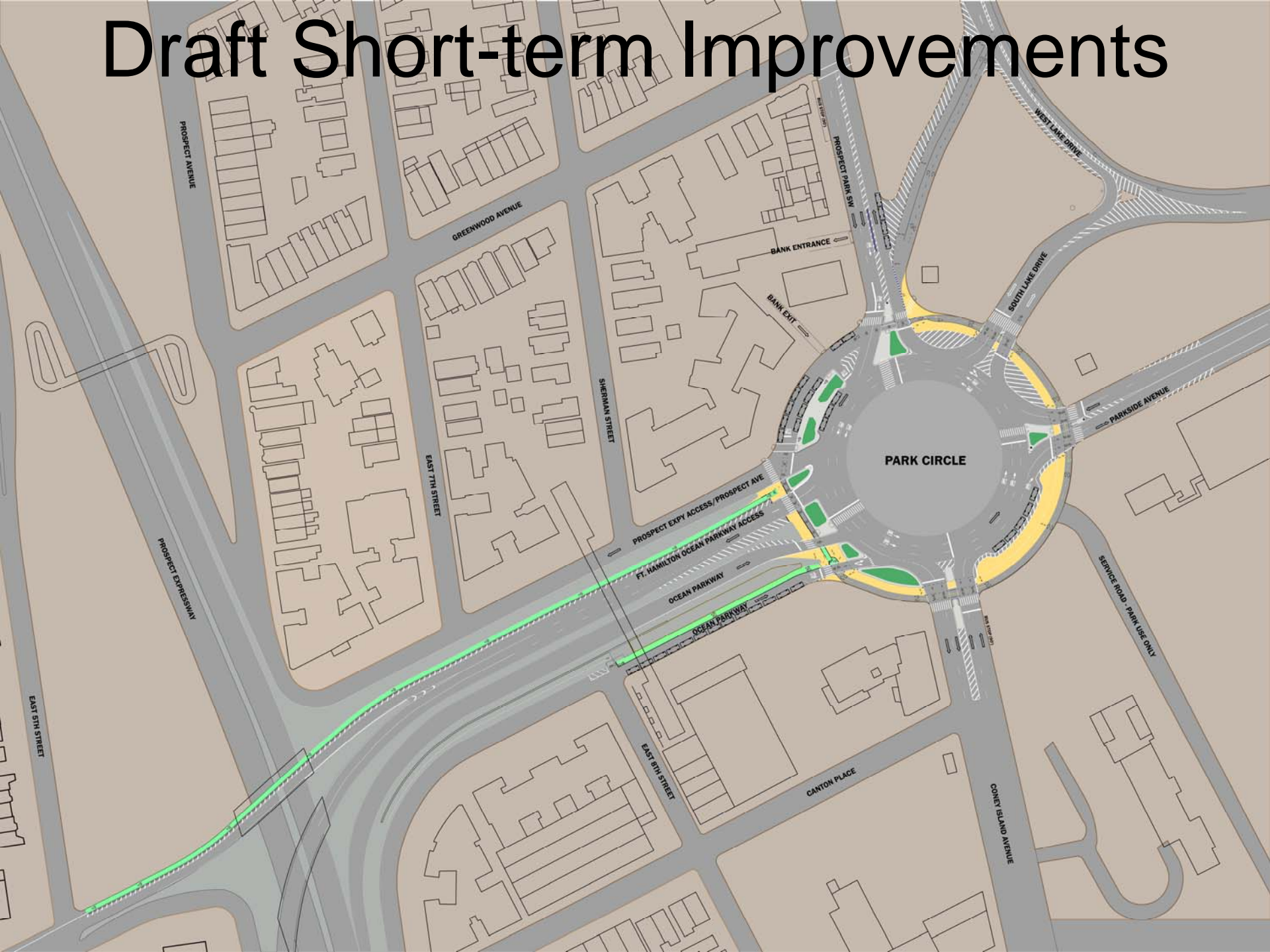
PHASE II (Existing)



PHASE III (Existing)



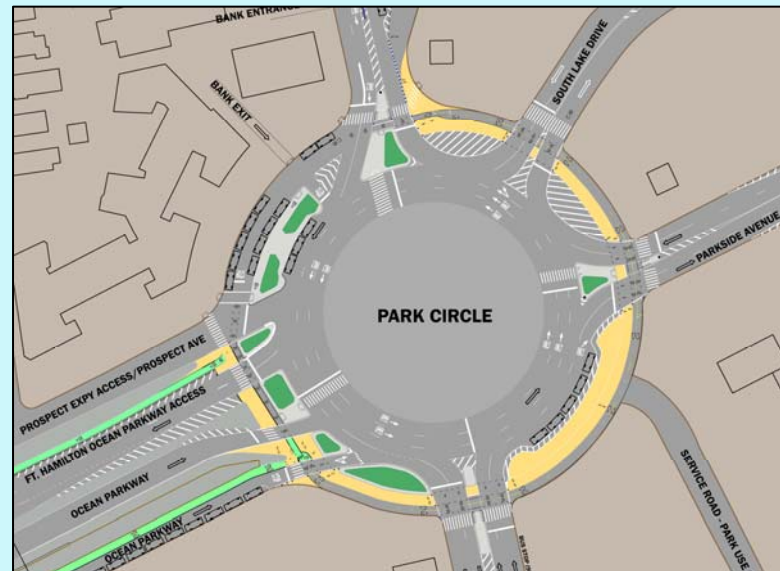
Draft Short-term Improvements



Improvements: Overall



- Ramp redesigned as a city street
- Unused roadbed transformed with landscaping and markings
- Circle made smaller

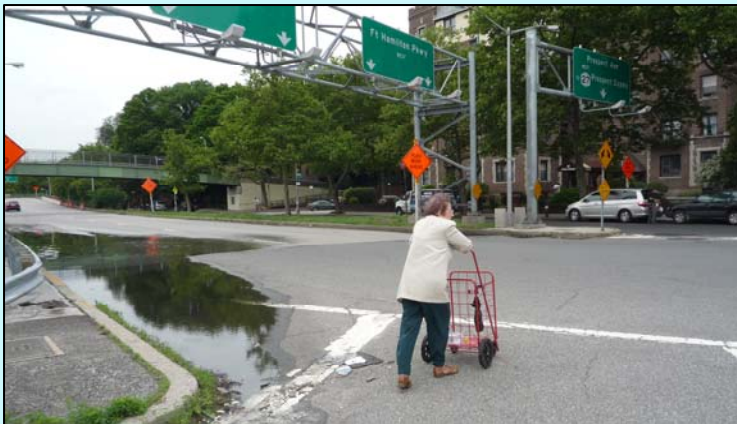


Improvements: Pedestrian

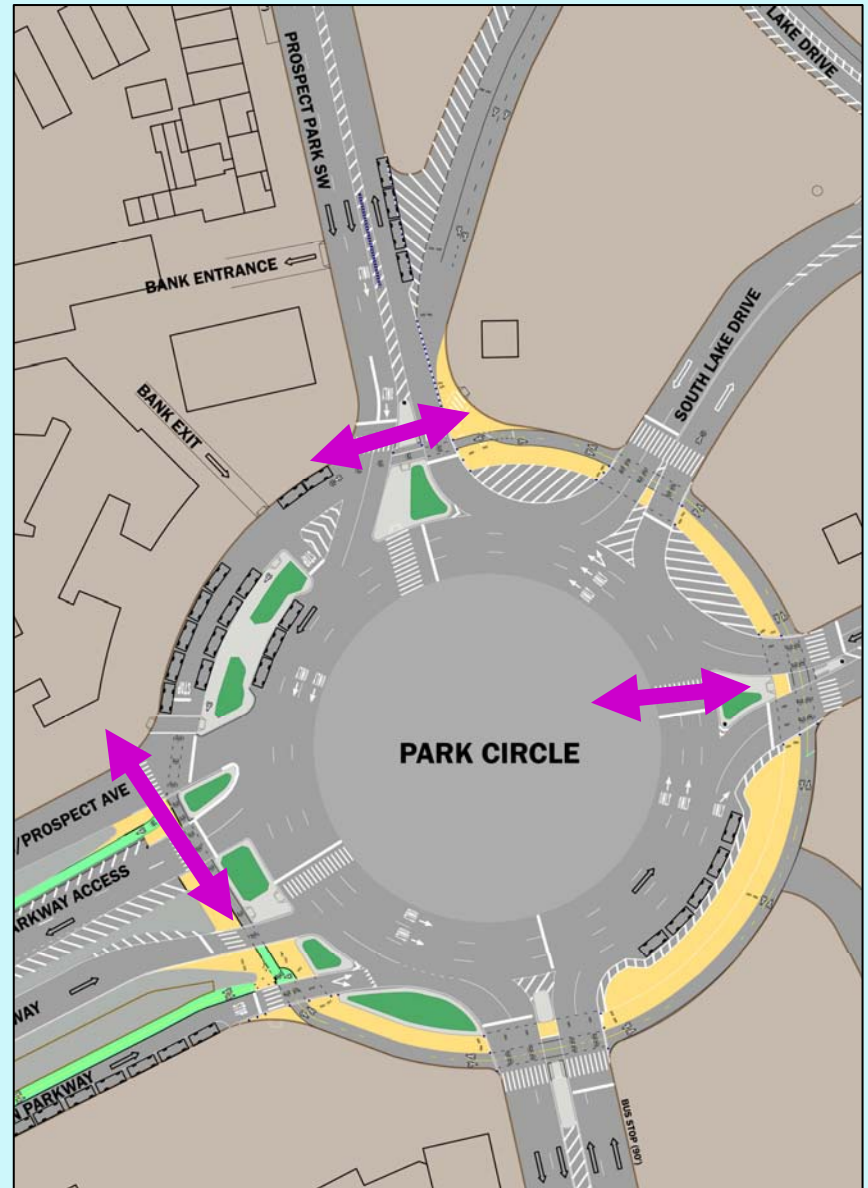
- New and direct crosswalks
- Shorter crossings



At Prospect Park Southwest



At the ramp



Park Entry: Today and Historic



2006

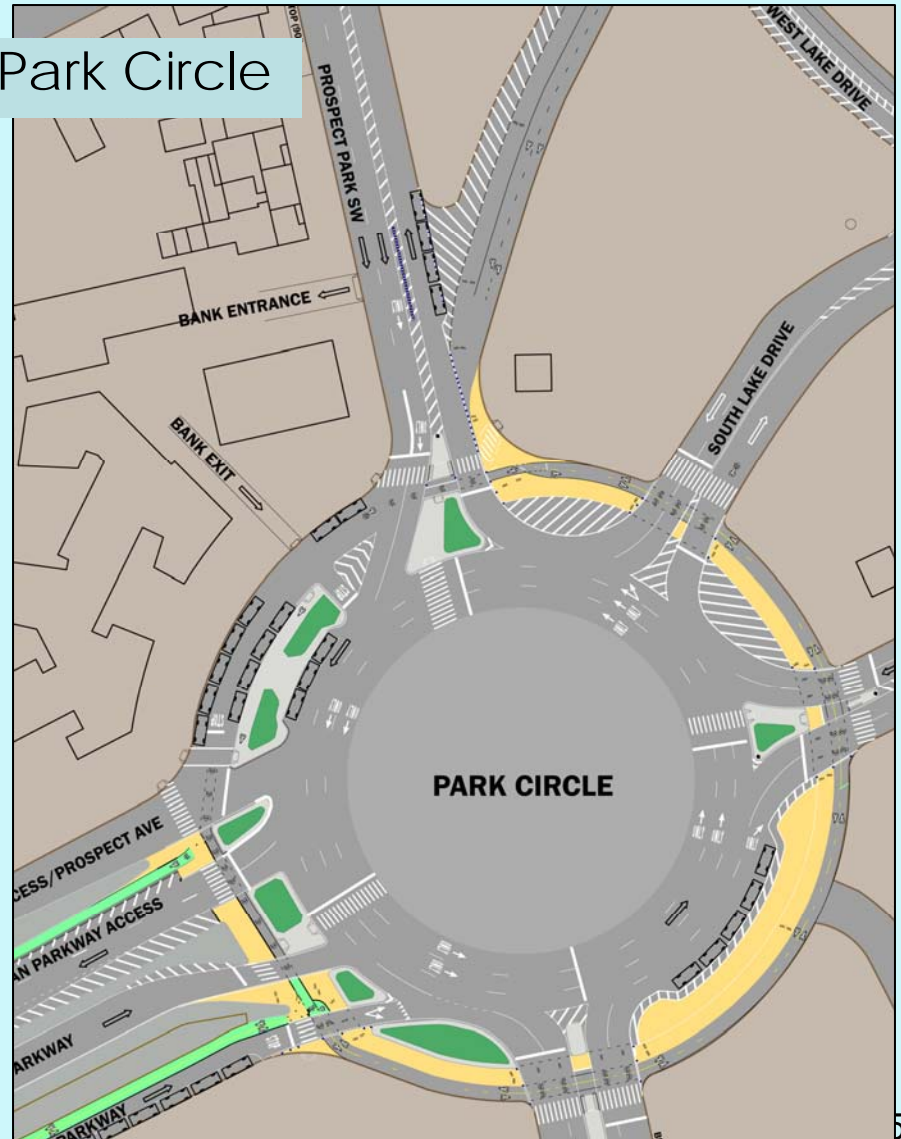


1890

■ ■ ■ ■ ■ Historic Alignment
& Proposed Restoration
■ ■ ■ ■ ■ 1950's Road

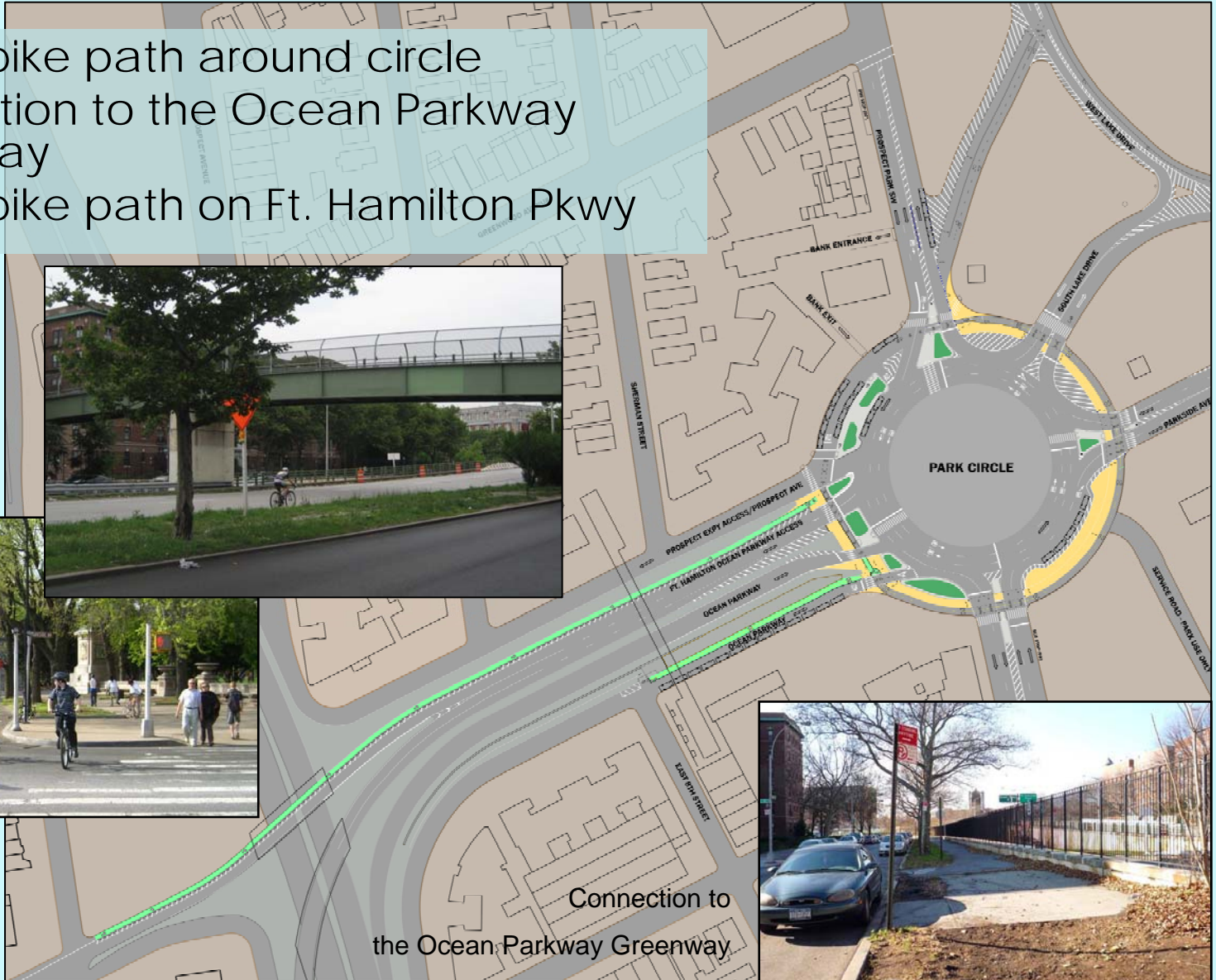
Improvements: Horses

Protected bridle path within Park Circle



Improvements: Bicycles

- Class 1 bike path around circle
- Connection to the Ocean Parkway Greenway
- Class 1 bike path on Ft. Hamilton Pkwy



Improvements: Vehicles

- Less speeding
- Less congestion at Prospect Park Southwest and Parkside Avenue
- Reduced confusion with new signage and road design

