



WESTCHESTER AVE AND ST. PETERS AVE BUS STOP IMPROVEMENTS

Bronx Community Board 10

July 22, 2020

BUS STOPS UNDER THE EL

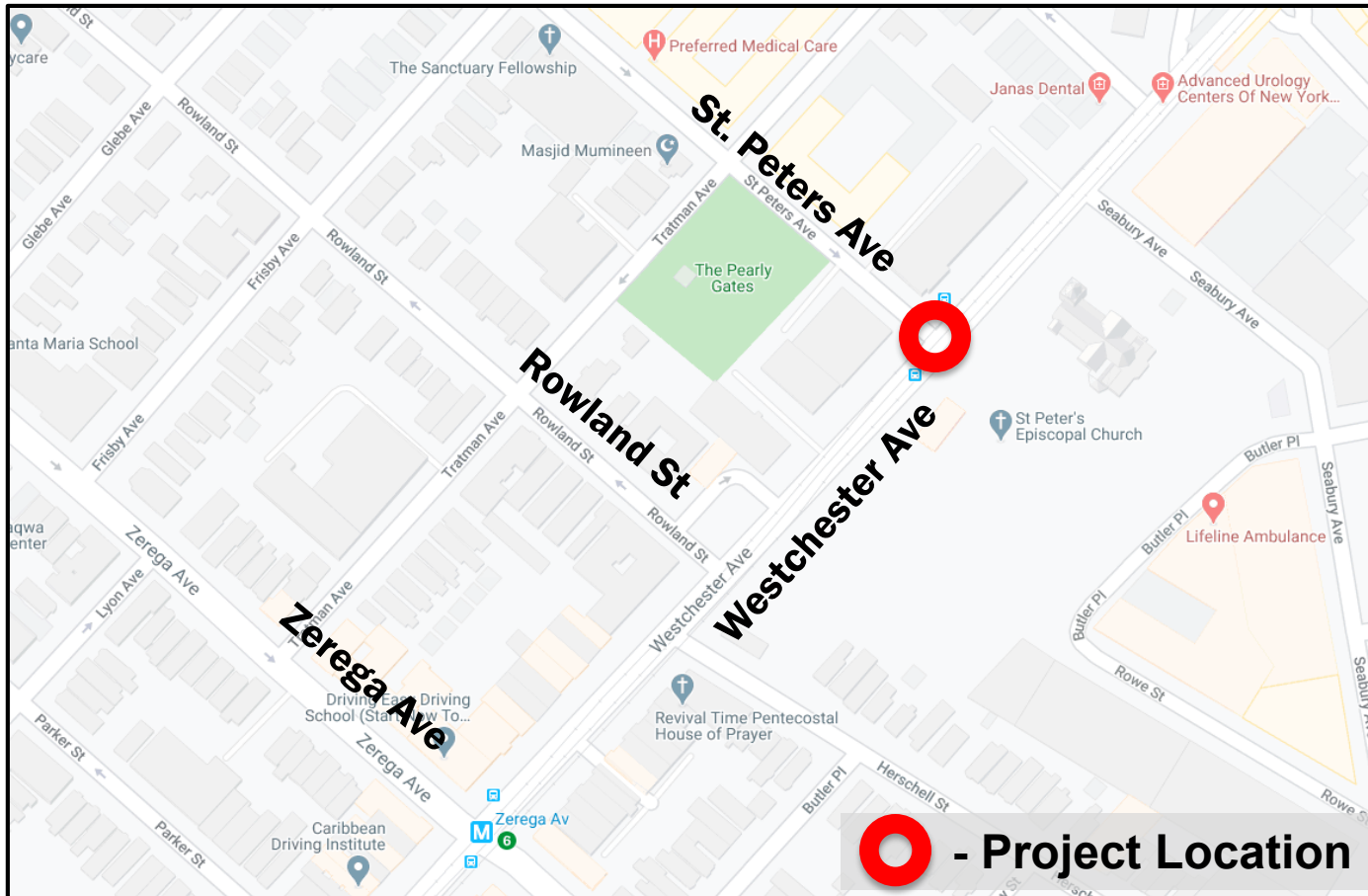
- Federally-funded program to improve safety at bus stops located under elevated subway lines
- Addresses unsafe waiting conditions, non-ADA compliant bus stops, and intersection safety
- Construction of bus boarding islands or curb extensions improves bus service and safety
- Improves bus operations and better organizes traffic and creates more predictability for vehicles, pedestrians and transit riders



Before: Bus riders wait for a bus at columns between moving lanes of traffic (above).
After: Bus riders wait on a newly constructed sidewalk (below) Broadway and W 228th St, BX

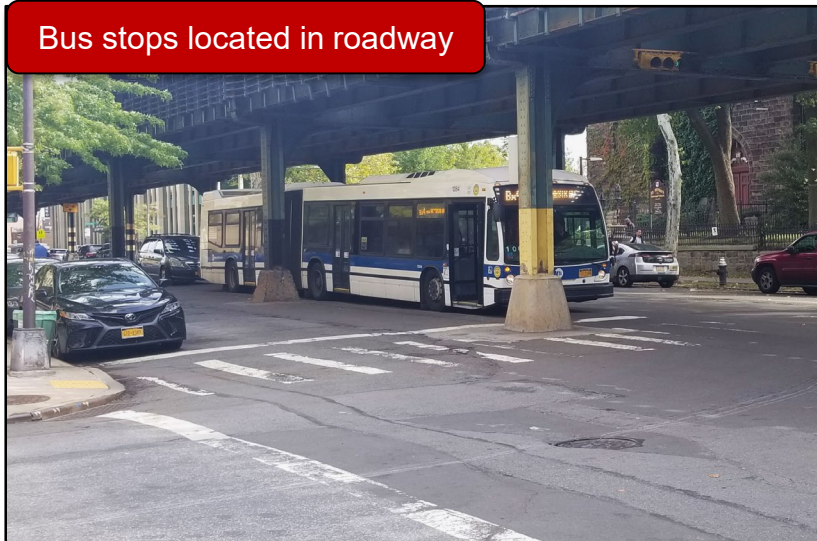
PROJECT LOCATION

- Mixture of commercial and residential corridor



BUS STOP UNDER THE EL - ISSUES

Bus stops located in roadway



Vehicle / bus rider conflicts



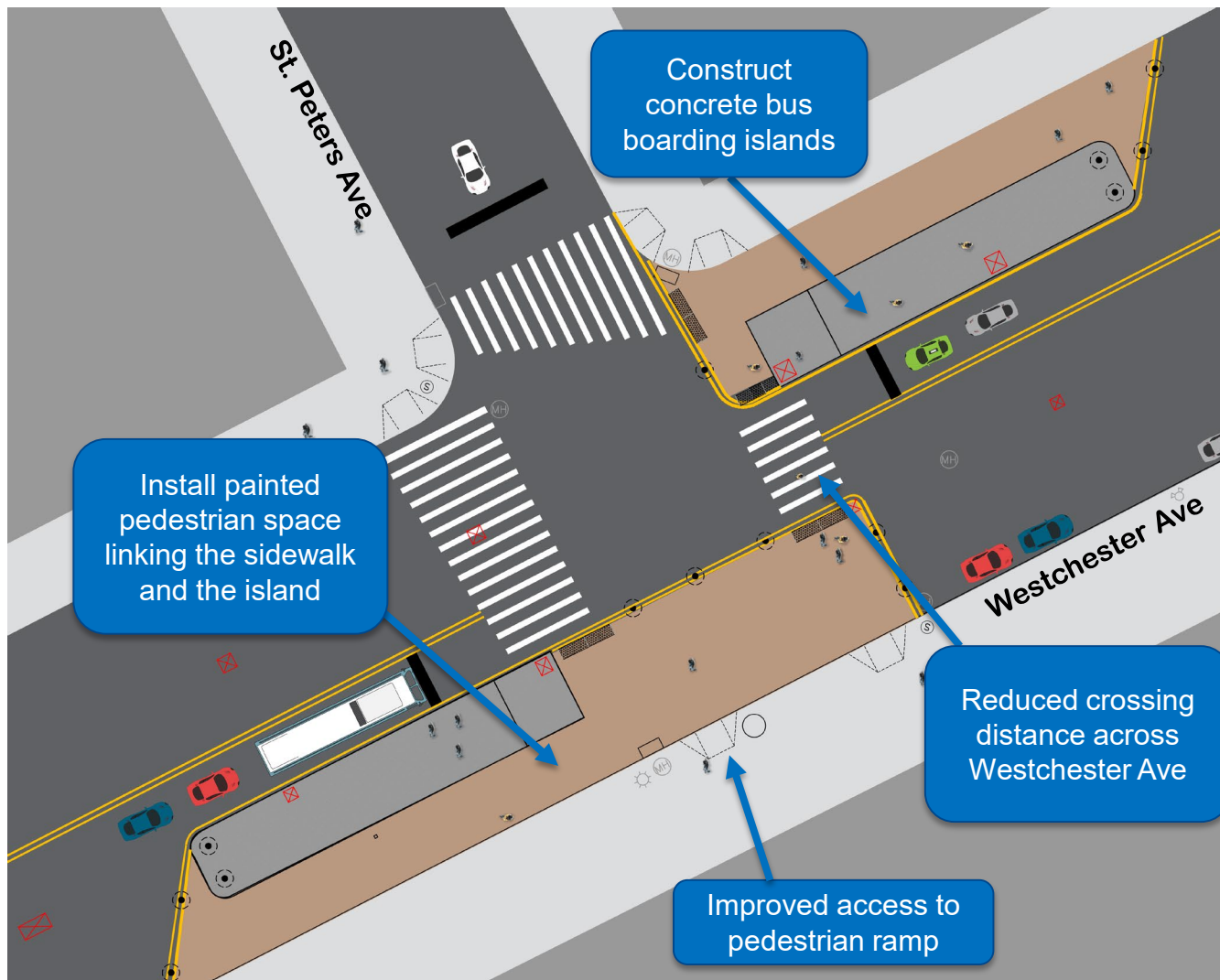
Accessibility issues for bus riders



Poor accessibility to sidewalk



PROPOSED CONDITIONS: WESTCHESTER AND ST PETERS AVE



PROPOSED CONDITIONS

- Construction of bus boarding islands at Westchester Ave and St. Peters Ave planned for summer 2020



BENEFITS OF PLAN

- Bus boarding islands improve ADA accessibility and safety for riders
- Better organizes traffic and creates more predictability for vehicles, pedestrians and transit riders
- Shorter, safer crossings for pedestrians and improved pedestrian refuge space
- Improves bus operations



Existing: Westchester Ave and St Peters



Proposed: A concrete bus boarding island at Westchester Ave and Manor Ave

THANK YOU!

Questions?



NYCDOT



nyc_dot



nyc_dot



NYCDOT